

FOR INDEX OF SHEETS, SEE SHEET NO. 381

PROJECT LOCATED IN VILLAGE OF GURNEE
 PROJECT LOCATED IN CITY OF WAUKEGAN
 PROJECT LOCATED IN VILLAGE OF LIBERTYVILLE
 PROJECT LOCATED IN LIBERTYVILLE TOWNSHIP

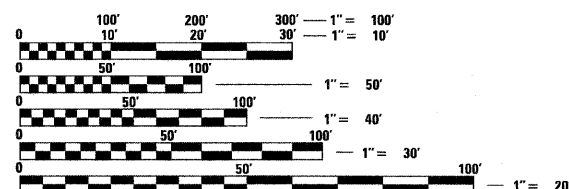
DESIGN DESIGNATION

MILWAUKEE AVENUE: (IL 21) ARTERIAL 6.03 (PCC-20)
 BUCKLEY ROAD: (IL 137) ARTERIAL ; CASEY ROAD - MINOR ARTERIAL

	ADT(2010)	DESIGN SPEED	POSTED SPEED
MILWAUKEE AVENUE	28,000	45 MPH	35-45MPH
BUCKLEY ROAD	32,000	45 MPH	35-45MPH
CASEY ROAD	2,950	45 MPH	35-45 MPH

PROPOSED IMPROVEMENT

RECONSTRUCTION OF ILLINOIS ROUTE 21 SOUTH OF ILLINOIS ROUTE 120 TO SOUTH OF ILLINOIS ROUTE 137 (BUCKLEY ROAD) INCLUDING STRUCTURE REPLACEMENT OF IL 21 OVER BULL CREEK, BOX CULVERTS REPLACED AT THE DESPLAINES RIVER TRIBUTARIES (NO.1 SOUTH OF CASEY ROAD, AND NO.2 NORTH OF EGIDI) , AND A MULTI-USE TRAIL UNDERPASS CROSSING SOUTH OF CASEY, 8 RETAINING WALLS, DRAINAGE IMPROVEMENTS, TRAFFIC SIGNALS AND OTHER RELATED WORK.



FULL SIZE PLANS HAVE BEEN PREPARED USING STANDARD ENGINEERING SCALES. REDUCED SIZED PLANS WILL NOT CONFORM TO STANDARD SCALES. IN MAKING MEASUREMENTS ON REDUCED PLANS, THE ABOVE SCALES MAY BE USED.

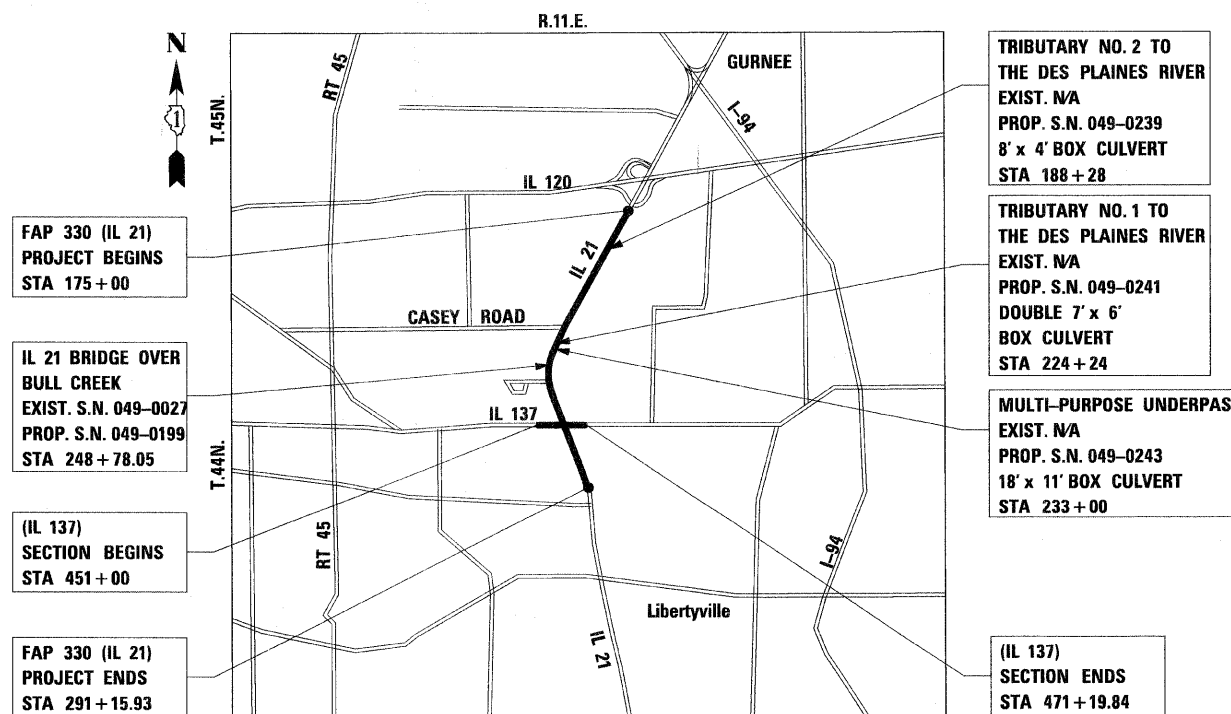
J.U.L.I.E.
 JOINT UTILITY LOCATING INFORMATION FOR EXCAVATORS
 1-800-892-0123
 OR 811

PROJECT ENGINEER TIM SCHMIDT (847) 705-4482
 PROJECT MANAGER SERIN KELLER (847) 705-4556
 CONTRACT NO. 60953

STATE OF ILLINOIS
 DEPARTMENT OF TRANSPORTATION
 DIVISION OF HIGHWAYS
**PROPOSED
 HIGHWAY PLANS**

F.A.P. 330 (ILLINOIS ROUTE 21 - MILWAUKEE AVENUE)
 SOUTH OF ILLINOIS ROUTE 120 TO SOUTH
 OF ILLINOIS ROUTE 137 (BUCKLEY ROAD)
 ROADWAY AND BRIDGE RECONSTRUCTION, ADD LANES AND
 TRAFFIC SIGNAL MODERNIZATION AND INSTALLATION
 SECTION 128R-3
 LAKE COUNTY
 C-91-199-00

VOLUME II OF II



MAP SCALE: NO SCALE

GROSS LENGTH OF PROJECT = 11,615.93 FEET = 2.200 MILES
 NET LENGTH OF PROJECT = 11,615.93 FEET = 2.200 MILES

F.A.P. RTE.	SECTION	COUNTY	TOTAL SHEETS	SHEET NO.
330	128R-3	LAKE	518	380
		ILLINOIS	CONTRACT NO. 60953	

D-91-199-00



LOCATION OF SECTION INDICATED THIS: →

STATE OF ILLINOIS
 DEPARTMENT OF TRANSPORTATION
 DIVISION OF HIGHWAYS

SUBMITTED _____ 20 _____

 DEPUTY DIRECTOR OF HIGHWAYS, REGION ENGINEER
 _____ 20 _____

 ENGINEER OF DESIGN AND ENVIRONMENT
 _____ 20 _____

 DIRECTOR OF HIGHWAYS, CHIEF ENGINEER

**PRINTED BY THE AUTHORITY
 OF THE STATE OF ILLINOIS**