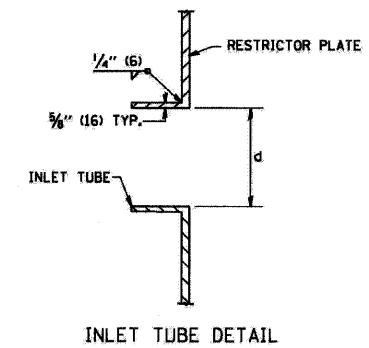
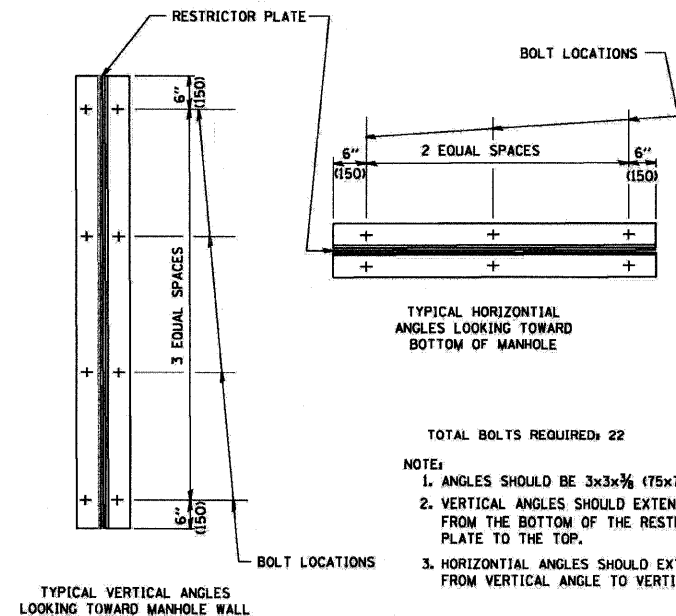


- NOTES:
1. ALL STEEL ANGLES AND PLATES TO BE GALVANIZED AFTER FABRICATION.
  2. ALL RESTRICTOR PLATES, ANGLES AND HARDWARE TO BE INCLUDED IN THE COST OF THE MANHOLE.
  3. BASIS OF PAYMENT: "MANHOLES, TYPE A, 6 FT. (1.8 M)-DIAMETER, TYPE I FRAME, CLOSED LID, RESTRICTOR PLATE" EACH



| STATION       | MANHOLE DIAMETER | FRAME AND GRATE | RESTRICTOR TYPE | INSIDE RESTRICTOR TYPE DIAMETER In. (mm) (d) | INVERT OF RESTRICTOR TYPE | ELEVATION OF TOP OF PLATE OVERFLOW |
|---------------|------------------|-----------------|-----------------|--|---------------------------|------------------------------------|
| ILL RTE 137   |                  |                 |                 |  |                           |                                    |
| 463+86.06 RT. | 6' DIA.          | T 1 CL          | 2               | 14.50  | 690.89                    | 695.00                             |
| 465+70.00 LT. | 6' DIA.          | T 1 CL          | 2               | 14.00  | 660.76                    | 664.00                             |
| ILL RTE 21    |                  |                 |                 |  |                           |                                    |
| 290+50.00     | 6' DIA.          | T 1 CL          | 2               | 12.50  | 694.60                    | 696.80                             |
|               |                  |                 |                 |  |                           |                                    |
|               |                  |                 |                 |  |                           |                                    |
|               |                  |                 |                 |  |                           |                                    |
|               |                  |                 |                 |  |                           |                                    |
|               |                  |                 |                 |  |                           |                                    |



- TOTAL BOLTS REQUIRED: 22
- NOTE:
1. ANGLES SHOULD BE 3x3x3/8 (75x75x75)
  2. VERTICAL ANGLES SHOULD EXTEND FROM THE BOTTOM OF THE RESTRICTOR PLATE TO THE TOP.
  3. HORIZONTAL ANGLES SHOULD EXTEND FROM VERTICAL ANGLE TO VERTICAL ANGLE.

| RESTRICTOR TYPE       |             |                     |                    |                    |         |
|-----------------------|-------------|---------------------|--------------------|--------------------|---------|
| 1                     | 2           | 3                   | 4                  | 5                  | 6       |
| RE-ENTRANT TUBE       | SHARP EDGED | SQUARE EDGED        | RE-ENTRANT TUBE    | SQUARE EDGED       | ROUNDED |
|                       |             |                     |                    |                    |         |
| LENGTH: 1/2 TO 1 DIA. |             | STREAM CLEARS SIDES | LENGTH: 2-1/2 DIA. | LENGTH: 2-1/2 DIA. |         |
| C=.52                 | C=.61       | C=.61               | C=.73              | C=.82              | C=.98   |

VALUES OF "C" FOR CIRCULAR AND SQUARE ORIFICES

ALL DIMENSIONS ARE IN INCHES (MILLIMETERS) UNLESS OTHERWISE SHOWN.