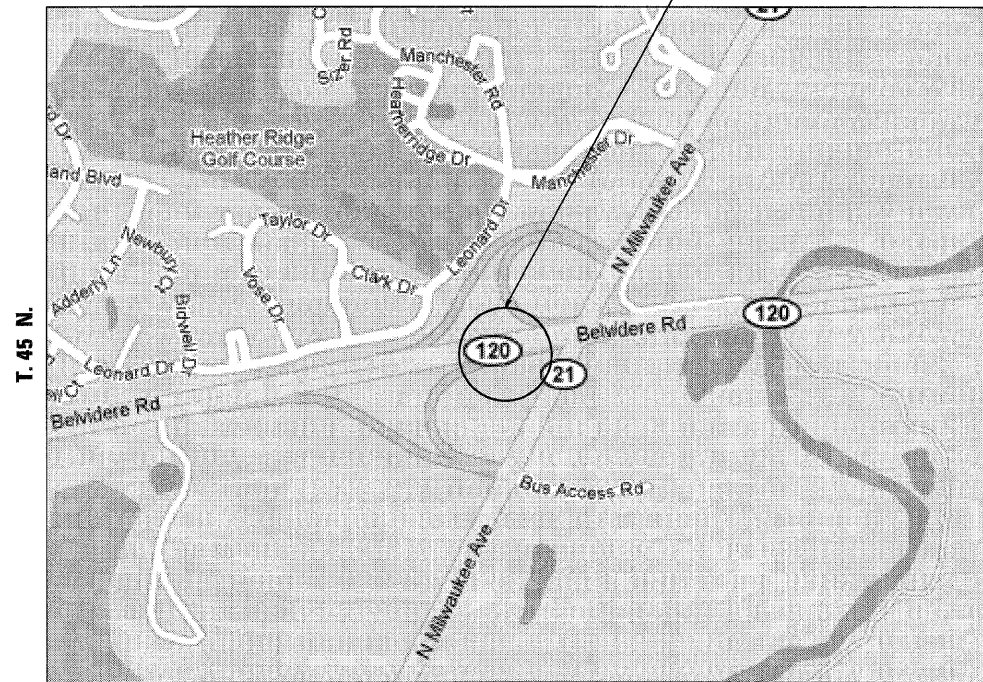


TRAFFIC DATA  
 SPEED LIMIT = 55 MPH  
 2009 ADT = 37,900

LOCATION 1 - LAKE COUNTY  
 STRUCTURE NUMBER: 049-0044 (WB) & 049-0045 (EB)  
 ILLINOIS ROUTE 120 OVER A STREAM  
 LOCATED IN WARREN TOWNSHIP  
 VILLAGE OF GURNEE

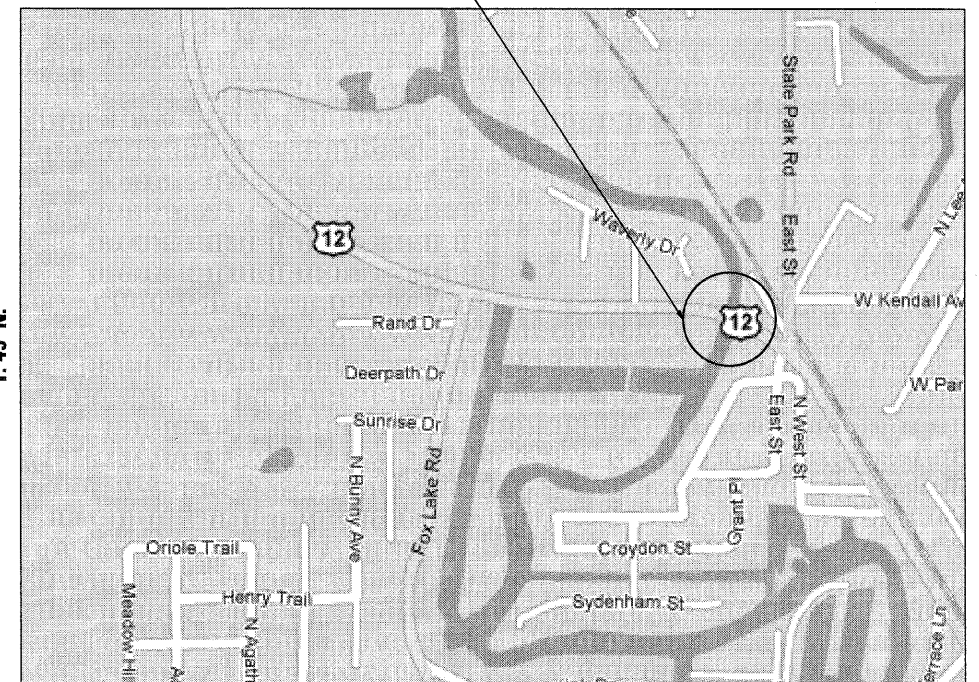


R. 11 E.

T. 45 N.

TRAFFIC DATA  
 SPEED LIMIT = 45 MPH  
 2009 ADT = 13,200

LOCATION 2 - MCHENRY COUNTY  
 STRUCTURE NUMBER: 056-0057  
 U.S. ROUTE 12 OVER NIPPERSINK CREEK  
 LOCATED IN MCHENRY TOWNSHIP  
 VILLAGE OF SPRING GROVE

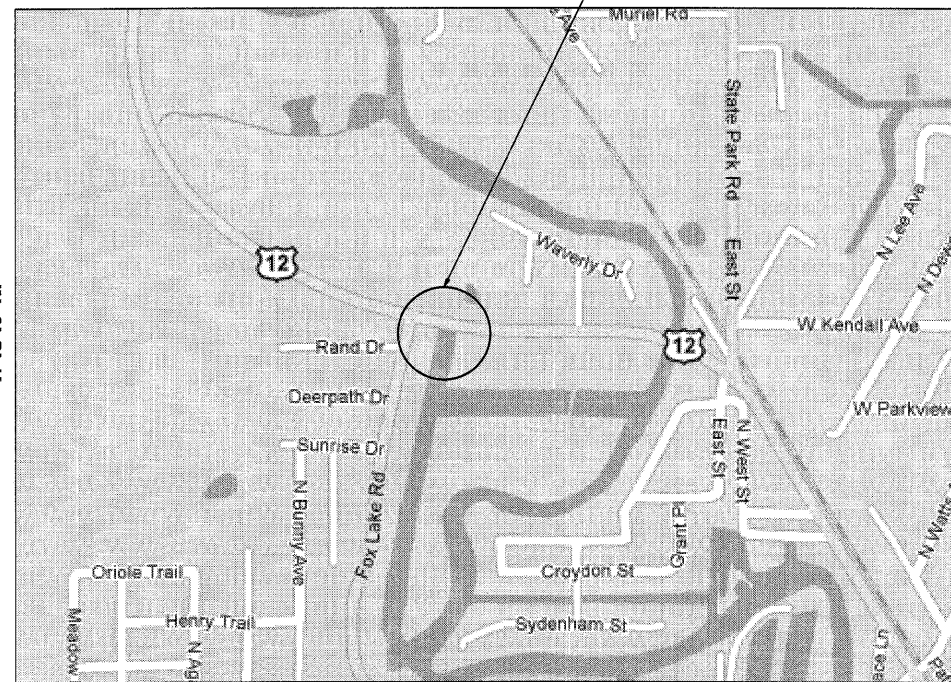


R. 9 E.

T. 45 N.

TRAFFIC DATA  
 SPEED LIMIT = 45 MPH  
 2009 ADT = 13,200

LOCATION 3 - MCHENRY COUNTY  
 STRUCTURE NUMBER: 056-0020  
 U.S. ROUTE 12 OVER NIPPERSINK CREEK OVERFLOW  
 LOCATED IN BURTON AND MCHENRY TOWNSHIPS  
 VILLAGE OF SPRING GROVE

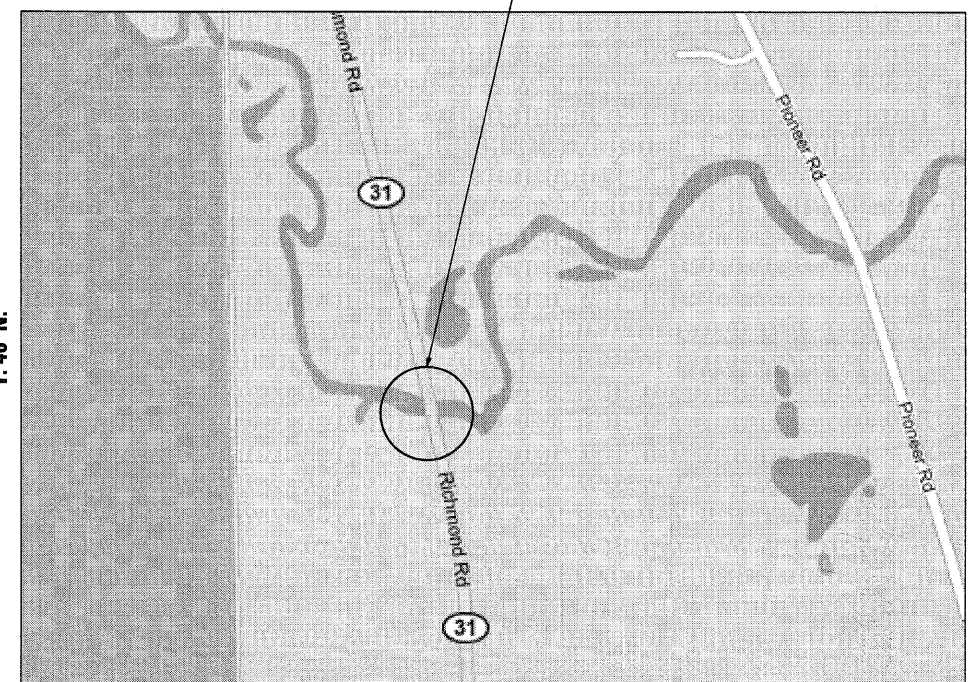


R. 9 E.

T. 45/46 N.

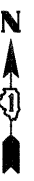
TRAFFIC DATA  
 SPEED LIMIT = 55 MPH  
 2009 ADT = 5,600

LOCATION 4 - MCHENRY COUNTY  
 STRUCTURE NUMBER: 056-0037  
 ILLINOIS ROUTE 31 OVER NIPPERSINK CREEK  
 LOCATED IN RICHMOND TOWNSHIP  
 VILLAGE OF RICHMOND



R. 8 E.

T. 46 N.



COMPANY NAME: HRGreen.com  
 PROJECT CONTACT: S. PERNAL  
 CLIENT: OTTEB  
 FILE NAME: 0610196.05-6086-location.dgn  
 PLOT DRIVER: pdf.plt  
 STANDARD: TRANS.TBL



USER NAME = S. PERNAL	DESIGNED - C. HARTKE	REVISED -
PLOT SCALE = N/A	DRAWN - S. PERNAL	REVISED -
PLOT DATE = 7/28/2011	CHECKED - T. HAMILTON	REVISED -
	DATE - 7/20/11	REVISED -

STATE OF ILLINOIS  
 DEPARTMENT OF TRANSPORTATION

LOCATION MAPS SCOUR COUNTERMEASURES	
SCALE: N/A	SHEET NO. 1 OF 1 SHEETS STA. TO STA.

F.A. RTE.	SECTION	COUNTY	TOTAL SHEETS	SHEET NO.
VAR.	2010-124-1	VAR.	21	4
CONTRACT NO. 60M86				
FED. ROAD DIST. NO. ILLINOIS FED. AID PROJECT				