

F.A. RTE.	SECTION	COUNTY	TOTAL SHEETS	SHEET NO.
VAR	2011-044-DM	VARIOUS	22	1
		ILLINOIS	CONTRACT NO. 60P53	

STATE OF ILLINOIS  
DEPARTMENT OF TRANSPORTATION  
DIVISION OF HIGHWAYS

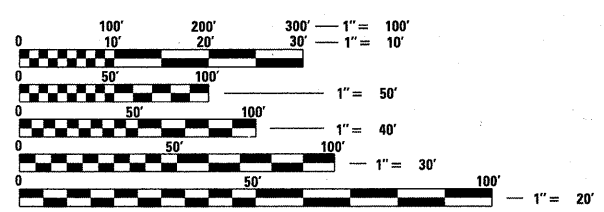
**PROPOSED  
HIGHWAY PLANS**

ROUTE: VARIOUS LOCATIONS  
SECTION 2011-044-DM  
BUILDING DEMOLITION  
VARIOUS COUNTIES

C-91-570-11

FOR INDEX OF SHEETS, SEE SHEET NO. 3

THE IMPROVEMENTS ARE LOCATED IN THE VILLAGES OF GLEN ELLYN, HAWTHORN WOODS AND IN THE CITY OF ELGIN.



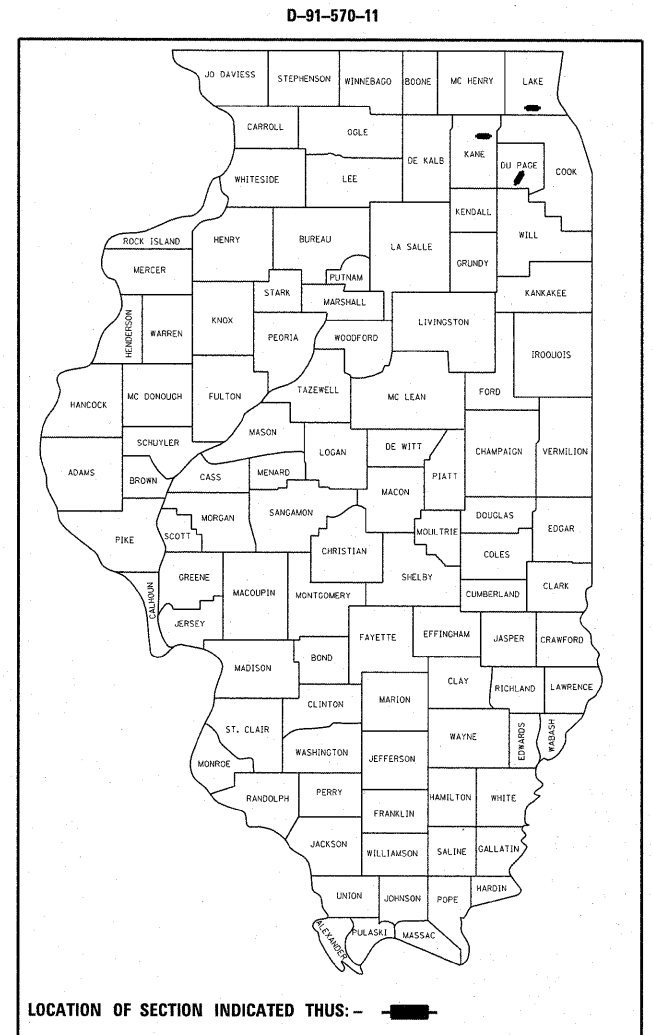
FULL SIZE PLANS HAVE BEEN PREPARED USING STANDARD ENGINEERING SCALES. REDUCED SIZED PLANS WILL NOT CONFORM TO STANDARD SCALES. IN MAKING MEASUREMENTS ON REDUCED PLANS, THE ABOVE SCALES MAY BE USED.

J.U.L.I.E.  
JOINT UTILITY LOCATION INFORMATION FOR EXCAVATION  
1-800-892-0123  
OR 811

PROJECT ENGINEER: KARI SMITH (847) 705-4437  
PROJECT MANAGER: KEN ENG (847) 705-4247

CONTRACT NO. 60P53

FOR LOCATION MAPS, SEE SHEET NO. 2



STATE OF ILLINOIS  
DEPARTMENT OF TRANSPORTATION  
DIVISION OF HIGHWAYS

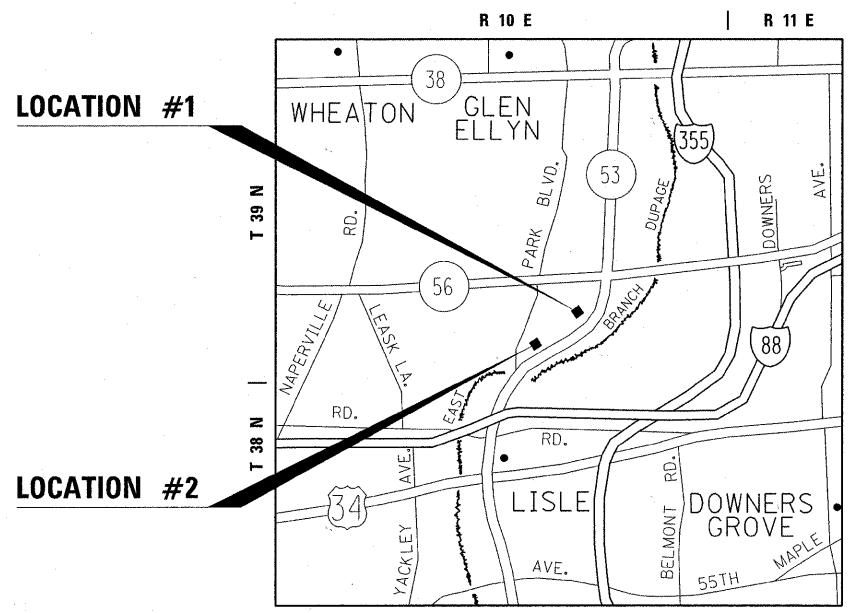
SUBMITTED MAY 31, 20 11

Diane M. O'Keefe *gc*  
DEPUTY DIRECTOR OF HIGHWAYS, REGION ENGINEER

August 19 20 11  
Scott E. Stettin *P.E. for*  
acting ENGINEER OF DESIGN AND ENVIRONMENT

August 19 20 11  
Christine M. Reed  
DIRECTOR OF HIGHWAYS, CHIEF ENGINEER

PRINTED BY THE AUTHORITY  
OF THE STATE OF ILLINOIS



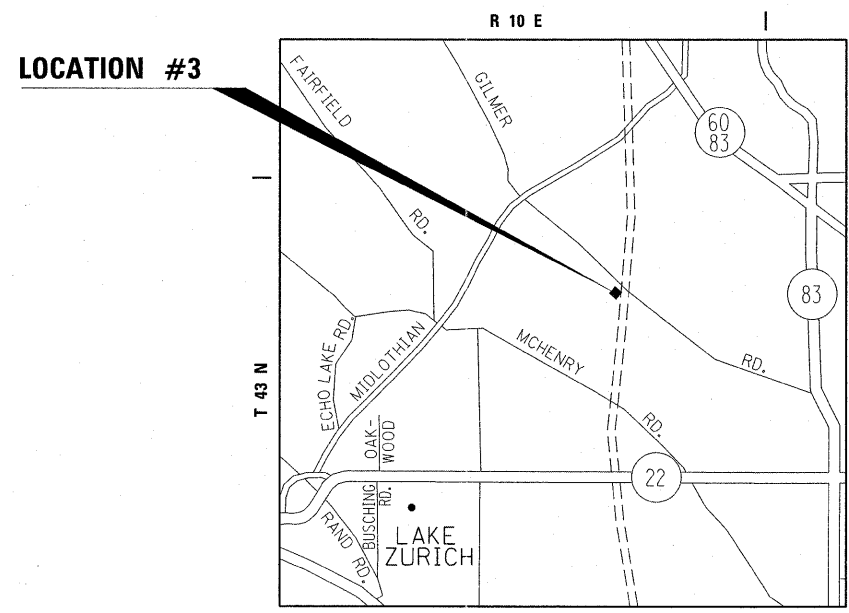
**VILLAGE OF GLEN ELLYN  
DUPAGE COUNTY  
MILTON TOWNSHIP**

**LOCATION #1**

ADDRESS: 22W312 IL ROUTE 53, GLEN ELLYN, IL, 60137  
TRAFFIC DATA: 2009 ADT = 16,500

**LOCATION #2**

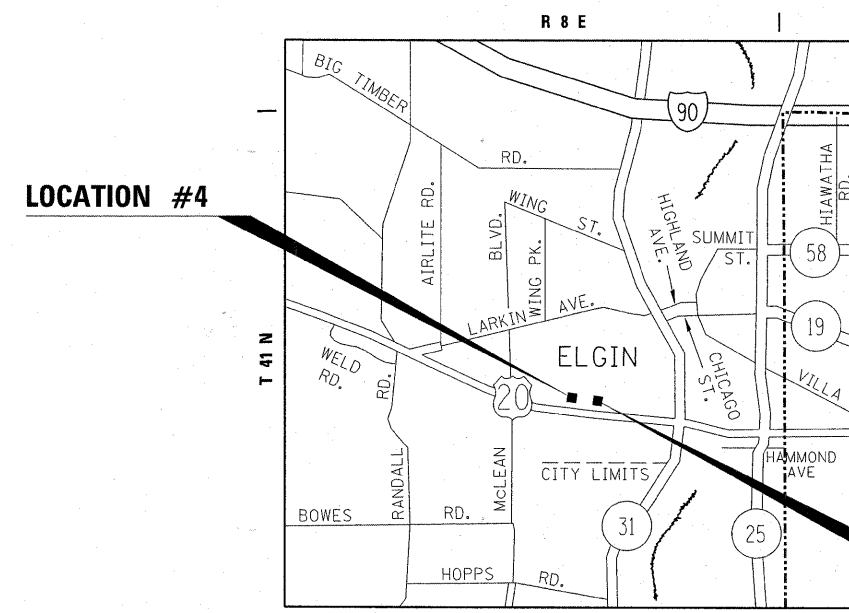
ADDRESS: 35540 OSAGE DRIVE, GLEN ELLYN, IL, 60137  
TRAFFIC DATA: ADT NOT AVAILABLE



**VILLAGE OF HAWTHORN WOODS  
LAKE COUNTY  
ELA TOWNSHIP**

**LOCATION #3**

ADDRESS: 7 LISA LANE, HAWTHORN WOODS, IL, 62234  
TRAFFIC DATA: ADT NOT AVAILABLE



**CITY OF ELGIN  
KANE COUNTY  
ELGIN TOWNSHIP**

**LOCATION #4**

ADDRESS: 568 ELM GROVE DRIVE, ELGIN, IL, 60123  
TRAFFIC DATA: ADT NOT AVAILABLE

**LOCATION #5**

ADDRESS: 1113 BIRCHDALE DRIVE, ELGIN, IL, 60123  
TRAFFIC DATA: ADT NOT AVAILABLE

FILE NAME =	USER NAME = pociachal	DESIGNED -	REVISED -	<b>STATE OF ILLINOIS DEPARTMENT OF TRANSPORTATION</b>	<b>BUILDING DEMOLITION (VARIOUS LOCATIONS) LOCATION MAPS</b>			F.A. RTE.	SECTION	COUNTY	TOTAL SHEETS	SHEET NO.
c:\pw\work\pwidot\pociachal\0270297\sh	p1en.dgn	DRAWN -	REVISED -		SCALE: NONE	SHEET NO. 1 OF 1 SHEETS	STA.	TO STA.	2011-044-DM	VARIOUS	22	2
	PLOT SCALE = 50.0000' / in.	CHECKED -	REVISED -		CONTRACT NO. 60P53							
	PLOT DATE = 6/29/2011	DATE -	REVISED -		ILLINOIS FED. AID PROJECT							

**INDEX OF SHEETS**

SHEET NO.	DESCRIPTION
1	TITLE SHEET
2	LOCATION MAPS
3	INDEX OF SHEETS, STATE STANDARDS, AND GENERAL NOTES
4	SUMMARY OF QUANTITIES
5 - 9	BUILDING DEMOLITION PLAN
10	LANDSCAPING AND EROSION CONTROL GENERAL NOTES AND SCHEDULES OF QUANTITIES
11 - 15	LANDSCAPING AND EROSION CONTROL PLAN
16 - 20	PLAT OF HIGHWAYS (FOR INFORMATION ONLY)
21	TRAFFIC CONTROL AND PROTECTION FOR SIDE ROADS, INTERSECTIONS, AND DRIVEWAYS (TC-10)
22	DELETED FROM THE PLAN SET

**HIGHWAY STANDARDS**

STANDARD NO.	DESCRIPTION
000001-06	STANDARD SYMBOLS, ABBREVIATIONS AND PATTERNS
280001-05	TEMPORARY EROSION CONTROL SYSTEMS
701001-02	OFF-ROAD OPERATIONS, 2L, 2W, MORE THAN 15' (4.5 M) AWAY
701006-03	OFF-ROAD OPERATIONS, 2L, 2W, 15' (4.5 M) TO 24" (600 MM) FROM PAVEMENT EDGE
701101-02	OFF-ROAD OPERATIONS, MULTILANE, 15' (4.5 M) TO 24" (600 MM) FROM PAVEMENT EDGE
701106-02	OFF-ROAD OPERATIONS, MULTILANE, MORE THAN 15' (4.5 M) AWAY
701901-01	TRAFFIC CONTROL DEVICES

**GENERAL NOTES**

BEFORE STARTING ANY EXCAVATION, THE CONTRACTOR SHALL CALL "J.U.L.I.E." AT (800) 892-0123 OR 811 FOR FIELD LOCATIONS OF BURIED ELECTRIC, TELEPHONE AND GAS UTILITIES. 48 HOUR NOTIFICATION IS REQUIRED.

THE CONTRACTOR SHALL COORDINATE CONSTRUCTION ACTIVITIES WITH UTILITY COMPANIES, VILLAGES OF GLEN ELLYN, HAWTHORN WOODS AND THE CITY OF ELGIN.

THE CONTRACTOR WILL NOT BE ALLOWED TO SET UP A YARD OR FIELD OFFICE ON STATE PROPERTY WITHOUT WRITTEN PERMISSION FROM THE DEPARTMENT.

IT SHALL BE THE CONTRACTOR'S RESPONSIBILITY TO VERIFY ALL DIMENSIONS AND CONDITIONS EXISTING IN THE FIELD PRIOR TO CONSTRUCTION AND ORDERING OF MATERIALS.

THE CONTRACTOR IS RESPONSIBLE FOR OBTAINING A DEMOLITION PERMIT FROM THE VILLAGE OR CITY WHERE THE DEMOLITION WILL TAKE PLACE.

THE CONTRACTOR MUST CONTACT THE APPROPRIATE VILLAGE OR CITY FOR CORRESPONDING UTILITY DISCONNECTION REQUIREMENTS.

BACKFILL USED FOR ANY HOLES, SUCH AS BASEMENTS, SHALL BE FILLED WITH POROUS GRANULAR EMBANKMENT AND SHALL BE INCLUDED IN THE UNIT PRICE FOR BUILDING REMOVAL.

ALL TRAFFIC CONTROL SHALL BE INCLUDED IN THE UNIT PRICE FOR BUILDING REMOVAL AND DEBRIS REMOVAL, EXCEPT FOR TEMPORARY INFORMATION SIGNING.

CONTRACTOR SHALL INSTALL "TRUCKS ENTERING AND LEAVING HIGHWAY" SIGNS, W21-1105 (MODIFIED) IN EACH DIRECTION ON ILLINOIS ROUTE 53 APPROACHING LOCATION NO. 1 AS SHOWN ON SHEET 5 PRIOR TO ACCESSING SITE NO. 1. THESE SIGNS SHALL BE PAID AS TEMPORARY INFORMATION SIGNING. NO DIRECT ACCESS TO A STATE HIGHWAY SHALL BE ALLOWED FROM ANY OTHER SITE.

DUST CONTROL FOR EACH SITE SHALL BE IN ACCORDANCE TO ARTICLE 107.36 OF THE STANDARD SPECIFICATIONS FOR ROAD AND BRIDGE CONSTRUCTION, AND SHALL BE INCLUDED IN THE UNIT PRICE FOR BUILDING REMOVAL.

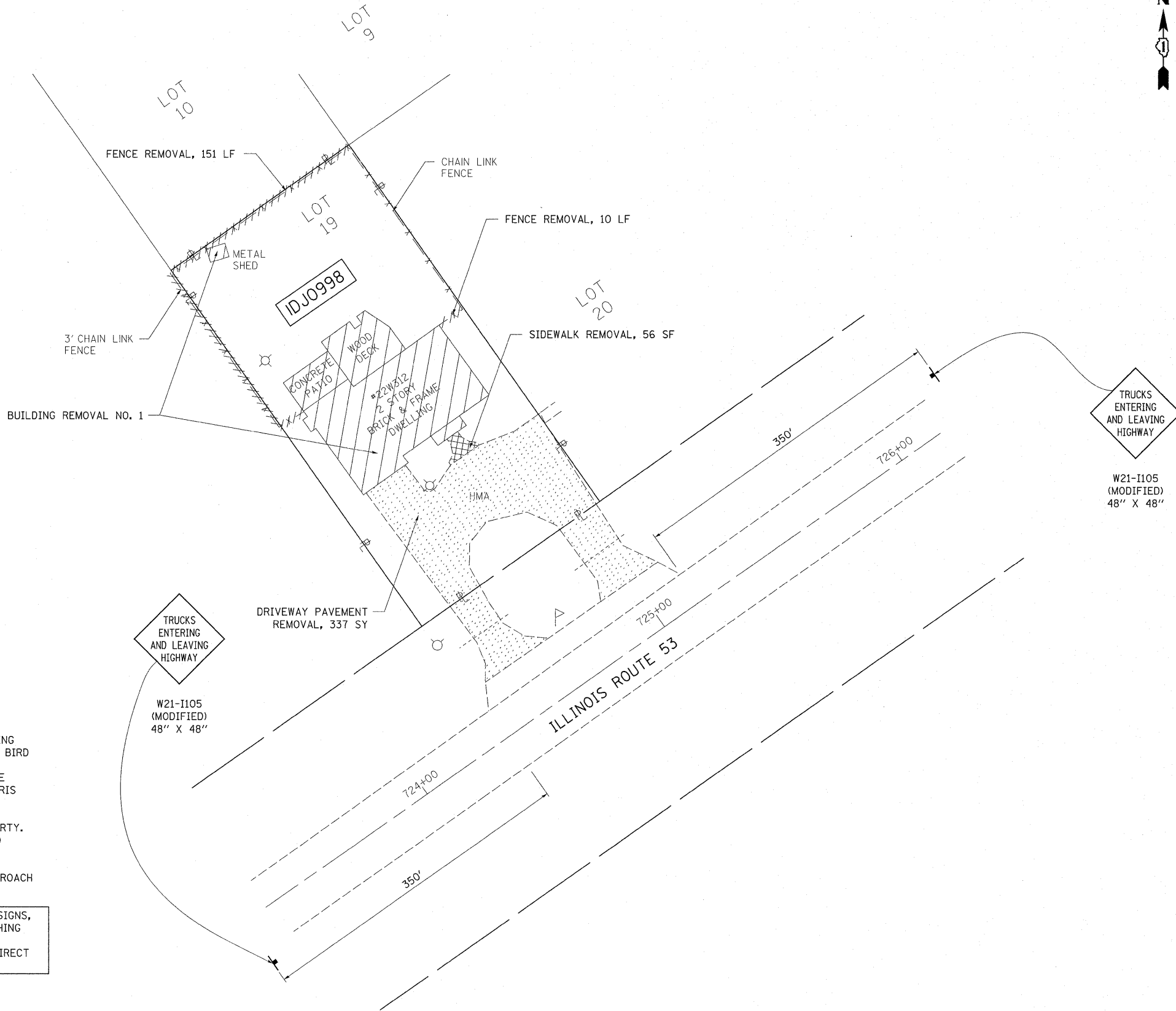
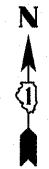
ALL PERMIT FEES FOR THE DISCONNECTION OF UTILITIES SHALL BE INCLUDED IN THE UNIT PRICE FOR BUILDING REMOVAL.

FILE NAME =	USER NAME = pociechal	DESIGNED -	REVISED - LP 08/10/2011	<b>STATE OF ILLINOIS DEPARTMENT OF TRANSPORTATION</b>	<b>BUILDING DEMOLITION (VARIOUS LOCATIONS) INDEX OF SHEETS, STATE STANDARDS, AND GENERAL NOTES</b>			F.A. RTE.	SECTION	COUNTY	TOTAL SHEETS	SHEET NO.
c:\pwork\pwork\pociechal\00270297\sh	plan.dgn	DRAWN -	REVISED -		VAR	2011-044-DM	VARIOUS	22	3			
PLOT SCALE = 50.0000' / 1"	CHECKED -	REVISED -			CONTRACT NO. 60P53							
PLOT DATE = 8/10/2011	DATE -	REVISED -			SCALE: NONE	SHEET NO. 1 OF 1 SHEETS	STA.	TO STA.	ILLINOIS FED. AID PROJECT			

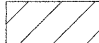

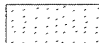
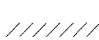
URBAN

SUMMARY OF QUANTITIES			TOTAL QUANTITIES	CONSTRUCTION TYPE CODE			SUMMARY OF QUANTITIES			TOTAL QUANTITIES	CONSTRUCTION TYPE CODE		
CODE NO	ITEM	UNIT		100% STATE 0044 LOC 1,2 DUPAGE CO.	100% STATE 0044 LOC 3 LAKE CO.	100% STATE 0044 LOC 4,5 KANE CO.	CODE NO	ITEM	UNIT				
21101615	TOPSOIL FURNISH AND PLACE, 4"	SO YD	2273	1073	659	541							
25000200	SEEDING, CLASS 2	ACRE	0.47	0.22	0.14	0.11							
25100105	MULCH, METHOD 1	ACRE	0.47	0.22	0.14	0.11							
28000400	PERIMETER EROSION BARRIER	FOOT	1033	621	205	207							
44000200	DRIVEWAY PAVEMENT REMOVAL	SO YD	1003	487	325	191							
44000600	SIDEWALK REMOVAL	SO FT	825	153	348	324							
67000400	ENGINEER'S FIELD OFFICE, TYPE A	CAL MO	6	2.4	1.2	2.4							
67100100	MOBILIZATION	L SUM	1	0.4	0.2	0.4							
Z0007601	BUILDING REMOVAL NO. 1	L SUM	1	1									
Z0007602	BUILDING REMOVAL NO. 2	L SUM	1	1									
Z0007603	BUILDING REMOVAL NO. 3	L SUM	1		1								
Z0007604	BUILDING REMOVAL NO. 4	L SUM	1			1							
Z0007605	BUILDING REMOVAL NO. 5	L SUM	1			1							
Z0015500	DEBRIS REMOVAL	L SUM	1	0.4	0.2	0.4							
Z0022800	FENCE REMOVAL	FOOT	564	478		86							
Z0030850	TEMPORARY INFORMATION SIGNING	SO FT	32	32									
* Z0049901	REMOVAL AND DISPOSAL OF NON-FRIABLE ASBESTOS, BUILDING NO. 1	L SUM	1	1									
* Z0049902	REMOVAL AND DISPOSAL OF NON-FRIABLE ASBESTOS, BUILDING NO. 2	L SUM	1	1									
* Z0049904	REMOVAL AND DISPOSAL OF NON-FRIABLE ASBESTOS, BUILDING NO. 4	L SUM	1			1							
* Z0049905	REMOVAL AND DISPOSAL OF NON-FRIABLE ASBESTOS, BUILDING NO. 5	L SUM	1			1							
* Z0049804	REMOVAL AND DISPOSAL OF FRIABLE ASBESTOS, BUILDING NO. 4	L SUM	1			1							
* Z0049805	REMOVAL AND DISPOSAL OF FRIABLE ASBESTOS, BUILDING NO. 5	L SUM	1			1							
* SPECIALTY ITEMS													

Rev



**LEGEND**

-  - BUILDING REMOVAL
-  - SIDEWALK REMOVAL
-  - DRIVEWAY PAVEMENT REMOVAL
-  - LINEAL REMOVAL

**NOTES**

1. THE REMOVAL AND DISPOSAL OF ALL DEBRIS AND / OR OBJECTS, INCLUDING LIGHT POLES, WEATHER STATIONS, OVER-THE-AIR ANTENNAS, FLAG POLES, BIRD FEEDERS, RETAINING WALLS AND ANY OTHER STRUCTURES AND ITS FOUNDATIONS THAT ARE NOT PART OF THE BUILDING REMOVAL WITHIN THE CONSTRUCTION LIMITS SHALL BE INCLUDED IN THE UNIT PRICE FOR DEBRIS REMOVAL.
2. ALL OF THE EXISTING TREES AND SHRUBS ARE TO REMAIN ON THE PROPERTY. CONTRACTOR SHALL TAKE AN EXTRA CARE WHEN REMOVING BUILDINGS AND DEBRIS SO THAT EXISTING TREES AND SHRUBS ARE NOT DAMAGED.
3. THE CONTRACTOR'S VEHICLES, EQUIPMENT, AND OPERATIONS MAY NOT ENCROACH UPON THE IL ROUTE 53 TRAVELED WAY AT ANY TIME.
4. CONTRACTOR SHALL INSTALL "TRUCKS ENTERING AND LEAVING HIGHWAY" SIGNS, W21-I105 (MODIFIED) IN EACH DIRECTION ON ILLINOIS ROUTE 53 APPROACHING LOCATION NO. 1 AS SHOWN ON SHEET 5 PRIOR TO ACCESSING SITE NO. 1. THESE SIGNS SHALL BE PAID AS TEMPORARY INFORMATION SIGNING. NO DIRECT ACCESS TO A STATE HIGHWAY SHALL BE ALLOWED FROM ANY OTHER SITE.

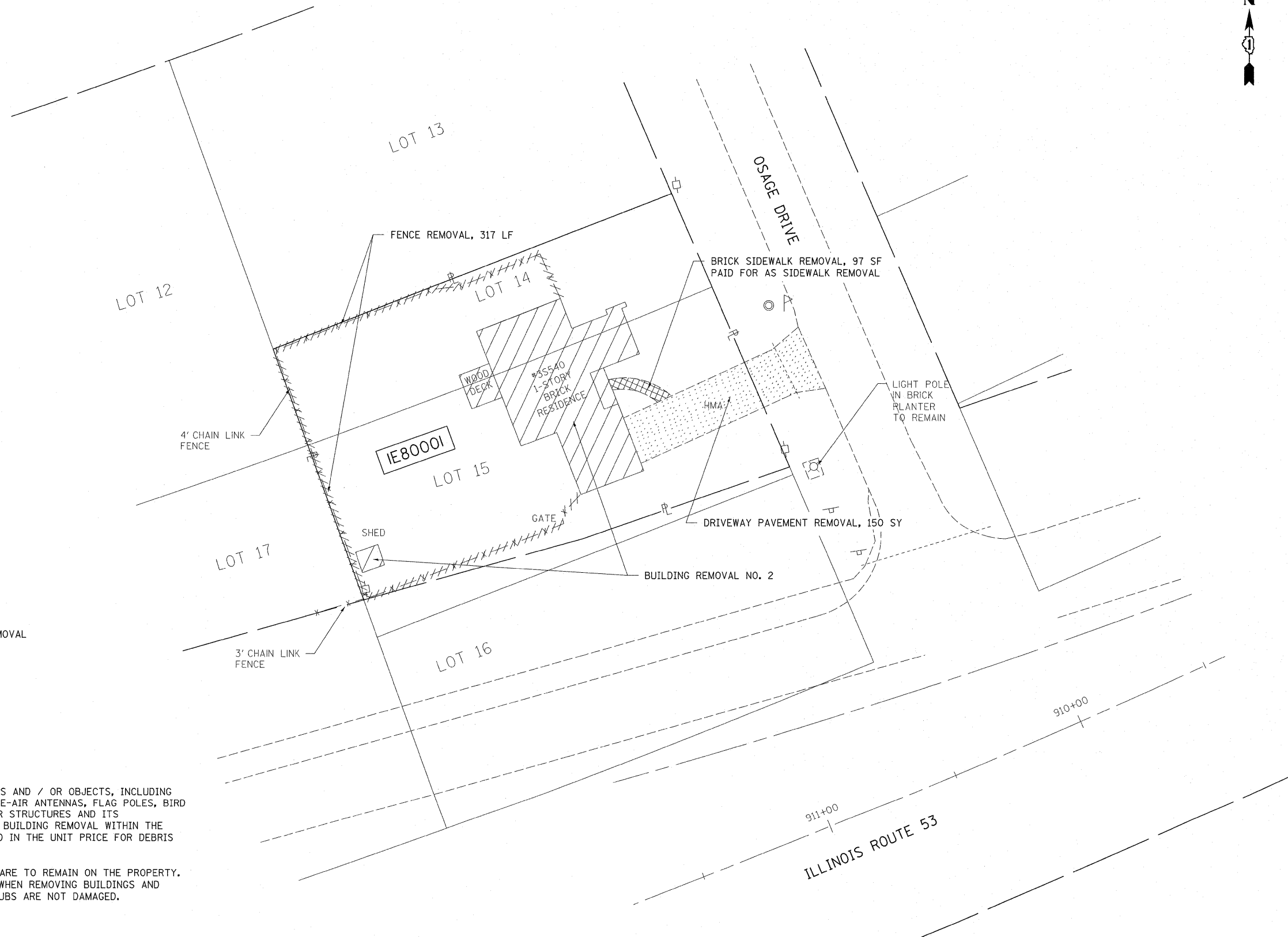
FILE NAME =	USER NAME = pociechal	DESIGNED -	REVISED - LP 08/10/2011
ct:\pwork\pwork\pociechal\0270297\sh	plon.dgn	DRAWN -	REVISED -
	PLOT SCALE = 20.0000' / in.	CHECKED -	REVISED -
	PLOT DATE = 8/18/2011	DATE -	REVISED -

**STATE OF ILLINOIS  
DEPARTMENT OF TRANSPORTATION**

**BUILDING DEMOLITION PLAN  
22W312 IL ROUTE 53, GLEN ELLYN (LOCATION NO. 1)**

SCALE: 1"=20' SHEET NO. 1 OF 5 SHEETS STA. TO STA.

F.A. RTE.	SECTION	COUNTY	TOTAL SHEETS	SHEET NO.
VAR	2011-044-DM	VARIOUS	22	5
CONTRACT NO. 60P53				
ILLINOIS FED. AID PROJECT				



**LEGEND**

- BUILDING REMOVAL
- SIDEWALK REMOVAL
- DRIVEWAY PAVEMENT REMOVAL
- LINEAL REMOVAL

**NOTES**

1. THE REMOVAL AND DISPOSAL OF ALL DEBRIS AND / OR OBJECTS, INCLUDING LIGHT POLES, WEATHER STATIONS, OVER-THE-AIR ANTENNAS, FLAG POLES, BIRD FEEDERS, RETAINING WALLS AND ANY OTHER STRUCTURES AND ITS FOUNDATIONS THAT ARE NOT PART OF THE BUILDING REMOVAL WITHIN THE CONSTRUCTION LIMITS SHALL BE INCLUDED IN THE UNIT PRICE FOR DEBRIS REMOVAL.
2. ALL OF THE EXISTING TREES AND SHRUBS ARE TO REMAIN ON THE PROPERTY. CONTRACTOR SHALL TAKE AN EXTRA CARE WHEN REMOVING BUILDINGS AND DEBRIS SO THAT EXISTING TREES AND SHRUBS ARE NOT DAMAGED.

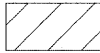

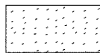
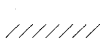
FILE NAME =	USER NAME = pocsechal	DESIGNED -	REVISED -	<b>STATE OF ILLINOIS DEPARTMENT OF TRANSPORTATION</b>	<b>BUILDING DEMOLITION PLAN 3540 OSAGE DRIVE, GLEN ELLYN (LOCATION NO. 2)</b>			F.A. RTE.	SECTION	COUNTY	TOTAL SHEETS	SHEET NO.	
cs:\pw_work\pwsdot\pocsechal\0270297\sh	plan.dgn	DRAWN -	REVISED -		SCALE: 1"=20'	SHEET NO. 2 OF 5 SHEETS	STA.	TO STA.	VAR.	2011-044-DM	VARIOUS	22	6
	PLOT SCALE = 20.0000' / in.	CHECKED -	REVISED -										
	PLOT DATE = 6/29/2011	DATE -	REVISED -										
CONTRACT NO. 60P53													
ILLINOIS FED. AID PROJECT													

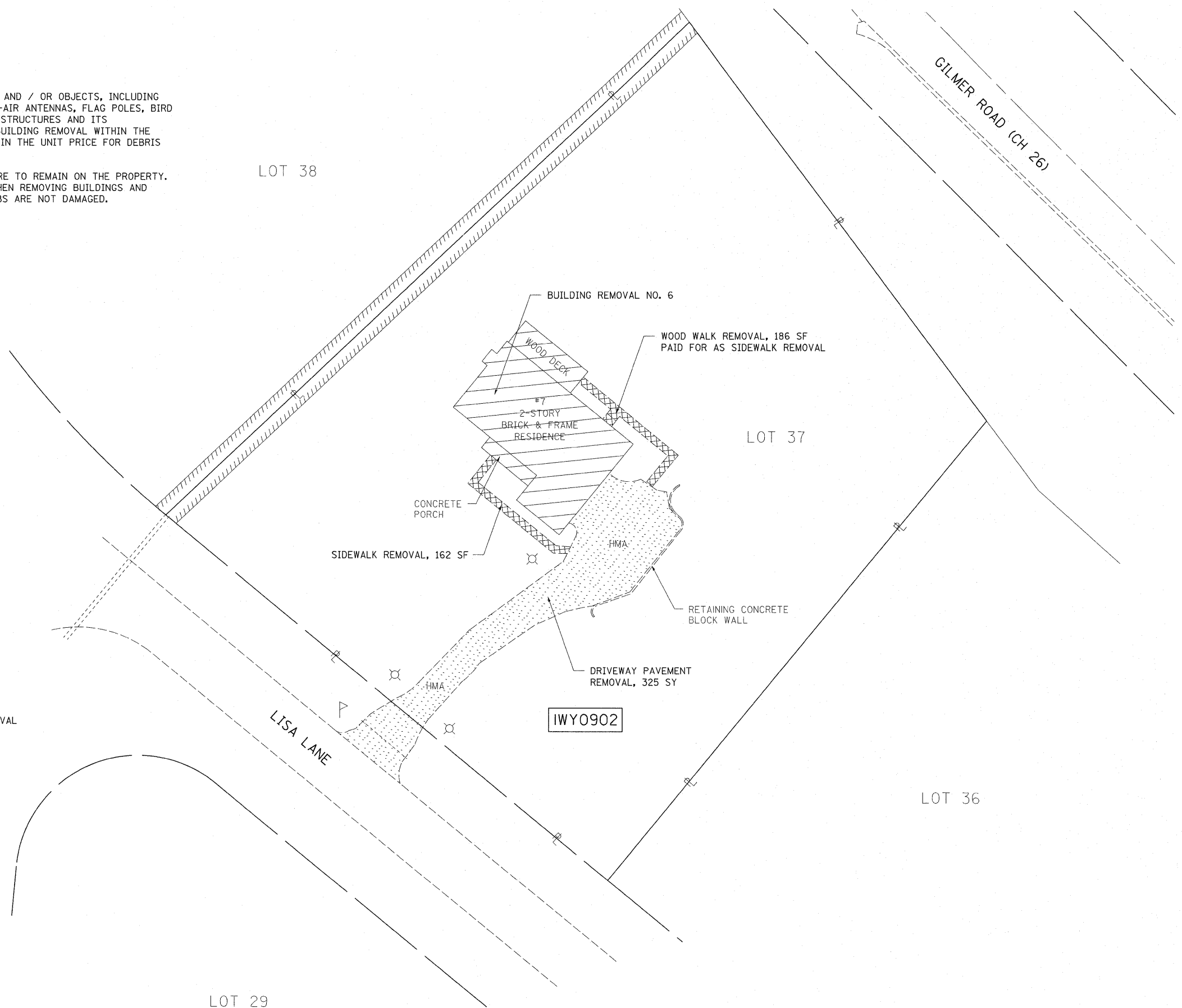
**NOTES**

1. THE REMOVAL AND DISPOSAL OF ALL DEBRIS AND / OR OBJECTS, INCLUDING LIGHT POLES, WEATHER STATIONS, OVER-THE-AIR ANTENNAS, FLAG POLES, BIRD FEEDERS, RETAINING WALLS AND ANY OTHER STRUCTURES AND ITS FOUNDATIONS THAT ARE NOT PART OF THE BUILDING REMOVAL WITHIN THE CONSTRUCTION LIMITS SHALL BE INCLUDED IN THE UNIT PRICE FOR DEBRIS REMOVAL.
2. ALL OF THE EXISTING TREES AND SHRUBS ARE TO REMAIN ON THE PROPERTY. CONTRACTOR SHALL TAKE AN EXTRA CARE WHEN REMOVING BUILDINGS AND DEBRIS SO THAT EXISTING TREES AND SHRUBS ARE NOT DAMAGED.

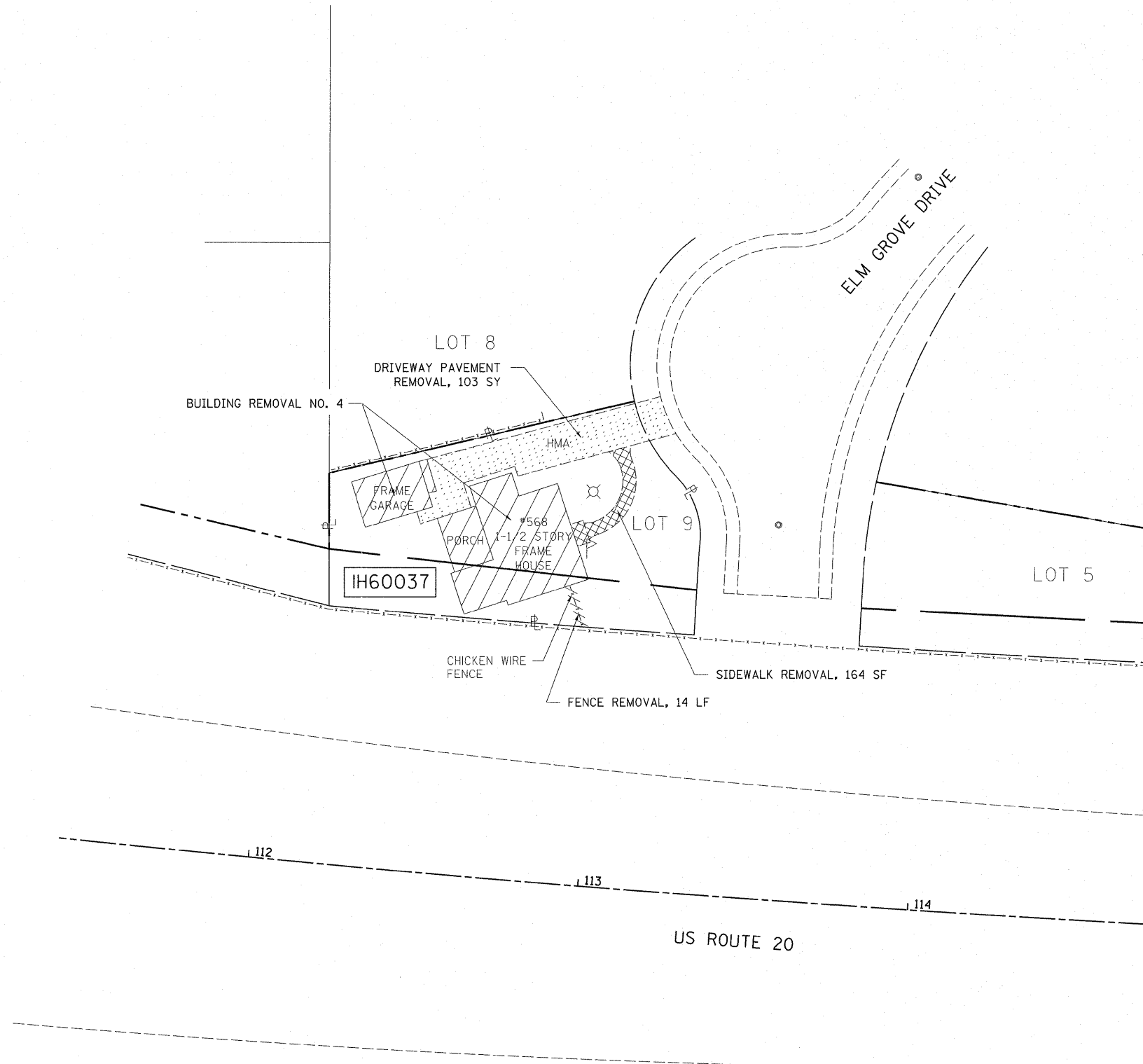
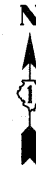


**LEGEND**

-  - BUILDING REMOVAL
-  - SIDEWALK REMOVAL
-  - DRIVEWAY PAVEMENT REMOVAL
-  - LINEAL REMOVAL



FILE NAME =	USER NAME = pocsechal	DESIGNED -	REVISED -	<b>STATE OF ILLINOIS DEPARTMENT OF TRANSPORTATION</b>	<b>BUILDING DEMOLITION PLAN</b>			F.A. RTE.	SECTION	COUNTY	TOTAL SHEETS	SHEET NO.
ct:\pw_work\pwidot\pocsechal\d0270297\sh	p1en.dgn	DRAWN -	REVISED -		<b>7 LISA LANE, HAWTHORN WOODS (LOCATION NO. 3)</b>			VAR	2011-044-DM	VARIOUS	22	7
	PLOT SCALE = 20.0000' / 1" =	CHECKED -	REVISED -		SCALE: 1"=20'	SHEET NO. 3 OF 5 SHEETS	STA.	TO STA.	CONTRACT NO. 60P53			
	PLOT DATE = 6/29/2011	DATE -	REVISED -		ILLINOIS FED. AID PROJECT							



**LEGEND**

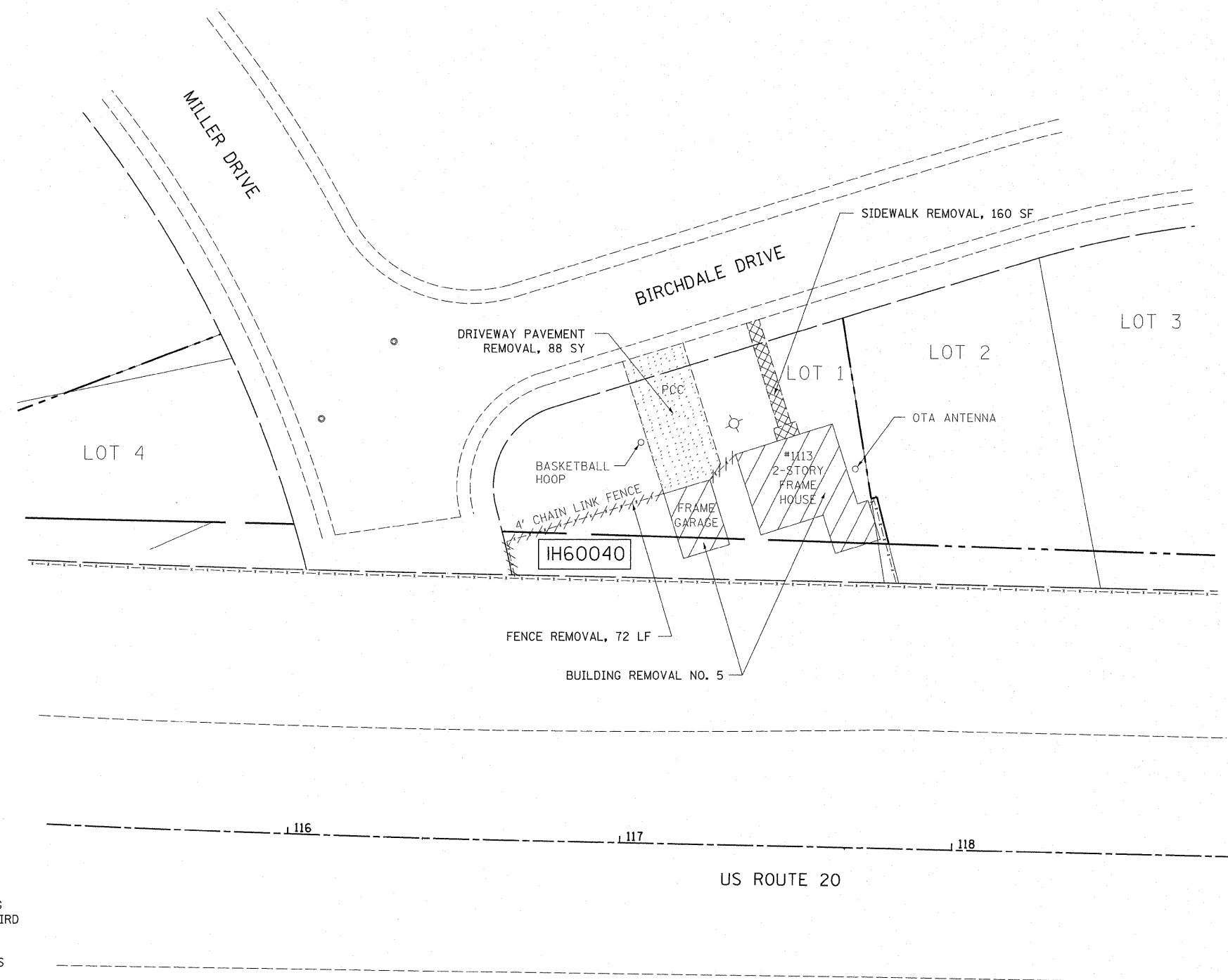
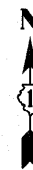
- BUILDING REMOVAL
- SIDEWALK REMOVAL
- DRIVEWAY PAVEMENT REMOVAL
- LINEAL REMOVAL

**NOTES**

1. THE REMOVAL AND DISPOSAL OF ALL DEBRIS AND / OR OBJECTS, INCLUDING LIGHT POLES, WEATHER STATIONS, OVER-THE-AIR ANTENNAS, FLAG POLES, BIRD FEEDERS, RETAINING WALLS AND ANY OTHER STRUCTURES AND ITS FOUNDATIONS THAT ARE NOT PART OF THE BUILDING REMOVAL WITHIN THE CONSTRUCTION LIMITS SHALL BE INCLUDED IN THE UNIT PRICE FOR DEBRIS REMOVAL.
2. ALL OF THE EXISTING TREES AND SHRUBS ARE TO REMAIN ON THE PROPERTY. CONTRACTOR SHALL TAKE AN EXTRA CARE WHEN REMOVING BUILDINGS AND DEBRIS SO THAT EXISTING TREES AND SHRUBS ARE NOT DAMAGED.

FILE NAME =	USER NAME = pociechal	DESIGNED -	REVISED -	<b>STATE OF ILLINOIS DEPARTMENT OF TRANSPORTATION</b>	<b>BUILDING DEMOLITION PLAN</b>			F.A. RTE.	SECTION	COUNTY	TOTAL SHEETS	SHEET NO.
cr\p\work\p\dot\pociechal\d0270297\sh	plendgn	DRAWN -	REVISED -		<b>568 ELM GROVE DRIVE, ELGIN (LOCATION NO. 4)</b>			VAR	2011-044-DM	VARIOUS	22	8
	PLOT SCALE = 20.0000' / 1" =	CHECKED -	REVISED -		SCALE: 1"=20'	SHEET NO. 4 OF 5 SHEETS	STA.	TO STA.		CONTRACT NO. 60P53		
	PLOT DATE = 6/29/2011	DATE -	REVISED -		ILLINOIS FED. AID PROJECT							





**LEGEND**

- BUILDING REMOVAL
- SIDEWALK REMOVAL
- DRIVEWAY PAVEMENT REMOVAL
- LINEAL REMOVAL

**NOTES**

1. THE REMOVAL AND DISPOSAL OF ALL DEBRIS AND / OR OBJECTS, INCLUDING LIGHT POLES, WEATHER STATIONS, OVER-THE-AIR ANTENNAS, FLAG POLES, BIRD FEEDERS, RETAINING WALLS AND ANY OTHER STRUCTURES AND ITS FOUNDATIONS THAT ARE NOT PART OF THE BUILDING REMOVAL WITHIN THE CONSTRUCTION LIMITS SHALL BE INCLUDED IN THE UNIT PRICE FOR DEBRIS REMOVAL.
2. ALL OF THE EXISTING TREES AND SHRUBS ARE TO REMAIN ON THE PROPERTY. CONTRACTOR SHALL TAKE AN EXTRA CARE WHEN REMOVING BUILDINGS AND DEBRIS SO THAT EXISTING TREES AND SHRUBS ARE NOT DAMAGED.

FILE NAME =	USER NAME = pociechal	DESIGNED -	REVISED -	<b>STATE OF ILLINOIS DEPARTMENT OF TRANSPORTATION</b>	<b>BUILDING DEMOLITION PLAN</b>			F.A. RTE.	SECTION	COUNTY	TOTAL SHEETS	SHEET NO.	
ct:\pwork\pwork\pociechal\0270297\sh-plan.dgn		DRAWN -	REVISED -		<b>1113 BIRCHDALE DRIVE, ELGIN (LOCATION NO. 5)</b>			VAR	2011-044-DM	VARIOUS	22	9	
		CHECKED -	REVISED -		SCALE: 1"=20'			SHEET NO. 5 OF 5 SHEETS		STA. TO STA.		CONTRACT NO. 60P53	
		DATE -	REVISED -		ILLINOIS FED. AID PROJECT								

**LANDSCAPING AND EROSION CONTROL SCHEDULE OF QUANTITIES**

LOCATION	TOPSOIL FURNISH & PLACE, 4" (SQ YD)	SEEDING, CLASS 2 (ACRE)	MULCH, METHOD 1 (ACRE)	PERIMETER EROSION BARRIER (LF)
LOCATION #1: 22W312 IL ROUTE 53, GLEN ELLYN, IL, 60137	611	0.13	0.13	192
LOCATION #2: 3S540 OSAGE DRIVE, GLEN ELLYN, IL, 60137	461	0.10	0.10	429
LOCATION #3: 7 LISA LANE, HAWTHORN WOODS, IL, 62234	659	0.14	0.14	205
LOCATION #4: 568 ELM GROVE DRIVE, ELGIN, IL, 60123	298	0.06	0.06	62
LOCATION #5: 1113 BIRCHDALE DRIVE, ELGIN, IL, 60123	244	0.05	0.05	145
<b>TOTAL</b>	<b>2,273</b>	<b>0.47</b>	<b>0.47</b>	<b>1,033</b>

**EROSION CONTROL GENERAL NOTES**

ALL EROSION CONTROL MEASURES SHALL BE IN ACCORDANCE WITH THE PROCEDURES AND STANDARDS FOR URBAN SOIL EROSION AND SEDIMENTATION CONTROL MANUAL.

SOIL DISTURBANCE SHALL BE CONDUCTED IN SUCH A MANNER AS TO MINIMIZE EROSION. SOIL STABILIZATION MEASURES SHALL CONSIDER THE TIME OF YEAR, SITE CONDITIONS, AND THE USE OF TEMPORARY OR PERMANENT MEASURES.

SOIL EROSION AND SEDIMENTATION CONTROL FEATURES SHALL BE CONSTRUCTED PRIOR TO THE COMMENCEMENT OF UPLAND DISTURBANCE.

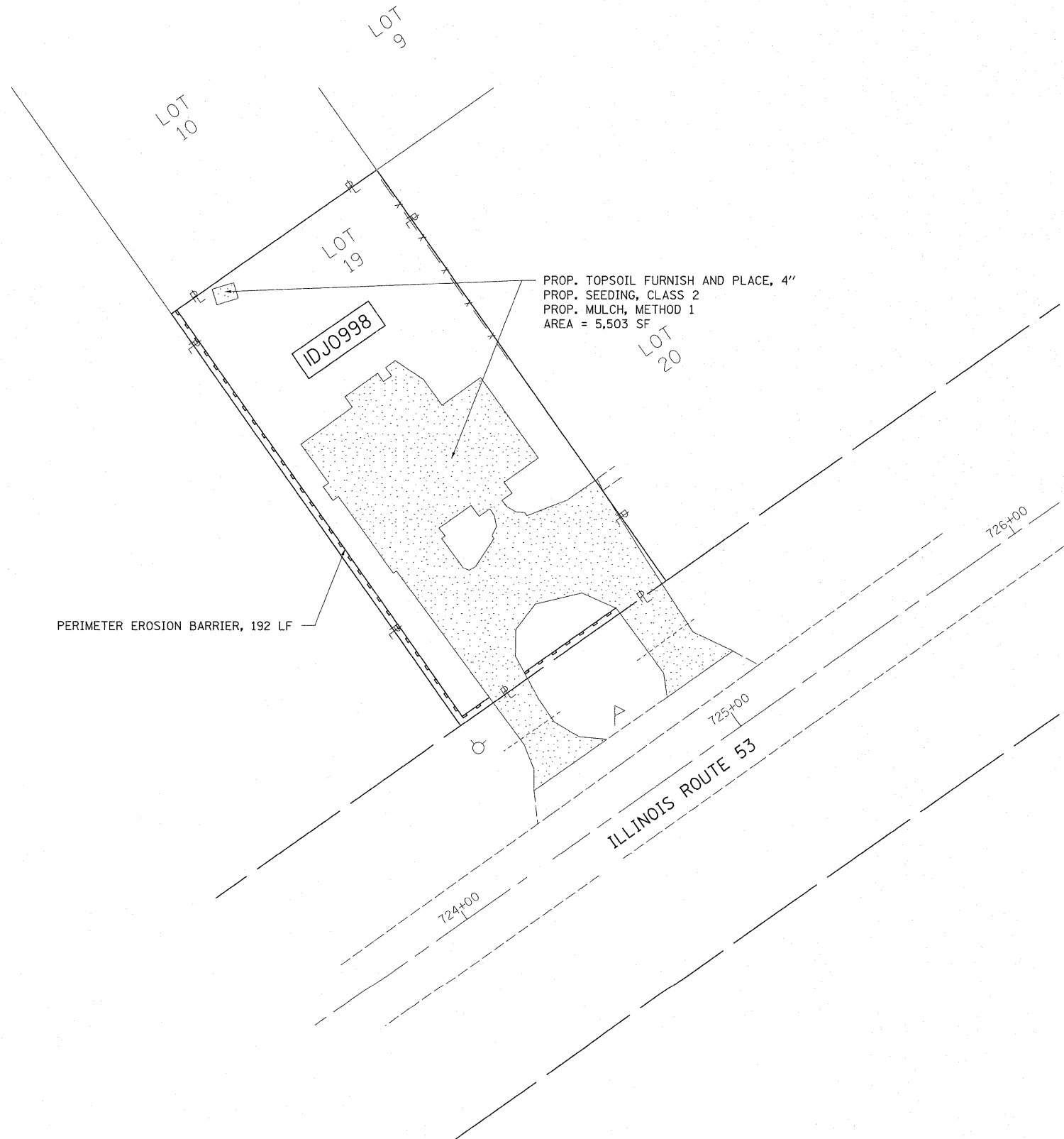
TEMPORARY SOIL STABILIZATION SHALL BE APPLIED TO DISTURBED AREAS WITHIN 14 CALENDAR DAYS OF THE END OF THE ACTIVE HYDROLOGIC DISTURBANCE. PERMANENT STABILIZATION SHALL BE DONE WITHIN 14 DAYS AFTER COMPLETION OF THE FINAL GRADING OF THE SOIL.

ALL TEMPORARY EROSION AND SEDIMENT CONTROL MEASURES SHALL BE REMOVED WITHIN 30 DAYS AFTER FINAL SITE STABILIZATION IS ACHIEVED OR AFTER TEMPORARY MEASURES ARE NO LONGER NEEDED. TRAPPED SEDIMENT AND OTHER DISTURBED SOIL AREAS SHALL BE PERMANENTLY STABILIZED.

ALL TEMPORARY AND PERMANENT EROSION CONTROL MEASURES MUST BE MAINTAINED AND REPAIRED AS NEEDED. THE GENERAL CONTRACTOR WILL BE RESPONSIBLE FOR INSPECTION AND REPAIR DURING CONSTRUCTION. THE OWNER WILL BE RESPONSIBLE IF EROSION CONTROL IS REQUIRED AFTER THE CONTRACTOR HAS COMPLETED THE PROJECT.

THE EROSION CONTROL MEASURES INDICATED ON THE PLANS ARE THE MINIMUM REQUIREMENTS. ADDITIONAL MEASURES MAY BE REQUIRED, AS DIRECTED BY THE ENGINEER OR GOVERNING AGENCY.

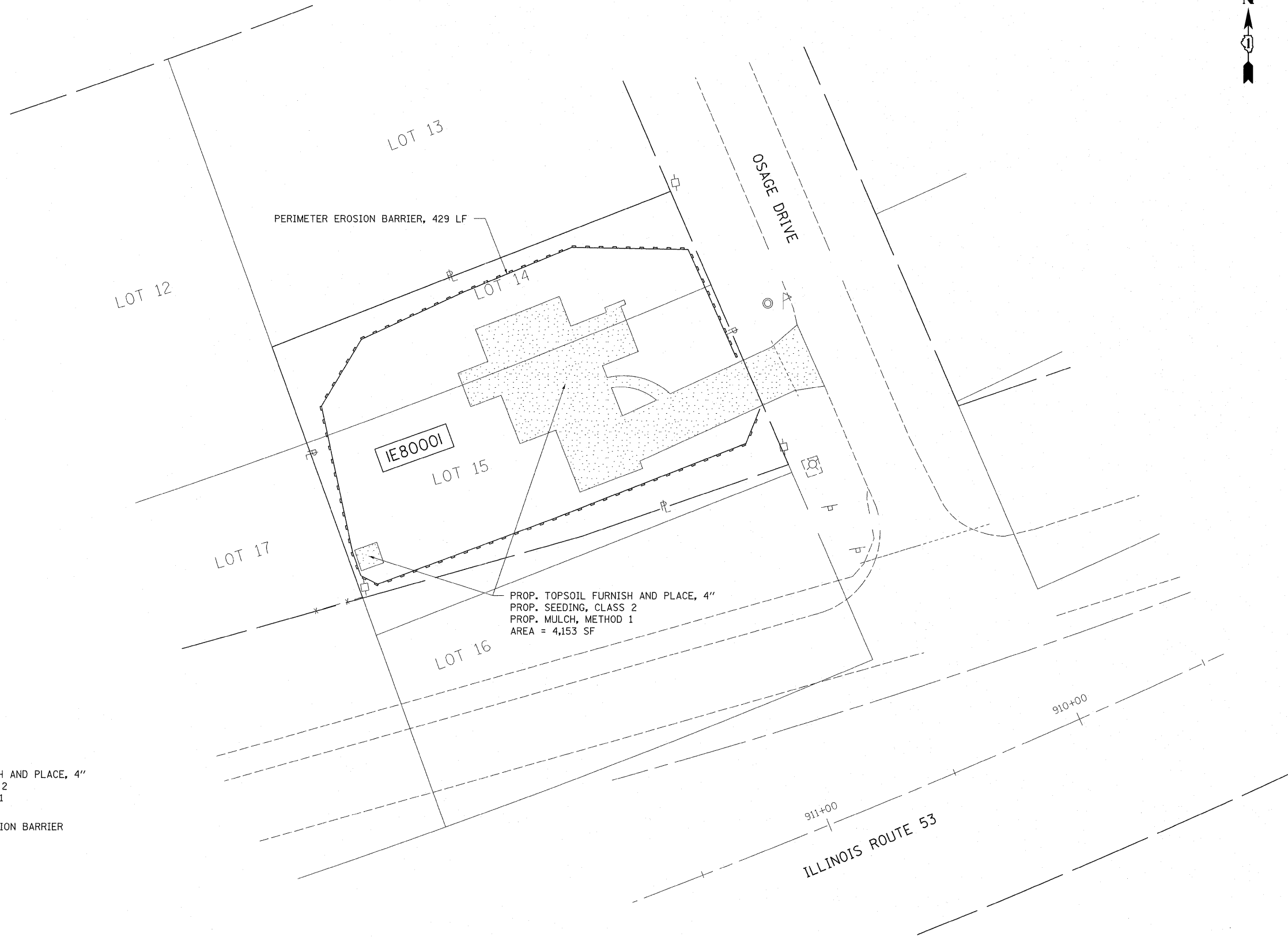
FILE NAME =	USER NAME = pocsechal	DESIGNED -	REVISED -	<b>STATE OF ILLINOIS DEPARTMENT OF TRANSPORTATION</b>	<b>LANDSCAPING AND EROSION CONTROL GENERAL NOTES AND SCHEDULES OF QUANTITIES</b>	F.A. RTE.	SECTION	COUNTY	TOTAL SHEETS	SHEET NO.	
c:\pwork\pwork\pocsechal\0270297\sh	plan.dgn	DRAWN -	REVISED -			VAR	2011-044-DM	VARIOUS	22	10	
	PLOT SCALE = 20.0000' / 1" =	CHECKED -	REVISED -			CONTRACT NO. 60P53					
	PLOT DATE = 6/30/2011	DATE -	REVISED -			SCALE: NONE	SHEET NO. 1 OF 1 SHEETS	STA.	TO STA.	ILLINOIS FED. AID PROJECT	



**LEGEND**

- TOPSOIL FURNISH AND PLACE, 4"
- SEEDING, CLASS 2
- MULCH, METHOD 1
- PERIMETER EROSION BARRIER

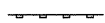
FILE NAME =	USER NAME = pocsechal	DESIGNED -	REVISED -	<b>STATE OF ILLINOIS DEPARTMENT OF TRANSPORTATION</b>	<b>LANDSCAPING AND EROSION CONTROL PLAN</b>			F.A. RTE.	SECTION	COUNTY	TOTAL SHEETS	SHEET NO.
cz:\pw_work\pwidot\pocsechal\d0270297\sh	plan.dgn	DRAWN -	REVISED -		<b>22W312 IL ROUTE 53, GLEN ELLYN (LOCATION NO. 1)</b>			VAR	2011-044-DM	VARIOUS	22	11
	PLOT SCALE = 20.0000 / / in.	CHECKED -	REVISED -		SCALE: 1"=20'    SHEET NO. 1 OF 5 SHEETS    STA.    TO STA.			CONTRACT NO. 60P53				
	PLOT DATE = 6/29/2011	DATE -	REVISED -		ILLINOIS FED. AID PROJECT							



**LEGEND**



- TOPSOIL FURNISH AND PLACE, 4"
- SEEDING, CLASS 2
- MULCH, METHOD 1



- PERIMETER EROSION BARRIER

FILE NAME =	USER NAME = pocsechal	DESIGNED -	REVISED -
c:\pwork\pwork\pocsechal\0270297\sh	plan.dgn	DRAWN -	REVISED -
PLOT SCALE = 20.0000' / 1"	CHECKED -	REVISED -	REVISED -
PLOT DATE = 6/29/2011	DATE -	REVISED -	REVISED -




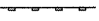
**STATE OF ILLINOIS  
DEPARTMENT OF TRANSPORTATION**

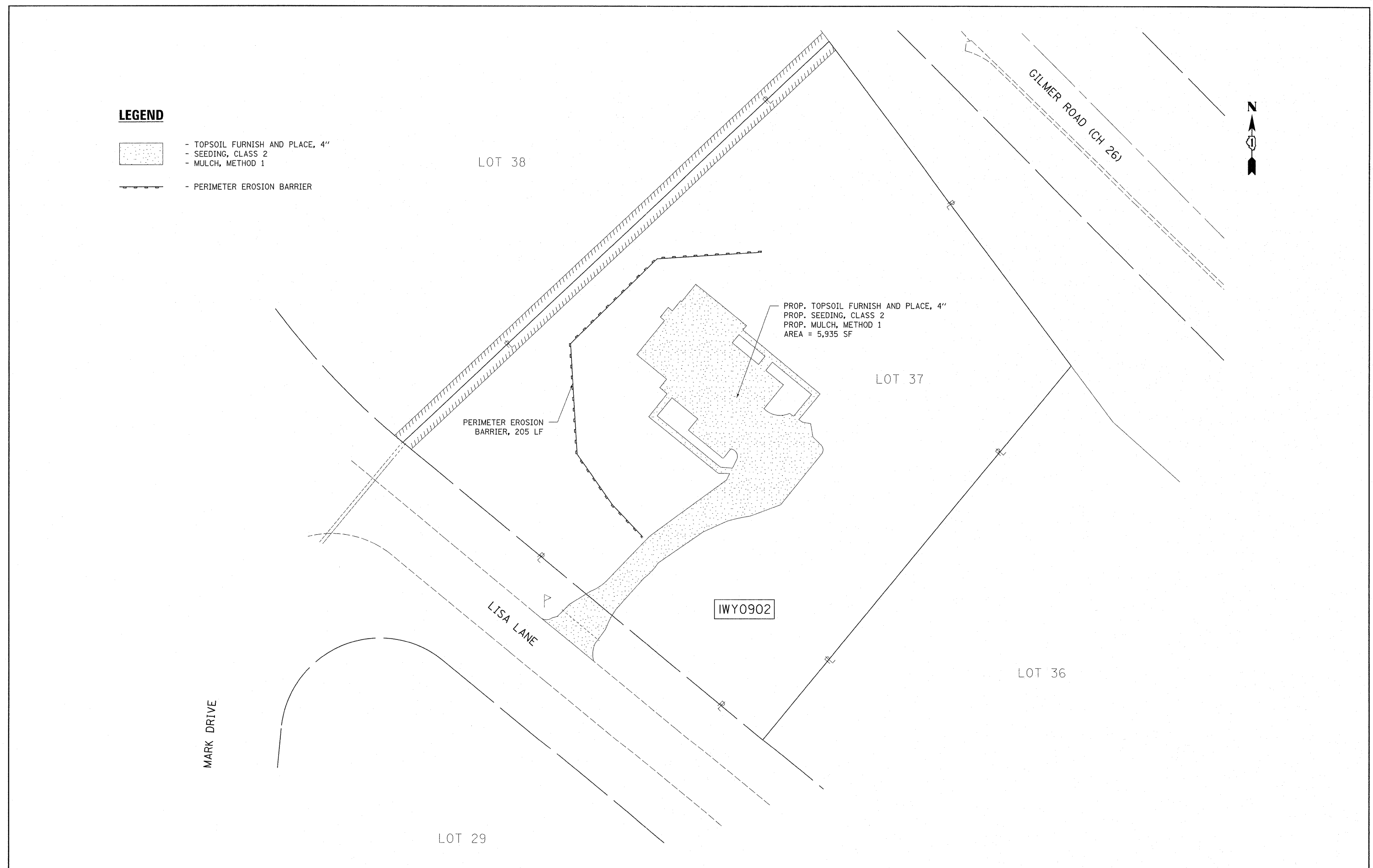
**LANDSCAPING AND EROSION CONTROL PLAN  
35540 OSAGE DRIVE, GLEN ELLYN (LOCATION NO. 2)**

SCALE: 1"=20' SHEET NO. 2 OF 5 SHEETS STA. TO STA.

F.A. RTE.	SECTION	COUNTY	TOTAL SHEETS	SHEET NO.
VAR.	2011-044-DM	VARIOUS	22	12
CONTRACT NO. 60P53			ILLINOIS FED. AID PROJECT	

**LEGEND**

-  - TOPSOIL FURNISH AND PLACE, 4"
-  - SEEDING, CLASS 2
-  - MULCH, METHOD 1
-  - PERIMETER EROSION BARRIER



PROP. TOPSOIL FURNISH AND PLACE, 4"  
 PROP. SEEDING, CLASS 2  
 PROP. MULCH, METHOD 1  
 AREA = 5,935 SF

PERIMETER EROSION BARRIER, 205 LF

IWY0902

FILE NAME =  
 c:\pwork\pwork\pociechal\0270297\sk-plen.dgn

USER NAME = pociechal  
 PLOT SCALE = 20.0000' / 1" =  
 PLOT DATE = 6/29/2011

DESIGNED -  
 DRAWN -  
 CHECKED -  
 DATE -

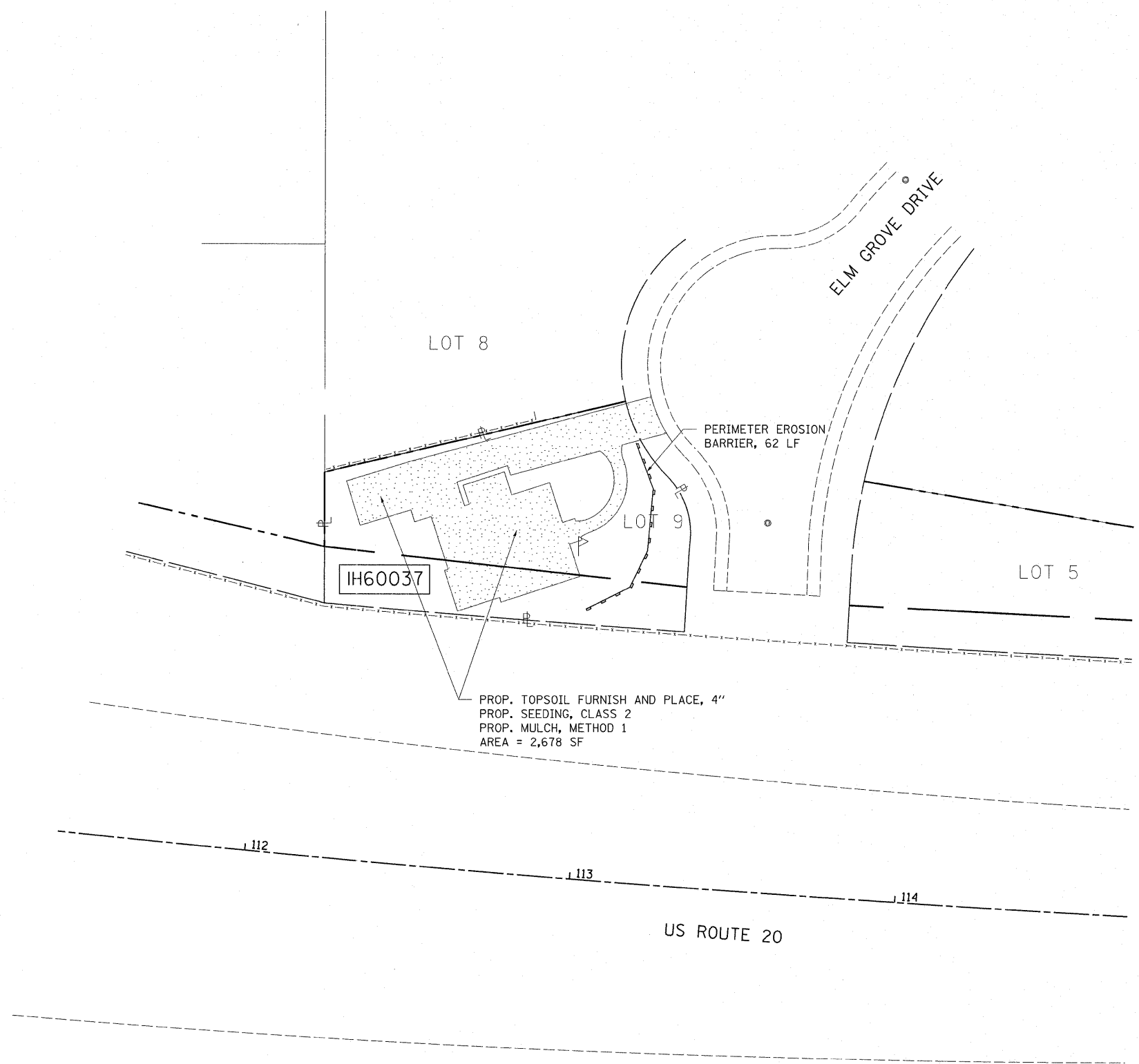
REVISED -  
 REVISED -  
 REVISED -  
 REVISED -

**STATE OF ILLINOIS  
 DEPARTMENT OF TRANSPORTATION**

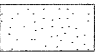



**LANDSCAPING AND EROSION CONTROL PLAN  
 7 LISA LANE, HAWTHORN WOODS (LOCATION NO. 3)**

SCALE: 1"=20'    SHEET NO. 3 OF 5 SHEETS    STA.    TO STA.

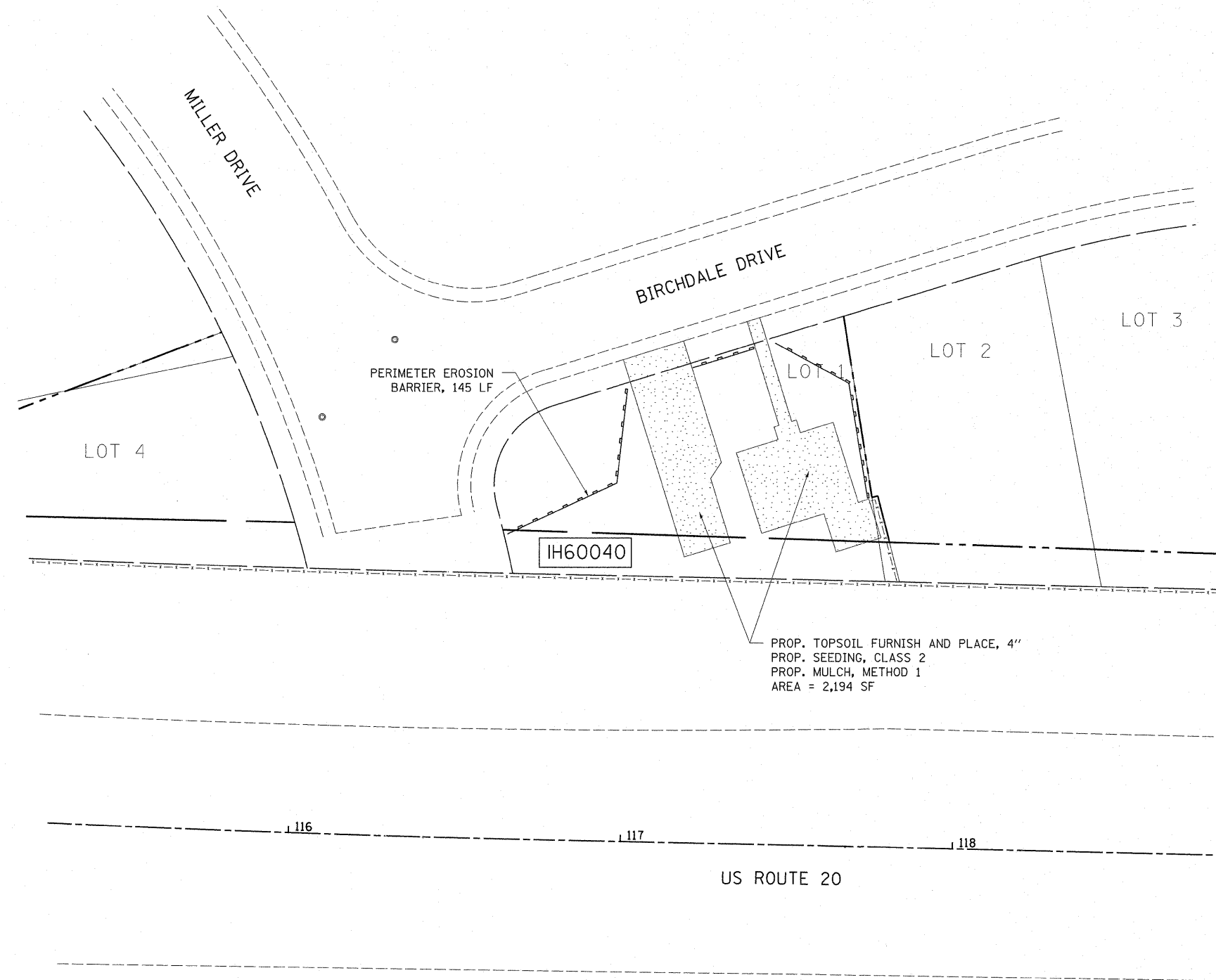
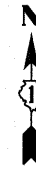
F.A. RTE.	SECTION	COUNTY	TOTAL SHEETS	SHEET NO.
VAR	2011-044-DM	VARIOUS	22	13
CONTRACT NO. 60P53				
ILLINOIS FED. AID PROJECT				



**LEGEND**

-  - TOPSOIL FURNISH AND PLACE, 4"
-  - SEEDING, CLASS 2
-  - MULCH, METHOD 1
-  - PERIMETER EROSION BARRIER

FILE NAME = c:\pwork\pwidot\pocsechal\0270297\sh	USER NAME = pocsechal	DESIGNED -	REVISED -	<b>STATE OF ILLINOIS DEPARTMENT OF TRANSPORTATION</b>	<b>LANDSCAPING AND EROSION CONTROL PLAN 568 ELM GROVE DRIVE, ELGIN (LOCATION NO. 4)</b>			F.A. RTE.	SECTION	COUNTY	TOTAL SHEETS	SHEET NO.
	plan.dgn	DRAWN -	REVISED -					VAR	2011-044-DM	VARIOUS	22	14
	PLOT SCALE = 20.0000' / 1" =	CHECKED -	REVISED -		SCALE: 1"=20'	SHEET NO. 4 OF 5 SHEETS	STA.	TO STA.	ILLINOIS FED. AID PROJECT			
	PLOT DATE = 6/29/2011	DATE -	REVISED -						CONTRACT NO. 60P53			



**LEGEND**



- TOPSOIL FURNISH AND PLACE, 4"  
 - SEEDING, CLASS 2  
 - MULCH, METHOD 1



- PERIMETER EROSION BARRIER

FILE NAME =	USER NAME = pociechal	DESIGNED -	REVISED -
ca:\pwork\pwork\pociechal\0270297\sh	plon.dgn	DRAWN -	REVISED -
	PLOT SCALE = 20.0000' / in.	CHECKED -	REVISED -
	PLOT DATE = 6/29/2011	DATE -	REVISED -

**STATE OF ILLINOIS  
 DEPARTMENT OF TRANSPORTATION**

**LANDSCAPING AND EROSION CONTROL PLAN  
 1113 BIRCHDALE DRIVE, ELGIN (LOCATION NO. 5)**

SCALE: 1"=20'    SHEET NO. 5 OF 5 SHEETS    STA.    TO STA.

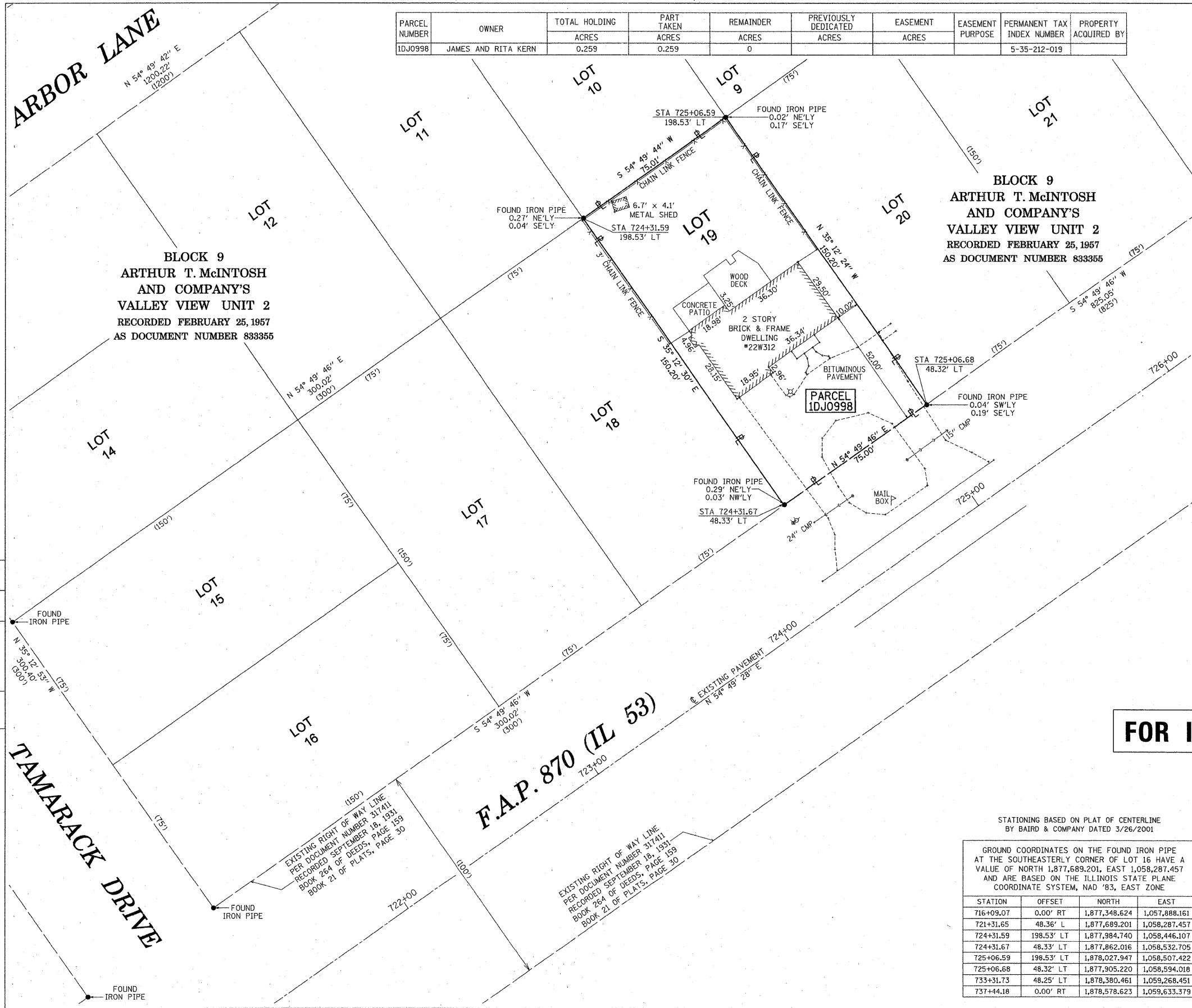
F.A. RTE.	SECTION	COUNTY	TOTAL SHEETS	SHEET NO.
VAR	2011-044-DM	VARIOUS	22	15
CONTRACT NO. 60P53			ILLINOIS FED. AID PROJECT	

PART OF THE SOUTH HALF OF SECTION 35, TOWNSHIP 39 NORTH, RANGE 10 EAST OF THE THIRD PRINCIPAL MERIDIAN, DuPAGE COUNTY, ILLINOIS

PARCEL NUMBER	OWNER	TOTAL HOLDING ACRES	PART TAKEN ACRES	REMAINDER ACRES	PREVIOUSLY DEDICATED ACRES	EASEMENT ACRES	EASEMENT PURPOSE	PERMANENT TAX INDEX NUMBER	PROPERTY ACQUIRED BY
10J0998	JAMES AND RITA KERN	0.259	0.259	0				5-35-212-019	

F.A.P.	SECTION	COUNTY	TOTAL SHEET	SHEET NO.
870		DuPAGE	1	1

STATION 722+00.00 TO STATION 726+00.00  
FED. ROAD DIST. 1 ILLINOIS FED. AID PROJECT



**LEGEND**

BEARINGS ARE REFERENCED TO THE ILLINOIS STATE PLANE COORDINATE SYSTEM, NAD '83, EAST ZONE, ON THE SOUTHEASTERLY LINE OF BLOCK 9 IN ARTHUR T. McINTOSH AND COMPANY'S VALLEY VIEW UNIT 2, AND ALSO THE NORTHWESTERLY RIGHT OF WAY LINE OF FAP 870 (IL 53), OF N 54° 49' 46" E

SECTION CORNER  
QUARTER SECTION CORNER

SECTION LINE  
QUARTER SECTION LINE  
QUARTER QUARTER SECTION LINE  
PLATTED LOT LINE  
PROPERTY (DEED) LINE  
APPARENT PROPERTY LINE  
CENTERLINE  
EXISTING RIGHT OF WAY LINE  
PROPOSED RIGHT OF WAY LINE  
PROPOSED EASEMENT  
MEASURED DIMENSION  
COMPUTED DIMENSION  
RECORDED DATA  
EXISTING BUILDING

129.32'  
129.32' (COMP)

IRON PIPE OR ROD FOUND  
CUT CROSS FOUND OR SET  
T1 THESE STAKES REFERENCE FOUND OR SET MONUMENTATION. SET 3/8" IRON ROD FLUSH WITH GROUND TO TIE FOUND IRON STAKE. IDENTIFIED BY COLORED PLASTIC CAP BEARING SURVEYORS REGISTRATION NUMBER.  
T2  
T3

STAKING OF PROPOSED RIGHT OF WAY, SET DIVISION OF HIGHWAYS SURVEY MARKER TO MONUMENT THE POSITION SHOWN, IDENTIFIED BY INSCRIPTION DATA AND SURVEYORS REGISTRATION NUMBER.

PERMANENT SURVEY MARKER, I.D.O.T. STD. 2135 (TO BE SET BY OTHERS)

RIGHT OF WAY STAKING PROPOSED TO BE SET.

STATE OF ILLINOIS } S.S.  
COUNTY OF COOK

THIS IS TO CERTIFY THAT I, WILLIAM J. FLEMING, AN ILLINOIS PROFESSIONAL LAND SURVEYOR, HAVE SURVEYED THE PLAT OF HIGHWAYS SHOWN HEREON IN SECTION 35, TOWNSHIP 39 NORTH, RANGE 10 EAST OF THE THIRD PRINCIPAL MERIDIAN, DuPAGE COUNTY; THAT THE SURVEY IS TRUE AND COMPLETE AS SHOWN TO THE BEST OF MY KNOWLEDGE AND BELIEF; THAT THE PLAT CORRECTLY REPRESENTS SAID SURVEY; THAT ALL MONUMENTS FOUND AND ESTABLISHED ARE OF PERMANENT QUALITY AND OCCUPY THE POSITIONS SHOWN THEREON AND THAT THE MONUMENTS ARE SUFFICIENT TO ENABLE THE SURVEY TO BE RETRACED, MADE FOR THE ILLINOIS DEPARTMENT OF TRANSPORTATION.

DATED AT CHICAGO, ILLINOIS THIS 14TH DAY OF APRIL, A.D. 2008.

WILLIAM J. FLEMING  
ILLINOIS PROFESSIONAL LAND SURVEYOR 35-3226  
EXPIRES 11/30/2008

**FOR INFORMATION ONLY**

STATIONING BASED ON PLAT OF CENTERLINE BY BAIRD & COMPANY DATED 3/26/2001

STATION	OFFSET	NORTH	EAST
716+09.07	0.00' RT	1,877,348.624	1,057,888.161
721+31.65	48.36' L	1,877,689.201	1,058,287.457
724+31.59	198.53' LT	1,877,984.740	1,058,446.107
724+31.67	48.33' LT	1,877,862.016	1,058,532.705
725+06.59	198.53' LT	1,878,027.947	1,058,507.422
725+06.68	48.32' LT	1,877,905.220	1,058,594.018
733+31.73	48.25' LT	1,878,380.461	1,059,268.451
737+44.18	0.00' RT	1,878,578.623	1,059,633.379

PTB 138/001  
WORK ORDER 26  
GASAI PROJECT  
20063022.26

GRAEF, ANHALT, SCHLOEMER & ASSOCIATES, INC.  
ENGINEERS & LAND SURVEYORS  
8501 N. Higgins Road, Suite 280  
Chicago, Illinois 60631  
(773) 399-0122

REVISION	DATE	DESCRIPTION

**PLAT OF HIGHWAYS**  
STATE OF ILLINOIS  
DEPARTMENT OF TRANSPORTATION  
FAP 870 (IL 53)

SECTION DuPAGE COUNTY  
PROJECT JOB NO. R-91-067-00  
STATION 722+00 TO STATION 725+00  
SCALE: 1" = 20' SHEET 1 OF 1

BUREAU OF LAND ACQUISITION  
201 WEST CENTER COURT  
SCHAUMBURG, ILLINOIS 60196-1096

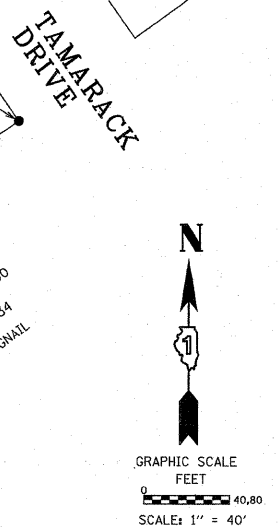
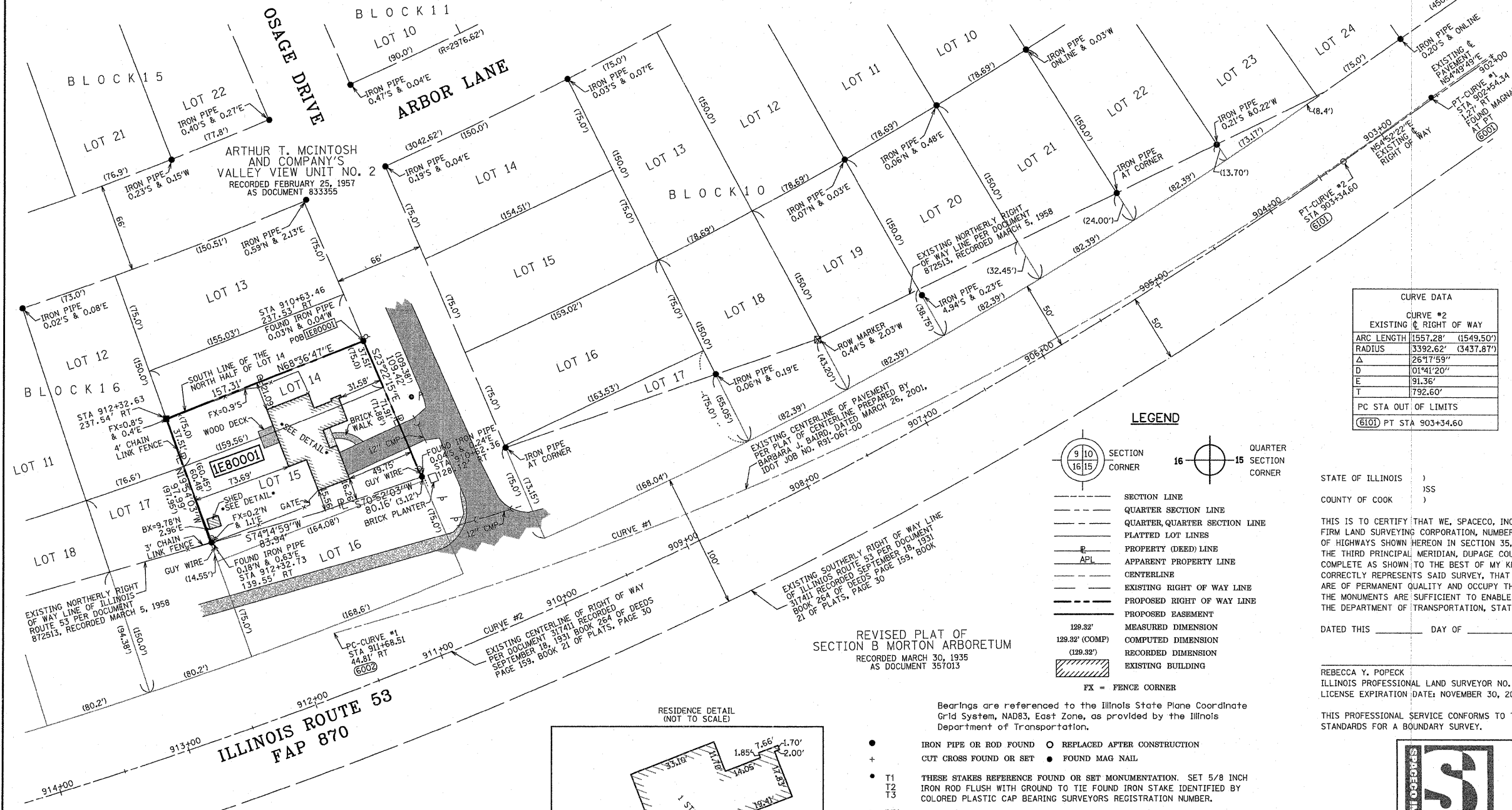
BY	DATE

R.O.W. MADE CHECKED PLOTTED  
BOOK #



PART OF THE SOUTH HALF OF SECTION 35, TWP, 39 N., R. 10 E. OF THE 3RD, P.M., IN DUPAGE COUNTY, ILLINOIS

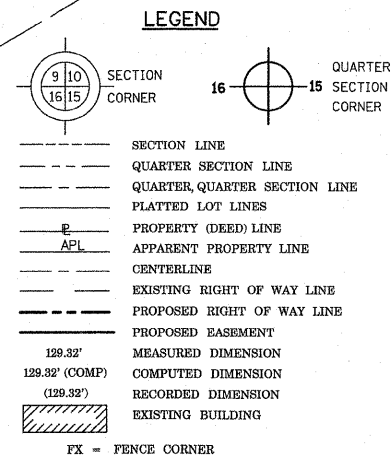
PARCEL NUMBER	OWNER	TOTAL HOLDINGS ACRES	PART TAKEN ACRES	AREA IN EXISTING R.O.W. ACRES	REMAINDER AREA ACRES	EASEMENT AREA ACRES	EASEMENT PURPOSE	PERMANENT INDEX NUMBER	PROPERTY ACQUIRED BY
1E80001	EDWARD W. KUNS, A SINGLE PERSON	0.386	0.386	N/A	0.000	N/A	N/A	05-35-301-040	



CURVE DATA	
CURVE #1 EXISTING C/P PAVEMENT	
ARC LENGTH	911.49'
RADIUS	2495.86'
CHORD LENGTH	906.43'
BEARING	N64°01'27\"/>
Δ	20°55'28\"/>
D	02°17'44\"/>
E	42.20'
T	460.88'
PC STA 911+68.51 44.81' RT	
PT STA 902+54.34 1.27' RT	
N 1,877,075.00 E 1,057,517.22	
N 1,877,348.74 E 1,057,887.99	

CURVE DATA	
CURVE #2 EXISTING C/P RIGHT OF WAY	
ARC LENGTH	1557.28' (1549.50')
RADIUS	3392.62' (3437.87')
Δ	26°17'59\"/>
D	01°41'20\"/>
E	91.36'
T	792.60'
PC STA OUT OF LIMITS	
(600) PT STA 903+34.60	



STATE OF ILLINOIS )  
COUNTY OF COOK )

THIS IS TO CERTIFY THAT WE, SPACECO, INC. AN ILLINOIS PROFESSIONAL DESIGN FIRM LAND SURVEYING CORPORATION, NUMBER 184-001157, HAVE SURVEYED THE PLAT OF HIGHWAYS SHOWN HEREON IN SECTION 35, TOWNSHIP 39 NORTH, RANGE 10 EAST OF THE THIRD PRINCIPAL MERIDIAN, DUPAGE COUNTY, THAT THE SURVEY IS TRUE AND COMPLETE AS SHOWN TO THE BEST OF MY KNOWLEDGE AND BELIEF, THAT THE PLAT CORRECTLY REPRESENTS SAID SURVEY, THAT ALL MONUMENTS FOUND AND ESTABLISHED ARE OF PERMANENT QUALITY AND OCCUPY THE POSITIONS SHOWN THEREON AND THAT THE MONUMENTS ARE SUFFICIENT TO ENABLE THE SURVEY TO BE RETRACED, MADE FOR THE DEPARTMENT OF TRANSPORTATION, STATE OF ILLINOIS.

DATED THIS \_\_\_\_\_ DAY OF \_\_\_\_\_ 20\_\_\_\_ A.D. AT ROSEMONT, ILLINOIS

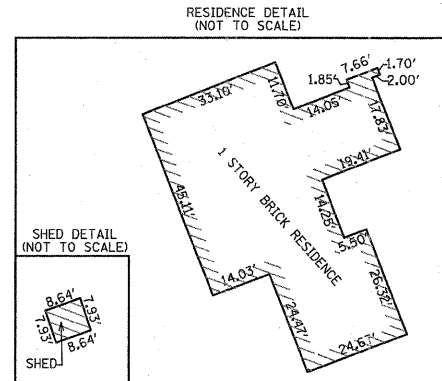
REBECCA Y. POPECK  
ILLINOIS PROFESSIONAL LAND SURVEYOR NO. 035-003642  
LICENSE EXPIRATION DATE: NOVEMBER 30, 2010

THIS PROFESSIONAL SERVICE CONFORMS TO THE CURRENT ILLINOIS MINIMUM STANDARDS FOR A BOUNDARY SURVEY.

REVISED PLAT OF SECTION B MORTON ARBORETUM  
RECORDED MARCH 30, 1935  
AS DOCUMENT 357013

Bearings are referenced to the Illinois State Plane Coordinate Grid System, NAD83, East Zone, as provided by the Illinois Department of Transportation.

- IRON PIPE OR ROD FOUND ○ REPLACED AFTER CONSTRUCTION
- + CUT CROSS FOUND OR SET ● FOUND MAG NAIL
- T1 THESE STAKES REFERENCE FOUND OR SET MONUMENTATION. SET 5/8 INCH IRON ROD FLUSH WITH GROUND TO TIE FOUND IRON STAKE IDENTIFIED BY COLORED PLASTIC CAP BEARING SURVEYORS REGISTRATION NUMBER.
- T2
- T3
- BT1 THESE STAKES IN CULTIVATED AREAS REFERENCE FOUND OR SET MONUMENTATION. BURIED 5/8 INCH IRON ROD 20 INCHES BELOW GROUND TO TIE FOUND IRON STAKE. IDENTIFIED BY COLORED PLASTIC CAP BEARING SURVEYORS REGISTRATION NUMBER.
- BT2
- BT3
- STAKING OF PROPOSED RIGHT OF WAY. SET DIVISION OF HIGHWAYS SURVEY MARKER TO MONUMENT THE POSITION SHOWN. IDENTIFIED BY INSCRIPTION DATA AND SURVEYORS REGISTRATION NUMBER.
- STAKING OF PROPOSED RIGHT OF WAY IN CULTIVATED AREAS. BURIED 5/8 INCH METAL ROD 20 INCHES BELOW GROUND TO MARK FUTURE SURVEY MARKER POSITION IDENTIFIED BY COLORED PLASTIC CAP BEARING SURVEYORS REGISTRATION NUMBER.
- PERMANENT SURVEY MARKER, I.D.O.T. STANDARD 2135 (TO BE SET BY OTHERS)
- RIGHT OF WAY STAKING PROPOSED TO BE SET
- PERMANENT SURVEY MARKER, I.D.O.T. STANDARD 2135 (TO BE SET BY OTHERS)
- RIGHT OF WAY STAKING PROPOSED TO BE SET



**FOR INFORMATION ONLY**

RECEIVED  
MAY 22 2009  
PLATS & LEGALS

**SPACECO INC.**  
CONSULTING ENGINEERS  
SITE DEVELOPMENT ENGINEERS  
LAND SURVEYORS  
9575 W. Higgins Road, Suite 700  
Rosemont, Illinois 60018  
Phone: (847) 696-4060 Fax: (847) 696-4065

**PLAT OF HIGHWAYS**  
STATE OF ILLINOIS  
DEPARTMENT OF TRANSPORTATION  
ILLINOIS ROUTE 53 (FAP 870)

SECTION: COUNTY: DUPAGE  
PROJECT: JOB NO.: R-91-031-01  
STATION 910+62.36 TO STATION 912+32.73  
SCALE: 1"=40' SHEET 2 OF 2

BUREAU OF LAND ACQUISITION  
201 WEST CENTER COURT  
SCHAUMBURG, ILLINOIS 60196

ILLINOIS ROUTE 53 SECTION: DUPAGE COUNTY JOB NO.: R-91-031-01 RECORDING: RECORDED ON

REVISION DATE: 05/21/09 REVISION PER IDOT REVIEW MADE BY JM

FILE NAME =	USER NAME = paciechal	DESIGNED -	REVISED -	STATE OF ILLINOIS DEPARTMENT OF TRANSPORTATION	PLAT OF HIGHWAYS (FOR INFORMATION ONLY) 35540 OSAGE DRIVE, GLEN ELLYN (LOCATION NO. 2)	F.A. RTE.	SECTION	COUNTY	TOTAL SHEETS	SHEET NO.
ct:\pwwork\pawidat\paciechal\d270297\sh	plan.dgn	DRAWN -	REVISED -			VAR	2011-044-DM	VARIOUS	22	17
PLOT SCALE = 20.0000 / in.	CHECKED -	REVISED -	CONTRACT NO. 60P53			ILLINOIS FED. AID PROJECT				
PLOT DATE = 6/29/2011	DATE -	REVISED -	SCALE: NTS			SHEET NO. 2 OF 5 SHEETS	STA. TO STA.			

SECTION 11, T 43 N, R 10 E

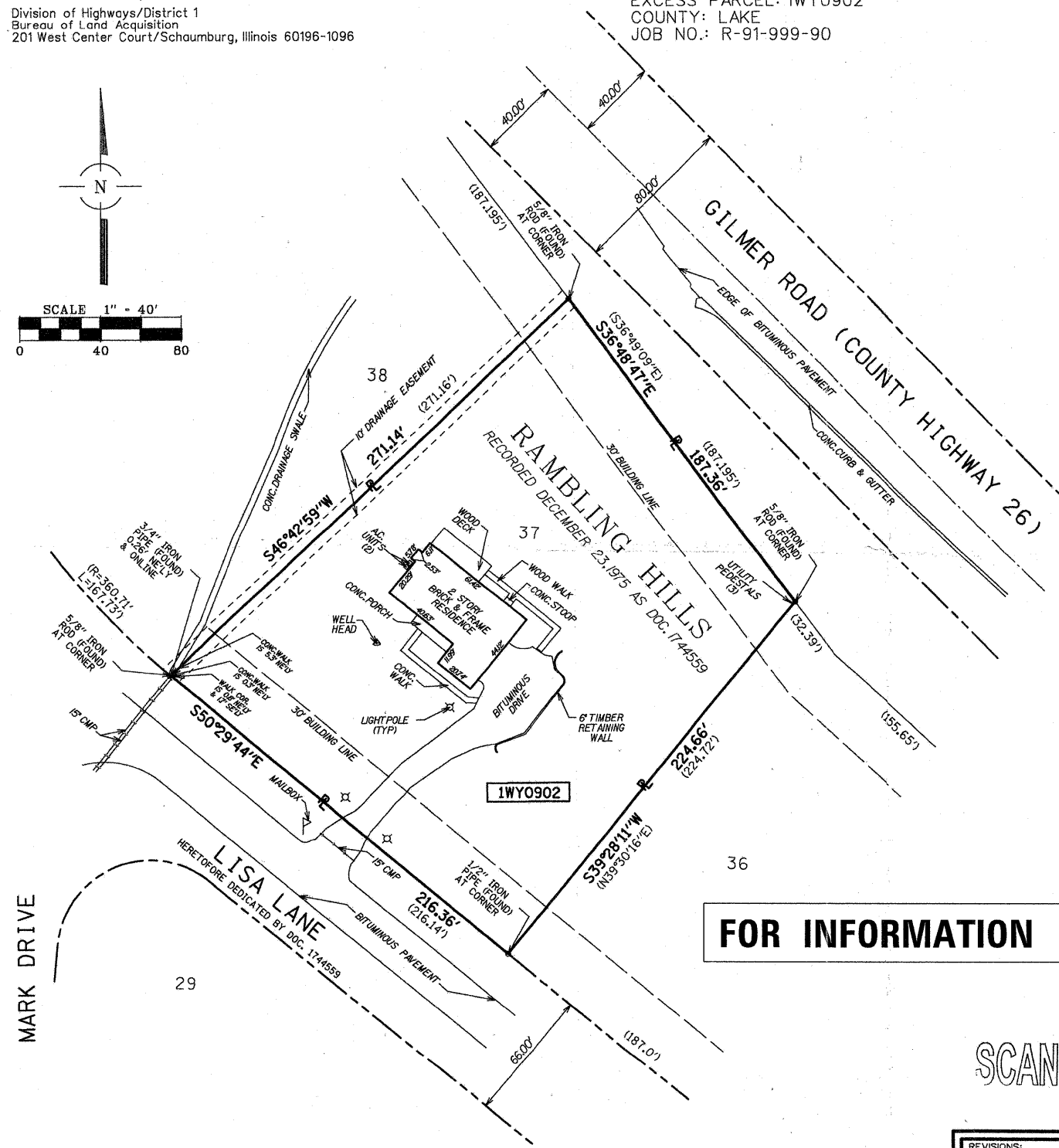
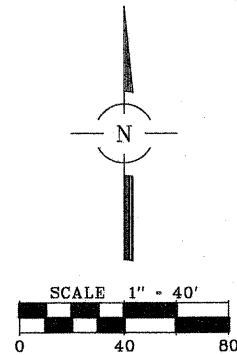
# EXCESS RIGHT OF WAY PLAT

Illinois Department of Transportation

Division of Highways/District 1  
Bureau of Land Acquisition  
201 West Center Court/Schaumburg, Illinois 60196-1096

ROUTE: F.A. ROUTE 61 (FAP 432)  
EXCESS PARCEL: 1WY0902  
COUNTY: LAKE  
JOB NO.: R-91-999-90

NOTE:  
THE BASIS OF BEARINGS IS  
THE SOUTHWESTERLY LINE OF  
LOT 37 BASED ON THE RECORD  
SUBDIVISION FOR RAMBLING  
HILLS RECORDED 12/23/1975  
AS DOC. 1744559



### LEGEND

- RESET PIPE OR ROD TO ORIGINAL POSITION
- T1(B1) THESE STAKES REFERENCE FOUND OR SET MONUMENTATION. SET 5/8 INCH IRON ROD TO TIE FOUND IRON STAKE IDENTIFIED BY COLORED PLASTIC CAP BEARING SURVEYORS REGISTRATION NUMBER.
- T1 DENOTES TIE POINT NO. 1. SET IRON ROD FLUSH WITH GROUND SURFACE
- (B1) DENOTES TIE POINT NO. 1. SET IRON ROD 20" BELOW GROUND SURFACE
- DIVISION OF HIGHWAYS RIGHT OF WAY SURVEY MARKER FOUND.
- STAKING OF PROPOSED RIGHT OF WAY. SET DIVISION OF HIGHWAYS SURVEY MARKER TO MONUMENT THE POSITION SHOWN, IDENTIFIED BY INSCRIPTION DATA AND SURVEYORS REGISTRATION NUMBER.
- PERMANENT SURVEY MARKER, I.D.O.T. STANDARD 2135 (TO BE SET BY OTHERS)
- PROPOSED RIGHT OF WAY LINE
- PROPOSED EASEMENT
- - - EXISTING RIGHT OF WAY LINE
- - - CENTERLINE
- - - PLATTED LOT LINES
- - - PROPERTY (DEED) LINE
- - - APPARENT PROPERTY LINE
- - - SECTION LINE
- 129.32 MEASURED DIMENSION
- 129.32 (COMP) COMPUTED DIMENSION
- (129.32) RECORDED DIMENSION
- + CUT CROSS FOUND OR SET
- IRON PIPE OR IRON ROD FOUND

PARCEL NO.	OWNER	EXCESS AREA ACRES
1WY0902	IL. DEPARTMENT OF TRANSPORTATION	1.137 ACRES (OR 49,524 SF)

STATE OF ILLINOIS  
COUNTY OF COOK } SS  
WE, SPACECO, INC., AN ILLINOIS PROFESSIONAL DESIGN FIRM, NUMBER 184-001157, DO HEREBY DECLARE THAT THIS MAP OR PLAT AND THE SURVEY ON WHICH IT IS BASED IS A TRUE AND CORRECT REPRESENTATION OF SAID SURVEY.

ALL DIMENSIONS ARE IN FEET AND DECIMAL PARTS THEREOF.  
NO DISTANCES OR ANGLES SHOWN HEREON MAY BE ASSUMED BY SCALING.  
THIS PROFESSIONAL SERVICE CONFORMS TO THE CURRENT ILLINOIS MINIMUM STANDARDS OF PRACTICE APPLICABLE TO BOUNDARY SURVEYS.

GIVEN UNDER OUR HAND AND SEAL THIS 23<sup>RD</sup> DAY OF AUGUST 2007 IN ROSEMONT, ILLINOIS.

*Rebecca Y. Popeck*  
REBECCA Y. POPECK, I.P.C.S. No. 035-3642

LICENSE EXPIRES: 11-30-2009  
(VALID ONLY IF EMBOSSED SEAL AFFIXED)

COMPARE ALL DIMENSIONS BEFORE BUILDING AND REPORT ANY DISCREPANCIES AT ONCE. REFER TO DEED OR TITLE POLICY FOR BUILDING LINES AND EASEMENTS.



**FOR INFORMATION ONLY**

SCANNED

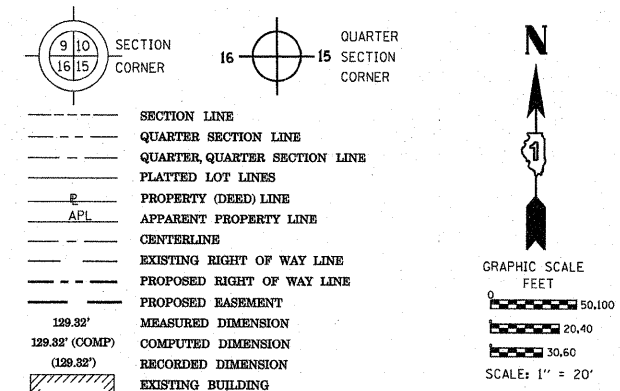
REVISIONS:	CONSULTING ENGINEERS	DATE:
	SITE DEVELOPMENT ENGINEERS	08/22/2007
	LAND SURVEYORS	JOB NO:
		5276.07
		FILENAME:
		5276.07EXCESSROW

9575 W. Higgins Road, Suite 700,  
Rosemont, Illinois 60018  
Phone: (847) 696-4060 Fax: (847) 696-4065

PART OF THE NE 14 OF SECTION 22, TWP. 41 N., R.8 E. OF THE 3RD. P.M., IN KANE COUNTY, ILLINOIS.

PARCEL NUMBER	OWNER	TOTAL HOLDINGS ACRES	PART TAKEN ACRES	AREA IN EXISTING R.O.W. ACRES	REMAINDER AREA ACRES	EASEMENT ACRES	AREA SQUARE FEET	EASEMENT PURPOSE	PERMANENT INDEX NUMBER	PROPERTY ACQUIRED BY
IH60035	RICARDO DELEON AND ELIZABETH DELEON	0.256	0.029	N/A	0.227	N/A	N/A	N/A	06-22-255-014	
IH60036	COMMONWEALTH EDISON CO.	0.242	N/A	N/A	0.242	PE-0.041	N/A	PERM.	06-22-255-020	
IH60037	DENNIS W. BACKEY & PAMELA A. BACKEY	0.139	0.139	N/A	0.000	N/A	N/A	N/A	06-22-277-009	
IH60038	GREG KROGMAN	0.101	0.101	N/A	0.000	N/A	N/A	N/A	06-22-282-003	

LEGEND



Bearings are referenced to the Illinois Coordinate System, NAD83, East Zone, as provided by the Illinois Department of Transportation.

- IRON PIPE OR ROD FOUND
- ⊕ "MAG" NAIL SET
- + CUT CROSS FOUND OR SET
- 5/8" REBAR SET
- T1 THESE STAKES REFERENCE FOUND OR SET MONUMENTATION. SET 5/8 INCH IRON ROD FLUSH WITH GROUND TO TIE FOUND IRON STAKE IDENTIFIED BY COLORED PLASTIC CAP BEARING SURVEYORS REGISTRATION NUMBER.
- T2
- T3
- BT1 THESE STAKES IN CULTIVATED AREAS, REFERENCE FOUND OR SET MONUMENTATION. BURIED 5/8 INCH IRON ROD 20 INCHES BELOW GROUND TO TIE FOUND IRON STAKE, IDENTIFIED BY COLORED PLASTIC CAP BEARING SURVEYORS REGISTRATION NUMBER.
- BT2
- BT3
- STAKING OF PROPOSED RIGHT OF WAY. SET DIVISION OF HIGHWAYS SURVEY MARKER TO MONUMENT THE POSITION SHOWN, IDENTIFIED BY INSCRIPTION DATA AND SURVEYORS REGISTRATION NUMBER.
- M STAKING OF PROPOSED RIGHT OF WAY IN CULTIVATED AREAS. BURIED 5/8 INCH METAL ROD 20 INCHES BELOW GROUND TO MARK FUTURE SURVEY MARKER POSITION IDENTIFIED BY COLORED PLASTIC CAP BEARING SURVEYORS REGISTRATION NUMBER.
- ⊙ PERMANENT SURVEY MARKER, I.D.O.T. STANDARD 2135 (TO BE SET BY OTHERS)
- RIGHT OF WAY STAKING PROPOSED TO BE SET

STATE OF ILLINOIS )  
 COUNTY OF )  
 THIS IS TO CERTIFY THAT I, RONALD F. HODGEN, AN ILLINOIS PROFESSIONAL LAND SURVEYOR, (WE, RUETTIGER, TONELLI & ASSOCIATES, AN ILLINOIS PROFESSIONAL DESIGN FIRM LAND SURVEYING CORPORATION, NUMBER 89,) HAVE SURVEYED THE PLAT OF HIGHWAYS SHOWN HEREON IN SECTION 22, TOWNSHIP 41 NORTH, RANGE 8 EAST OF THE THIRD PRINCIPAL MERIDIAN, KANE COUNTY, THAT THE SURVEY IS TRUE AND COMPLETE AS SHOWN TO THE BEST OF MY KNOWLEDGE AND BELIEF, THAT THE PLAT CORRECTLY REPRESENTS SAID SURVEY, THAT ALL MONUMENTS FOUND AND ESTABLISHED ARE OF PERMANENT QUALITY AND OCCUPY THE POSITIONS SHOWN THEREON AND THAT THE MONUMENTS ARE SUFFICIENT TO ENABLE THE SURVEY TO BE RETRACED, MADE FOR THE DEPARTMENT OF TRANSPORTATION, STATE OF ILLINOIS.

DATED AT \_\_\_\_\_, ILLINOIS THIS \_\_\_\_\_ DAY OF \_\_\_\_\_ 20\_\_ A.D.

ILLINOIS PROFESSIONAL LAND SURVEYOR NO. 2630  
 LICENSE EXPIRATION DATE: 11-30-2010  
 THIS PROFESSIONAL SERVICE CONFORMS TO THE CURRENT ILLINOIS MINIMUM STANDARDS FOR A BOUNDARY SURVEY.

RUETTIGER, TONELLI & ASSOCIATES, INC.  
 Land Surveyors/Engineers/Planners/Landscape Architects/G.I.S. Consultants  
 2174 ONEIDA STREET  
 JOLIET, ILLINOIS 60435  
 PH. (815) 744-5600 FAX (815) 744-0101

PLAT OF HIGHWAYS  
 STATE OF ILLINOIS  
 DEPARTMENT OF TRANSPORTATION  
 FAP 345 (US 20)

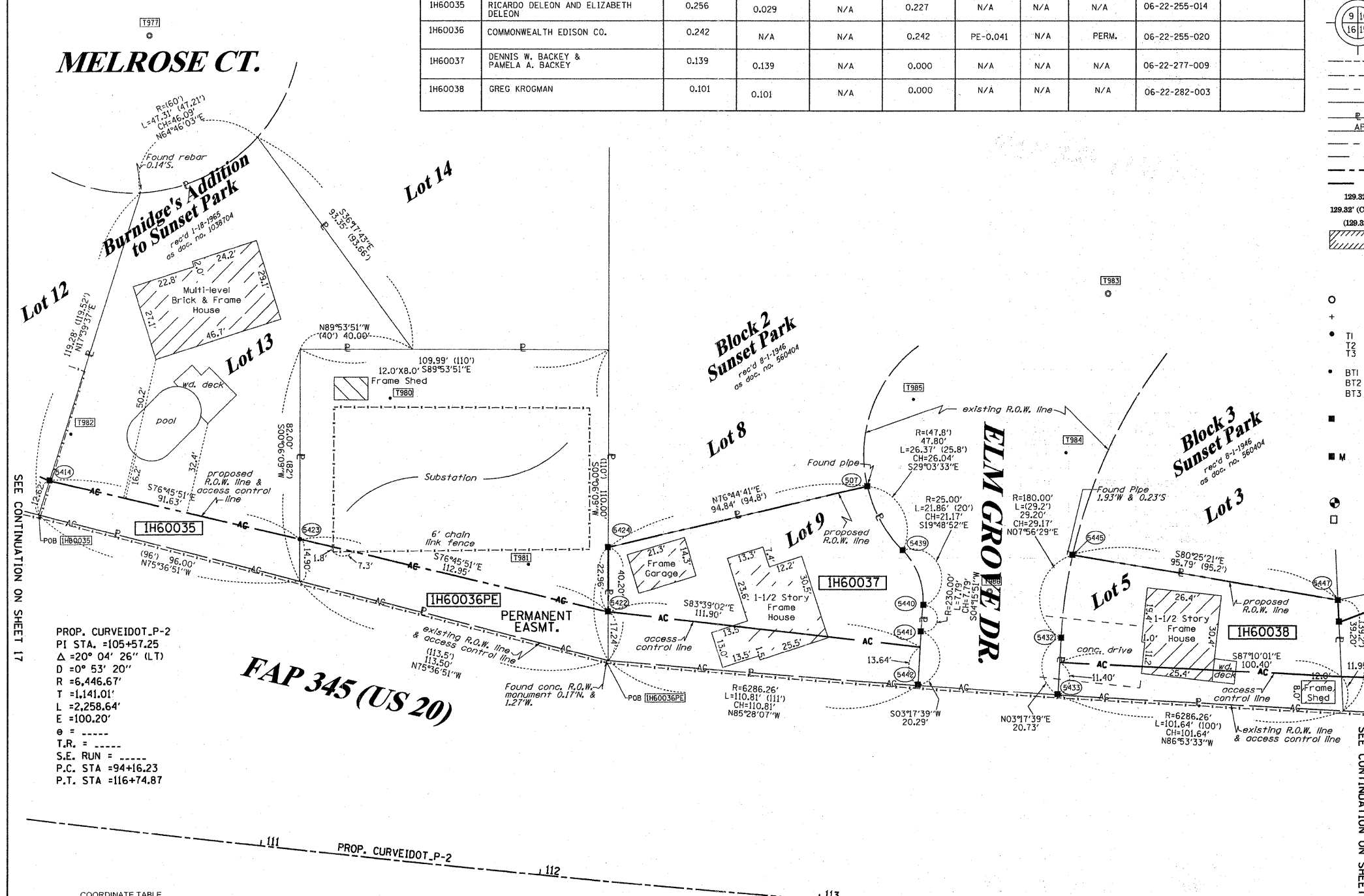
SECTION: COUNTY: KANE  
 PROJECT: JOB NO.: R-91-017-01  
 STATION 110+00 TO STATION 115+00  
 SCALE: 1" = 20' SHEET 18 OF 39

BUREAU OF LAND ACQUISITION  
 201 WEST CENTER COURT  
 SCHAUMBURG, ILLINOIS 60196

FOR INFORMATION ONLY

RECEIVED  
 NOV 04 2010  
 PLATS & LEGALS

REVISION DATE: 10-28-10  
 10-26-10  
 6-3-10  
 5-18-10  
 10-21-09  
 REVISION: REVISION AC LINE  
 ADD AC LINE  
 REVISION PARCEL TABLE  
 REVISION 0037 & 0038 TO FULL TAKES, REVISED US 20 CL PER IDOT  
 MISCEL. REVISIONS PER IDOT



PROP. CURVEIDOT\_P-2  
 PI STA. =105+57.25  
 Δ = 20° 04' 26" (LT)  
 D = 0° 53' 20"  
 R = 6,446.67'  
 T = 1,141.01'  
 L = 2,258.64'  
 E = 100.20'  
 e = -----  
 T.R. = -----  
 S.E. RUN = -----  
 P.C. STA = 94+16.23  
 P.T. STA = 116+74.87

COORDINATE TABLE

STATION	OFFSET	PT#	NORTH	EAST
113+05.59	-147.45	507	1950985.908	991473.127
110+09.22	-119.97	5414	1950980.038	991181.037
112+15.71	-95.00	5422	1950951.199	991380.774
111+01.91	-109.59	5423	1950977.059	991270.829
112+13.59	-117.87	5424	1950974.163	991380.815
113+79.88	-99.32	5432	1950942.593	991542.287
113+80.08	-78.59	5433	1950921.896	991541.096
113+20.27	-125.74	5439	1950973.149	991485.773
113+29.10	-106.43	5440	1950953.233	991482.949
113+29.10	-98.64	5441	1950945.466	991482.370
113+29.46	-78.35	5442	1950925.208	991481.204
113+82.00	-128.42	5445	1950971.481	991548.317
114+79.09	-118.11	5447	1950955.544	991640.771

ROUTE NAME: FAP 345 (US 20) SECTION: KANE COUNTY JOB NO.: R-91-017-01 RECORDING: RECORDED ON SHEET 1 OF 39 IS A COVER SHEET AND IS NOT RECORDED

FILE NAME	USER NAME	DESIGNED	REVISED	STATE OF ILLINOIS DEPARTMENT OF TRANSPORTATION	PLAT OF HIGHWAYS (FOR INFORMATION ONLY)	F.A. RTE.	SECTION	COUNTY	TOTAL SHEETS	SHEET NO.
ct:\pwork\p\dot\poc\echal\d0270297\sh	poc\echal	-	-	STATE OF ILLINOIS DEPARTMENT OF TRANSPORTATION	PLAT OF HIGHWAYS (FOR INFORMATION ONLY)	VAR	2011-044-DM	VARIOUS	22	19
		DRAWN	REVISED		568 ELM GROVE DRIVE, ELGIN (LOCATION NO. 4)					
		CHECKED	REVISED		SCALE: NTS					
		DATE	REVISED		SHEET NO. 4 OF 5 SHEETS					
					STA. TO STA.					
										ILLINOIS FED. AID PROJECT

PART OF THE NE 1/4 OF SECTION 22, TWP. 41 N., R.8 E. OF THE 3RD. P.M., IN KANE COUNTY, ILLINOIS.

PARCEL NUMBER	OWNER	TOTAL HOLDINGS ACRES	PART TAKEN ACRES	AREA IN EXISTING R.O.W. ACRES	REMAINDER AREA ACRES	EASEMENT ACRES	AREA SQUARE FEET	EASEMENT PURPOSE	PERMANENT INDEX NUMBER	PROPERTY ACQUIRED BY
IH60039	JUAN M. MEDINA, A SINGLE PERSON & ALMA R. TOPETE, A SINGLE PERSON AS TENANTS IN COMMON	0.132	0.132	N/A	0.000	N/A	N/A	N/A	06-22-282-005	
IH60040	CRAIG CAMPBELL AND LORRIE C. CAMPBELL	0.161	0.161	N/A	0.000	N/A	N/A	N/A	06-22-283-012	
I6H0041	F. JAY BERO AND VANESSA C. BERO	0.129	0.016	N/A	0.113	N/A	N/A	N/A	06-22-283-011	
IH60042	REGINALD L. RICHARDSON AND JAN R. DELROSARIO	0.135	0.012	N/A	0.123	N/A	N/A	N/A	06-22-283-003	

**LEGEND**

- SECTION CORNER
- QUARTER CORNER
- SECTION LINE
- QUARTER SECTION LINE
- QUARTER, QUARTER SECTION LINE
- PLATTED LOT LINES
- PROPERTY (DEED) LINE
- APPARENT PROPERTY LINE
- CENTERLINE
- EXISTING RIGHT OF WAY LINE
- PROPOSED RIGHT OF WAY LINE
- PROPOSED EASEMENT
- MEASURED DIMENSION
- COMPUTED DIMENSION
- RECORDED DIMENSION
- EXISTING BUILDING

Bearings are referenced to the Illinois Coordinate System, NAD83, East Zone, as provided by the Illinois Department of Transportation.

IRON PIPE OR ROD FOUND  
CUT CROSS FOUND OR SET

THESE STAKES REFERENCE FOUND OR SET MONUMENTATION. SET 5/8 INCH IRON ROD FLUSH WITH GROUND TO TIE FOUND IRON STAKE IDENTIFIED BY COLORED PLASTIC CAP BEARING SURVEYORS REGISTRATION NUMBER.

THESE STAKES, IN CULTIVATED AREAS, REFERENCE FOUND OR SET MONUMENTATION. BURIED 5/8 INCH IRON ROD 20 INCHES BELOW GROUND TO MARK FUTURE SURVEY MARKER POSITION IDENTIFIED BY COLORED PLASTIC CAP BEARING SURVEYORS REGISTRATION NUMBER.

STAKING OF PROPOSED RIGHT OF WAY. SET DIVISION OF HIGHWAYS SURVEY MARKER TO MONUMENT THE POSITION SHOWN, IDENTIFIED BY INSCRIPTION DATA AND SURVEYORS REGISTRATION NUMBER.

STAKING OF PROPOSED RIGHT OF WAY IN CULTIVATED AREAS. BURIED 5/8 INCH METAL ROD 20 INCHES BELOW GROUND TO MARK FUTURE SURVEY MARKER POSITION IDENTIFIED BY COLORED PLASTIC CAP BEARING SURVEYORS REGISTRATION NUMBER.

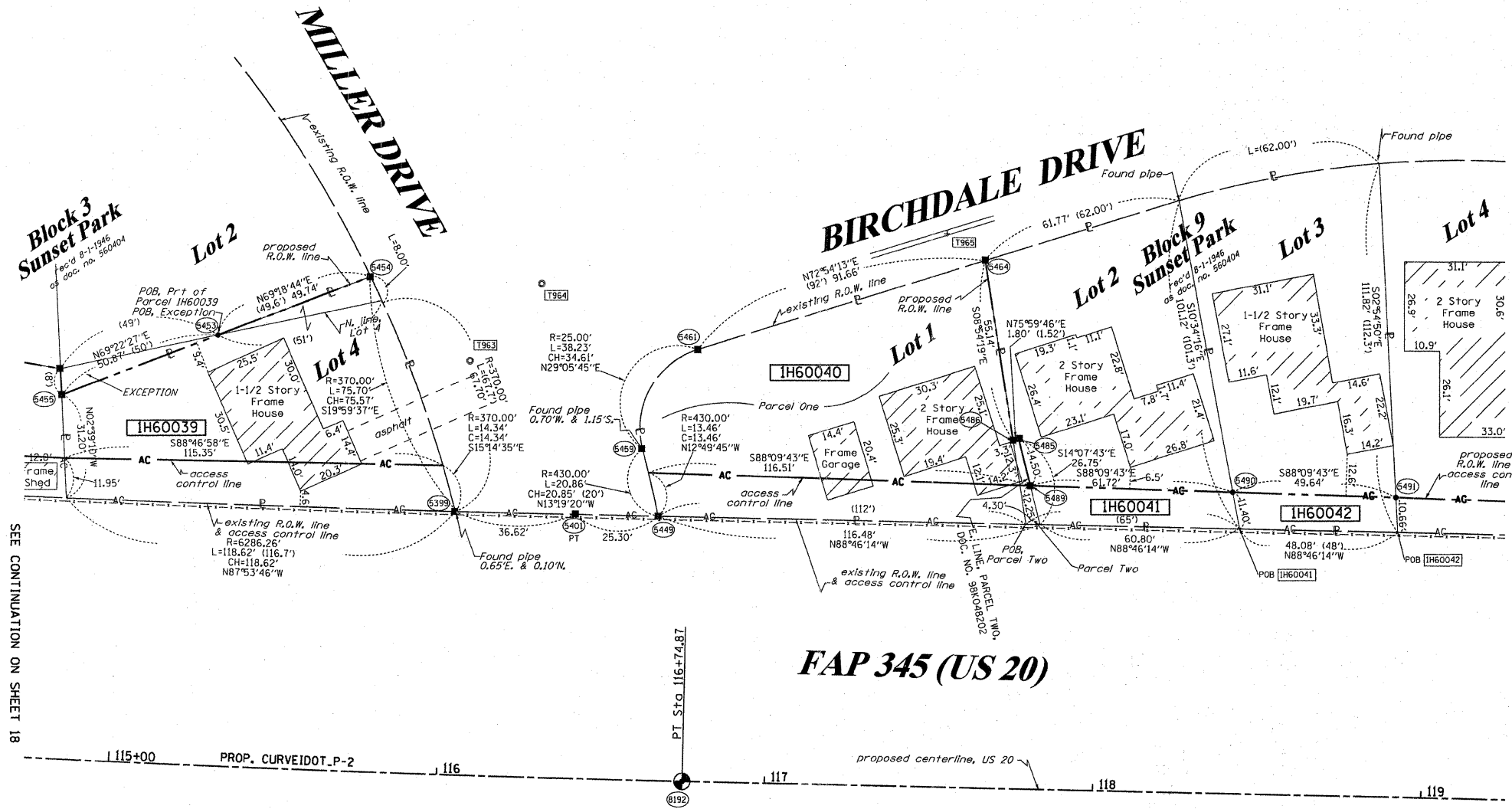
PERMANENT SURVEY MARKER, I.D.O.T. STANDARD 2135 (TO BE SET BY OTHERS)

RIGHT OF WAY STAKING PROPOSED TO BE SET

STATE OF ILLINOIS )  
COUNTY OF )  
THIS IS TO CERTIFY THAT I, RONALD F. HODGEN, AN ILLINOIS PROFESSIONAL LAND SURVEYOR, (WE, RUETTIGER, TONELLI & ASSOCIATES, AN ILLINOIS PROFESSIONAL DESIGN FIRM LAND SURVEYING CORPORATION, NUMBER 89,) HAVE SURVEYED THE PLAT OF HIGHWAYS SHOWN HEREON IN SECTION 22, TOWNSHIP 41 NORTH, RANGE 8 EAST OF THE THIRD PRINCIPAL MERIDIAN, KANE COUNTY, THAT THE SURVEY IS TRUE AND COMPLETE AS SHOWN TO THE BEST OF MY KNOWLEDGE AND BELIEF, THAT THE PLAT CORRECTLY REPRESENTS SAID SURVEY, THAT ALL MONUMENTS FOUND AND ESTABLISHED ARE OF PERMANENT QUALITY AND OCCUPY THE POSITIONS SHOWN THEREON AND THAT THE MONUMENTS ARE SUFFICIENT TO ENABLE THE SURVEY TO BE RETRACED, MADE FOR THE DEPARTMENT OF TRANSPORTATION, STATE OF ILLINOIS.

DATED AT \_\_\_\_\_, ILLINOIS THIS \_\_\_\_\_ DAY OF \_\_\_\_\_, 20\_\_ A.D.

ILLINOIS PROFESSIONAL LAND SURVEYOR NO. 2630  
LICENSE EXPIRATION DATE: 11-30-2010  
THIS PROFESSIONAL SERVICE CONFORMS TO THE CURRENT ILLINOIS MINIMUM STANDARDS FOR A BOUNDARY SURVEY.



SEE CONTINUATION ON SHEET 18

SEE CONTINUATION ON SHEET 20

FAP 345 (US 20)

PROP. CURVEIDOT\_P-2  
PI STA. =105+57.25  
Δ =20° 04' 26" (LT)  
D =0° 53' 20"  
R =6,446.67'  
T =1,141.01'  
L =2,258.64'  
E =100.20'  
e = ----  
T.R. = ----  
S.E. RUN = ----  
P.C. STA =94+16.23  
P.T. STA =116+74.87

COORDINATE TABLE

STATION	OFFSET	PT#	NORTH	EAST
116+03.07	-79.71	5399	1950912.031	991761.124
116+40.16	-79.91	5401	1950911.142	991797.736
116+65.77	-80.00	5449	1950910.599	991823.030
115+27.47	-130.33	5453	1950965.473	991888.755
115+74.27	-149.78	5454	1950983.045	991735.288
114+79.89	-110.15	5455	1950947.552	991641.142
116+60.42	-100.17	5459	1950930.891	991818.225
116+76.83	-130.79	5461	1950961.136	991835.056
117+63.84	-159.61	5464	1950988.082	991922.867
117+75.28	-105.80	5485	1950934.040	991932.954
117+73.54	-105.32	5486	1950933.604	991931.203
117+79.12	-91.82	5489	1950919.981	991936.493
118+40.84	-91.16	5490	1950918.002	991998.178
118+90.48	-90.64	5491	1950916.409	992047.797
116+74.87	0.00	8192	1950830.420	991830.293

**FOR INFORMATION ONLY**

RECEIVED  
NOV 04 2010  
PLATS & LEGALS

REVISION DATE: 10-28-10  
10-26-10  
6-3-10  
5-10-10  
10-21-09

REVISION: REVISE AC LINE  
ADD AC LINE  
REVISE PARCEL TABLE  
TOTAL TAKE ON 0039 & 0040, REVISE US 20 CL  
MISCEL. REVISIONS PER IDOT

MADE BY: TLW

ROUTE NAME: FAP 345 (US 20) SECTION: KANE COUNTY JOB NO.: R-91-017-01 RECORDING: RECORDED ON SHEET 1 OF 39 IS A COVER SHEET AND IS NOT RECORDED

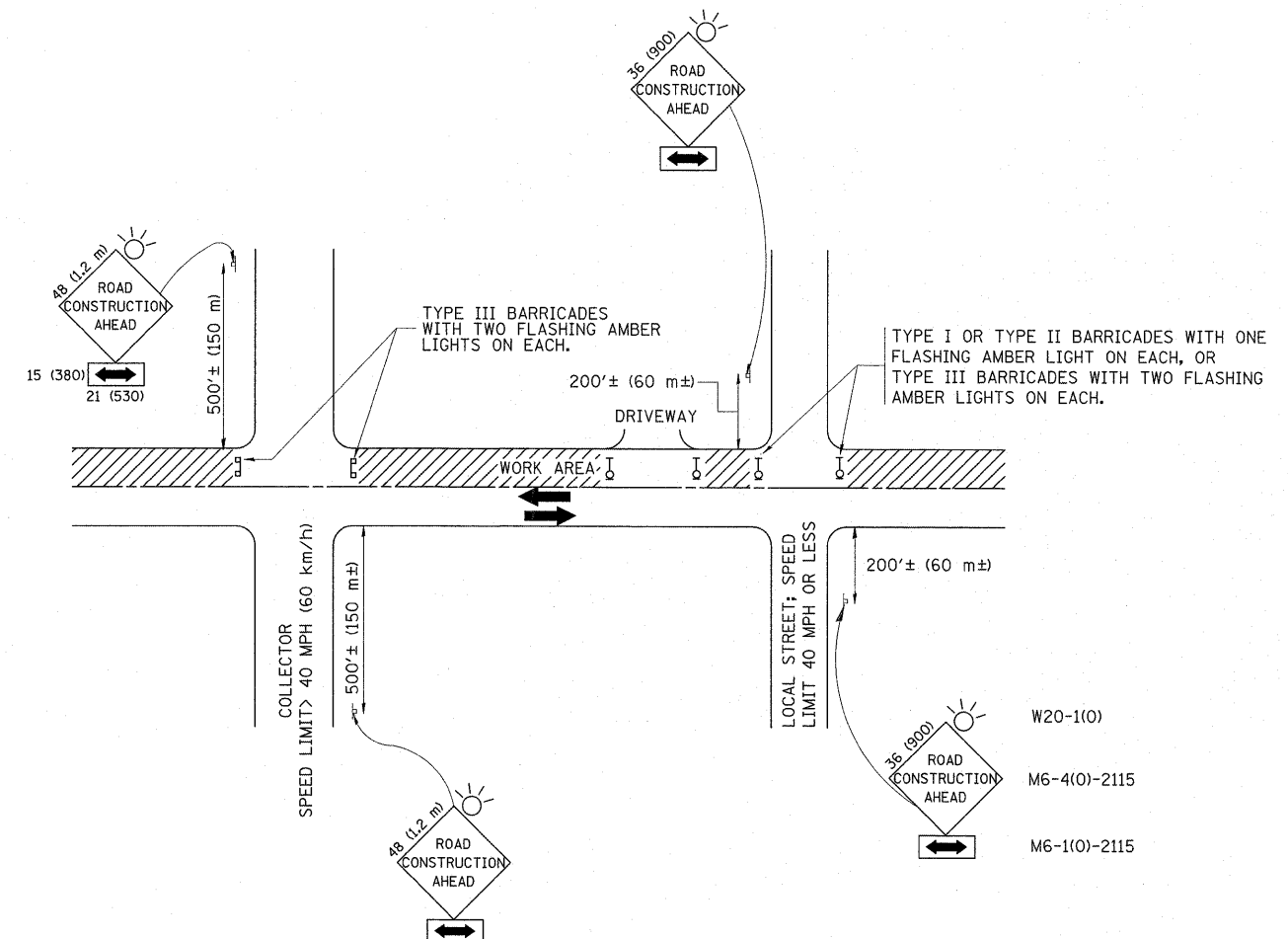
FILE NAME =	USER NAME = pociechal	DESIGNED -	REVISED -	STATE OF ILLINOIS DEPARTMENT OF TRANSPORTATION	PLAT OF HIGHWAYS (FOR INFORMATION ONLY) 1113 BIRCHDALE DRIVE, ELGIN (LOCATION NO. 5)	F.A. RTE.	SECTION	COUNTY	TOTAL SHEETS	SHEET NO.
cr:\p\work\p\dot\pociechal\d0270297\sh	plandgn	DRAWN -	REVISED -			VAR	2011-044-DM	VARIOUS	22	20
PLOT SCALE = 20.0000' / in.	CHECKED -	REVISED -	CONTRACT NO. 60P53							
PLOT DATE = 6/29/2011	DATE -	REVISED -	ILLINOIS FED. AID PROJECT							

RUETTIGER, TONELLI & ASSOCIATES, INC.  
Land Surveyors/Engineers/Planners/Landscape Architects/G.I.S. Consultants  
2174 ONEIDA STREET  
JOLIET, ILLINOIS 60438  
PH: (815) 744-6600 FAX: (815) 744-0101

**PLAT OF HIGHWAYS**  
STATE OF ILLINOIS  
DEPARTMENT OF TRANSPORTATION  
FAP 345 (US 20)

SECTION: COUNTY: KANE  
PROJECT JOB NO.: R-91-017-01  
STATION 115+00 TO STATION 119+00  
SCALE: 1" = 20' SHEET 19 OF 39

BUREAU OF LAND ACQUISITION  
201 WEST CENTER COURT  
SCHAUMBURG, ILLINOIS 60196



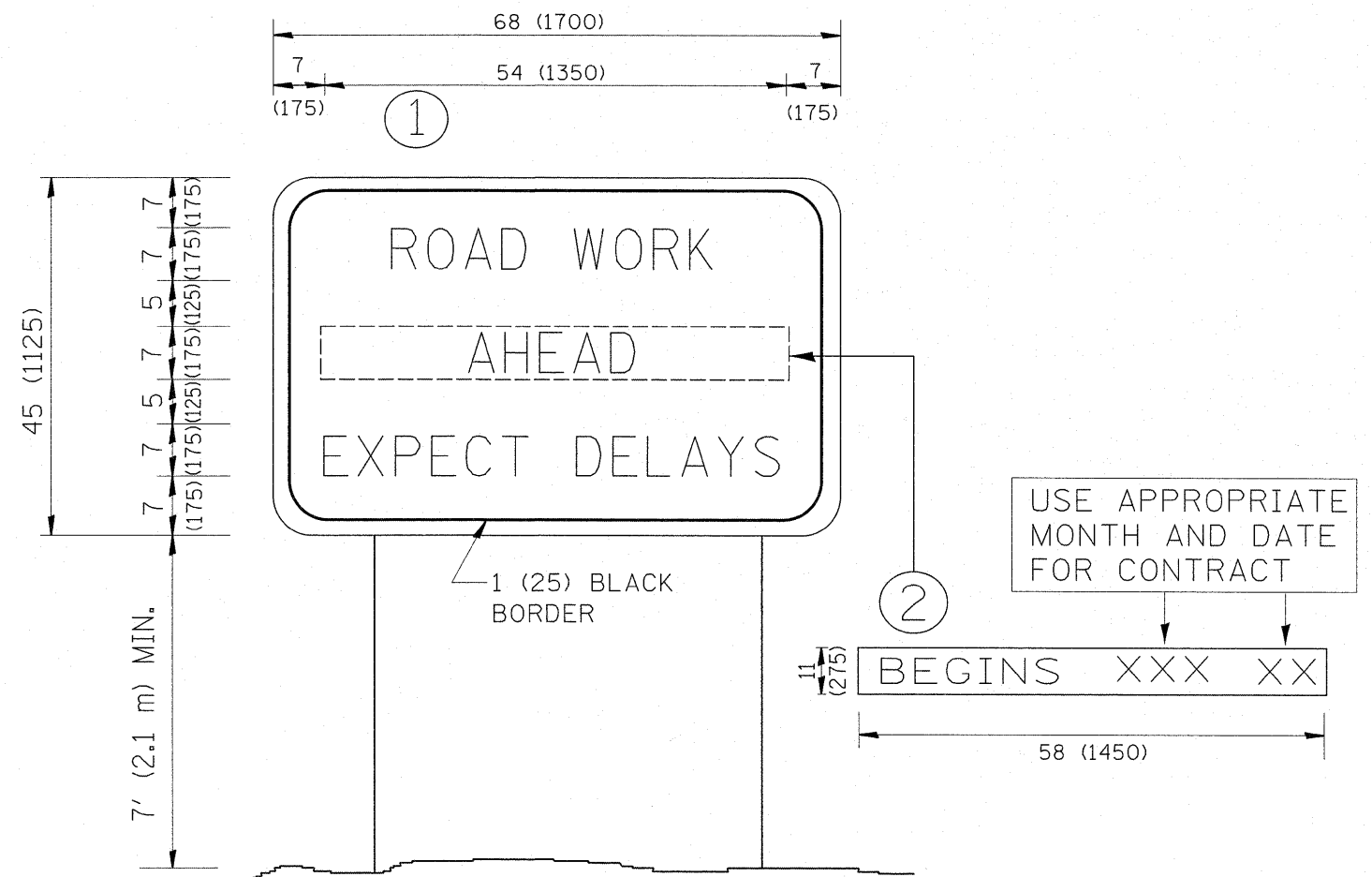
TRAFFIC CONTROL AND PROTECTION FOR SIDE ROADS, INTERSECTIONS, AND DRIVEWAYS

NOTES:

- A. FOR NO LANE RESTRICTION ON THE SIDE ROAD OR DRIVEWAYS
- SIDE ROAD WITH A SPEED LIMIT OF 40 MPH (60 km/h) OR LESS AS SHOWN ON THE DRAWING AND AS DIRECTED BY THE ENGINEER:
    - ONE ROAD CONSTRUCTION AHEAD SIGN 36 x 36 (900x900) WITH A FLASHER AND FLAG MOUNTED ON IT APPROXIMATELY 200' (60 m) IN ADVANCE OF THE MAIN ROUTE.
    - THE CLOSED PORTION OF THE MAIN ROUTE SHALL BE PROTECTED BY BLOCKING WITH TYPE I, TYPE II OR TYPE III BARRICADES, 1/3 OF THE CROSS SECTION OF THE CLOSED PORTION.
  - SIDE ROAD WITH A SPEED LIMIT GREATER THAN 40 MPH (60 km/h) AS SHOWN ON THE DRAWING AND AS DIRECTED BY THE ENGINEER:
    - ONE ROAD CONSTRUCTION AHEAD SIGN 48 x 48 (1.2 m x 1.2 m) WITH A FLASHER MOUNTED ON IT APPROXIMATELY 500' (150 m) IN ADVANCE OF THE MAIN ROUTE.
    - THE CLOSED PORTION OF THE MAIN ROUTE SHALL BE PROTECTED BY BLOCKING WITH TYPE III BARRICADES, 1/2 OF THE CROSS SECTION OF THE CLOSED PORTION.
3. WHEN THE SIDE ROAD LIES BETWEEN THE BEGINNING OF THE MAINLINE SIGNING AND THE WORK ZONE, A SINGLE HEADED ARROW (M6-1) SHALL BE USED IN LIEU OF THE DOUBLE HEADED ARROW (M6-4).
- B. FOR A LANE CLOSURE ON A SIDE ROAD OR DRIVEWAY:
- USE APPLICABLE PORTIONS OF THE TYPICAL APPLICATION OF TRAFFIC CONTROL DEVICES (STD. 701501, STD. 701606 OR THE APPROPRIATE STANDARD). THE SPACING OF SIGNS AND BARRICADES SHALL BE ADJUSTED FOR FIELD CONDITIONS AS DIRECTED BY THE ENGINEER. THE DIRECTIONAL ARROW SHALL BE COVERED OR REMOVED WHEN NO LONGER CONSISTENT WITH THE SIDE ROAD LANE CLOSURE.
- C. ADVANCE WARNING SIGNS ARE TO BE OMITTED ON DRIVEWAY UNLESS OTHERWISE NOTED.
- D. THE TRAFFIC CONTROL AND PROTECTION FOR SIDE ROADS, INTERSECTIONS, AND DRIVEWAYS SHALL BE INCIDENTAL TO THE COST OF SPECIFIED TRAFFIC CONTROL STANDARDS OR ITEMS.

All dimensions are in millimeters (inches) unless otherwise shown.

FILE NAME =	USER NAME = pocsechal	DESIGNED - LHA	REVISED - J. OBERLE 10-18-95	<b>STATE OF ILLINOIS DEPARTMENT OF TRANSPORTATION</b>	<b>TRAFFIC CONTROL AND PROTECTION FOR SIDE ROADS, INTERSECTIONS, AND DRIVEWAYS</b>			F.A. RTE.	SECTION	COUNTY	TOTAL SHEETS	SHEET NO.	
cr:\pwork\pwork\pocsechal\0270297\1\1Std.dgn		DRAWN -	REVISED - A. HOUSEH 03-06-96		SCALE: NONE	SHEET NO. 1 OF 1 SHEETS	STA.	TO STA.	VAR	2011-044-DM	VARIOUS	22	21
		PLOT SCALE = 50.0000' / in.	REVISED - A. HOUSEH 10-15-96		TC-10			CONTRACT NO. 60P53					
		PLOT DATE = 6/29/2011	REVISED - T. RAMMACHER 01-06-00		FED. ROAD DIST. NO. 1 ILLINOIS FED. AID PROJECT								



**NOTES:**

1. USE BLACK LETTERING ON ORANGE BACKGROUND.
2. ERECT SIGNS IN ADVANCE OF THE LOCATION FOR THE "ROAD CONSTRUCTION AHEAD" SIGN AT LOCATIONS AS DIRECTED BY THE ENGINEER.
3. ERECT SIGN ① WITH INSTALLED PANEL ② ONE WEEK PRIOR TO THE START OF CONSTRUCTION.
4. REMOVE PANEL ② SOON AFTER THE START OF CONSTRUCTION.
5. SEE SPECIAL PROVISION FOR "TEMPORARY INFORMATION SIGNING" FOR ADDITIONAL INFORMATION.
6. ONE SIGN ASSEMBLY EQUALS 25.70 SQ. FT. (2.3 SQ. M.)
7. SHALL BE PAID FOR AS TEMPORARY INFORMATION SIGNING.

ALL DIMENSIONS ARE IN INCHES (MILLIMETERS) UNLESS OTHERWISE SHOWN.

FILE NAME =	USER NAME = pociechal	DESIGNED -	REVISED - R. MIRS 09-15-97
cr\pw\work\pwidot\pociechal\0278297\0278297.dgn		DRAWN -	REVISED - R. MIRS 12-11-97
	PLOT SCALE = 50.0000' / in.	CHECKED -	REVISED - T. RAMMACHER 02-02-99
	PLOT DATE = 6/29/2011	DATE -	REVISED - C. JUCIUS 01-31-07

**STATE OF ILLINOIS  
DEPARTMENT OF TRANSPORTATION**

**ARTERIAL ROAD  
INFORMATION SIGN**

SCALE: NONE SHEET NO. 1 OF 1 SHEETS STA. TO STA.

F.A. RTE.	SECTION	COUNTY	TOTAL SHEETS	SHEET NO.
VAR.	2011-044-DM	VARIOUS	22	22
TC-22			CONTRACT NO. 60P53	
FED. ROAD DIST. NO. 1 ILLINOIS FED. AID PROJECT				