

**INDEX OF SHEETS**

FOR INDEX OF SHEETS, SEE SHEET NO. 2

PROJECT LOCATED IN VILLAGE OF EAST HAZEL CREST

**DESIGN DESIGNATION**

PRINCIPAL ARTERIAL (PCC-20)

	ADT(2003)	DESIGN SPEED	POSTED SPEED
IL RTE. 1 (HALSTED ST.)	30,900	45 MPH	40 MPH

**STATE OF ILLINOIS**

**DEPARTMENT OF TRANSPORTATION**

**DIVISION OF HIGHWAYS**

**PLANS FOR PROPOSED BRIDGE**

**ILLINOIS ROUTE 1 (HALSTED STREET)**

**FAP ROUTE 876**

**SECTION 2001-001BR**

**OVER TRI-STATE TOLLWAY (I-80 / I-294)**

**IDOT STRUCTURE NO.: 016-0199**

**TOLLWAY STRUCTURE NO.: 115**

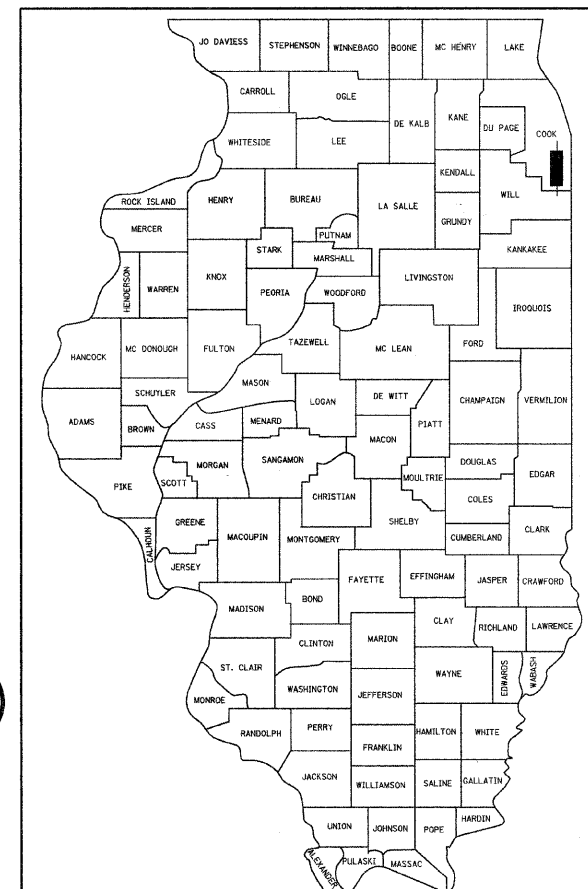
**BRIDGE SUPERSTRUCTURE REPLACEMENT**

**COOK COUNTY PROJECT: ACNHF-0876(076)**

**C-91-003-01**

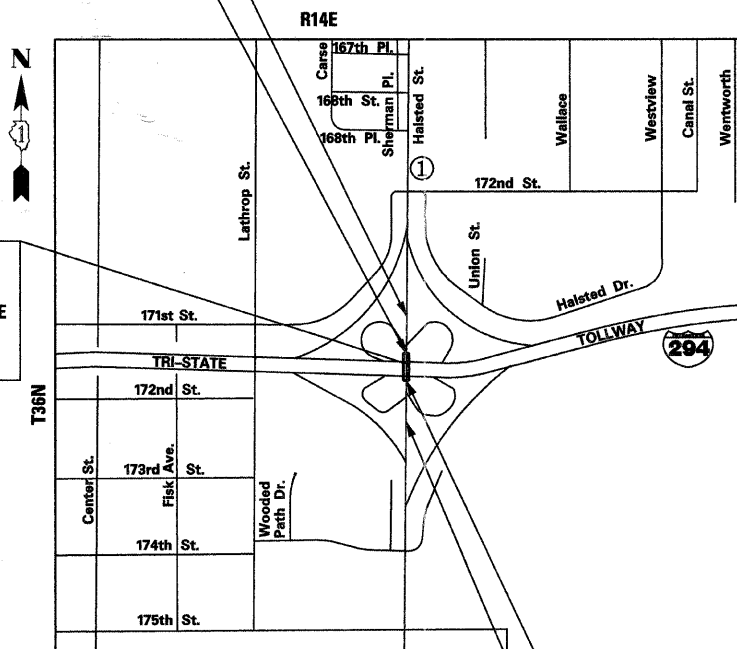
F.A.P. RTE.	SECTION	COUNTY	TOTAL SHEETS	SHEET NO.
876	T1-7	COOK	62	1

D-91-003-01

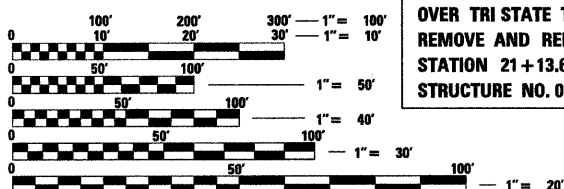


LOCATION OF SECTION INDICATED THUS: - ■ -

IL RTE. 1 (HALSTED STREET)  
IMPROVEMENT ENDS  
STATION 27 + 00.00  
IL RTE. 1 (HALSTED STREET)  
PROJECT ENDS  
STATION 22 + 64.05



IL RTE. 1 (HALSTED STREET) BRIDGE  
OVER TRI STATE TOLLWAY (I-80 / I-294)  
REMOVE AND REPLACE SUPERSTRUCTURE  
STATION 21 + 13.6  
STRUCTURE NO. 016-0199



FULL SIZE PLANS HAVE BEEN PREPARED USING STANDARD ENGINEERING SCALES. REDUCED SIZED PLANS WILL NOT CONFORM TO STANDARD SCALES. IN MAKING MEASUREMENTS ON REDUCED PLANS, THE ABOVE SCALES MAY BE USED.

J.U.L.I.E.  
JOINT UTILITY LOCATION INFORMATION FOR EXCAVATION  
1-800-892-0123 OR 811

PROJECT ENGINEER: J. REID MORELAND (847) 705-4594  
PROJECT MANAGER: SERIN KELLER (847) 705-4556  
TOWNSHIP: THORNTON  
CONTRACT NO. 62099

MAP SCALE: NO SCALE  
PROJECT LENGTH = 301.02 FEET

IL RTE. 1 (HALSTED STREET)  
PROJECT BEGINS  
STATION 19 + 63.03  
IL RTE. 1 (HALSTED STREET)  
IMPROVEMENT BEGINS  
STATION 15 + 30.00



ROBERT P. ISRAEL, P.E.  
IL LICENSED PROFESSIONAL NO. 062-044817  
License Expires on Nov. 30, 2011

Date: \_\_\_\_\_ For Drawings \_\_\_\_\_ thru \_\_\_\_\_  
Date: \_\_\_\_\_ For Drawings \_\_\_\_\_ thru \_\_\_\_\_



ROBERT A. LEE, S.E.  
IL LICENSED STRUCTURAL NO. 081-005246  
License Expires on Nov. 30, 2012

Date: \_\_\_\_\_ For Drawings \_\_\_\_\_ thru \_\_\_\_\_  
Date: \_\_\_\_\_ For Drawings \_\_\_\_\_ thru \_\_\_\_\_



MOUSSA A. ISSA, S.E.  
IL LICENSED STRUCTURAL NO. 081-005738  
License Expires on Nov. 30, 2012

Date: \_\_\_\_\_ For Drawings \_\_\_\_\_ thru \_\_\_\_\_

STATE OF ILLINOIS  
DEPARTMENT OF TRANSPORTATION  
DIVISION OF HIGHWAYS

SUBMITTED June 22, 2011

Diana M. O'Keefe  
DEPUTY DIRECTOR OF HIGHWAYS, REGION ENGINEER

August 19, 2011  
Scott E. Stitt, P.E./a  
ENGINEER OF DESIGN AND ENVIRONMENT

August 19, 2011  
Christine M. Reed/a  
DIRECTOR OF HIGHWAYS, CHIEF ENGINEER

**PRINTED BY THE AUTHORITY  
OF THE STATE OF ILLINOIS**

