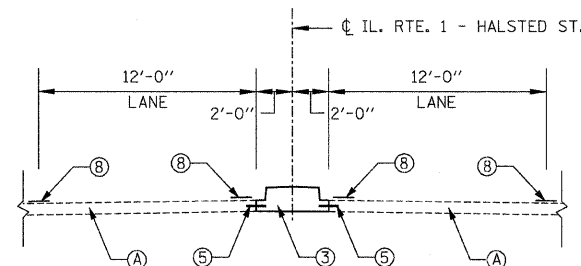


**EXISTING TYPICAL SECTION
IL ROUTE 1**

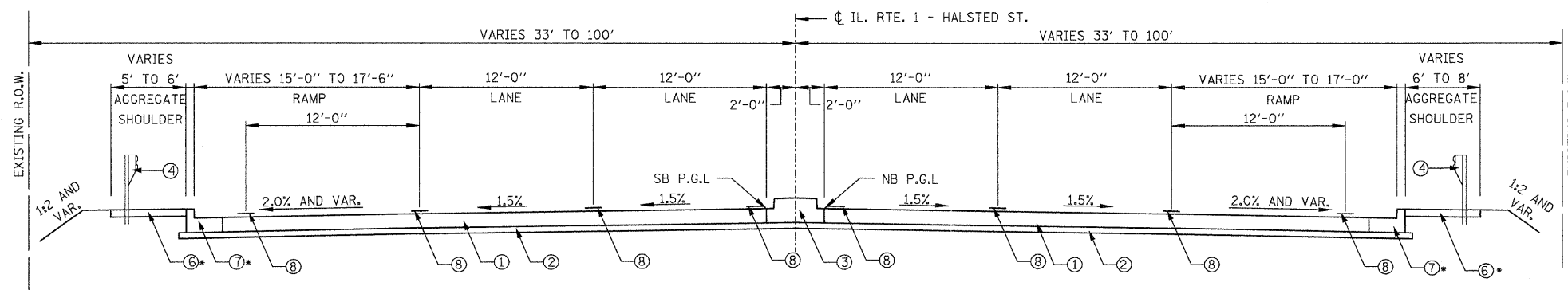
STA 19+62.85 TO STA 19+68.85
STA 22+58.35 TO STA 22+64.35

* CONCRETE MEDIAN REMOVAL
STA 15+30.00 TO STA 19+68.85 AND
STA 22+58.35 TO STA 27+00.00



**PROPOSED TYPICAL SECTION
IL ROUTE 1**

STA 15+30.00 TO STA 19+62.85
STA 22+64.35 TO STA 27+00.00



**PROPOSED TYPICAL SECTION
IL ROUTE 1**

STA 19+62.85 TO STA 19+68.85
STA 22+58.35 TO STA 22+64.35

* SEE PLANS FOR LOCATION

EXISTING LEGEND:

- (A) EXISTING PCC PAVEMENT
- (B) EXISTING CONCRETE MEDIAN
- (C) EXISTING COMBINATION CURB AND GUTTER
- (D) EXISTING GUARDRAIL



PROPOSED LEGEND:

- (1) PROPOSED BRIDGE APPROACH PAVEMENT CONNECTOR (PCC)
- (2) PROPOSED SUB-BASE GRANULAR MATERIAL, TYPE B 4"
- (3) PROPOSED CONCRETE MEDIAN, TYPE SB-6.06
- (4) PROPOSED STEEL PLATE BEAM GUARD RAIL, TYPE A
- (5) DOWEL BARS AT 24" C-C
- (6) PROPOSED AGGREGATE SHOULDERS, TYPE B 6"
- (7) PROPOSED COMBINATION CONCRETE CURB AND GUTTER, TYPE M-2.24
- (8) PROPOSED PAVEMENT MARKING

NOTES:

1. BRIDGE AND BRIDGE APPROACH SLABS OMISSION STA 19+68.85 TO STA 22+58.35.
2. AGGREGATE SHOULDER SHALL BE USED WHERE PROPOSED STEEL PLATE BEAM GUARDRAIL IS LOCATED. HMA SHOULDER SHALL BE USED BETWEEN BRIDGE APPROACH SLAB AND PARAPET.

TEMPORARY PAVEMENT NOTE:

IF CONTRACTOR CHOOSES TO USE CONCRETE THE THICKNESS WILL BE 10"

HOT-MIX ASPHALT MIXTURE REQUIREMENTS

ITEM	VOIDS	THICKNESS
HMA SHOULDERS, 6" (HMA BINDER IL-19MM)	2% @ 30 GYR	6"
TEMPORARY PAVEMENT:		
HMA SURFACE COURSE, MIX "D", N50 (IL 9.5MM)	4% @ 50 GYR	2"
HMA BINDER IL-19MM	4% @ 50 GYR	8"

UNIT WEIGHT USED TO CALCULATE ALL HMA SURFACE MIXTURE QUANTITIES IS 112 LBS/SQ YD/IN.

THE "AC TYPE" FOR POLYMERIZED HMA MIXES SHALL BE "SBS/SBR PG 70-22" AND FOR NON-POLYMERIZED HMA THE "AC TYPE" SHALL BE "PG 64-22" UNLESS MODIFIED BY DISTRICT ONE SPECIOL PROVISIONS.

FOR "PERCENT OF RAP" SEE DISTRICT ONE SPECIAL PROVISIONS.

FILE NAME = 62099CT5201.DGN	USER NAME = halsted	DESIGNED - PK	REVISIONS -	STATE OF ILLINOIS DEPARTMENT OF TRANSPORTATION	ILLINOIS RTE 1 OVER TRI-STATE I-80 / I-294 TYPICAL SECTIONS			F.A.P. RTE. 876	SECTION 2001-001BR	COUNTY COOK	TOTAL SHEETS 62	SHEET NO. 6
PLOT SCALE = 50,000' / IN.		CHECKED - RPI	REVISIONS -					SCALE: NONE	SHEET NO. OF SHEETS	STA. TO STA.	FED. ROAD DIST. NO. 1 (ILLINOIS) FED. AID PROJECT	
PLOT DATE = 8/3/2011		DATE - 08/05/2011	REVISIONS -									
CONTRACT NO. 62099												