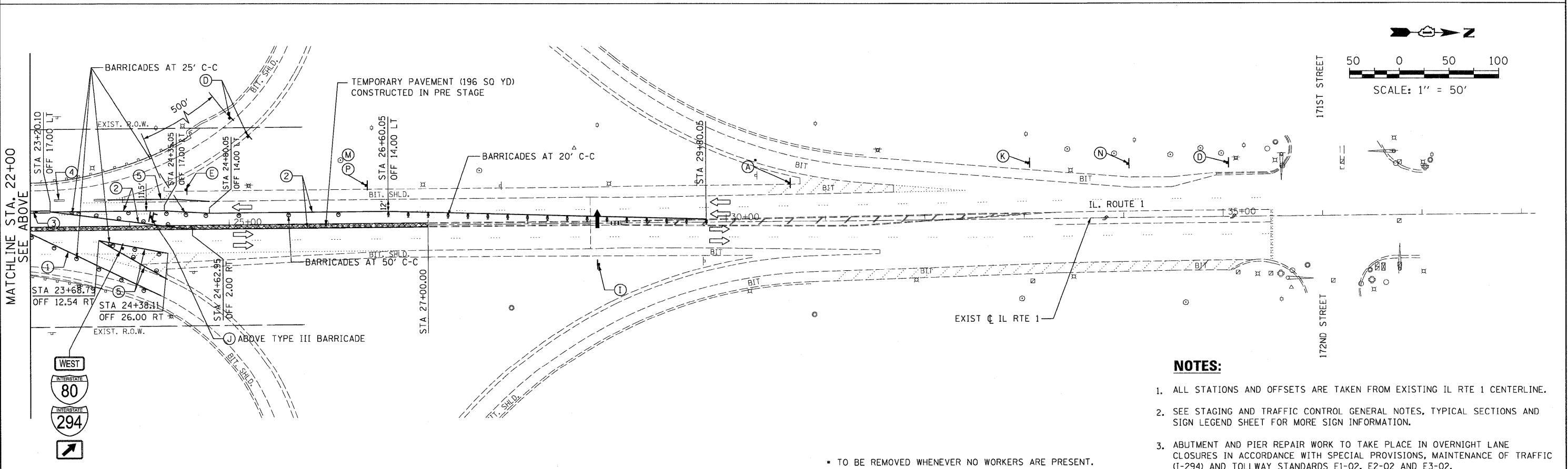
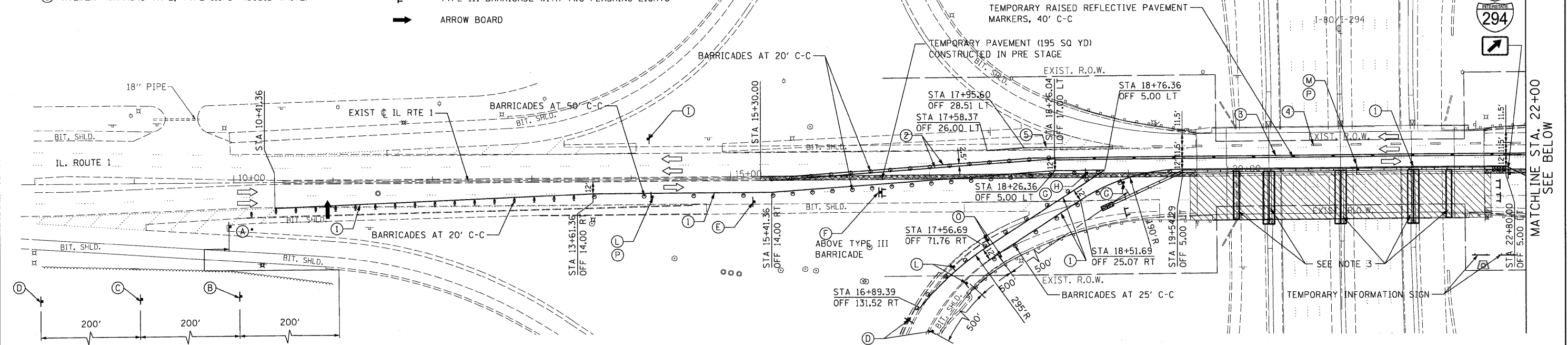
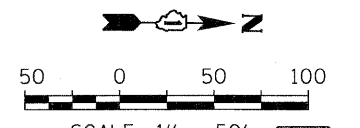


LEGEND:

- ① PAVEMENT MARKING TAPE, TYPE III 4" (SOLID WHITE)
- ② PAVEMENT MARKING TAPE, TYPE III 4" (SOLID YELLOW)
- ③ PAVEMENT MARKING TAPE, TYPE III 4" (DOUBLE YELLOW)
- ④ PAVEMENT MARKING TAPE, TYPE III 4" (30' SKIP 10' DASH WHITE)
- ⑤ PAVEMENT MARKING TAPE, TYPE III 5" (SOLID WHITE)

- CONSTRUCTION ZONE
- TEMPORARY PAVEMENT
- TEMPORARY CONCRETE BARRIER
- TEMPORARY IMPACT ATTENUATOR
- TYPE III BARRICADE WITH TWO FLASHING LIGHTS
- ARROW BOARD

- DRUM WITH STEADY BURN MONODIRECTIONAL LIGHT
- DIRECTION INDICATOR BARRICADE WITH STEADY BURN MONODIRECTIONAL LIGHT
- SIGN



- NOTES:**
1. ALL STATIONS AND OFFSETS ARE TAKEN FROM EXISTING IL RTE 1 CENTERLINE.
 2. SEE STAGING AND TRAFFIC CONTROL GENERAL NOTES, TYPICAL SECTIONS AND SIGN LEGEND SHEET FOR MORE SIGN INFORMATION.
 3. ABUTMENT AND PIER REPAIR WORK TO TAKE PLACE IN OVERNIGHT LANE CLOSURES IN ACCORDANCE WITH SPECIAL PROVISIONS, MAINTENANCE OF TRAFFIC (I-294) AND TOLLWAY STANDARDS E1-02, E2-02 AND E3-02.
- TO BE REMOVED WHENEVER NO WORKERS ARE PRESENT.

FILE NAME = E2099CMT02.DGN	USER NAME = heisted	DESIGNED - PK	REVISED -	STATE OF ILLINOIS DEPARTMENT OF TRANSPORTATION	ILLINOIS RTE 1 OVER TRI-STATE I-80 / I-294 STAGING AND TRAFFIC CONTROL PLAN (STAGE 1)			F.A.P. RTE.	SECTION	COUNTY	TOTAL SHEETS	SHEET NO.
	PLOT SCALE = 50.000' / IN.	CHECKED - RPI	REVISED -					876	2001-001BR	COOK	62	13
PLOT DATE = 6/28/2011	DATE - 07/01/2011	REVISED -	REVISED -	SCALE: 1"=50'			SHEET NO. OF SHEETS STA. TO STA.			CONTRACT NO. 62099		
							FED. ROAD DIST. NO. 1 ILLINOIS FED. AID PROJECT					