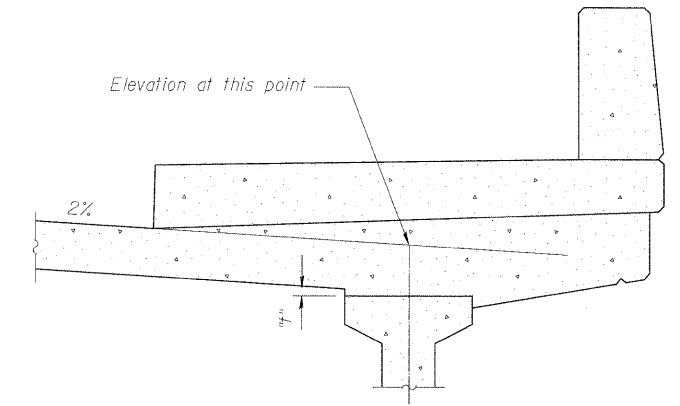
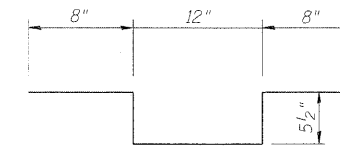


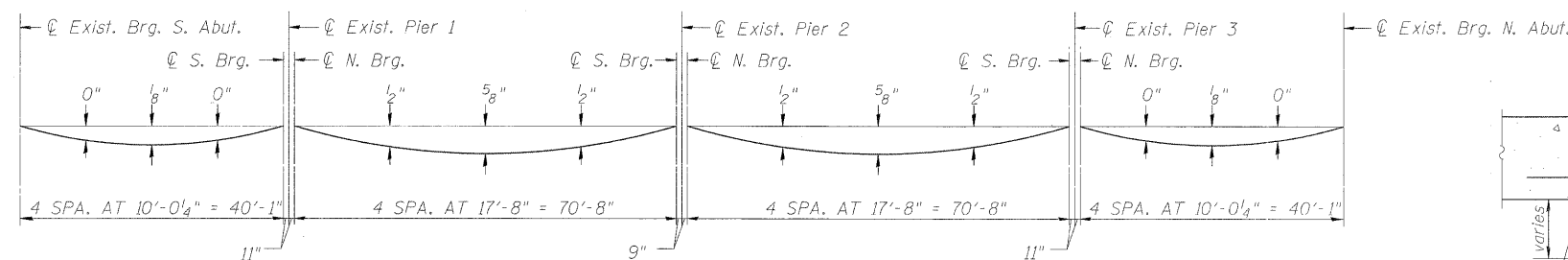
PLAN



SECTION AT SIDEWALK



BAR $d_8(E)$

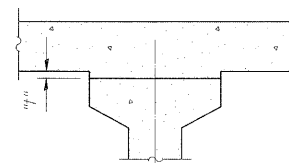


DEAD LOAD DEFLECTION DIAGRAM

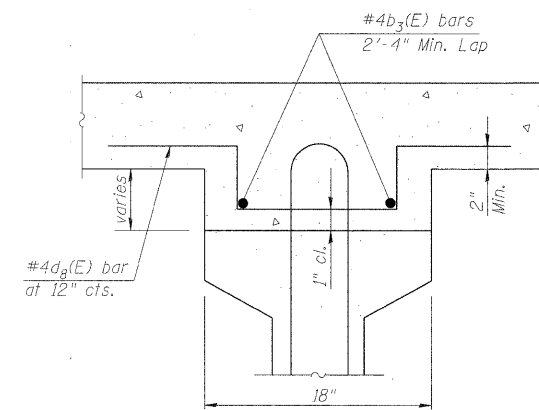
(Includes weight of concrete, excluding beams).

Note:
The above deflections are not to be used in the field if the engineer is working from the grade elevations adjusted for dead load deflections as shown on the following sheets.

To determine "t": After all precast prestressed beams have been erected, elevations of the top flanges of the beams shall be taken at intervals shown on this Sheet. These elevations subtracted from the "Theoretical Grade Elevations Adjusted for Dead Load Deflections" shown below, minus slab thickness, equals the fillet heights "t" above top flanges of beams.



FILLET HEIGHTS



FILLET REINFORCEMENT

Provide additional reinforcing for fillets over 2 1/2". Required for girders 1-14 from Sta. 21+13.60 to Sta. 20+81.60. Bars may be fillet to meet clearances shown. These bars are included in the Bill of Material table shown on the Superstructure Details Sheet.

BEAM 1

Location	Station	Offset*	Theoretical Grade Elevations	Theoretical Grade Elevations Adjusted For Dead Load Deflection
Bk. Exist. S. Abut.	19+98.35	-44.00	638.89	638.89
∅ Brg. S. Abut.	20+00.27	-44.00	638.90	638.90
A	20+10.27	-44.00	638.97	638.98
B	20+20.27	-44.00	639.04	639.05
C	20+30.27	-44.00	639.10	639.10
∅ S. Bearing	20+40.35	-44.00	639.16	639.16
∅ Exist. Pier 1	20+41.27	-44.00	639.16	639.16
∅ N. Bearing	20+42.19	-44.00	639.16	639.16
D	20+52.19	-44.00	639.21	639.23
E	20+62.19	-44.00	639.24	639.29
F	20+72.19	-44.00	639.28	639.33
G	20+82.19	-44.00	639.30	639.36
H	20+92.19	-44.00	639.32	639.36
I	21+02.19	-44.00	639.33	639.36
∅ S. Bearing	21+12.85	-44.00	639.34	639.34
∅ Exist. Pier 2	21+13.60	-44.00	639.34	639.34
∅ N. Bearing	21+14.35	-44.00	639.34	639.34
J	21+24.35	-44.00	639.33	639.36
K	21+34.35	-44.00	639.32	639.37
L	21+44.35	-44.00	639.31	639.36
M	21+54.35	-44.00	639.28	639.34
N	21+64.35	-44.00	639.25	639.30
O	21+74.35	-44.00	639.22	639.24
∅ S. Bearing	21+85.02	-44.00	639.17	639.17
∅ Exist. Pier 3	21+85.94	-44.00	639.16	639.16
∅ N. Bearing	21+86.86	-44.00	639.16	639.16
P	21+96.86	-44.00	639.11	639.12
Q	22+06.86	-44.00	639.05	639.06
R	22+16.86	-44.00	638.99	638.99
∅ Brg. N. Abut.	22+26.94	-44.00	638.91	638.91
Bk. Exist. N. Abut.	22+28.85	-44.00	638.90	638.90



FILE NAME = 0160199-62099-05-SLAB1.dgn

USER NAME =
DESIGNED - JPMILLA
CHECKED - RALEE
DRAWN - RMKANE
PLOT DATE = 08/05/2011

REVISIONS
REVISOR
DATE

STATE OF ILLINOIS
DEPARTMENT OF TRANSPORTATION

IL RT 1 - HALSTED ST. OVER I-80/294
TOP OF SLAB ELEVATIONS 1

SHEET NO. 05 OF 33 SHEETS

F.A.P. RTE.	SECTION	COUNTY	TOTAL SHEETS	SHEET NO.
876	2001-001BR	COOK	62	24
STRUCTURE NO. 016-0199			CONTRACT NO. 62099	

ILLINOIS FED. AID PROJECT