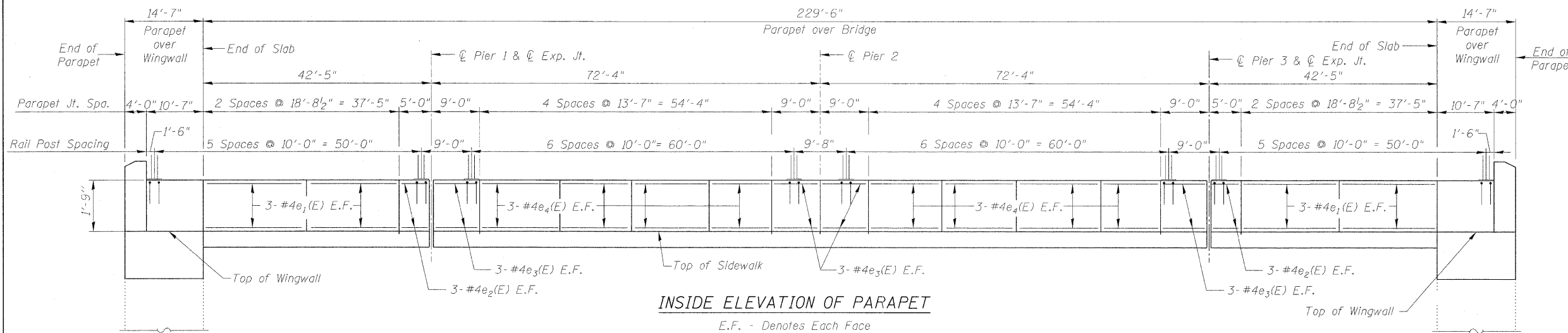
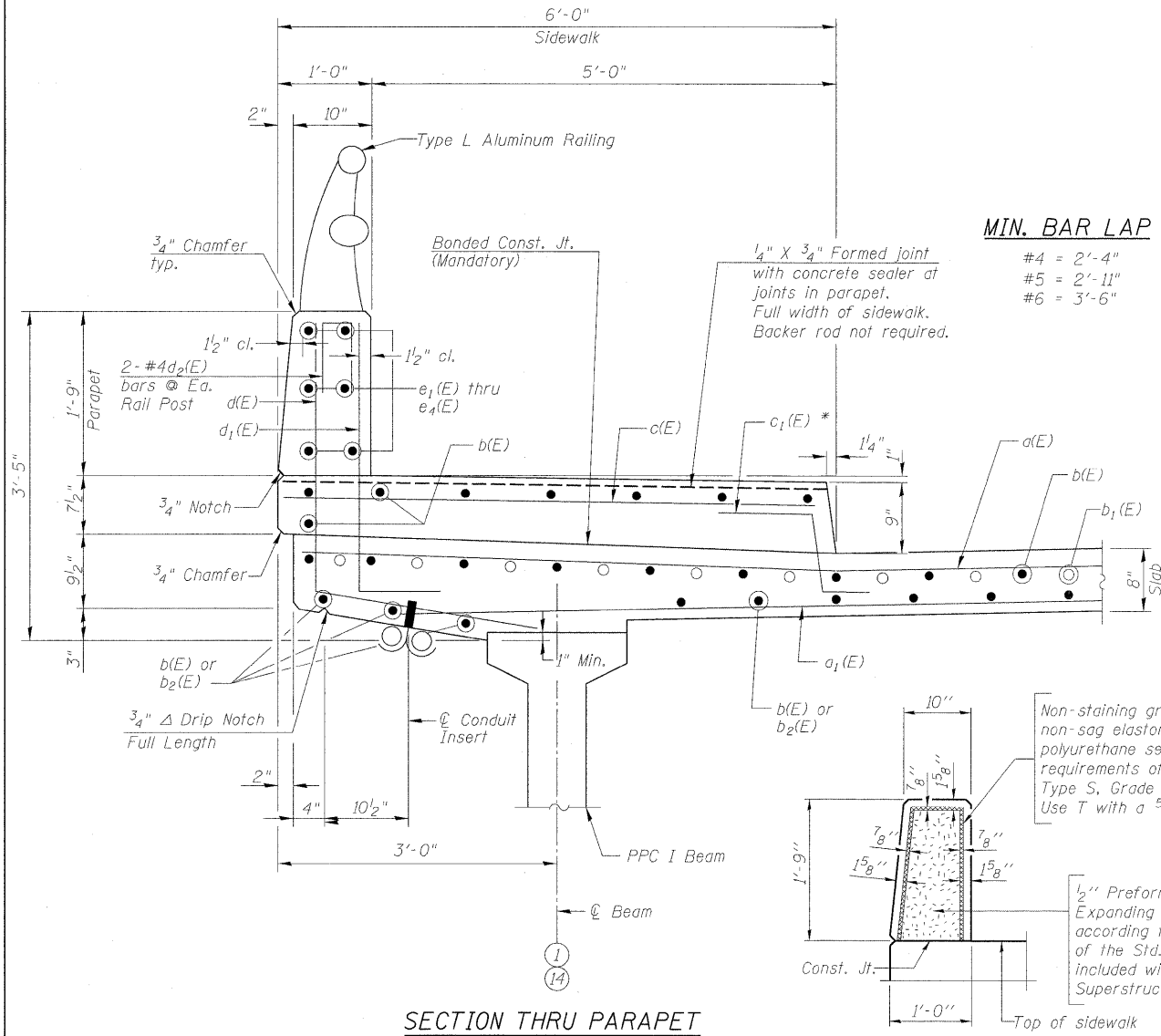


**SUPERSTRUCTURE  
BILL OF MATERIAL**

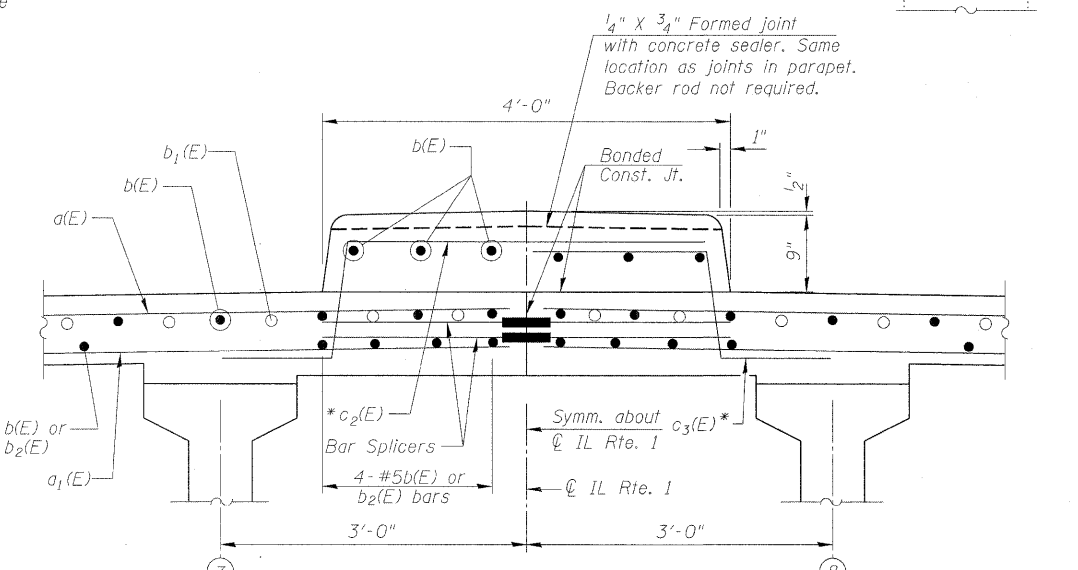
Bar	No.	Size	Length	Shape
a(E)	620	#5	46'-6"	—
a <sub>1</sub> (E)	558	#5	45'-8"	—
a <sub>2</sub> (E)	208	#5	5'-10"	—
a <sub>3</sub> (E)	16	#5	25'-0"	—
b(E)	880	#5	40'-7"	—
b <sub>1</sub> (E)	94	#6	38'-0"	—
b <sub>2</sub> (E)	430	#5	3'-2"	—
b <sub>3</sub> (E)	56	#4	34'-0"	—
c(E)	468	#5	5'-8"	—
c <sub>1</sub> (E)	468	#5	2'-5"	—
c <sub>2</sub> (E)	234	#5	5'-7"	—
c <sub>3</sub> (E)	234	#5	3'-7"	—
d(E)	468	#4	5'-6"	—
d <sub>1</sub> (E)	468	#6	3'-4"	—
d <sub>2</sub> (E)	104	#4	2'-0"	—
d <sub>3</sub> (E)	48	#6	4'-11"	—
d <sub>4</sub> (E)	20	#6	6'-9"	—
d <sub>5</sub> (E)	48	#4	4'-1"	—
d <sub>6</sub> (E)	20	#4	5'-11"	—
d <sub>7</sub> (E)	4	#4	7'-5"	—
d <sub>8</sub> (E)	910	#4	3'-3"	—
e <sub>1</sub> (E)	48	#4	18'-5"	—
e <sub>2</sub> (E)	24	#4	4'-7"	—
e <sub>3</sub> (E)	48	#4	8'-7"	—
e <sub>4</sub> (E)	96	#4	13'-3"	—
e <sub>5</sub> (E)	24	#4	10'-3"	—
e <sub>6</sub> (E)	32	#4	3'-8"	—
e <sub>7</sub> (E)	8	#4	3'-9"	—
m <sub>1</sub> (E)	24	#6	25'-1"	—
m <sub>2</sub> (E)	16	#6	25'-1"	—
m <sub>3</sub> (E)	26	#6	4'-8"	—
m <sub>4</sub> (E)	4	#6	1'-9"	—
m <sub>5</sub> (E)	78	#4	5'-11"	—
m <sub>6</sub> (E)	14	#6	5'-10"	—
m <sub>7</sub> (E)	26	#8	4'-8"	—
s(E)	312	#4	8'-5"	—
s <sub>1</sub> (E)	168	#4	10'-8"	—
s <sub>2</sub> (E)	78	#4	11'-8"	—
v(E)	130	#8	2'-9"	—
v <sub>1</sub> (E)	168	#6	4'-0"	—
x(E)	676	#6	8'-1"	—
Item	Unit	Total		
Reinforcement Bars, Epoxy Coated	Lbs.	147,670		
Concrete Superstructure	Cu. Yd.	914.0		



**INSIDE ELEVATION OF PARAPET**  
E.F. - Denotes Each Face



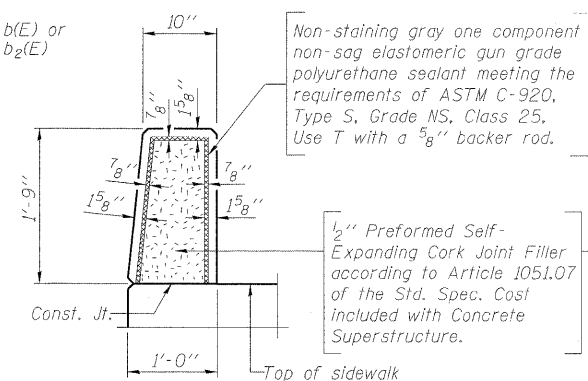
**SECTION THRU PARAPET**



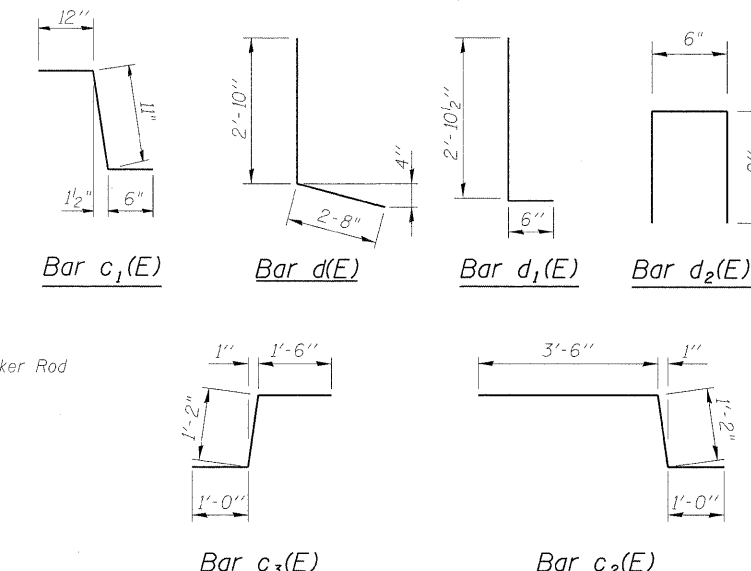
**SECTION THRU MEDIAN**

**MIN. BAR LAP**

- #4 = 2'-4"
- #5 = 2'-11"
- #6 = 3'-6"



**PARAPET JOINT DETAILS**



Notes:  
 Bars indicated thus 3 x 2-#5 etc. indicates 3 lines of bars with 2 lengths per line.  
 See Parapet over Wingwalls Sheet for details of Parapet over Wingwall.  
 See Top of Slab Elevation Sheet 1 for additional Reinforcing required in fillet for parapets over 2'-2" tall.  
 \* In lieu of bottom leg, c<sub>1</sub>(E), c<sub>2</sub>(E) and c<sub>3</sub>(E) bars may be cored and set according to Article 509.06 of the Standard Specifications. Cored holes shall be roughened or scored per manufacturer's recommendations. Maximum depth of cored hole shall not exceed 6".



FILE NAME = 0160199-62099-11-SUPER\_DET.dgn  
 USER NAME =  
 DESIGNED - JPMILLA  
 CHECKED - RALEE  
 DRAWN - RMKANE  
 PLOT DATE = 08/05/2011

DESIGNED - JPMILLA  
 CHECKED - RALEE  
 DRAWN - RMKANE  
 PLOT DATE = 08/05/2011

**STATE OF ILLINOIS  
DEPARTMENT OF TRANSPORTATION**

**IL RT 1 - HALSTED ST. OVER I-80/294  
SUPERSTRUCTURE DETAILS**

F.A.P. RTE. SECTION COUNTY TOTAL SHEETS SHEET NO.  
 876 2001-001BR COOK 62 30  
 STRUCTURE NO. 016-0199 CONTRACT NO. 62099  
 ILLINOIS FED. AID PROJECT