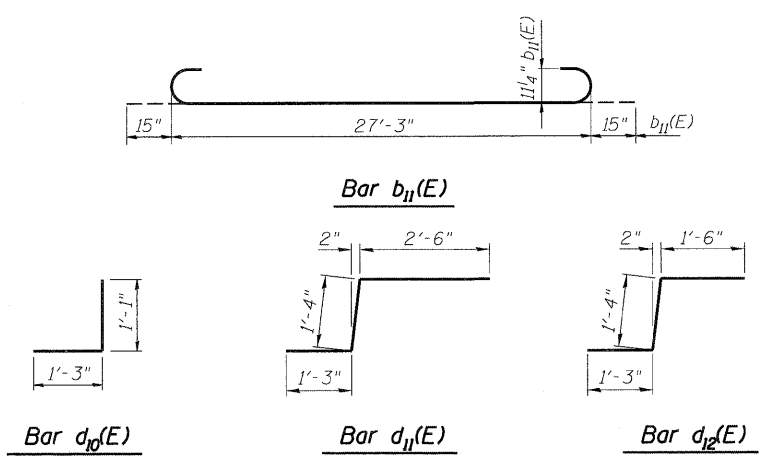


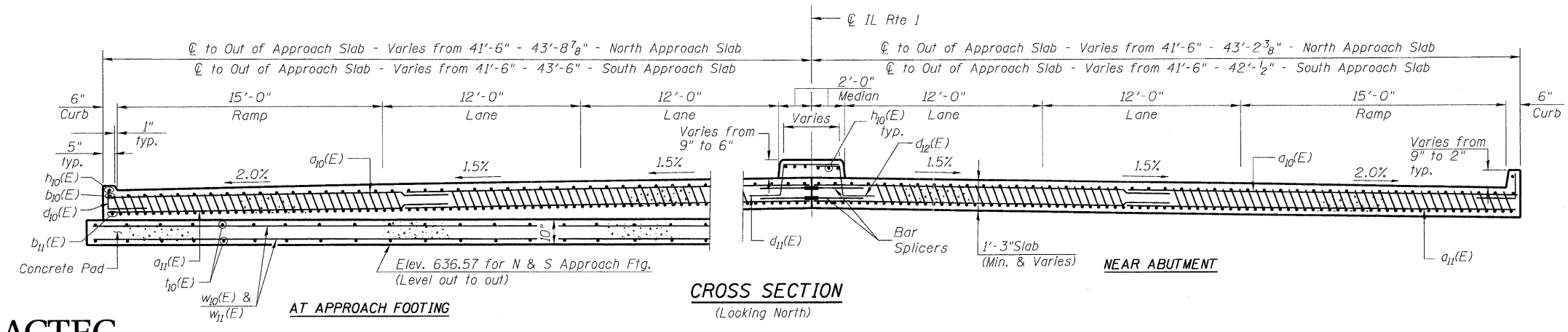
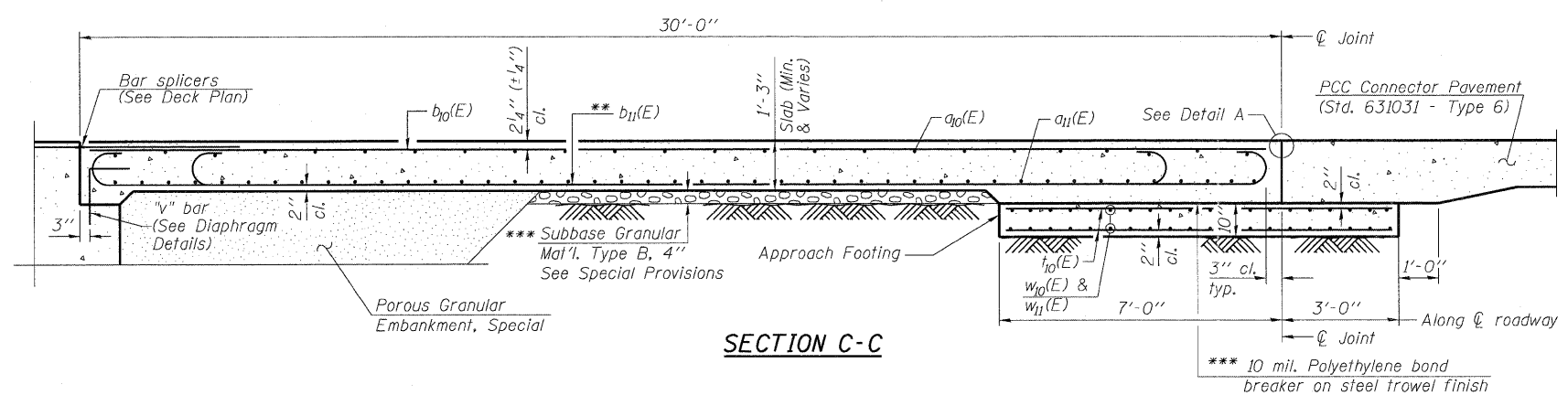
** Tilt #9₁₁(E) bars as required to maintain clearance.
 *** Cost included with Concrete Superstructure.

**TWO APPROACHES
 BILL OF MATERIAL**

Bar	No.	Size	Length	Shape
a ₁₀ (E)	200	#4	22'-11"	—
a ₁₁ (E)	368	#5	23'-3"	—
b ₁₀ (E)	143	#4	29'-6"	—
b ₁₁ (E)	419	#9	29'-9"	—
d ₁₀ (E)	124	#5	2'-4"	L
d ₁₁ (E)	62	#5	5'-1"	J
d ₁₂ (E)	62	#5	4'-1"	J
h ₁₀ (E)	16	#5	29'-8"	—
h ₁₁ (E)	358	#4	9'-8"	—
w ₁₀ (E)	120	#5	43'-10"	—
w ₁₁ (E)	40	#5	42'-10"	—
Concrete Superstructure		Cu. Yd.	301	
Concrete Structures		Cu. Yd.	55	
Reinforcement Bars, Epoxy Coated		Pound	68160	



Notes:
 See Bridge Approach Slab Sheet for Detail A.
 Approach slab, curb and median concrete shall be paid for as Concrete Superstructure.
 Approach footing concrete shall be paid for as Concrete Structures.
 Reinforcement shall be paid for as Reinforcement Bars, Epoxy Coated.
 For "v" bar details, See Diaphragm Details 2 Sheet.
 The approach footing maximum applied service bearing pressure (Q_{max}) = 2.0 ksf.
 For bar splicer details, See Bar Splicer Assembly Sheet.
 Cost of excavation for approach footing included with Concrete Structures.
 For Porous Granular Embankment, Special and drainage treatment details, See General Notes & Bill of Materials Sheet.



FILE NAME = 0160199-62099-13-APPROACH DET.dgn	USER NAME =	DESIGNED - JPMILLA	REVISED -	STATE OF ILLINOIS DEPARTMENT OF TRANSPORTATION	IL RT 1 - HALSTED ST. OVER I-80/294 BRIDGE APPROACH SLAB DETAILS	F.A.P. RTE. = 876	SECTION = 2001-001BR	COUNTY = COOK	TOTAL SHEETS = 62	SHEET NO. = 32		
PLOT SCALE =	DRAWN - RMKANE	REVISED -	STRUCTURE NO. 016-0199			CONTRACT NO. 62099						
PLOT DATE = 07/01/2011	CHECKED - RALEE	REVISED -	SHEET NO. 13 OF 33 SHEETS									
						ILLINOIS FED. AID PROJECT						