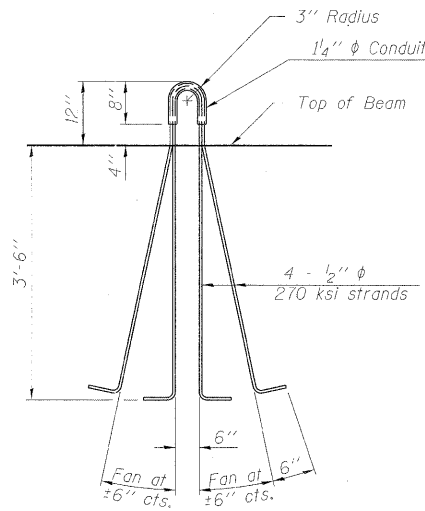
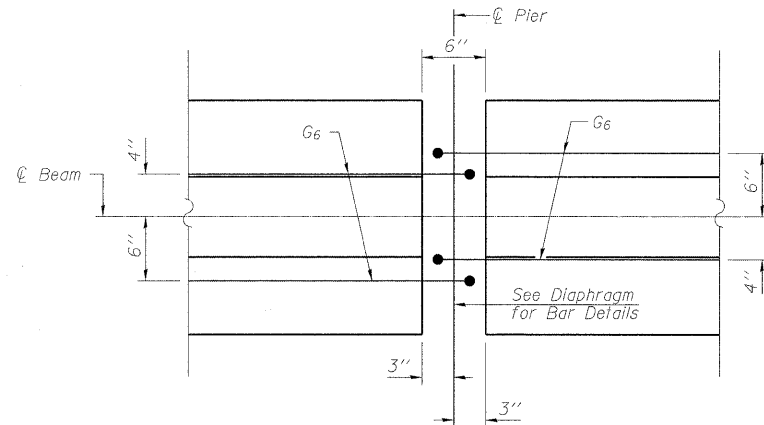


ELEVATION OF BEAM AT PIER 2

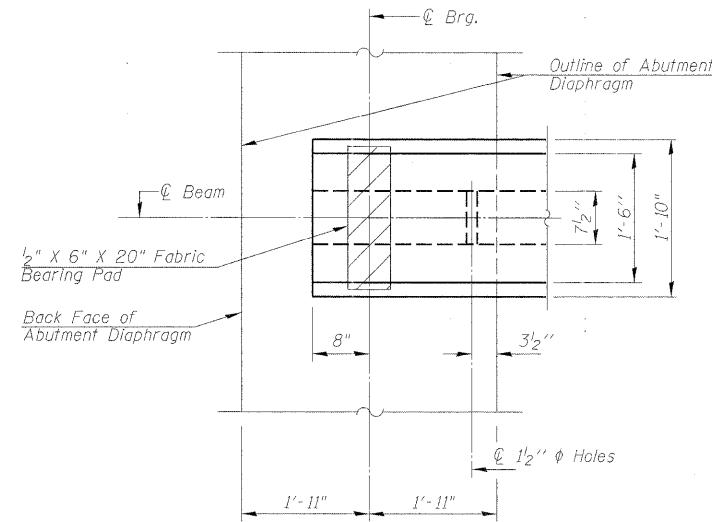


LIFTING LOOP DETAIL

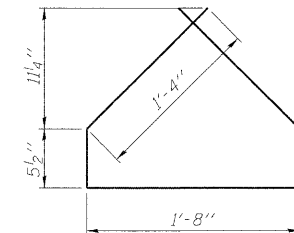
Notes:
 Inserts for 3/4" ϕ threaded dowel rods, when specified, are to be two strut, ferrule type for interior beams and single ferrule, flared loop type for exterior beams. Prestressing steel shall be uncoated high strength, low relaxation 7-wire strand, Grade 270. The nominal diameter shall be 1/2" and the nominal cross-sectional area shall be 0.153 sq. in.
 Reinforcement bars shall conform to ASTM A 706, Grade 60. A minimum 2 1/2" ϕ lifting pin shall be used to engage the lifting loops during handling. Till G₆ bars when necessary to maintain 1 1/2" clearance.
 The top and bottom plates shall be AASHTO M270 Grade 50. The bottom plates and studs shall be galvanized according to AASHTO M111. Top plates and threaded rods need not be galvanized.
 Threaded rods shall be ASTM F 1554 Grade 55.
 Beams requiring G₆ bar assemblies shall not be released from the fabricator until they have attained 45 days of age or older.



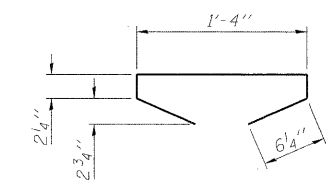
PLAN OF BEAM AT PIER AT PIER 2



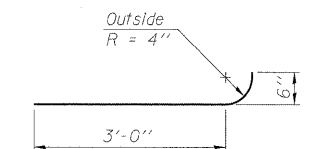
PLAN OF BEAM AT ABUTMENT



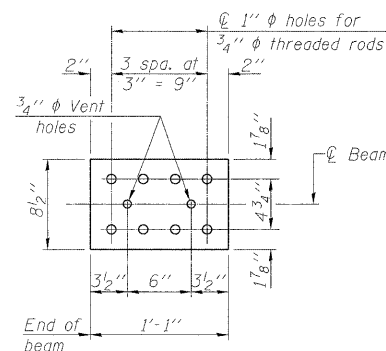
BAR G4



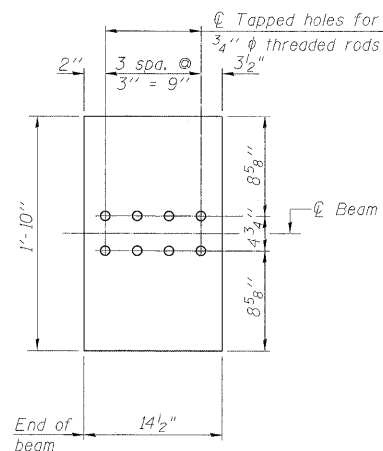
BAR G5



BAR G6

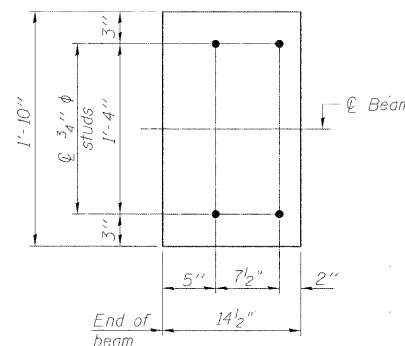


TOP PLATE

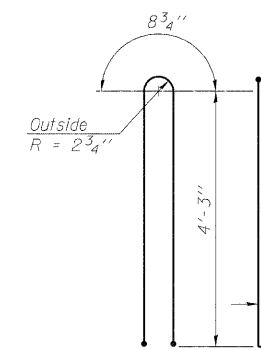


BOTTOM PLATE (Showing threaded rods)

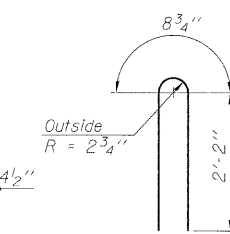
For holes in bottom plate for pintles see Bearing Details Elastomeric and Fixed Sheet.



BOTTOM PLATE (Showing studs)



BAR G1



BAR G2

BILL OF MATERIAL

Item	Unit	Total
Furnishing and Erecting Precast Prestressed Concrete I-Beams, 48 in.	Ft.	3,171



FILE NAME = 0160199-62099-21-BEAM_2.dgn

USER NAME =
 PLOT SCALE =
 PLOT DATE = 08/05/2011

DESIGNED - JPMILLA
 CHECKED - RALEE
 DRAWN - RMKANE
 CHECKED - RALEE

REVISED -
 REVISED -
 REVISED -
 REVISED -

STATE OF ILLINOIS
 DEPARTMENT OF TRANSPORTATION

IL RT 1 - HALSTED ST. OVER I-80/294
 BEAM DETAILS 2

SHEET NO. 21 OF 33 SHEETS

F.A.P. RTE.	SECTION	COUNTY	TOTAL SHEETS	SHEET NO.
876	2001-001BR	COOK	62	40
STRUCTURE NO. 016-0199			CONTRACT NO. 62099	
ILLINOIS FED. AID PROJECT				