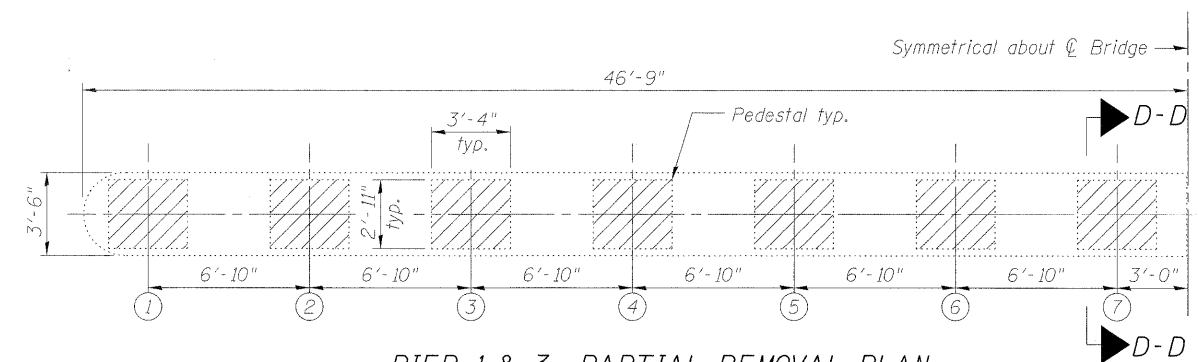
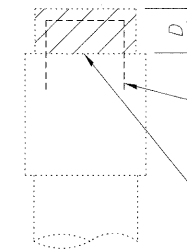


ABUTMENT PARTIAL REMOVAL PLAN



PIER 1 & 3 PARTIAL REMOVAL PLAN

(Removal is not required at Pier 2)



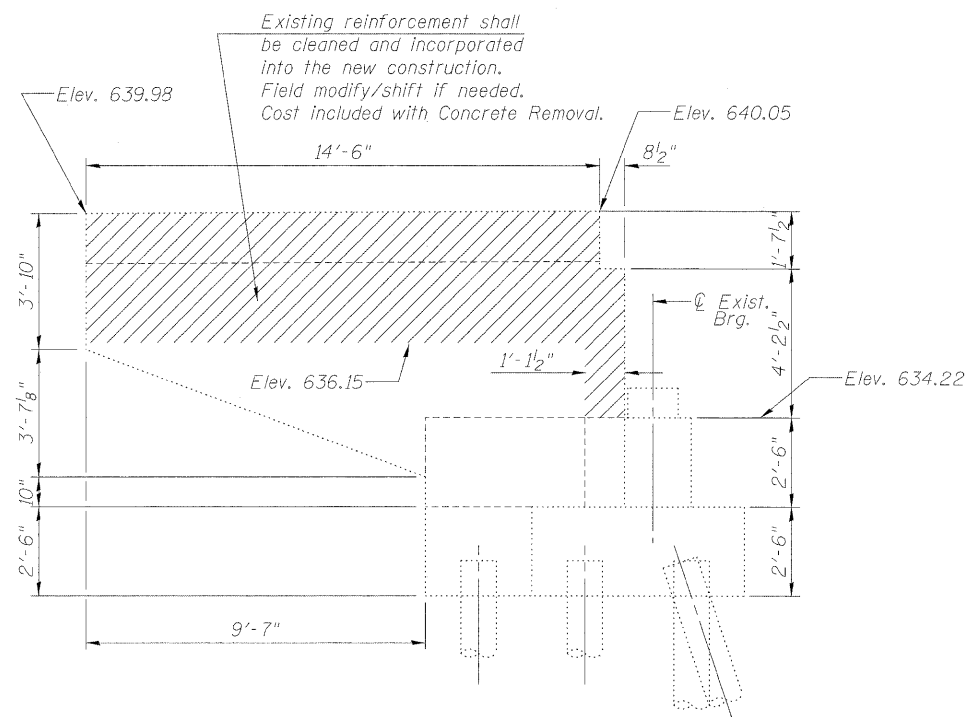
VIEW D-D

Burn existing reinforcing flush with pier cap.
Grind reinforcing smooth and seal with epoxy.
Cost is incidental to Concrete Removal.

Final surface must be flush, level
and capable of properly seating
the replacement bearings.
Cost incidental to Concrete Removal.

PEDESTAL HEIGHT, D

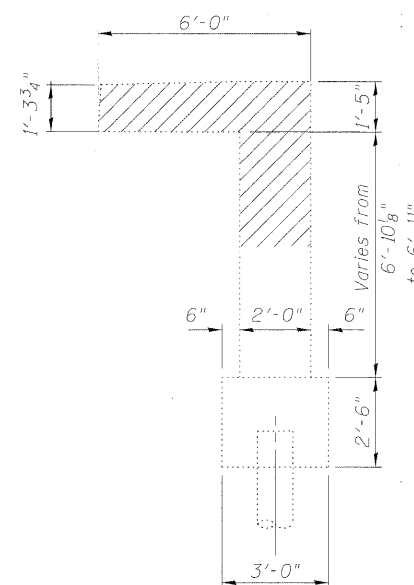
LOCATION	Pier 1 & 3
①	0.17 ft.
②	0.27 ft.
③	0.38 ft.
④	0.48 ft.
⑤	0.58 ft.
⑥	0.68 ft.
⑦	0.79 ft.



VIEW A-A

(Elevations shown are from as-built plans)

(See Parapet Over Wingwall Sheet for reconstruction of wingwall details.)



SECTION C-C

BILL OF MATERIAL

ITEM	UNIT	TOTAL
Concrete Removal	Cu.Yd.	40.0

LEGEND

Limits of Concrete Removal

Existing Foundation

NOTES:
Removal of diaphragm concrete at abutments is included in Removal of Existing Superstructure and not included in the quantity for Concrete Removal.

Existing pedestals at abutments are not to be disturbed during removal of the diaphragms, but grinding will be required to provide 1/4" minimum clearance to bottom of beam.



FILE NAME = 0160199-62099-25-REMOVAL.dgn	USER NAME =	DESIGNED - JPMILLA	REVISED -	STATE OF ILLINOIS DEPARTMENT OF TRANSPORTATION	IL RT 1 - HALSTED ST. OVER I-80/294 PARTIAL REMOVAL DETAILS	F.A.P. RTE. SECTION COUNTY TOTAL SHEETS SHEET NO.	876 2001-001BR COOK 62 44
PLOT SCALE =	DRAWN - RMKANE	REVISED -	STRUCTURE NO. 016-0199 CONTRACT NO. 62099			ILLINOIS FED. AID PROJECT	
PLOT DATE = 08/05/2011	CHECKED - RALEE	REVISED -	SHEET NO. 25 OF 33 SHEETS				