

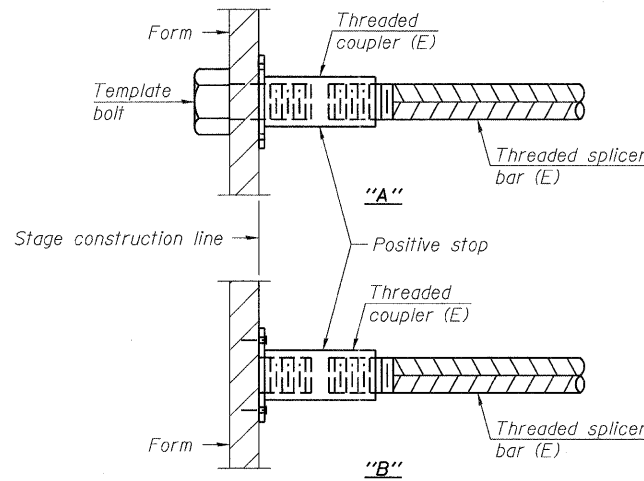
STANDARD BAR SPLICER ASSEMBLY

Minimum Lap Lengths					
Bar size to be spliced	Table 1	Table 2	Table 3	Table 4	Table 5
3, 4	1'-5"	1'-11"	2'-1"	2'-4"	2'-3"
5	1'-9"	2'-5"	2'-7"	2'-11"	2'-10"
6	2'-1"	2'-11"	3'-1"	3'-6"	3'-4"
7	2'-9"	3'-10"	4'-2"	4'-8"	4'-6"
8	3'-8"	5'-1"	5'-5"	6'-2"	5'-10"
9	4'-7"	6'-5"	6'-10"	7'-9"	7'-5"

- Table 1: Black bar, 0.8 Class C
- Table 2: Black bar, Top bar lap, 0.8 Class C
- Table 3: Epoxy bar, 0.8 Class C
- Table 4: Epoxy bar, Top bar lap, 0.8 Class C
- Table 5: Epoxy bar, Top bar lap, Class B

Threaded splicer bar length = min. lap length + 1 1/2" + thread length

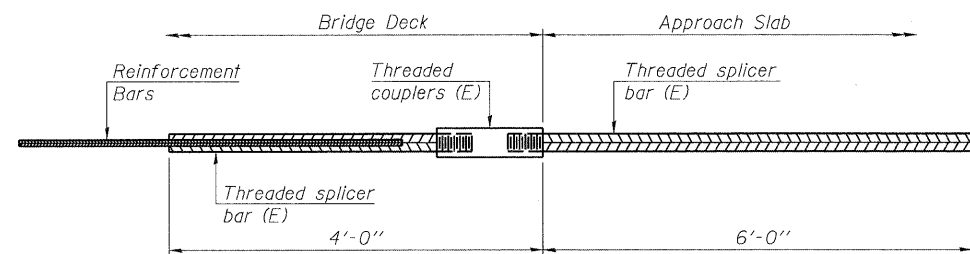
* Epoxy not required on Bar Splicer Assembly components used in conjunction with black bars.



INSTALLATION AND SETTING METHODS

"A" : Set bar splicer assembly by means of a template bolt.
 "B" : Set bar splicer assembly by nailing to wood forms or cementing to steel forms.
 (E) : Indicates epoxy coating.

Location	Bar size	No. assemblies required	Table for minimum lap length
N. Abut. Diaphragm	#6	6	3
S. Abut. Diaphragm	#6	6	3
Slab	#5	589	3
N. Appr. Slab	#4	25	3
N. Appr. Slab	#5	86	3
S. Appr. Slab	#4	25	3
S. Appr. Slab	#5	86	3
Pier 1 Diaphragm	#4	8	3
Pier 1 Diaphragm	#6	4	3
Pier 2 Diaphragm	#4	6	3
Pier 2 Diaphragm	#8	2	3
Pier 3 Diaphragm	#4	8	3
Pier 3 Diaphragm	#6	4	3



BAR SPLICER ASSEMBLY FOR #5 BAR ON INTEGRAL OR SEMI-INTEGRAL ABUTMENTS

No. required = 192

Notes:
 Splicer bars shall be deformed with threaded ends and have a minimum 60 ksi yield strength.
 All reinforcement shall be lapped and tied to the splicer bars.
 Bar splicer assemblies shall be epoxy coated according to the requirements for reinforcement bars. See Section 508 of the Standard Specifications.
 See approved list of bar splicer assemblies and mechanical splicers for alternatives.



FILE NAME = 0160199-62099-27-SPLICER.dgn	USER NAME =	DESIGNED - JPMILLA	REVISED -	STATE OF ILLINOIS DEPARTMENT OF TRANSPORTATION	IL. RT 1 - HALSTED ST. OVER I-80294 BAR SPLICER ASSEMBLY	F.A.P. RTE. 876	SECTION 2001-001BR	COUNTY COOK	TOTAL SHEETS 62	SHEET NO. 51
PLOT SCALE =	DRAWN - RMKANE	REVISED -	STRUCTURE NO. 016-0199			CONTRACT NO. 62099				
PLOT DATE = 07/01/2011	CHECKED - RALEE	REVISED -	ILLINOIS FED. AID PROJECT							
SHEET NO. 32 OF 33 SHEETS										