

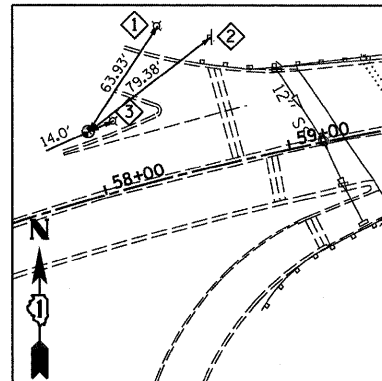
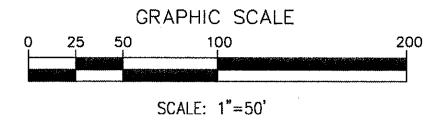
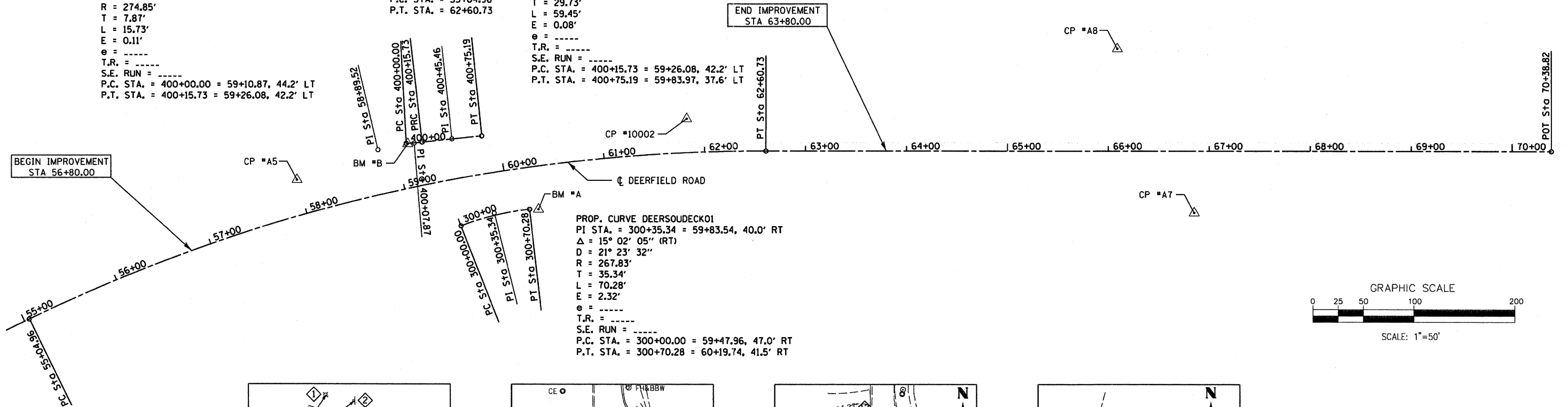
PROP. CURVE DEERNORDECKO1  
 PI STA. = 400+07.87 = 59+18.44, 43.0' LT  
 $\Delta = 3^\circ 16' 47''$  (LT)  
 $D = 20^\circ 50' 47''$   
 $R = 274.85'$   
 $T = 7.87'$   
 $L = 15.73'$   
 $E = 0.11'$   
 $e = \text{-----}$   
 $T.R. = \text{-----}$   
 $S.E. RUN = \text{-----}$   
 P.C. STA. = 400+00.00 = 59+10.87, 44.2' LT  
 P.T. STA. = 400+15.73 = 59+26.08, 42.2' LT

PROP. CURVE C101  
 PI STA. = 58+89.52  
 $\Delta = 26^\circ 06' 17''$  (RT)  
 $D = 3^\circ 27' 15''$   
 $R = 1,658.79'$   
 $T = 384.56'$   
 $L = 755.77'$   
 $E = 43.99'$   
 $e = \text{-----}$   
 $T.R. = \text{-----}$   
 $S.E. RUN = \text{-----}$   
 P.C. STA. = 55+04.96  
 P.T. STA. = 62+60.73

PROP. CURVE DEERNORDECKO2  
 PI STA. = 400+45.46 = 59+55.00, 39.8' LT  
 $\Delta = 0^\circ 36' 11''$  (RT)  
 $D = 1^\circ 00' 52''$   
 $R = 5,647.93'$   
 $T = 29.73'$   
 $L = 59.45'$   
 $E = 0.08'$   
 $e = \text{-----}$   
 $T.R. = \text{-----}$   
 $S.E. RUN = \text{-----}$   
 P.C. STA. = 400+15.73 = 59+26.08, 42.2' LT  
 P.T. STA. = 400+75.19 = 59+83.97, 37.6' LT

PROP. CURVE DEERSOUDECKO1  
 PI STA. = 300+35.34 = 59+83.54, 40.0' RT  
 $\Delta = 15^\circ 02' 05''$  (RT)  
 $D = 21^\circ 23' 32''$   
 $R = 267.83'$   
 $T = 35.34'$   
 $L = 70.28'$   
 $E = 2.32'$   
 $e = \text{-----}$   
 $T.R. = \text{-----}$   
 $S.E. RUN = \text{-----}$   
 P.C. STA. = 300+00.00 = 59+47.96, 47.0' RT  
 P.T. STA. = 300+70.28 = 60+19.74, 41.5' RT

ALIGNMENT COORDINATES - DEERFIELD ROAD			
	STATION	NORTH	EAST
PC	55+04.96	2009014.599	1124062.966
PI	58+89.52	2009183.209	1124408.592
PT	62+60.73	2009182.539	1124793.151
POT	70+38.82	2009182.539	1125571.234



**CONTROL POINT #A5**

AN 8" SPIKE NEAR NORTH BOUND RAMP TO U.S. ROUTE 41.

STA. 57+99.65, 34.9' LT  
 N 2009153.2450  
 E 1124328.3570

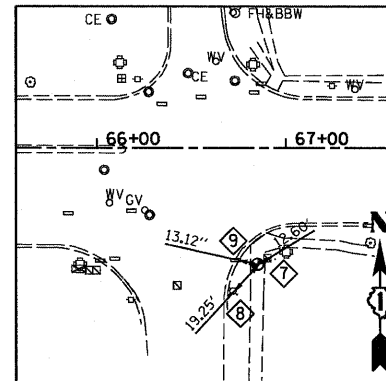
1. "X" IN CONCRETE BASE LIGHT POLE
2. "X" IN FACE OF CONCRETE BASE OF SIGN
3. "X" IN CONCRETE BASE OF LIGHT POLE

**BENCHMARK #A**

ELEV. 638.66

SQUARE CUT ON LOWER WING WALL SE CORNER OF SOUTH BRIDGE WALL

STA. 60+28.68, 42.8' RT  
 N 2009124.344  
 E 1124567.717



**CONTROL POINT #A7**

IS A "X" IN SIDEWALK S.E. CORNER DEERFIELD ROAD AND BEVERLY ROAD

STA. 66+84.97, 61.5 RT  
 N 2009121.0360  
 E 1125217.3920

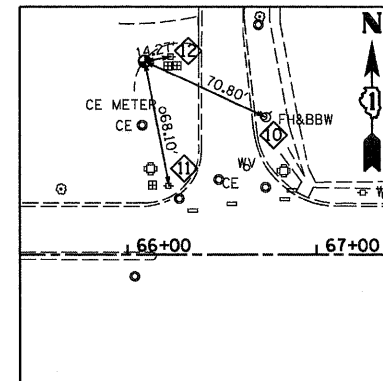
7. "X" IN METAL RIM OF HAND HOLD
8. "X" IN FACE OF LIGHT POLE
9. "X" IN RIM OF INLET

**BENCHMARK #B**

ELEV. 644.96

SQUARE CUT ON UPPER WINGWALL NW CORNER OF NORTH BRIDGE WALL

STA. 59+12.22, 43.4' LT  
 N 2009189.158  
 E 1124438.147

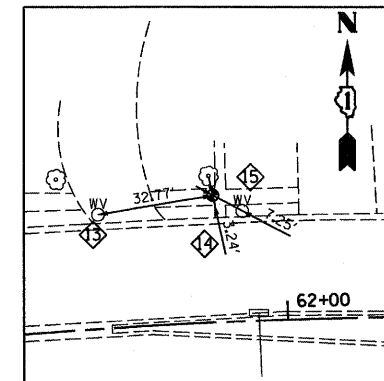


**CONTROL POINT #A8**

PK NAIL IN BITUMINOUS SERVICE ENTRANCE N.W. CORNER DEERFIELD ROAD AND BEVERLY ROAD

STA. 66+09.05, 102.4' LT  
 N 2009284.9500  
 E 1125141.4650

10. TOP SPINDLE FIRE HYDRANT
11. 3 NAILS AND RIBBON IN POWER POLE
12. 3 NAILS AND RIBBON IN POWER POLE



**CONTROL POINT #10002**

IS A CUT "X" IN SIDEWALK ALONG NORTH SIDE OF DEERFIELD ROAD 450' +/- WEST OF BEVERLY ROAD

STA. 61+83.65, 33.7 LT  
 N 2009214.592  
 E 1124714.582

13. WATER VALVE
14. CORNER OF SIDEWALK
15. WATER VALVE

FILE NAME =  
 ...Roadway\01-62101-sht-ATB.dgn  
 PLOT TIME = 9:49:35 AM  
 PLOT DATE = 6/23/2011

DESIGNED - MC  
 DRAWN - MC  
 CHECKED - TRP  
 DATE - 06/24/2011

REVISED -  
 REVISED -  
 REVISED -  
 REVISED -

**SEPSTEIN**  
 880 W. FULTON ST. CHICAGO, ILLINOIS 60611-1209  
 TEL. 312.454.9100 FAX 312.558.1217  
 WEB: www.sepstein-llc.com

**STATE OF ILLINOIS**  
**DEPARTMENT OF TRANSPORTATION**

**ALIGNMENT, TIES AND BENCHMARKS**  
 SCALE: 1" = 50' SHEET NO. 1 OF 1 SHEETS STA. 54+79.77 TO STA. 70+38.82

F.A.U. RTE.	SECTION	COUNTY	TOTAL SHEETS	SHEET NO.
1257	104RB-R	LAKE	54	7
CONTRACT NO. 62102				
ILLINOIS FED. AID PROJECT				