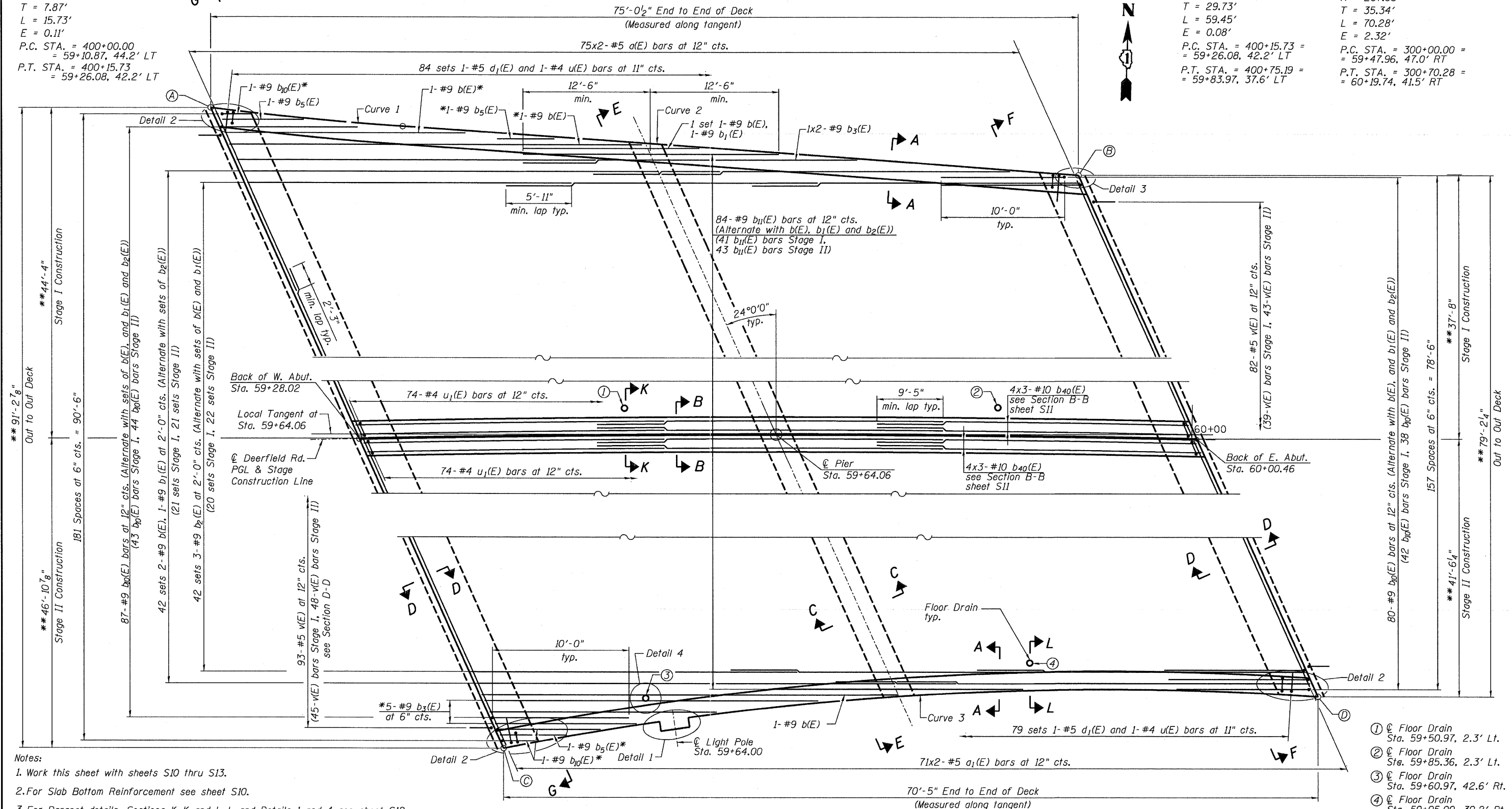


**CURVE 1**  
 PI STA. = 400+07.87 = 59+18.44, 43.0' LT  
 $\Delta = 3^\circ 16' 47''$  (LT)  
 $D = 20^\circ 50' 47''$   
 $R = 274.85'$   
 $T = 7.87'$   
 $L = 15.73'$   
 $E = 0.11'$   
 P.C. STA. = 400+00.00  
 = 59+10.87, 44.2' LT  
 P.T. STA. = 400+15.73  
 = 59+26.08, 42.2' LT

(A) Sta. 59+09.95, 44.33' Lt.  
 (B) Sta. 59+83.13, 37.66' Lt.  
 (C) Sta. 59+48.32, 46.90' Rt.  
 (D) Sta. 60+20.61, 41.52' Rt.

**CURVE 2**  
 PI STA. = 400+45.46 =  
 = 59+55.00, 39.8' LT  
 $\Delta = 0^\circ 36' 11''$  (RT)  
 $D = 1^\circ 00' 52''$   
 $R = 5,647.93'$   
 $T = 29.73'$   
 $L = 59.45'$   
 $E = 0.08'$   
 P.C. STA. = 400+15.73 =  
 = 59+26.08, 42.2' LT  
 P.T. STA. = 400+75.19 =  
 = 59+83.97, 37.6' LT

**CURVE 3**  
 PI STA. = 300+35.34 =  
 = 59+83.54, 40.0' RT  
 $\Delta = 15^\circ 02' 05''$  (RT)  
 $D = 21^\circ 23' 32''$   
 $R = 267.83'$   
 $T = 35.34'$   
 $L = 70.28'$   
 $E = 2.32'$   
 P.C. STA. = 300+00.00 =  
 = 59+47.96, 47.0' RT  
 P.T. STA. = 300+70.28 =  
 = 60+19.74, 41.5' RT



- Notes:**
1. Work this sheet with sheets S10 thru S13.
  2. For Slab Bottom Reinforcement see sheet S10.
  3. For Parapet details, Sections K-K and L-L and Details 1 and 4 see sheet S12.
  4. For Sections E-E thru G-G and Bill of Materials see sheet S13.
  5. For Deck Cross Section and Sections A-A thru D-D see sheet S11.
  6. Bars indicated thus 2 x 3-#5 etc. indicates 2 lines of bars with 3 lengths per line.
  7. For Light Pole details see sheet 17.
  8. For Details 2 and 3 see sheet S11.

- (1) Floor Drain Sta. 59+50.97, 2.3' Lt.
- (2) Floor Drain Sta. 59+85.36, 2.3' Lt.
- (3) Floor Drain Sta. 59+60.97, 42.6' Rt.
- (4) Floor Drain Sta. 59+95.00, 39.2' Rt.

**SLAB TOP REINFORCEMENT**

\* Cut in field to fit  
 \*\* Measured perpendicular to the Deerfield Road

FILE NAME = ...049088-089-Slab Top Reinforcement.dgn	DESIGNED EV	REVISED -	 600 WEST FULTON STREET CHICAGO, ILLINOIS 60611-1229 TEL 312 454 8100 FAX 312 559 1217 WEB www.sepstein.com	<b>STATE OF ILLINOIS</b> <b>DEPARTMENT OF TRANSPORTATION</b>	<b>BRIDGE SLAB TOP REINFORCEMENT</b> <b>SN. 049-0088</b> SHEET NO. S9 OF S22 SHEETS	F.A.U. RTE. 1257	SECTION 104RB-R	COUNTY LAKE	TOTAL SHEETS 54	SHEET NO. 28
PLOT TIME = 9/4/2011 11:31 AM	CHECKED PC	REVISED -				CONTRACT NO. 62102				
PLOT DATE = 6/23/2011	DATE 06 24 2011	REVISED -				ILLINOIS FED. AID PROJECT				