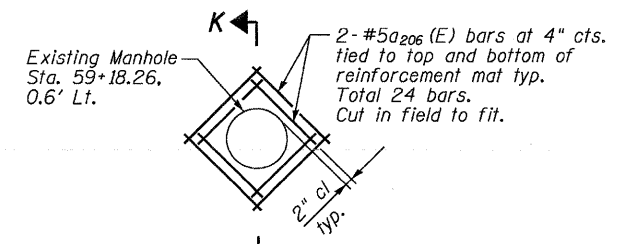
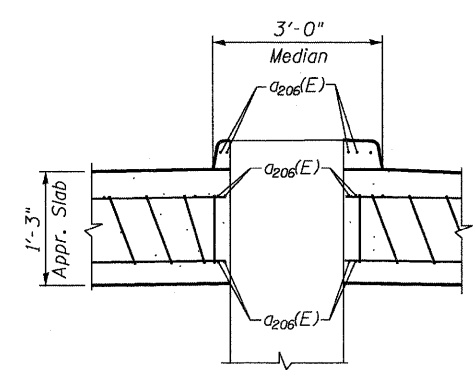


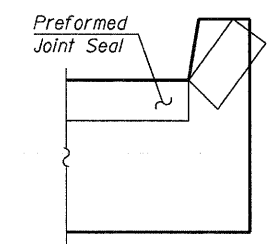
- ① Sta. 58+75.71 50.40' Lt.
- ② Sta. 58+79.30 49.50' Lt.
- ③ Sta. 58+87.13 47.73' Lt.
- ④ Sta. 59+16.37 51.98' Rt.
- ⑤ Sta. 59+19.57 51.32' Rt.
- ⑥ Sta. 59+26.76 50.17' Rt.
- ⑦ Sta. 59+09.95 44.33' Lt.
- ⑧ Sta. 59+48.32 46.90' Rt.



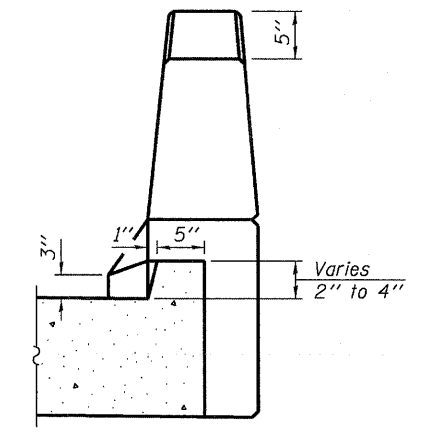
DETAIL 1
Proposed Median to be modified to accommodate existing Manhole



SECTION K-K
Cut longitudinal reinforcement, adjust standard median and slab reinforcement to clear Manhole



VIEW F-F
Angle Preformed Joint Seal at 45° at curbs when req'd for drainage.



VIEW B-B

MINIMUM BAR LAP

- #4 bar = 1'-10"
- #5 bar = 2'-0"
- #9 bar = 5'-3"

Notes:

1. See sheet S15 for Sections C-C, D-D, G-G and View E-E.
2. See sheet S16 for Section J-J, Detail A and Preformed Joint Seal.
3. a200(E) thru a202(E) and a205(E) bars spacings measured along Local Tangent.
4. Bars indicated thus 2 x 3-#5 etc. indicates 2 lines of bars with 3 lengths per line.
5. For Bar Splicer details see sheet S21.

* Tilt #9 b102(E), b203(E) and b204(E) bars as required to maintain clearance.
 ** Space between a200(E), typ. each parapet.
 *** Cut in field
 **** Measured perpendicular to the ϕ Deerfield Road.

6/23/2011 2:46:02 PM P:\Projects\1000010279\CADD\CADD\Structural\0490088-014-WApprSlab1.dgn

FILE NAME =	DESIGNED EV	REVISED -
...0490088-014-WApprSlab1.dgn	DRAWN EV	REVISED -
PLOT TIME = 2:46:02 PM	CHECKED PC	REVISED -
PLOT DATE = 6/23/2011	DATE 06 24 2011	REVISED -

SEPSTEIN
 800 WEST FULTON STREET
 CHICAGO, ILLINOIS 60611-1239
 TEL 312.454.9100
 FAX 312.588.1217
 WEB www.sepsteingroup.com

STATE OF ILLINOIS
DEPARTMENT OF TRANSPORTATION

WEST BRIDGE APPROACH SLAB
STRUCTURE NO. 049-0088
 SHEET NO. S14 OF S22 SHEETS

F.A.U. RTE.	SECTION	COUNTY	TOTAL SHEETS	SHEET NO.
1257	104RB-R	LAKE	54	33
			CONTRACT NO. 62102	
ILLINOIS FED. AID PROJECT				