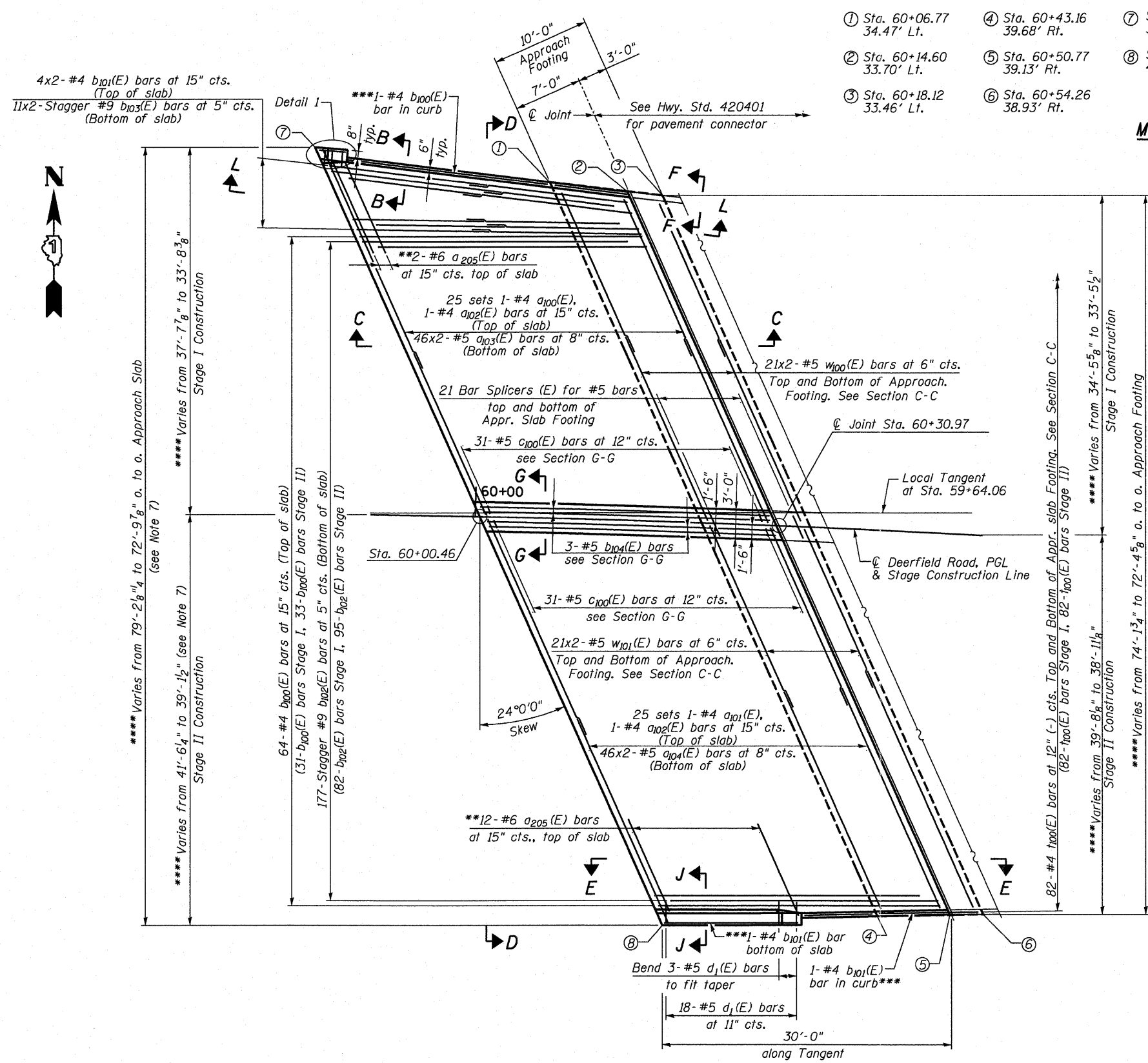
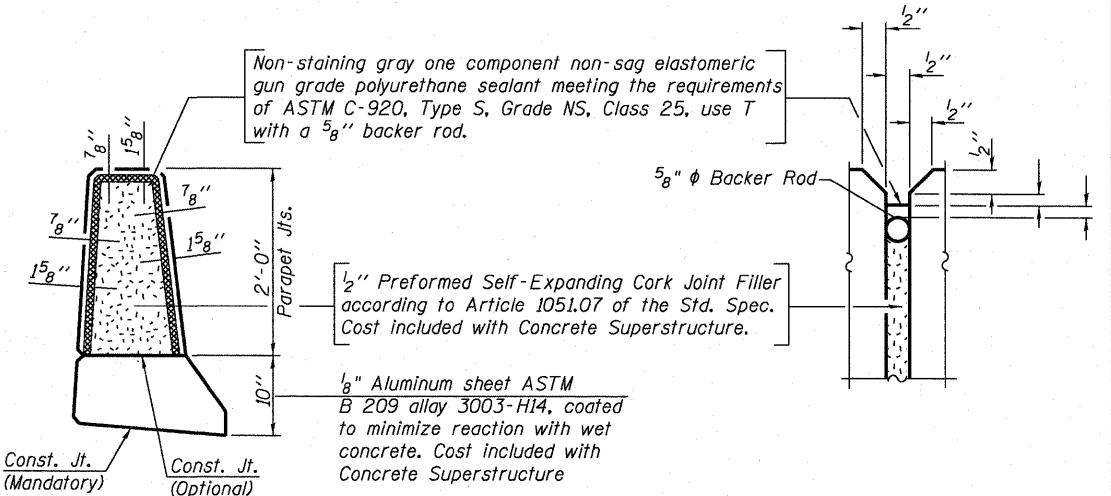
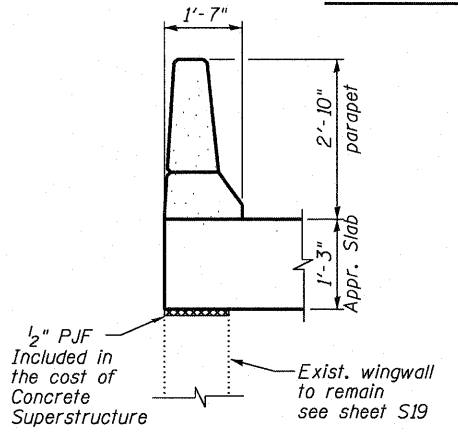
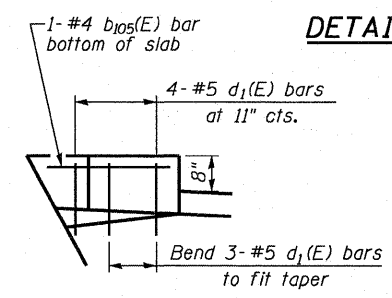
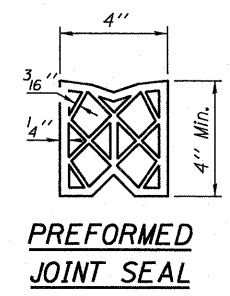
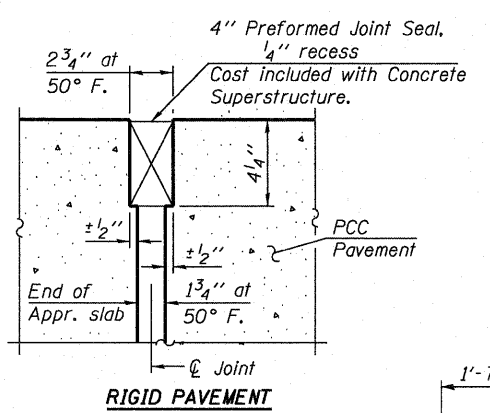


4:40:44 PM P:\Projects\100001\0273\CADD\CADD Sheets\Structural\0490088-016-EApprSlab1.dgn
 8/9/2011



- ① Sta. 60+06.77 34.47' Lt.
- ② Sta. 60+14.60 33.70' Lt.
- ③ Sta. 60+18.12 33.46' Lt.
- ④ Sta. 60+43.16 39.68' Rt.
- ⑤ Sta. 60+50.77 39.13' Rt.
- ⑥ Sta. 60+54.26 38.93' Rt.
- ⑦ Sta. 59+83.13 37.66' Lt.
- ⑧ Sta. 60+20.61 41.52' Rt.

MINIMUM BAR LAP
 #4 bar = 1'-10"
 #5 bar = 2'-0"
 #9 bar = 5'-3"



PARAPET JOINT DETAILS
 see sheets S15 and S17 for location

- Notes:
- See sheet S17 for Sections C-C, D-D and Views E-E and L-L.
 - See sheet S14 for Views B-B and F-F.
 - a₁₀₀(E) thru a₁₀₂(E) bar spacings measured along Local Tangent.
 - Bars indicated thus 2 x 3-#5 etc. indicates 2 lines of bars with 3 lengths per line.
 - For Section G-G see sheet S15.
 - For Bar Splicer details see sheet S21.

PLAN

- * Tilt #9 b₁₀₂(E) and b₁₀₃(E) bars as required to maintain clearance.
- ** Splice between a₁₀₂(E) bars, typ. each parapet
- *** Cut in field
- **** Measured perpendicular to the \hat{C} Deerfield Road.

FILE NAME = ... \0490088-016-EApprSlab1.dgn	DESIGNED EV	REVISED -		STATE OF ILLINOIS DEPARTMENT OF TRANSPORTATION	EAST BRIDGE APPROACH SLAB STRUCTURE NO. 049-0088	F.A.U. RTE. 1257	SECTION 104RB-R	COUNTY LAKE	TOTAL SHEETS 54	SHEET NO. 35		
PLOT TIME = 4:40:44 PM	DRAWN EV	REVISED -				SHEET NO. S16 OF S22 SHEETS			CONTRACT NO. 62102		ILLINOIS FED. AID PROJECT	
PLOT DATE = 8/9/2011	CHECKED PC	REVISED -										