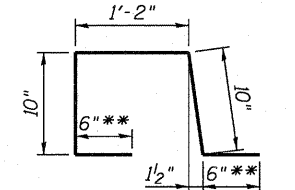
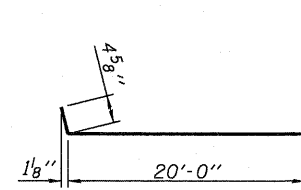
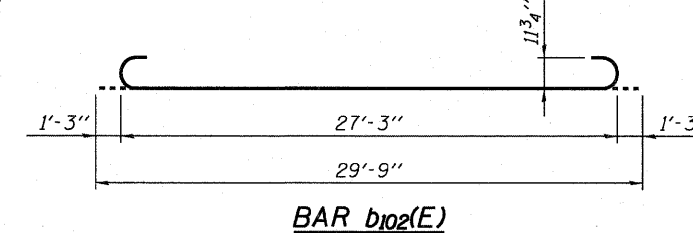
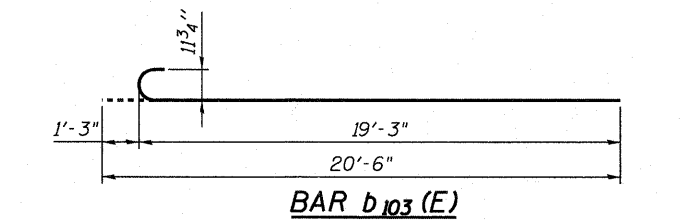
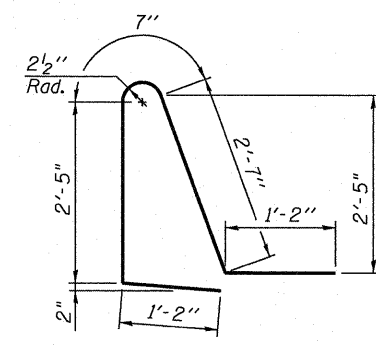
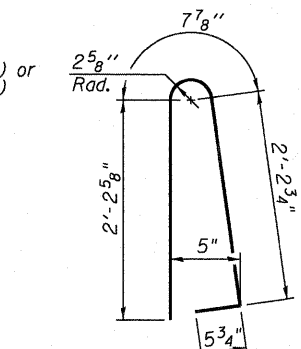


**EAST APPROACH SLAB
BILL OF MATERIAL**

Bar	No.	Size	Length	Shape
a ₁₀₀ (E)	25	#4	22'-2"	—
a ₁₀₁ (E)	25	#4	26'-8"	—
a ₁₀₂ (E)	50	#4	20'-5"	—
a ₁₀₃ (E)	92	#5	21'-7"	—
a ₁₀₄ (E)	92	#5	23'-10"	—
a ₂₀₅ (E)	14	#6	6'-6"	—
b ₁₀₀ (E)	65	#4	29'-8"	—
b ₁₀₁ (E)	10	#4	17'-1"	—
b ₁₀₂ (E)	177	#9	29'-9"	—
b ₁₀₃ (E)	22	#9	20'-6"	—
b ₁₀₄ (E)	6	#5	29'-8"	—
b ₁₀₅ (E)	1	#4	2'-2"	—
c ₁₀₀ (E)	62	#5	3'-10"	—
d(E)	22	#5	5'-7"	—
d ₁ (E)	22	#5	7'-11"	—
e ₁₀₀ (E)	8	#4	2'-3"	—
e ₁₀₁ (E)	1	#8	2'-3"	—
e ₁₀₂ (E)	8	#4	14'-9"	—
e ₁₀₃ (E)	1	#8	14'-9"	—
f ₁₀₀ (E)	164	#4	10'-9"	—
w ₁₀₀ (E)	84	#5	21'-1"	—
w ₁₀₁ (E)	84	#5	23'-3"	—
Concrete Structures			Cu. Yd.	26
Concrete Superstructure			Cu. Yd.	114
Bridge Deck Grooving			Sq. Yd.	228
Protective Coat			Sq. Yd.	267
Reinforcement Bars, Epoxy Coated			Pound	32,780



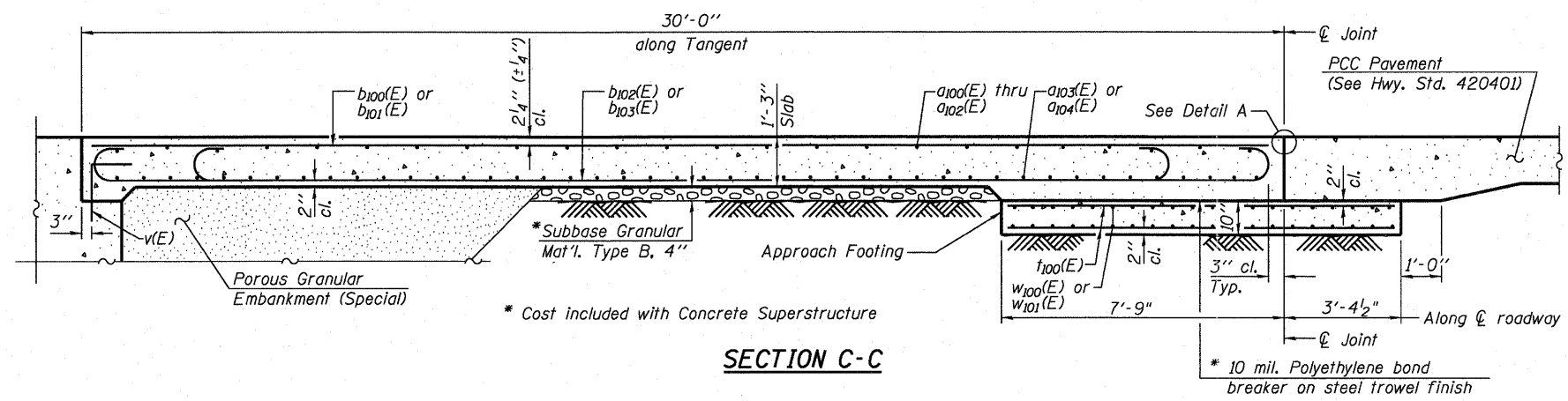
**In lieu of bottom leg, c(E) bars may be cored and set according to Article 509.06 of Standard Specifications. Cored holes shall be roughened or scored per manufacturer's recommendations. Maximum depth of cored hole shall not exceed 6".



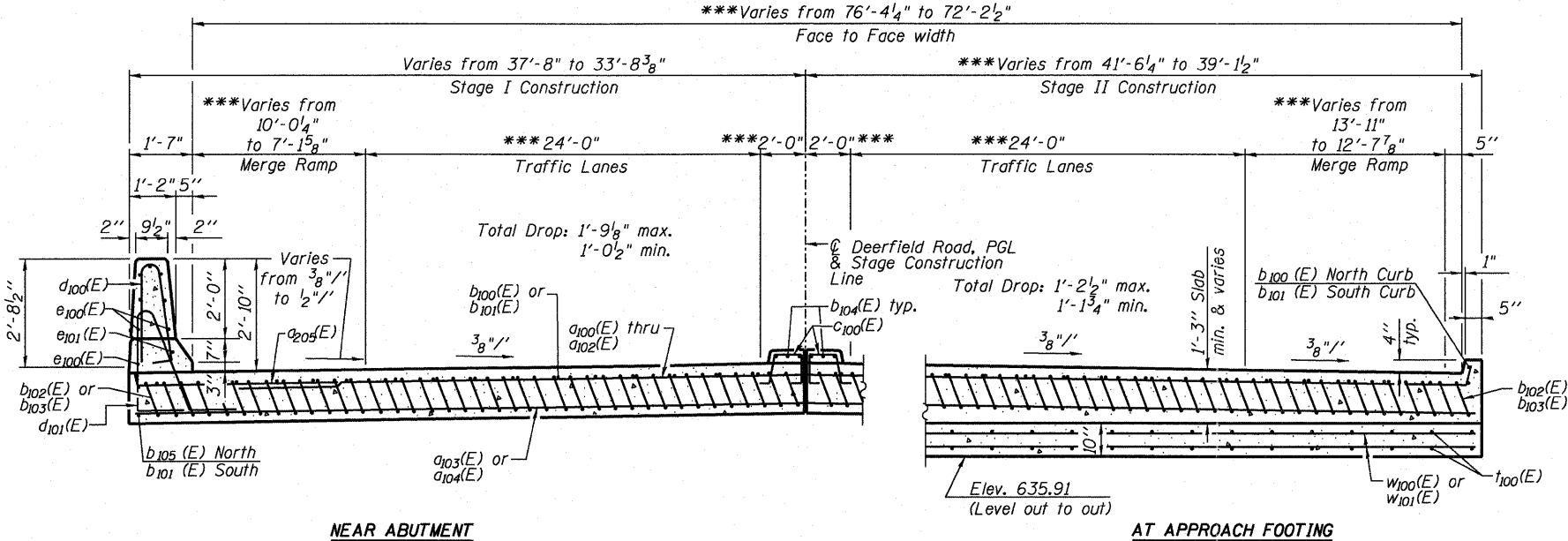
BAR d(E)

BAR d1(E)

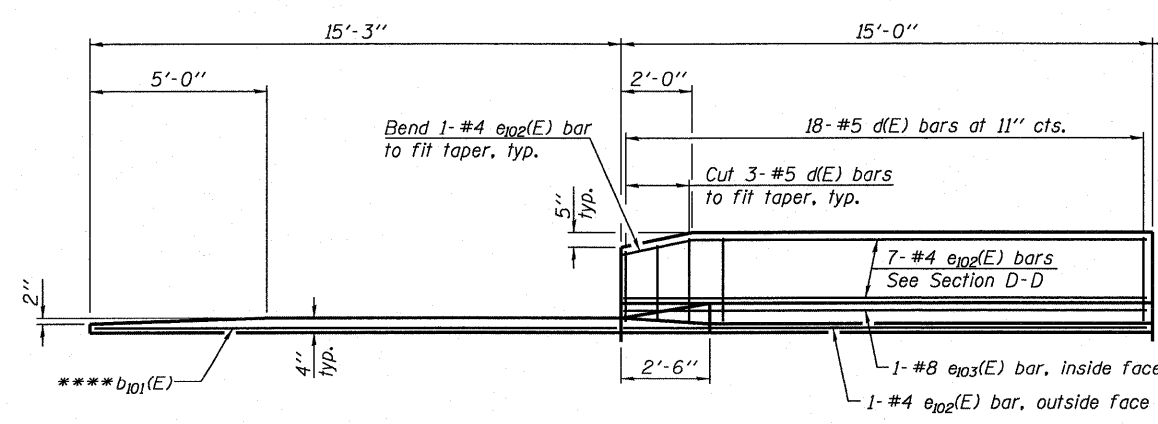
- Notes:
1. For Detail A see sheet S16.
 2. For location of Sections C-C, D-D and views E-E and L-L see sheet S16.
 3. Approach slab and parapet concrete shall be paid for as Concrete Superstructure.
 4. Approach footing concrete shall be paid for as Concrete Structures.
 5. Reinforcement shall be paid for as Reinforcement Bars, Epoxy Coated.
 6. The approach footing maximum applied service bearing pressure (Q_{max}) = 2.0 ksf.
 7. Cost of excavation for approach footing included with Concrete Structures.
 8. For Porous Granular Embankment (Special) see sheet S18.
 9. For v(E) bar details see sheet S9.



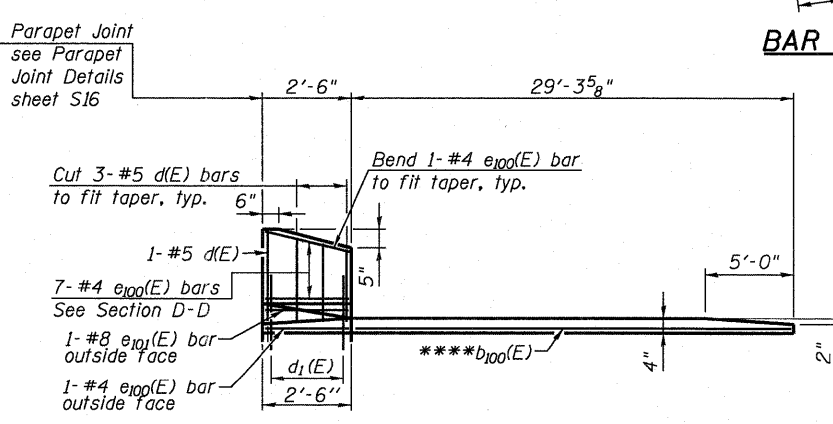
SECTION C-C



SECTION D-D



VIEW E-E



VIEW L-L

8/9/2011 4:42:54 PM P:\Projects\100001\0273\CAD\CADD Sheets\Structural\0490088-017-EApprSlab2.dgn

FILE NAME : ... \0490088-017-EApprSlab2.dgn	DESIGNED EV	REVISED -	<p>800 WEST FULTON STREET CHICAGO, ILLINOIS 60611-1259</p> <p>TEL. 312 454 9100 FAX 312 559 1217 WWW.WWWSepstein.com</p>	<p>STATE OF ILLINOIS DEPARTMENT OF TRANSPORTATION</p>	<p>EAST BRIDGE APPROACH SLAB DETAILS STRUCTURE NO. 049-0088</p> <p>SHEET NO. S17 OF S22 SHEETS</p>	F.A.U. RTE. 1257	SECTION 104RB-R	COUNTY LAKE	TOTAL SHEETS 54	SHEET NO. 36
PLOT TIME = 4:42:54 PM	DRAWN EV	REVISED -				CONTRACT NO. 62102		ILLINOIS FED. AID PROJECT		
PLOT DATE = 8/9/2011	CHECKED PC	REVISED -								
	DATE 08 09 2011	REVISED -								