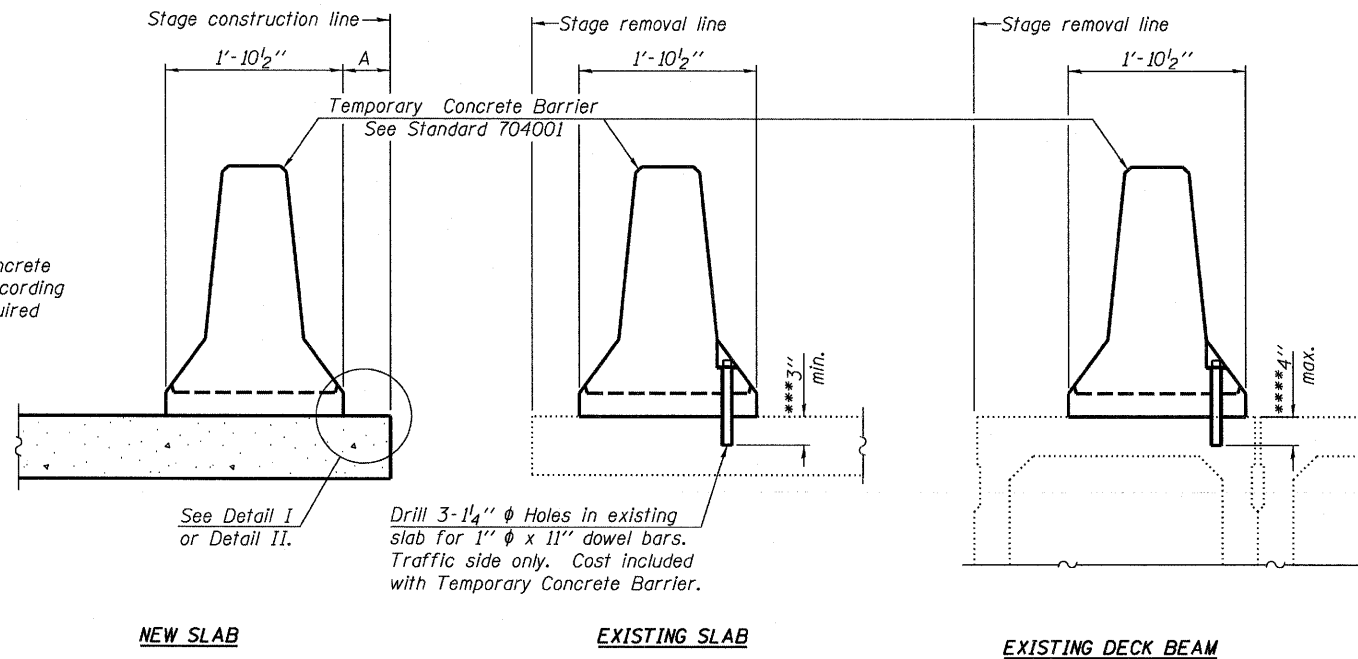


When "A" is 3'-6" or less, the temporary concrete barrier shall be anchored to the new slab according to Detail I or Detail II. No anchorage is required when "A" is greater than 3'-6".



Drill 3-1/4"  $\phi$  Holes in existing slab for 1"  $\phi$  x 11" dowel bars. Traffic side only. Cost included with Temporary Concrete Barrier.

**NOTES**

Detail I - With Bar Splicer or Couplers:  
Connect one (1) 1"x7"x10" steel  $\bar{L}$  to the top layer of couplers with 2-5/8"  $\phi$  bolts screwed to coupler at approximate  $\bar{C}$  of each barrier panel.

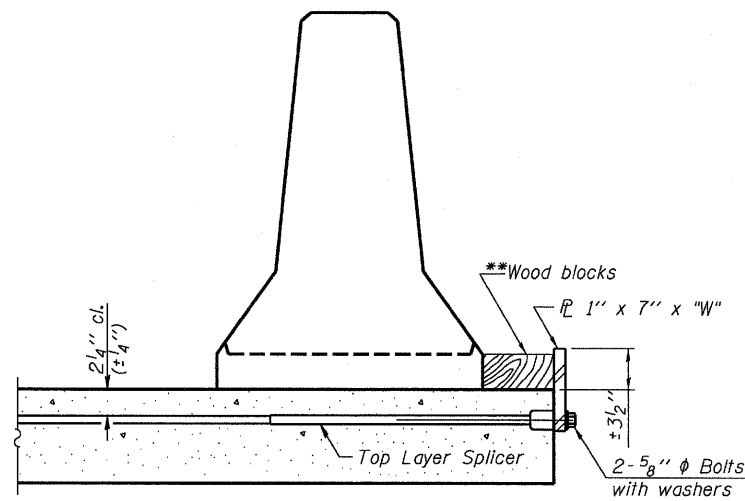
Detail II - With Extended Reinforcement Bars:  
Connect one (1) 1"x7"x10" steel  $\bar{L}$  to the concrete slab or concrete wearing surface with 2-5/8"  $\phi$  Expansion Anchors or cast in place inserts spaced between the top layer of reinforcement at approximate  $\bar{C}$  of each barrier panel.

Cost of anchorage is included with Temporary Concrete Barrier. The 1" x 7" x 10" plate shall not be removed until stage II construction forms and all reinforcement bars are in place and the concrete is ready to be placed.

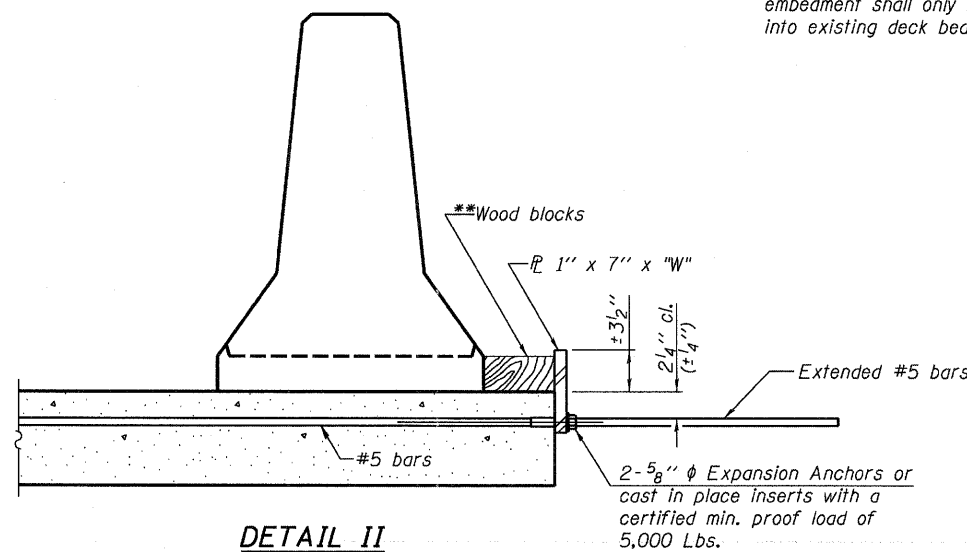
**SECTIONS THRU SLAB OR DECK BEAM**

\*\*\* Dimension shown is minimum required embedment into concrete. If hot-mix asphalt wearing surface is present, minimum embedment shall be in addition to wearing surface depth.

\*\*\*\* If existing deck beam is to remain in place after stage construction, embedment shall only be into wearing surface and not into existing deck beam concrete.



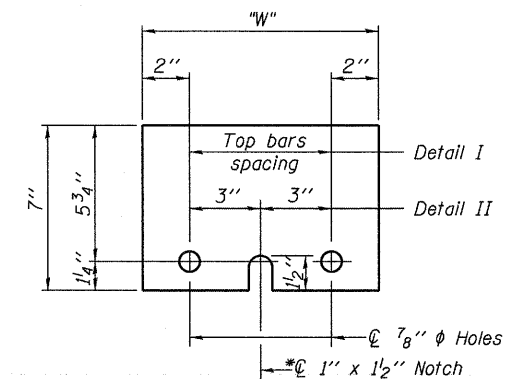
**DETAIL I**



**DETAIL II**

\*\* Wood blocks may be omitted when required to provide minimum stage traffic lane width. When the wood blocks are omitted, the concrete barrier shall be in direct contact with the steel retainer plate.

"W" = Top bars spacing + 4"



**STEEL RETAINER  $\bar{L}$  1" x 7" x 10"**

\* Required only with Detail II

6/23/2011 9:50:07 AM P:\Projects\1000011073\CAD\CADD Sheets\Structural\049008-022-Temp\_conc\_barrier.dgn

FILE NAME =	DESIGNED EV	REVISED -
...\\049008-022-Temp_conc_barrier.dgn	DRAWN EV	REVISED -
PLOT TIME = 9:50:07 AM	CHECKED PC	REVISED -
PLOT DATE = 6/23/2011	DATE 06 24 2011	REVISED -

DESIGNED EV	REVISED -
DRAWN EV	REVISED -
CHECKED PC	REVISED -
DATE 06 24 2011	REVISED -

**SEPSTEIN**  
800 WEST FULTON STREET  
CHICAGO, ILLINOIS 60611-1209  
TEL 312 464 8100  
FAX 312 559 1217  
WEB www.sepstein.com

**STATE OF ILLINOIS  
DEPARTMENT OF TRANSPORTATION**

**TEMPORARY CONCRETE BARRIER  
STRUCTURE NO. 049-0088**

SHEET NO. S22 OF S22 SHEETS

F.A.U. RTE.	SECTION	COUNTY	TOTAL SHEETS	SHEET NO.
1257	104RB-R	LAKE	54	41
			CONTRACT NO. 62102	
ILLINOIS FED. AID PROJECT				