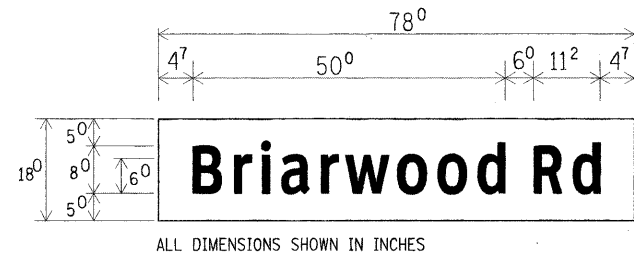
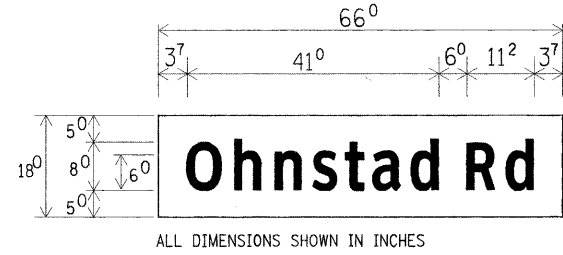


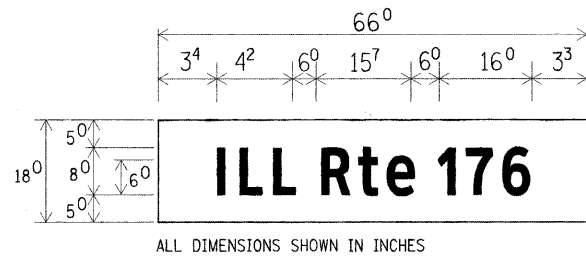
PANEL SIGN DESIGN



9.75 SQ. FT. EACH
2 REQUIRED
TYPE 1
TYPE 2
DESIGN SERIES D



8.25 SQ. FT. EACH
2 REQUIRED
TYPE 1
TYPE 2
DESIGN SERIES D



8.25 SQ. FT. EACH
2 REQUIRED
TYPE 1
TYPE 2
DESIGN SERIES D

GENERAL NOTES

- 1. WHERE MAST ARM MOUNTED STREET NAME SIGNS ARE SPECIFIED, THE MAST ARM ASSEMBLY AND POLES SHALL BE DESIGNED TO SUPPORT THE LOADINGS CALLED FOR ON STANDARDS 877001, 877002, 877006, 877011 AND 877012, AS APPLICABLE, PLUS TWO (2) SIGN PANELS 2'-6" x 8'-0" MOUNTED AS SHOWN. THE DESIGN SHALL BE IN ACCORDANCE WITH THE REQUIREMENTS OF THE CURRENT "STANDARD SPECIFICATIONS FOR STRUCTURAL SUPPORTS FOR HIGHWAY SIGNS, LUMINAIRES, AND TRAFFIC SIGNALS" AS PUBLISHED BY THE AMERICAN ASSOCIATION OF STATE HIGHWAY AND TRANSPORTATION OFFICIALS FOR 80 M.P.H. WIND VELOCITY.
- 2. ALL SIGNS SHALL HAVE A WHITE REFLECTORIZED LEGEND AND BORDER ON A GREEN REFLECTORIZED BACKGROUND, TYPE A SHEETING.
- 3. THE SIGN LENGTH SHOULD BE INCREASED IN 6-INCH INCREMENTS, BUT THE OVERALL LENGTH SHOULD NOT EXCEED 8'-0".
- 4. ALL BORDERS SHALL BE 3/4" WIDE AND CORNER RADIUS SHALL BE 2-1/4".
- 5. SIGNFIX ALUMINUM CHANNEL FRAMING SYSTEM SHALL BE USED FOR ALL SIGNS ATTACHED TO SIGNAL POLES AND POSTS. LOCAL SUPPLIERS OF THE SIGNFIX ALUMINUM CHANNEL FRAMING SYSTEM ARE:

* J.O. HERBERT CO. MIDLOTHIAN, VA.

* WESTERN REMAC INC. WOODRIDGE, IL.

PARTS LISTING:
SIGN CHANNEL PART #HPN053 (MED. CHANNEL)
SIGN SCREWS 1/4" x 14 x 1" H.W.H. #3
SELF TAPPING WITH NEOPRENE WASHER
BRACKETS PART #HPN034 (UNIVERSAL)
CHANNEL CLAMPS WITH STAINLESS STEEL STRAPPING

OTHER BRANDS OF MOUNTING HARDWARE ARE ACCEPTABLE, BASED UPON THE DEPARTMENT'S APPROVAL AND COMPATIBILITY WITH THE CHANNEL/BRACKET OF THE ABOVE PRODUCT.

SUPPORTING CHANNELS

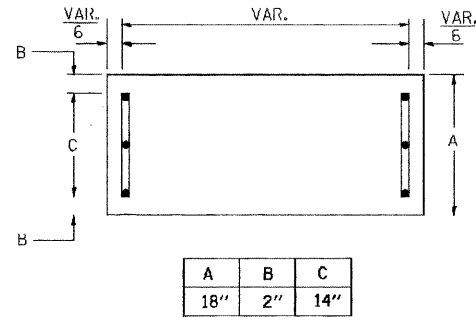
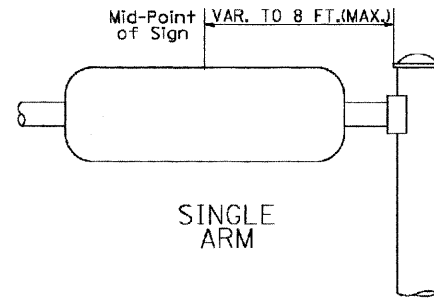


Table with 3 columns: A (18"), B (2"), C (14")



SUPPORTING CHANNELS

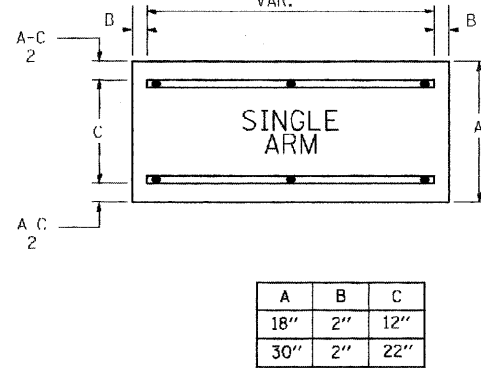
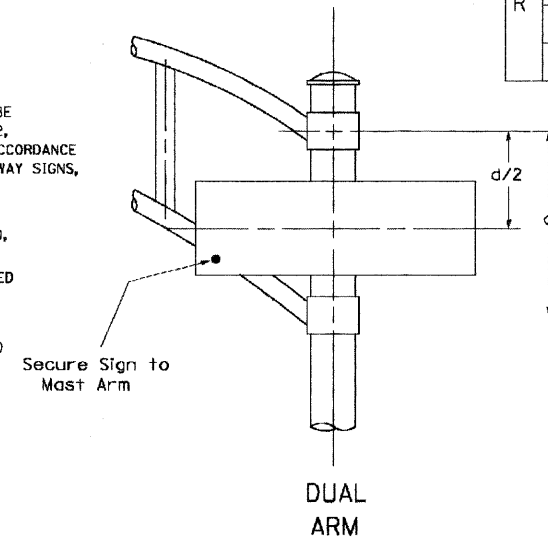


Table with 3 columns: A (30"), B (2"), C (22")



DUAL ARM

SIGNFIX ALUMINUM CHANNEL FRAMING SYSTEM shall be used. See Note #5.

Upper Case To Lower Case
Spacing Chart 8-6 Inch Series "C & D"

Spacing chart for Upper Case To Lower Case, 8-6 Inch Series "C & D". Includes columns for First Letter and Second Letter (a-z).

Lower Case To Lower Case
Spacing Chart 6 Inch Series "C & D"

Spacing chart for Lower Case To Lower Case, 6 Inch Series "C & D". Includes columns for First Letter and Second Letter (a-z).

Number To Number
Spacing Chart 8 Inch Series "C & D"

Spacing chart for Number To Number, 8 Inch Series "C & D". Includes columns for First Number and Second Number (0-9).

EXAMPLE, 2 DENOTES 3/8"

UPPER AND LOWER CASE
LETTER WIDTHS

Table showing letter widths for 6 inch upper and lower case letters, and 8 inch upper case letters. Includes columns for Letter Series and Letter Widths.

Table showing letter widths for 6 inch and 8 inch series. Includes columns for Number Series and Letter Widths.