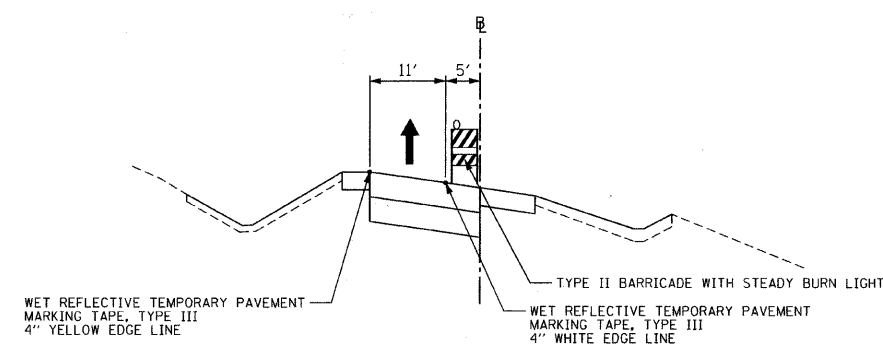
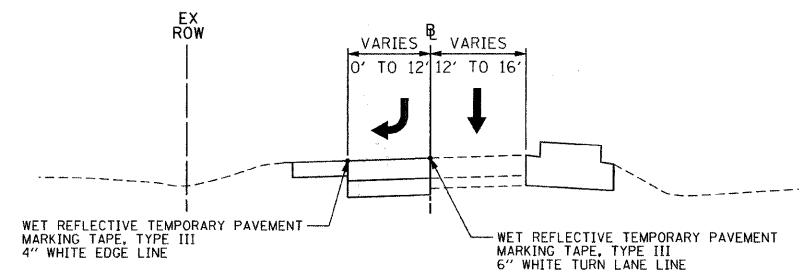
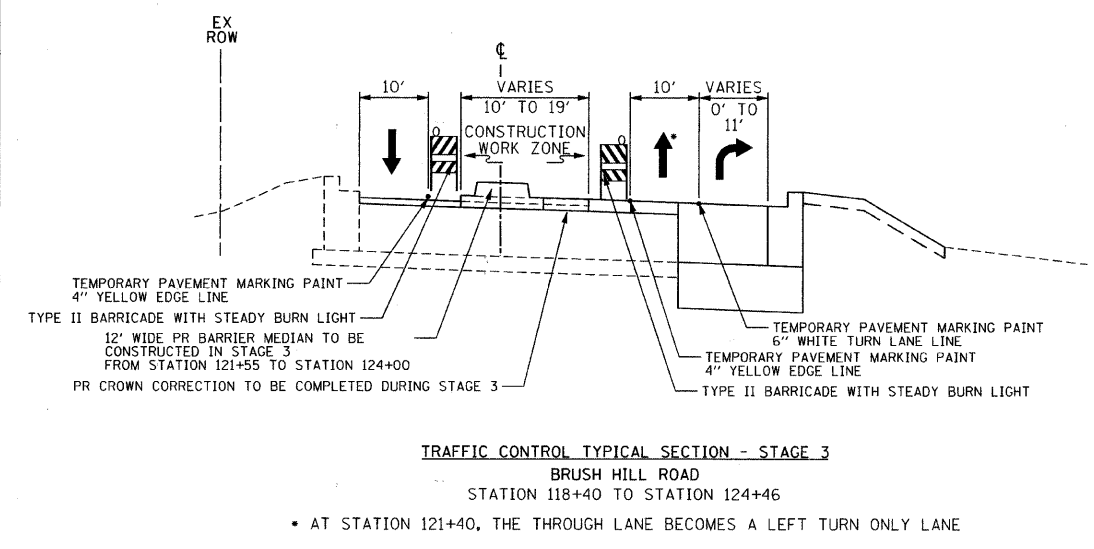
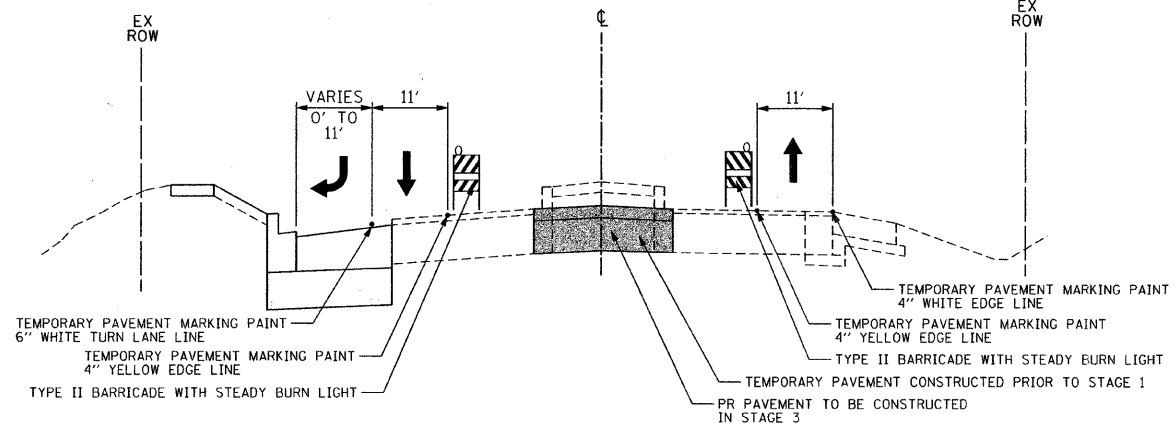
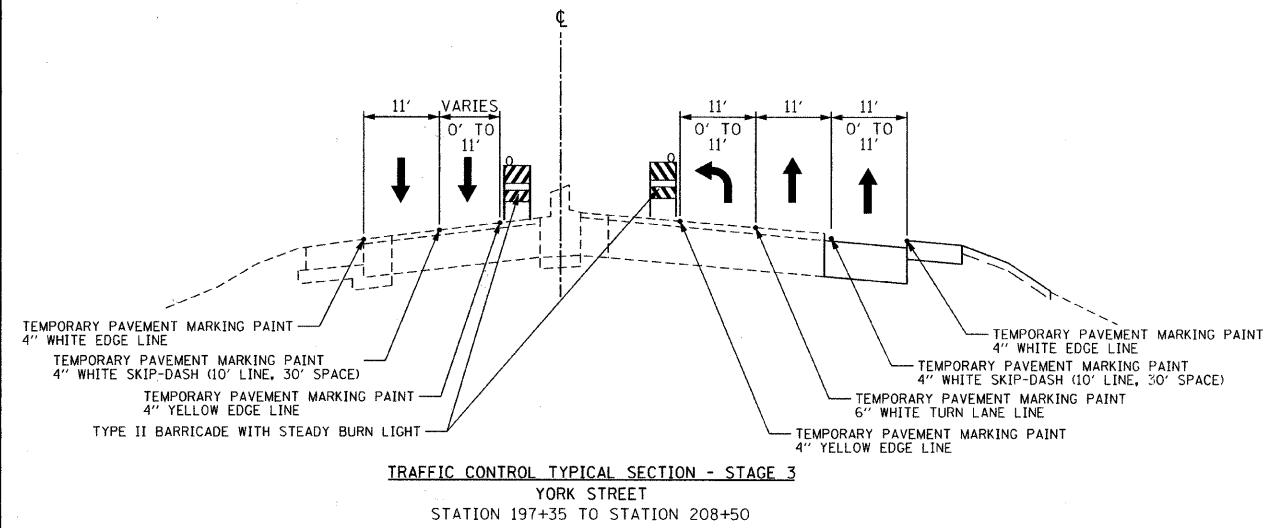


DATE	
BY	
SURVEYED	
PLOTTED	
CHECKED	
BY	
NOTE BOOK	
NO.	
PAID FILE NAME	

DATE	
BY	
SURVEYED	
PLOTTED	
CHECKED	
BY	
NOTE BOOK	
NO.	
STRUCTURE NOTATIONS	
CHRD	



- STAGE 3**
1. USE TRAFFIC CONTROL STAGE 3 PLANS (SEE SHEET NO. 23 AND 24).
 2. ESTABLISH TWO-WAY TRAFFIC FLOW ALONG THE OUTSIDE EDGES OF PAVEMENT OF YORK STREET. MAINTAIN A MINIMUM OF ONE 11' THROUGH LANE IN EACH DIRECTION THROUGHOUT THE ENTIRE LENGTH. PROVIDE A SOUTHBOUND RIGHT TURN LANE AT THE INTERSECTION WITH BRUSH HILL ROAD AS SHOWN ON THE STAGING PLANS.
 3. ESTABLISH TWO-WAY TRAFFIC FLOW ALONG THE OUTSIDE EDGES OF PAVEMENT OF BRUSH HILL ROAD. MAINTAIN A MINIMUM OF ONE 10' THROUGH LANE IN EACH DIRECTION THROUGHOUT THE ENTIRE LENGTH. THE CURRENT LEFT TURN LANE TO THE ELMHURST MEMORIAL HOSPITAL WILL BE CLOSED, BUT THE DRIVEWAY SHALL REMAIN OPEN AT ALL TIMES.
 4. ESTABLISH ONE-WAY TRAFFIC FLOW ALONG THE ILLINOIS ROUTE 38 EXIT RAMP. TRAFFIC WILL BE ALIGNED IN THE PROPOSED CONFIGURATION WITH TWO 12' LANES AT THE INTERSECTION.
 5. ESTABLISH ONE-WAY TRAFFIC FLOW ALONG THE NEWLY CONSTRUCTED ILLINOIS ROUTE 38 ENTRANCE RAMP. MAINTAIN ONE 11' LANE THROUGHOUT THE ENTIRE LENGTH. ALIGN THE LANE ALONG THE LEFT EDGE OF PAVEMENT.
 6. REMOVE ALL REMAINING TEMPORARY PAVEMENT. REMOVE EXISTING PAVEMENT AND SHOULDERS AS SHOWN ON THE REMOVAL PLANS (SEE SHEET NO. 13 AND 14).
 7. CONSTRUCT PAVEMENT ALONG THE CENTERLINE OF YORK STREET AND COMPLETE CROSS SLOPE CORRECTION.
 8. CONSTRUCT BARRIER MEDIAN ALONG BRUSH HILL ROAD AND COMPLETE CROSS SLOPE CORRECTION.
 9. CONSTRUCT REMAINING SHOULDER ALONG THE ILLINOIS ROUTE 38 ENTRANCE RAMP.

- STAGE 4**
1. PLACE HMA SURFACE COURSE AND RESURFACE PAVEMENT ALONG YORK STREET AND BRUSH HILL ROAD AS SHOWN ON THE ROADWAY PLANS (SEE SHEET NO. 13 AND 14). USE THE INTERSECTION PAVING PLANS (SEE SHEET NO. 28) TO COMPLETE GRADING OF THE INTERSECTION.
 2. PLACE PERMANENT PAVEMENT MARKINGS AND SIGNS (SEE SHEET NO. 30 AND 31)
 3. COMPLETE LANDSCAPING SOUTHEAST OF THE INTERSECTION.
 4. OPEN ROADWAY TO TWO-WAY FOUR-LANE TRAFFIC FLOW.

FILE NAME = g:\ch08\0007\road\phase 2\sheet\DX0007	USER NAME = jingo\amba TypSecMOT.dgn	DESIGNED - TKH	REVISED -	STATE OF ILLINOIS DEPARTMENT OF TRANSPORTATION	SUGGESTED CONSTRUCTION PROCEDURES AND TRAFFIC CONTROL TYPICAL SECTIONS AND NOTES	F.A.U. RTE. 2678	SECTION 09-00171-00-CH	COUNTY DUPAGE	TOTAL SHEETS 85	SHEET NO. 18
PLOT SCALE = 1:8000	PLOT DATE = 8/4/2011	DRAWN - TKH	REVISED -			CONTRACT NO. 63610				
		CHECKED - JMC	REVISED -			FED. ROAD DIST. NO. 7 ILLINOIS FED. AID PROJECT				
		DATE - 7/4/2011	REVISED -							