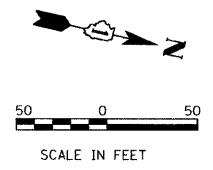
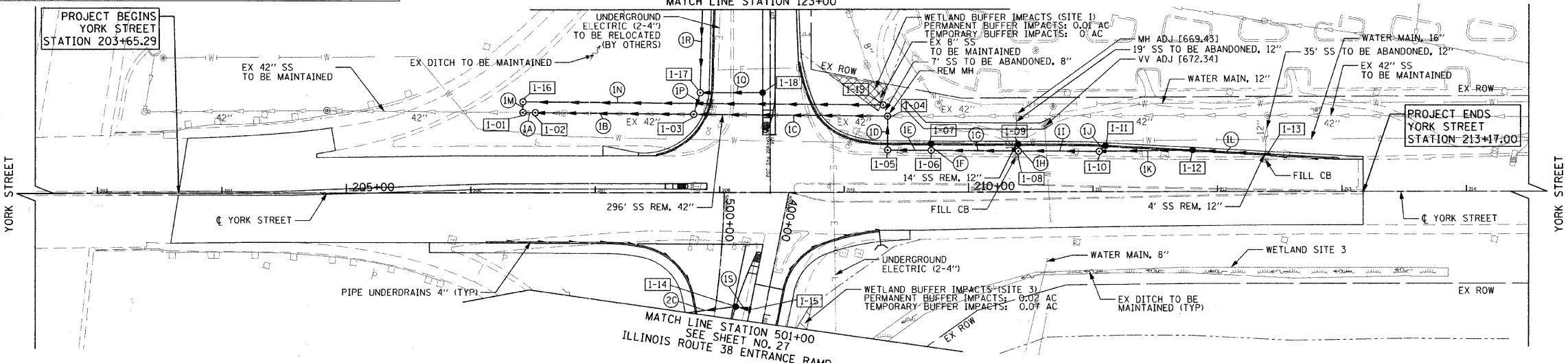


- DRAINAGE NOTES:**
1. OFFSETS AND TOP OF FRAME OR LID ELEVATIONS FOR STRUCTURES WHICH ARE LOCATED IN THE GUTTER ARE GIVEN AT THE EDGE OF PAVEMENT.
 2. OFFSETS FOR STRUCTURES NOT LOCATED IN THE GUTTER ARE GIVEN TO THE CENTER OF THE STRUCTURE. TOP OF FRAME OR LID ELEVATIONS ARE GIVEN TO THE CENTER OF THE FRAME OR LID.
 3. ANY EXISTING STORM SEWER TO BE ABANDONED SHALL BE PLUGGED WITH CLASS SI CONCRETE OR BRICK AND MORTAR AND THE COST SHALL BE INCLUDED IN THE COST OF THE PROPOSED STORM SEWER.
 4. SEE SHEET 60 FOR MANHOLE WITH RESTRICTOR PLATE DETAIL.
 5. THE ENVIRONMENTAL FIRM IS REQUIRED TO CONTINUOUSLY MONITOR FOR WORKER PROTECTION AND SOIL CONTAMINATION AT SEVERAL AREAS. SEE SPECIAL PROVISIONS AND SUPPLEMENTAL SPECIFICATIONS FOR DETAILS.

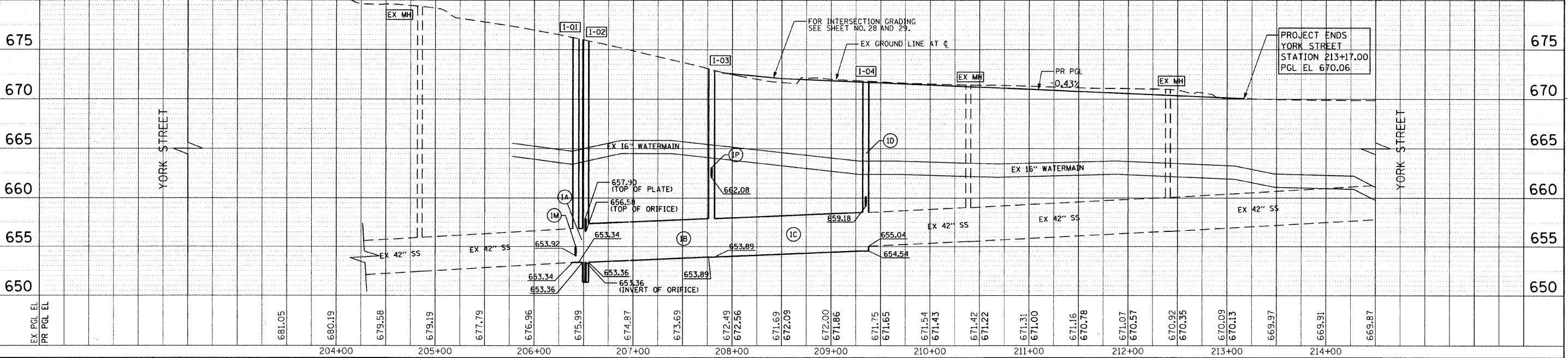


- LEGEND**
- STRUCTURE NUMBER
 - ⊗ PIPE NUMBER



STR NO.	STATION	OFFSET	TYPE	FRAME & GRATE	RIM EL	INVERT ELEVATIONS							
						NORTH	NORTHEAST	EAST	SOUTHEAST	SOUTH	SOUTHWEST	WEST	NORTHWEST
1-01	206+42.0	64.4'	LT	MH, TYPE A, 6'-DIAMETER	671.55	653.34				653.34			653.92
1-02	206+52.0	64.3'	LT	MH, TYPE A, 6'-DIAMETER	670.81	653.36				653.36			653.92
1-03	207+79.2	62.8'	LT	MH, TYPE A, 6'-DIAMETER	671.67	653.89				653.89			661.95
1-04	209+35.0	61.1'	LT	MH, TYPE A, 6'-DIAMETER	672.18	655.04			659.18	654.54			661.95
1-05	209+35.0	33.8'	LT	MH, TYPE A, 4'-DIAMETER	671.04	659.60							659.40
1-06	209+70.0	33.5'	LT	MH, TYPE A, 4'-DIAMETER	670.92	660.11				659.91			666.74
1-07	209+70.0	38.9'	LT	CB, TYPE C	670.81				666.77				666.52
1-08	210+40.0	32.9'	LT	MH, TYPE A, 4'-DIAMETER	670.71	660.97				660.77			666.52
1-09	210+40.0	38.4'	LT	CB, TYPE C	670.59				666.55				666.52
1-10	211+05.0	32.3'	LT	MH, TYPE A, 4'-DIAMETER	670.49	664.07				661.58			666.29
1-11	211+10.0	37.0'	LT	CB, TYPE C	670.38				666.34				666.29
1-12	211+80.0	33.3'	LT	CB, TYPE A, 4'-DIAMETER	670.17	664.88				664.78			666.29
1-13	212+40.0	30.3'	LT	INLETS, TYPE A	670.02					665.44			666.29
1-14	500+90.0	16.0'	LT	CB, TYPE A, 4'-DIAMETER	671.05	667.11			667.01				666.29
1-15	500+90.7	27.5'	LT	INLETS, TYPE A	670.49					667.17			666.29
1-16	206+42.0	72.9'	LT	MH, TYPE A, 4'-DIAMETER	672.39	654.14			653.94				662.18
1-17	207+84.5	80.0'	LT	MH, TYPE A, 4'-DIAMETER	670.79	665.69			662.08				662.18
1-18	208+34.6	80.0'	LT	CB, TYPE A, 4'-DIAMETER	670.75					666.17			662.18
1-19	209+31.5	69.9'	LT	MH, TYPE A, 4'-DIAMETER	674.26					655.85	655.90		662.18

PIPE NO.	STRUCTURE		DESCRIPTION	CLASS	TYPE	SIZE (IN)	LENGTH (FT)	SLOPE (%)	TBF (CU YD)
	FROM	TO							
1A	1-02	1-01	STORM SEWERS	A	3	42	4.0	0.57%	0.0
1B	1-03	1-02	STORM SEWERS	A	3	48	121.2	0.43%	0.0
1C	1-04	1-03	STORM SEWERS	A	3	48	149.8	0.43%	362.6
1D	1-05	1-04	STORM SEWERS	WM REO		12	22.3	1.00%	12.3
1E	1-06	1-05	STORM SEWERS	WM REO		12	31.0	1.00%	35.7
1F	1-07	1-06	STORM SEWERS	WM REO		12	3.4	1.00%	0.4
1G	1-08	1-05	STORM SEWERS	WM REO		12	66.0	1.00%	54.7
1H	1-09	1-08	STORM SEWERS	WM REO		12	3.5	1.00%	0.6
1I	1-10	1-08	STORM SEWERS	WM REO		12	61.0	1.00%	67.3
1J	1-11	1-10	STORM SEWERS	WM REO		12	4.8	1.00%	0.7
1K	1-12	1-10	STORM SEWERS	WM REO		12	71.0	1.00%	36.5
1L	1-13	1-12	STORM SEWERS	WM REO		12	56.1	1.00%	20.1
1M	1-16	1-01	STORM SEWERS	A	3	12	3.5	0.60%	0.0
1N	1-19	1-16	STORM SEWERS	A	3	12	285.5	0.60%	228.3
1O			NOT USED						
1P	1-17	1-03	STORM SEWERS	A	2	12	13.0	1.00%	0.0
1Q	1-18	1-17	STORM SEWERS	A	2	12	48.2	1.00%	15.5
1R	2-03	1-17	STORM SEWERS	A	3	12	117.5	1.00%	0.0
1S	1-15	1-14	STORM SEWERS	A	1	12	5.6	1.00%	0.3



FILE NAME = g:\ch08\0007\road\phase 2\sheet\DI1X0007	USER NAME = jmgolemba	DESIGNED - ESN	REVISED -	STATE OF ILLINOIS DEPARTMENT OF TRANSPORTATION	F.A.U. RFE. 2678	SECTION 09-00171-00-CH	COUNTY DuPAGE	TOTAL SHEETS 85	SHEET NO. 26
PLOT SCALE = 5/8"=1'-0"	CHECKED - JMG	DATE - 7/4/2011	REVISIONS	SCALE: HORIZ: 1"=50' VERT: 1"=5'	YORK STREET AT IL RTE 38 RAMPS/BRUSH HILL ROAD DRAINAGE AND UTILITY PLAN AND PROFILE		CONTRACT NO. 63610		FED. ROAD DIST. NO. 7 ILLINOIS FED. AID PROJECT

DATE	BY	DATE	BY

DATE	BY	DATE	BY

TranSystems
1475 E WOODFIELD ROAD, SUITE 600
SCHAMBOURG, IL 60173