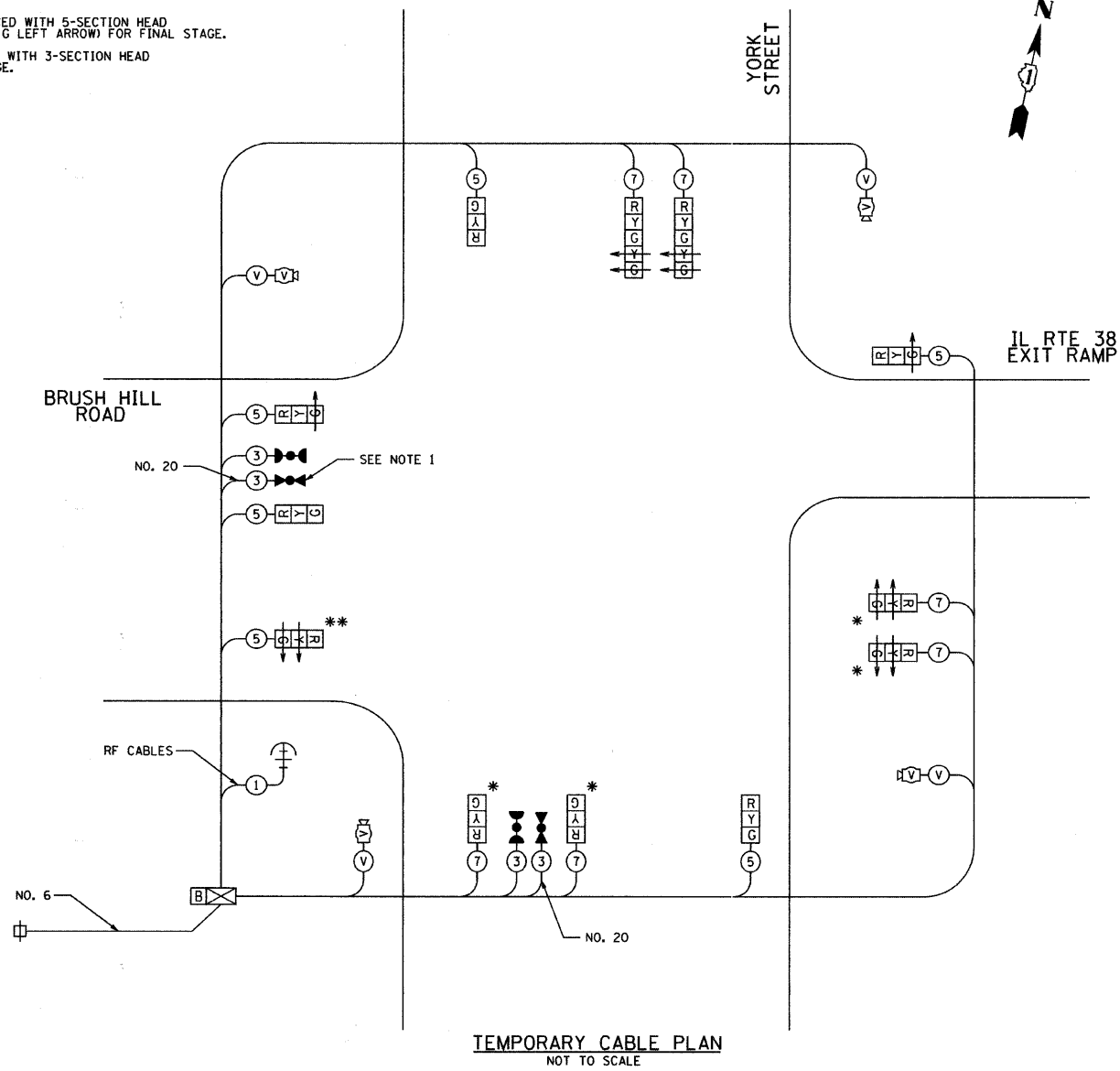


DATE	
BY	
PLAN	
NO.	
DATE	
BY	
PROFILE	
NO.	

DATE	
BY	
PROFILE	
NO.	

- * THESE HEADS SHALL BE REPLACED WITH 5-SECTION HEAD (R, Y, G BALL, Y LEFT ARROW, G LEFT ARROW) FOR FINAL STAGE.
- ** THIS HEAD SHALL BE REPLACED WITH 3-SECTION HEAD (R, Y, G BALL) FOR FINAL STAGE.



TEMPORARY CABLE PLAN
NOT TO SCALE

NOTE 1: THE LIGHT DETECTOR SHALL PROVIDE SEPARATE DIRECTIONS OF DETECTION TO ACCOMMODATE THE EMERGENCY VEHICLE PREEMPTION SEQUENCES FOR ALL CONSTRUCTION STAGES.

M.O.T. FINAL STAGE

I.D.O.T. TRAFFIC SIGNAL INSTALLATION ELECTRICAL SERVICE REQUIREMENTS					TOTAL WATTAGE
TYPE	NO. LAMPS	x WATTAGE		x % OPERATION	
		INCAND.	LED		
SIGNAL (RED)	12	135	17	0.50	102
(YELLOW)	12	135	25	0.25	75
(GREEN)	10	135	15	0.25	38
ARROW	14	135	12	0.10	17
PED. SIGNAL	0	90	25	1.00	0
CONTROLLER	1	100	100	1.00	100
ILLUM. SIGN	0	64		0.05	0
FLASHER	0			0.50	0
TOTAL =					332

ENERGY COSTS TO:
ILLINOIS DEPARTMENT OF TRANSPORTATION
201 W. CENTER COURT
SHALUMBURG, IL 60196

ENERGY SUPPLY CONTACT:
PHONE:
COMPANY: COMMONWEALTH EDISON COMPANY

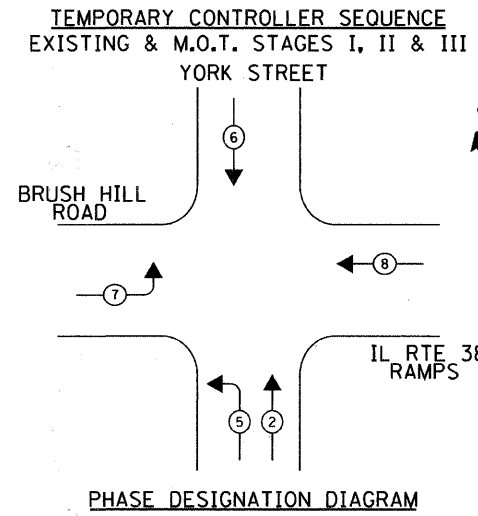
FILE NAME =	USER NAME = jngolemba
g:\CH08\0007\Road\Phase 2\Sheets\DI\X0007	TS-Temp-Sheet3.dgn
PLOT SCALE = 50.0000' / IN.	CHECKED - KMM
PLOT DATE = 8/8/2011	DATE - 7/4/2011

DESIGNED - KB	REVISED -
DRAWN - AJP	REVISED -
CHECKED - KMM	REVISED -
DATE - 7/4/2011	REVISED -

STATE OF ILLINOIS
DEPARTMENT OF TRANSPORTATION

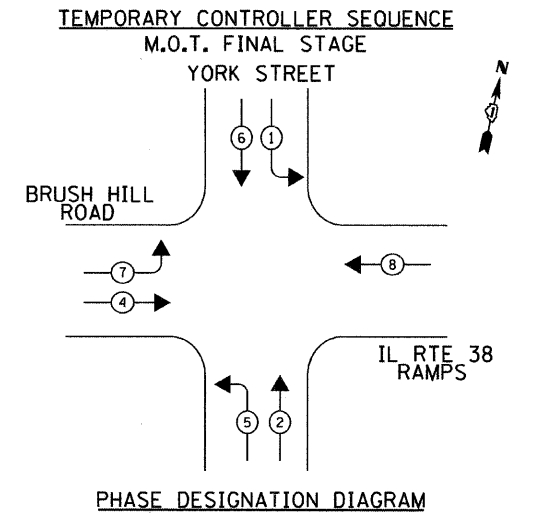
YORK STREET AT IL RTE 38 RAMPS/BRUSH HILL ROAD TEMPORARY TRAFFIC SIGNAL CABLE PLAN AND SEQUENCE OF OPERATIONS			
SCALE: NONE	SHEET NO. 36 OF 85 SHEETS	STA.	TO STA.

F.A.U. RTE.	SECTION	COUNTY	TOTAL SHEETS	SHEET NO.
2678	09-00171-00-CH	DUPAGE	85	36
CONTRACT NO. 63610				
FED. ROAD DIST. NO. 7 ILLINOIS FED. AID PROJECT				



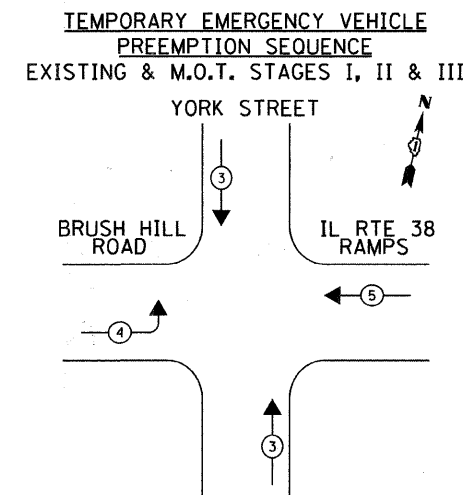
LEGEND

- ← (circle with number) VEHICULAR MOVEMENT
- * NUMBER REFERS TO ASSOCIATED PHASE

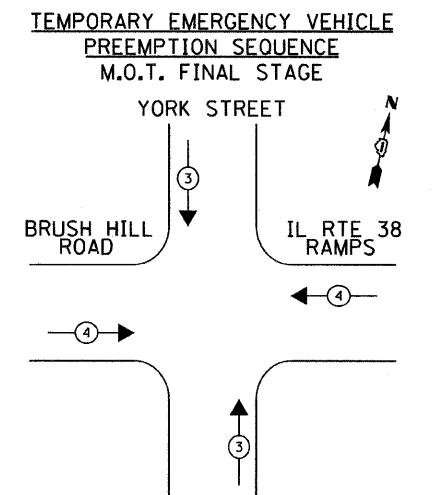


LEGEND

- ← (circle with number) VEHICULAR MOVEMENT
- * NUMBER REFERS TO ASSOCIATED PHASE



EMERGENCY VEHICLE PREEMPTORS			
EMERGENCY VEHICLE PREEMPTOR	3	4	5
MOVEMENT	↑	→	←



EMERGENCY VEHICLE PREEMPTORS		
EMERGENCY VEHICLE PREEMPTOR	3	4
MOVEMENT	↑	→