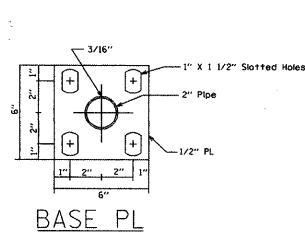
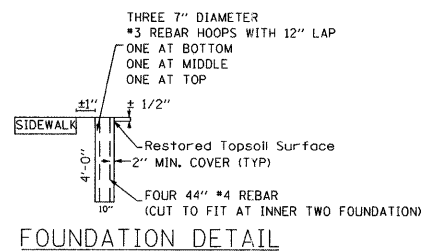


SCREW (STAINLESS STEEL) TO BE PLACED ON THE TOP

DETAIL E

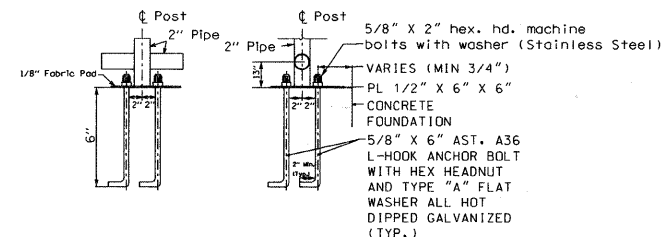


BASE PL



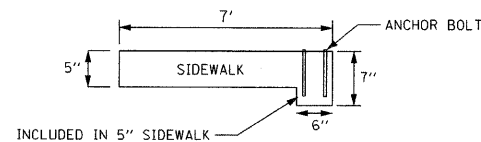
FOUNDATION DETAIL

HANDRAIL ELEVATION DETAIL

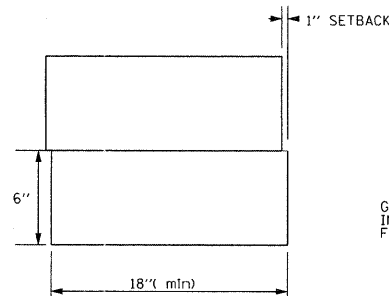


DETAIL D (ANCHOR BOLT DETAILS)

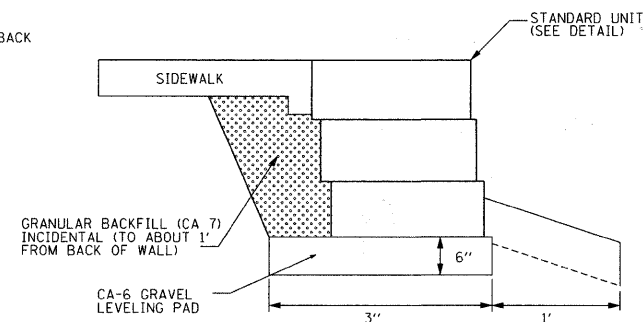
In lieu of the cast-in place anchor device shown, the Contractor has the option of drilling and epoxy grouting 5/8" dia. anchor rods. Embedment shall be according to the manufacturer's specifications



DETAIL A-A



STANDARD UNIT DETAIL



TYPICAL RETAINING WALL CROSS SECTION

NOTES

Rolling shall be according to Section 510 of the Standard Specifications, except as noted, and will be paid for at the Contract Unit Price per foot for Hand Rail.

Hollow Structural steel tubing shall conform to the requirements of ASTM designation A 500, Grade B, structural steel tubing.

All other steel shapes and plates shall conform to requirements of AASHTO W 270 Grade 36.

If the option of drilling and epoxy grouting the anchor rods is chosen, the Contractor shall use the capsule or adhesive cartridge type anchor rods that have been previously tested and given prior approval by the Department. The Contractor shall install these anchor rods in pre-drilled holes according to the manufacturer's recommendations and procedures. The capsule or the adhesive cartridge shall be sealed with premeasured amounts of the adhesive chemical.

Space reinforcement to miss anchor rods.

All posts, rolling, splices, anchor devices, and bent plates shall be galvanized after shop fabrication according to AASHTO M 111 and ASTM A 385. All bolts, nuts, washers, and anchor rods shall be galvanized according to AASHTO M 232 except stainless steel bolts as noted.

Vent holes for galvanizing shall be placed in the posts and rails at locations that will not allow the accumulation of moisture in the members.

HANDRAIL SHALL BE PAINTED BLACK PER ARTICLE 510.05

FILE NAME: P:\2010\ME10015_Roselle-DPCDOT\CADD\Shots\Handrail_Details.dgn
 USER: M. J. MILLER
 MILLER PROFESSIONAL SERVICES



200 22ND Street, Suite 216, Lombard, IL 60148
 630.785.0110 voice, 630.839.2566 fax
 www.mps-il.com

MILLENNIA PROFESSIONAL SERVICES

DESIGNED	TVN	REVISED	
DRAWN	JEB	REVISED	
CHECKED	TVN	REVISED	
DATE	5/18/2011	REVISED	

DUPAGE COUNTY
 DEPARTMENT OF TRANSPORTATION

ROSELLE RD. & WALNUT ST.
 INTERSECTION IMPROVEMENTS

RETAINING WALL AND
 HANDRAIL DETAILS

SCALE: N/A SHEET NO. OF SHEETS STA. TO STA.

F.A.P. RTE.	SECTION	COUNTY	TOTAL SHEETS	SHEET NO.
364	07-00184-12-CH	DUPAGE	49	14
CONTRACT NO. 63611				
FED. ROAD DIST. NO. 1 ILLINOIS FED. AID PROJECT				

P:\2010\ME10015_Roselle-DPCDOT\CADD\Shots\Handrail_Details.dgn