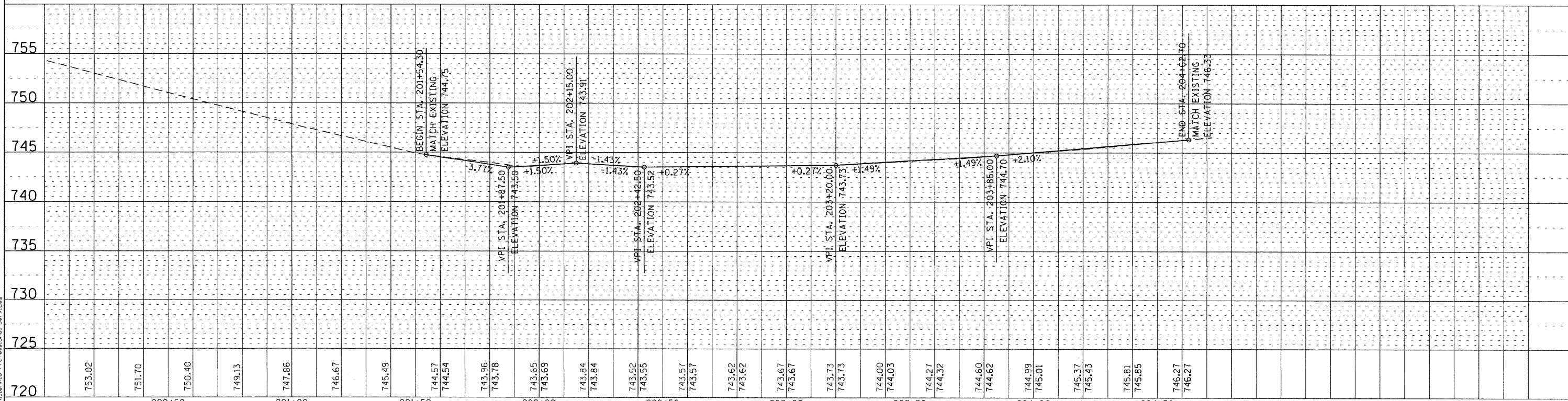
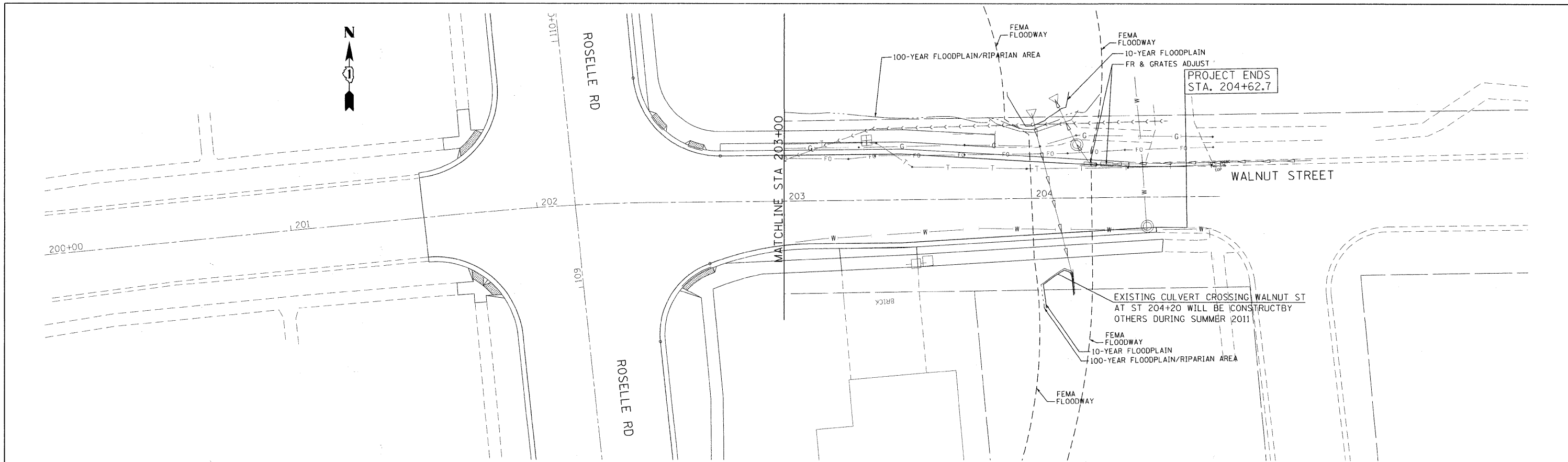


PLAN	SURVEYED	BY	DATE
	PLOTTED		
	NOTE BOOK		
	NO.		
	CADD FILE NAME		

PROFILE	SURVEYED	BY	DATE
	PLOTTED		
	NOTE BOOK		
	NO.		
	CADD FILE NAME		

FILE NAME = P:\2010\ME10015.Roselle.DPCDOT\CADD\Shts\Roselle-st-203.dgn
 SCALE = 1"=20'
 USER = JLM



MILLENNIA PROFESSIONAL SERVICES
 200 22ND Street, Suite 216, Lombard, IL 60148
 630.705.0110 voice, 630.839.2566 fax
 WWW.MPS-IL.COM

DESIGNED	TWN	REVISED	
DRAWN	TWN	REVISED	
CHECKED	RPD	REVISED	
DATE	8/15/2011	REVISED	

**DUPAGE COUNTY
 DEPARTMENT OF TRANSPORTATION**

**ROSELLE RD. & WALNUT ST.
 INTERSECTION IMPROVEMENTS**

F.A.P. RTE.	SECTION	COUNTY	TOTAL SHEETS	SHEET NO.
364	07-00184-12-CH	DUPAGE	49	22
CONTRACT NO. 63611				
FED. ROAD DIST. NO. 1 ILLINOIS FED. AID PROJECT				

SCALE: 1"=20' SHEET NO. 3 OF 3 SHEETS STA. 203+00 TO STA. 204+62.7

P:\2010\ME10015.Roselle.DPCDOT\CADD\Shts\Roselle-st-203.dgn