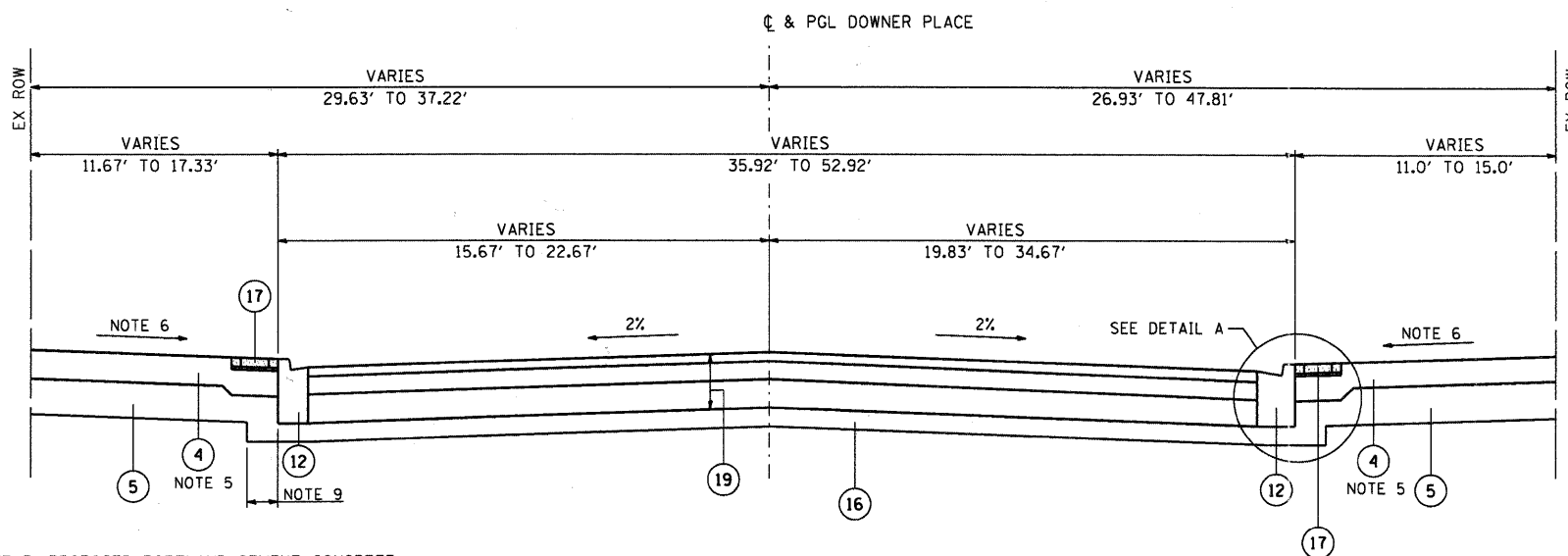


**PROPOSED TYPICAL SECTION
DOWNER PLACE**

STA. 106+56.48 TO STA. 107+50.00
 STA. 111+07.23 TO STA. 114+00.00
 STA. 117+15.00 TO STA. 119+78.48



**PROPOSED TYPICAL SECTION
DOWNER PLACE**

STA. 107+50.00 TO STA. 108+63.05
 STA. 110+64.65 TO STA. 111+07.23
 STA. 114+00.00 TO STA. 114+90.27
 STA. 116+90.37 TO STA. 117+15.00

NOTE 5: PROPOSED PORTLAND CEMENT CONCRETE SIDEWALK 6" LOCATIONS
 FROM STA. 110+52.12 RT TO 111+07.23 RT
 FROM STA. 110+64.33 LT TO 111+07.23 LT
 FROM STA. 114+66.66 RT TO 114+89.79 RT
 FROM STA. 114+79.68 LT TO 114+97.76 LT
 FROM STA. 116+79.42 RT TO 117+14.37 RT
 FROM STA. 116+96.32 LT TO 117+15.41 LT

NOTE 6: SIDEWALK SLOPE VARIES FROM 2% MAXIMUM TO 1/2% MINIMUM TO MATCH WITH EXISTING BUILDING ENTRANCES OR REMAINING SIDEWALK. IN NO CASE SHALL THE SLOPE BE BACK PITCHED TOWARD THE BUILDING.

NOTE 9: SUB-BASE GRANULAR MATERIAL, TYPE B 4" TO EXTEND 1'-0" PAST BACK OF CURB WHERE SIDEWALK IS BEING RECONSTRUCTED ADJACENT TO PROPOSED CURB AND GUTTER AND END AT BACK OF CURB WHERE EXISTING SIDEWALK IS TO REMAIN.

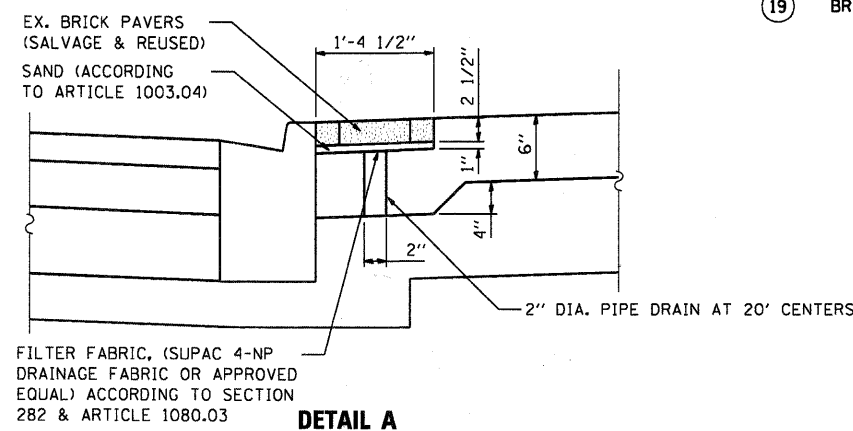
EXISTING LEGEND

- (A) EXISTING PPC SIDEWALK
- (B) EXISTING BRICK PAVERS
- (C) EXISTING COMBINATION CONCRETE CURB AND GUTTER, TYPE B-6.12
- (D) EXISTING ASPHALT PAVEMENT (DEPTH VARIES 5 1/2" TO 8 1/2")
- (E) EXISTING BRICK PAVEMENT
- (F) EXISTING METAL RAILING**
- (G) EXISTING SUPERSTRUCTURE (CAST IN PLACE CONCRETE SPANDREL WALLS)**
- (H) EXISTING SUPERSTRUCTURE (CAST IN PLACE CONCRETE ARCH)**
- (I) EXISTING WATERMAIN*
- (J) EXISTING AT&T DUCT PACKAGE*
- (K) EXISTING SUBGRADE**
- (L) EXISTING LIGHTING
- (M) HOT-MIX ASPHALT SURFACE REMOVAL, 2 1/4"
- (N) PAVEMENT REMOVAL
- (O) SIDEWALK REMOVAL

- * EXISTING UTILITY TO BE RELOCATED TO PROPOSED STRUCTURE
- ** REMOVAL PAID FOR UNDER REMOVAL OF EXISTING STRUCTURE

PROPOSED LEGEND

- (1) HOT-MIX ASPHALT SURFACE COURSE MIX "D", N50 (1 1/2")
- (2) LEVELING BINDER (MACHINE METHOD), N50 (1")
- (3) BRIDGE APPROACH SLAB (SEE BRIDGE PLANS)
- (4) PORTLAND CEMENT CONCRETE SIDEWALK 6"
- (5) SUB-BASE GRANULAR MATERIAL, TYPE B 6"
- (6) CONCRETE WEARING SURFACE 5"
- (7) PRECAST, PRESTRESSED CONCRETE DECK BEAMS (21" DEPTH) (SEE BRIDGE PLANS)
- (8) CONCRETE SUPERSTRUCTURE
- (9) PRECAST CONCRETE PANELS
- (10) CONCRETE BRIDGE RAIL (SPECIAL)
- (11) ORNAMENTAL LIGHT UNIT, COMPLETE
- (12) COMBINATION CONCRETE CURB AND GUTTER, TYPE B-6.12
- (13) WATER MAIN 12"
- (14) 2" PVC CONDUIT (SEE SUPERSTRUCTURE CROSS SECTION)
- (15) 1 - CITY OF AURORA DUCT, 4"
4 - AT&T DUCTS, 4"
4 - COMED DUCTS, 5"
- (16) SUB-BASE GRANULAR MATERIAL, TYPE B 4"
- (17) BRICK PAVERS (INCLUDED IN PC CONC SIDEWALK 6)
- (18) PORTLAND CEMENT CONCRETE SIDEWALK, SPECIAL 6 INCH, SPECIAL
- (19) BRIDGE APPROACH PAVEMENT CONNECTOR (FLEXIBLE)



DETAIL A
(COST INCLUDED IN PC CONC SIDEWALK 6)

HRGREEN
 PROJECT CONTACT: Michael G. Harding
 CLIENT: City of Aurora
 DATE PLOTTED: 7/26/2011 10:35:57 AM
 FILE NAME: 86890472-tyu03.dgn
 PEN TABLE: 22x34.tbl



USER NAME = whoad	DESIGNED - JPG	REVISED -
FILE NAME = 86890472-tyu03.dgn	DRAWN - WJH	REVISED -
PLOT SCALE =	CHECKED - MGH	REVISED -
PLOT DATE = 7/26/2011	DATE - 7/26/11	REVISED -

CITY OF AURORA

**TYPICAL SECTIONS
DOWNER PLACE**

SCALE: SHEET NO. 3 OF 4 SHEETS STA. TO STA.

F.A.U. RTE.	SECTION	COUNTY	TOTAL SHEETS	SHEET NO.
	07-00264-00-BR	KANE	164	9
CONTRACT NO. 63620				
FED. ROAD DIST. NO. [ILLINOIS] FED. AID PROJECT				