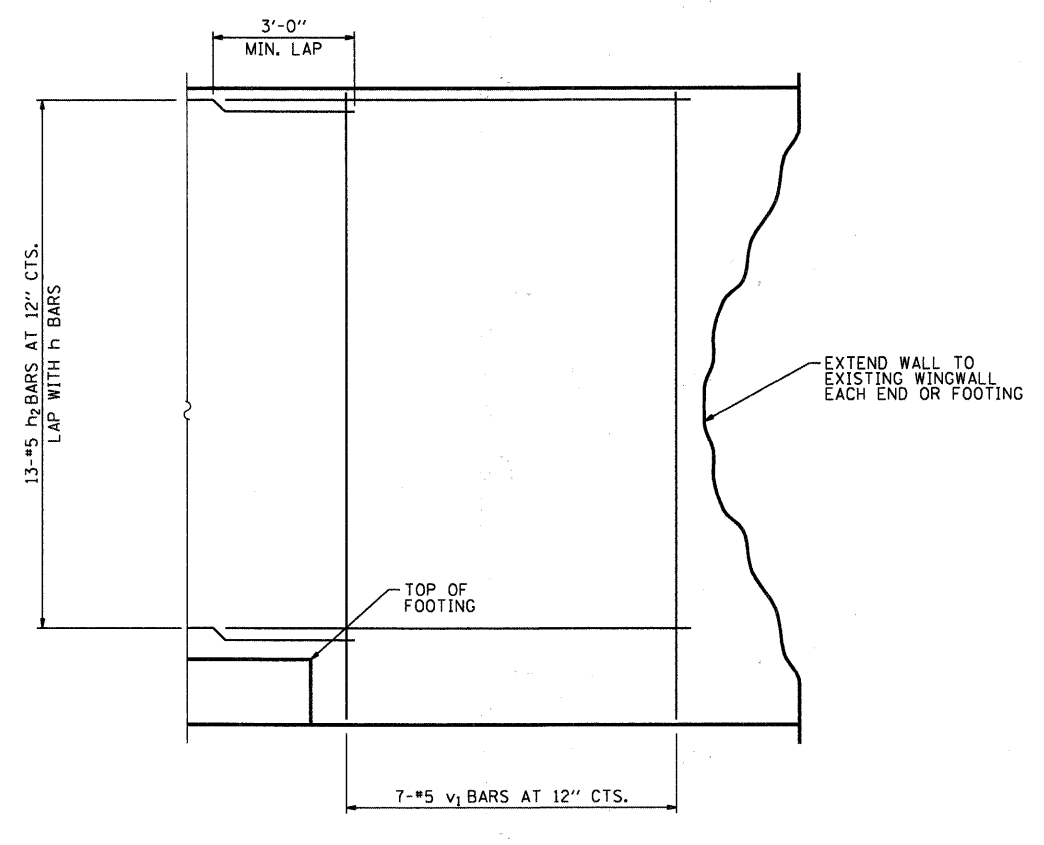
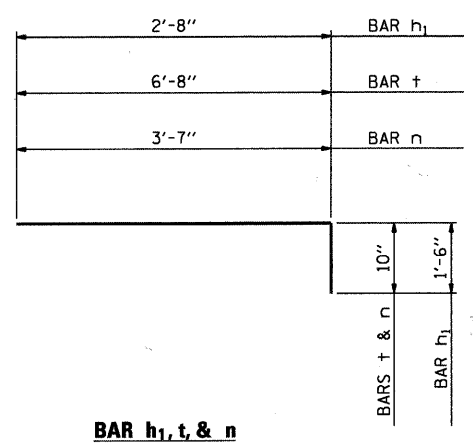


SECTION A-A

* COST OF COMPACTION INCLUDED WITH CONCRETE STRUCTURES



SECTION B-B



BAR h₁, t, & n

BILL OF MATERIAL

BAR	NO.	SIZE	LENGTH	SHAPE
n	40	#5	4'- 5"	┌
h	24	#5	20'- 0"	—
h ₁	40	#5	4'- 2"	┌
h ₂	26	#5	10'- 0"	—
t	40	#5	7'- 6"	┌
v	40	#5	10'- 8"	—
v ₁	14	#5	11'- 6"	—
w	14	#5	20'- 0"	—
SUBBASE GRANULAR MATERIAL, TYPE B			CU. YD.	24
SUBBASE GRANULAR MATERIAL, TYPE C 12"			SO. YD.	72
CONCRETE REMOVAL			CU. YD.	8.7
STRUCTURE EXCAVATION			CU. YD.	60.6
CONCRETE STRUCTURES			CU. YD.	33.8
REINFORCEMENT BARS			POUND	2,350
GEOCOMPOSITE WALL DRAIN			SO. YD.	67
CONTROLLED-LOW-STRENGTH-MATERIAL			CU. YD.	450.0

COMPANY NAME: HRGreen
 PROJECT CONTACT: Michael G. Harding
 CLIENT: City of Aurora
 DATE PLOTTED: 7/26/2011 10:51:58 AM
 PLOT DRIVER: hrp2011-10-26.dgn
 PEN TABLE: Struct 22x4.tbl



USER NAME = whood	DESIGNED - SSM	REVISED -
FILE NAME = 86890472-Tun02.dgn	DRAWN - WJH	REVISED -
PLOT SCALE =	CHECKED - RGD	REVISED -
PLOT DATE = 7/26/2011	DATE - 7/26/11	REVISED -

CITY OF AURORA

**STREET VAULT FILL DETAILS
DOWNER PLACE**

SCALE: SHEET NO. 2 OF 2 SHEETS STA. TO STA.

F.A.U. RTE.	SECTION	COUNTY	TOTAL SHEETS	SHEET NO.
	07-00264-00-BR	KANE	164	47
FED. ROAD DIST. NO.			CONTRACT NO. 63620	
ILLINOIS FED. AID PROJECT				