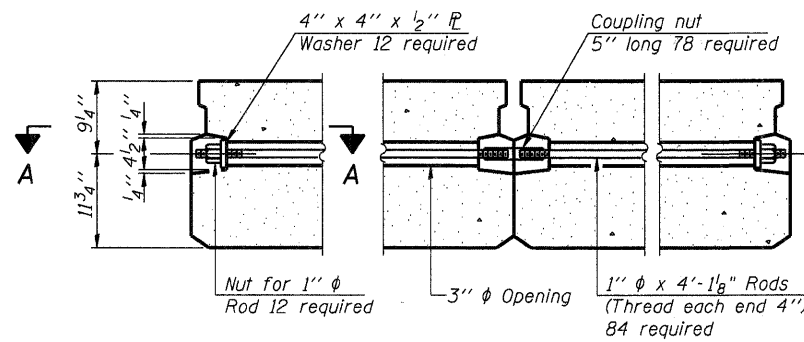


FABRIC BEARING PAD
(Interior)

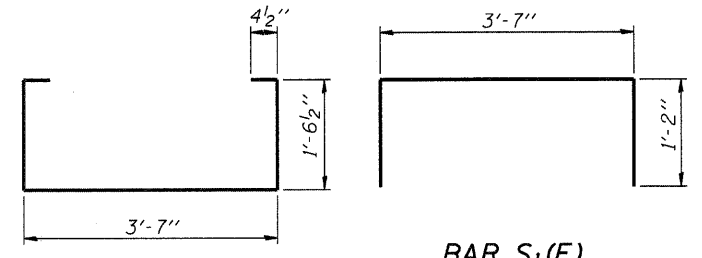
FABRIC BEARING PAD
(Exterior)

SECTION A-A

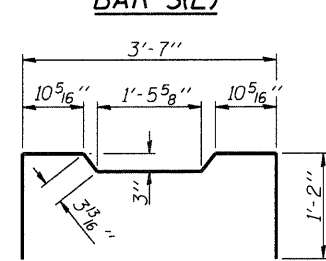
Notes:
All bearing pads shall be 1" thick.
Omit holes when using expansion bearings.
Expansion bearing pad shall be bonded to the substructure.



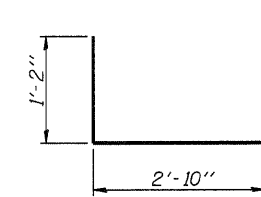
TYPICAL TRANSVERSE TIE ASSEMBLY



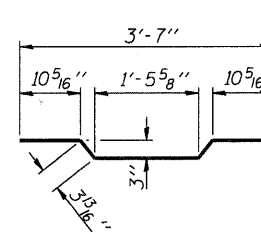
BAR S1(E)



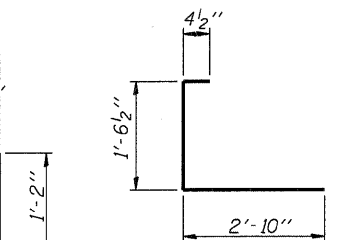
BAR S2(E)



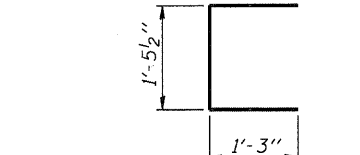
BAR S4(E)



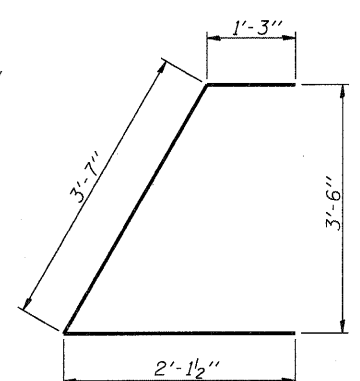
BAR A1(E)



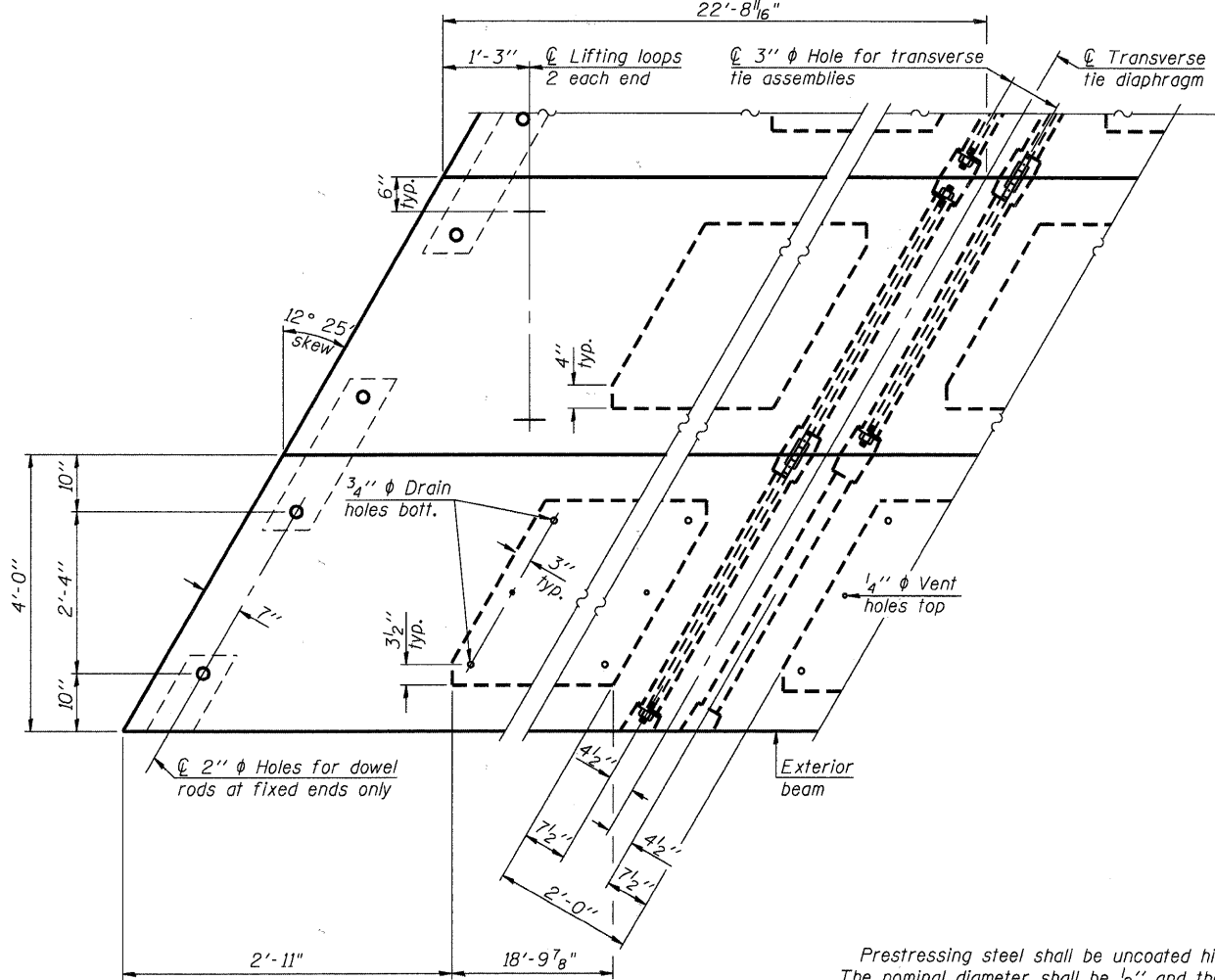
BAR S3(E)



BAR U1(E)



BAR U1(E)

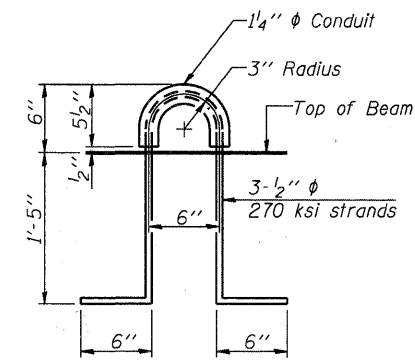


PLAN VIEW

Note: Connect beams in pairs with the transverse tie configuration shown.

NOTES

Prestressing steel shall be uncoated high strength, low relaxation 7-wire strand, Grade 270. The nominal diameter shall be 1/2" and the nominal cross-sectional area shall be 0.153 sq. in.
The 1" rods in the transverse tie assembly shall be tightened to a snug fit and the threads set. Pockets on exterior faces of bridge shall be filled with grout after transverse tie assembly is in place.
Reinforcement bars shall conform to ASTM A 706, Grade 60. (See Special Provisions).
Two 1/8" fabric adjusting shims of the dimensions of the exterior bearing pad shall be provided for each bearing pad location.
A minimum 2 1/2" diameter lifting pin shall be used to engage the lifting loops during handling.
Corrosion Inhibitor, per Article 1020.05(b)(12) and 1021.06 of the Standard Specifications, shall be used in the concrete for precast prestressed concrete deck beams.
Compressive strength of prestressed concrete, f'c, shall be 6000 psi.
Compressive strength of prestressed concrete at release, f'ci, shall be 5000 psi.
See pier sheets for retainer angle details and anchor bolt locations.



LIFTING LOOP DETAIL

BILL OF MATERIAL

Precast Prestressed Conc. Deck Bms. (21" depth)	Sq. Ft.	7,636
---	---------	-------

COMPANY NAME: HRGREEN
PROJECT CONTACT: Michael G. Harding
CLIENT: City of Aurora
DATE PLOTTED: 7/26/2011 11:00:22 AM
FILE NAME: 86090472-W-Pre02.dgn
PLOT DRIVER: pdfcut
PLOT TABLE: Structure 22x34.tbl

PD-2148-LD

7-1-10



USER NAME = whood	DESIGNED - JPG	REVISED -
PLOT SCALE = N.T.S.	CHECKED - RGD	REVISED -
PLOT DATE = 7/26/2011	DRAWN - WJH	REVISED -
	CHECKED -	REVISED -

CITY OF AURORA
DOWNER PLACE OVER THE WEST BRANCH
OF THE FOX RIVER

21"X48" PPC DECK BEAM DETAILS
STRUCTURE NO. 045-6006

SHEET NO. SW-17 OF SW-48 SHEETS

F.A. RTE.	SECTION	COUNTY	TOTAL SHEETS	SHEET NO.
	07-00264-00-BR	KANE	164	69
			CONTRACT NO. 63620	
ILLINOIS FED. AID PROJECT				