

DAYTON SUPERIOR F-41, 1"  $\phi$  x 8" WINGWALL INSERT

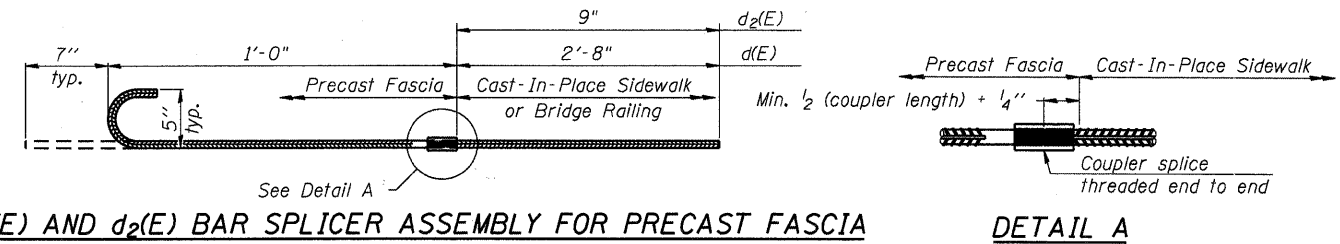
SECTION DIMENSION TABLE

	Left Side			Center Span			Right Side		
	A	B	C	D	E	F	A	B	C
S-1	5'-7 3/4"	7'-3 1/4"	9'-1 1/4"	3'-8"	2'-10"	4'-8"	5'-2 5/8"	6'-10 1/8"	8'-8 1/8"
S-2	5'-0 1/2"	6'-8"	8'-6"	3'-0 3/4"	2'-2 3/4"	4'-0 3/4"	4'-7 3/8"	6'-2 7/8"	8'-0 7/8"
S-3	4'-5 1/4"	6'-0 3/4"	7'-10 3/4"	2'-5 1/2"	1'-7 1/2"	3'-5 1/2"	4'-0 1/8"	5'-7 5/8"	7'-5 5/8"
N-1	5'-0 7/8"	6'-8 3/8"	8'-6 3/8"	N/A	N/A	3'-6 1/4"	4'-6"	6'-1 1/2"	7'-11 1/2"
N-2	4'-5 5/8"	6'-1 1/8"	7'-11 1/8"	2'-11"	2'-1"	3'-11"	4'-10 3/4"	6'-6 1/4"	8'-4 1/4"
N-3	3'-10 1/4"	5'-5 7/8"	7'-3 3/4"	2'-3 3/4"	1'-5 3/4"	3'-3 3/4"	4'-3 1/2"	5'-11"	7'-9"

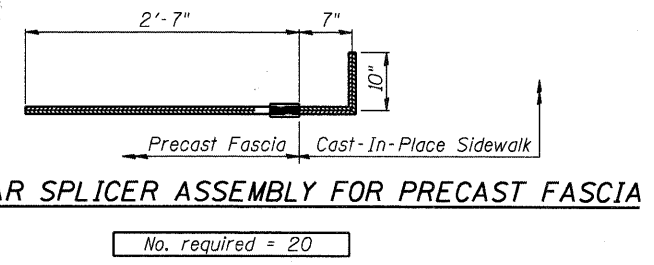
U BAR DIMENSION TABLE

G	u(E)	u <sub>1</sub> (E)	u <sub>2</sub> (E)	u <sub>3</sub> (E)	u <sub>4</sub> (E)	u <sub>5</sub> (E)	u <sub>6</sub> (E)	u <sub>7</sub> (E)	u <sub>8</sub> (E)	u <sub>9</sub> (E)	u <sub>10</sub> (E)	u <sub>11</sub> (E)
	2'-0"	2'-2"	2'-4"	2'-8"	2'-10"	3'-1"	3'-2"	3'-3"	3'-8"	4'-5"	4'-9"	5'-1"

H	u <sub>12</sub> (E)	u <sub>13</sub> (E)	u <sub>14</sub> (E)	u <sub>15</sub> (E)	u <sub>16</sub> (E)	u <sub>17</sub> (E)	u <sub>18</sub> (E)	u <sub>19</sub> (E)	u <sub>20</sub> (E)	u <sub>21</sub> (E)	u <sub>22</sub> (E)	u <sub>23</sub> (E)
	7'-5"	7'-0"	6'-10"	6'-5"	6'-3"	5'-10"	6'-10"	7'-3"	6'-3"	6'-8"	5'-8"	6'-1"

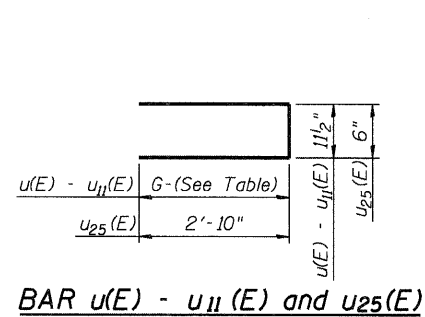


No. d(E) required = 220  
No. d<sub>2</sub>(E) required = 440

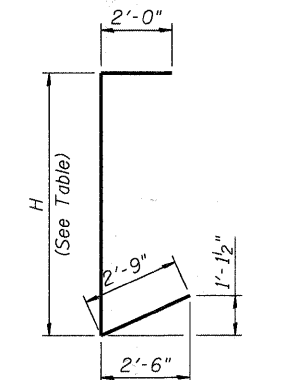


No. required = 20

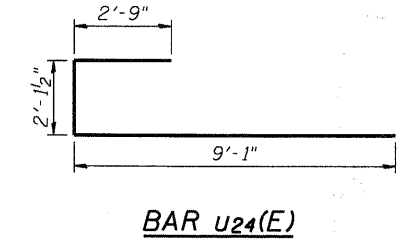
Note:  
1. Precast concrete supplier is responsible for supplying complete bar splicer assemblies.



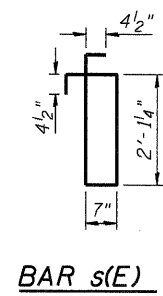
BAR u(E) - u<sub>11</sub>(E) and u<sub>25</sub>(E)



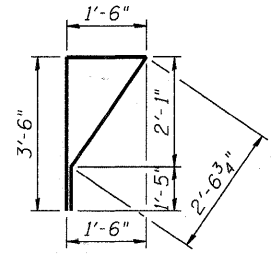
BAR u<sub>12</sub>(E) - u<sub>23</sub>(E)



BAR u<sub>24</sub>(E)



BAR s(E)



BAR s<sub>1</sub>(E)

SPANDREL PANEL REINFORCEMENT

Bar	No.	Size	Length	Shape
s(E)	24	#4	6'-1 1/2"	
s <sub>1</sub> (E)	220	#4	9'-0"	
p(E)	24	#7	20'-5"	
p <sub>1</sub> (E)	24	#7	19'-9"	
h(E)	92	#5	39'-6"	
h <sub>1</sub> (E)	4	#5	13'-9"	
h <sub>2</sub> (E)	4	#5	5'-8"	
u(E)	8	#4	5'-0"	
u <sub>1</sub> (E)	14	#4	5'-4"	
u <sub>2</sub> (E)	16	#4	5'-8"	
u <sub>3</sub> (E)	34	#4	6'-4"	
u <sub>4</sub> (E)	26	#4	6'-8"	
u <sub>5</sub> (E)	32	#4	7'-2"	
u <sub>6</sub> (E)	8	#4	7'-4"	
u <sub>7</sub> (E)	24	#4	7'-6"	
u <sub>8</sub> (E)	64	#4	8'-4"	
u <sub>9</sub> (E)	36	#4	9'-10"	
u <sub>10</sub> (E)	40	#4	10'-6"	
u <sub>11</sub> (E)	46	#4	11'-2"	
u <sub>12</sub> (E)	4	#5	12'-2"	
u <sub>13</sub> (E)	4	#5	11'-9"	
u <sub>14</sub> (E)	4	#5	11'-7"	
u <sub>15</sub> (E)	4	#5	11'-2"	
u <sub>16</sub> (E)	4	#5	11'-0"	
u <sub>17</sub> (E)	4	#5	10'-7"	
u <sub>18</sub> (E)	4	#5	11'-7"	
u <sub>19</sub> (E)	4	#5	12'-0"	
u <sub>20</sub> (E)	4	#5	11'-0"	
u <sub>21</sub> (E)	4	#5	11'-5"	
u <sub>22</sub> (E)	4	#5	10'-5"	
u <sub>23</sub> (E)	4	#5	10'-10"	
u <sub>24</sub> (E)	24	#6	13'-11 1/2"	
u <sub>25</sub> (E)	24	#4	6'-2"	

Approximate quantities for six (6) Spandrel Panels

HRGreen  
1100 N. 1st St.  
Aurora, IL 60007  
708.471.1000  
www.hrgreen.com



USER NAME = whood	DESIGNED - SSM	REVISED -
PLOT SCALE = N.T.S.	CHECKED - RGD	REVISED -
PLOT DATE = 7/26/2011	DRAWN - WJH	REVISED -
	CHECKED -	REVISED -

CITY OF AURORA  
DOWNER PLACE OVER THE WEST BRANCH  
OF THE FOX RIVER

PRECAST CONCRETE FASCIA PANEL - SPANDREL  
STRUCTURE NO. 045-6006  
SHEET NO. SW-23 OF SW-48 SHEETS

F.A. RTE.	SECTION	COUNTY	TOTAL SHEETS	SHEET NO.
	07-00264-00-BR	KANE	164	75
CONTRACT NO.			63620	
[ILLINOIS] FED. AID PROJECT				