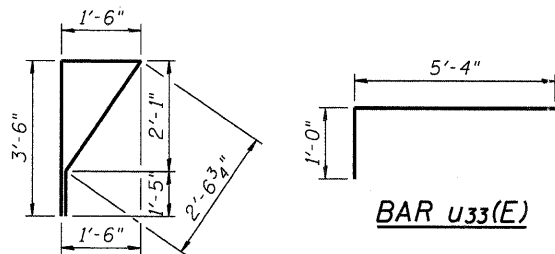


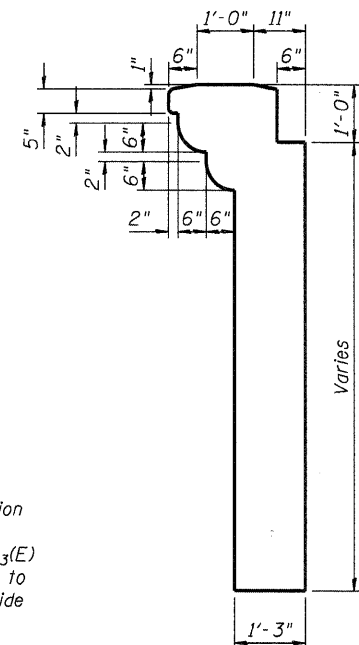
PLAN - SWA

Panel SEA - Opposite Hand

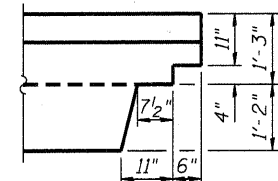


BAR U33(E)

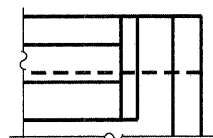
BAR s1(E)



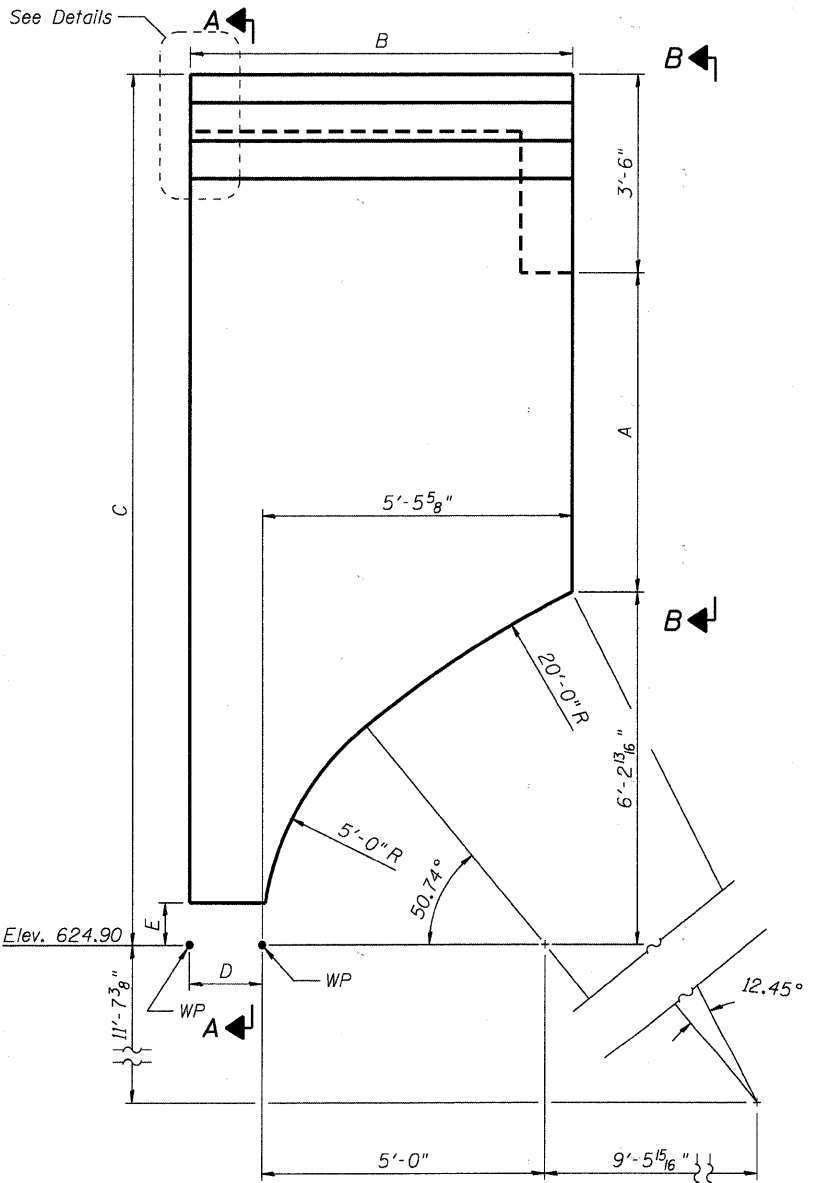
SECTION A-A



DETAIL PLAN - SEA

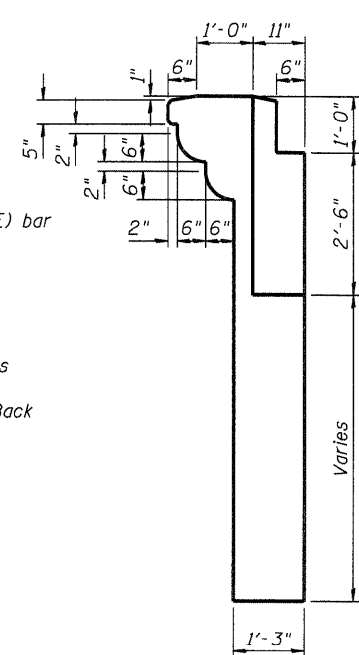
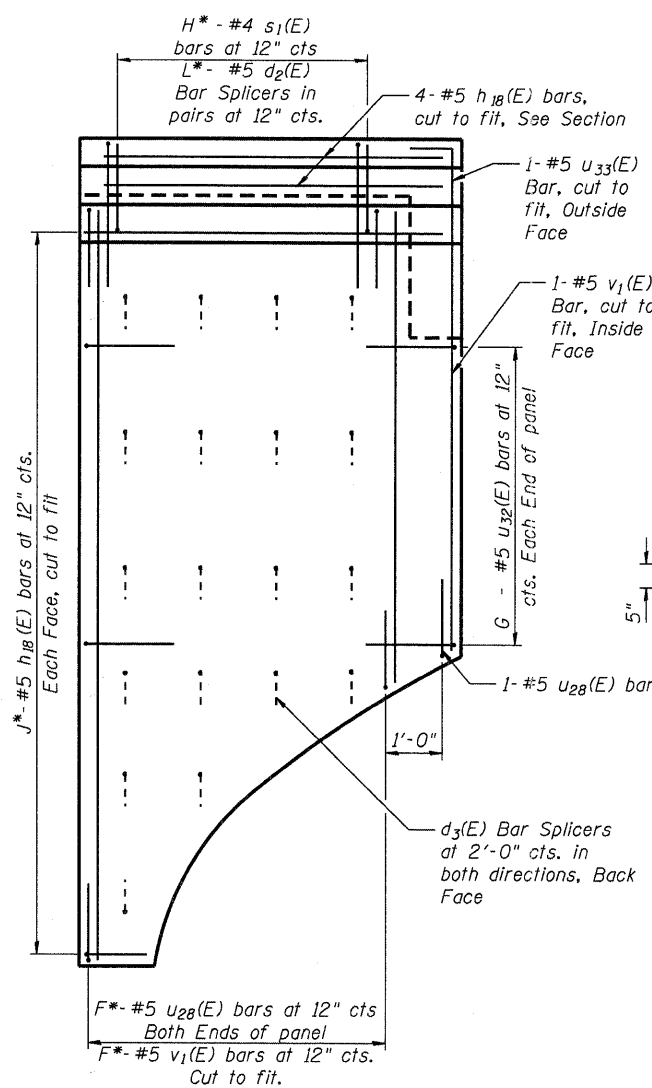


DETAIL ELEVATION - SEA



ELEVATION - SWA

Panel SEA - Opposite Hand



SECTION B-B

	U26(E)	U27(E)	U28(E)	U32(E)
Length	10"	1'-6"	1'-0"	10 3/4"
U26(E)	4'-3"			
U27(E)	4'-3"			
U28(E)	3'-9"			
U32(E)	3'-9"			

BARS U26(E), U27(E), U28(E) AND U30(E)

ABUTMENT PANEL REINFORCEMENT

Bar	No.	Size	Length	Shape
s1(E)	17	#4	9'-0"	∇
h18(E)	40	#5	6'-3"	
U26(E)	6	#4	9'-4"	U
U27(E)	3	#4	10'-0"	U
U28(E)	37	#5	8'-6"	U
U32(E)	32	#5	8'-4 3/4"	U
U33(E)	3	#5	6'-4"	U
v1(E)	26	#5	13'-4"	

Approximate quantities for two (2) abutment panels.

PANEL DIMENSION TABLE

	A	B	C	D	E	F	G	H	J	K	L
SWA	5'-7 3/4"	6'-9"	15'-5 3/8"	1'-3 3/8"	9"	6	6	6	14	6	12
SEA	4'-0 1/8"	6'-0"	13'-8 1/8"	6 3/8"	1"	6	5	6	13	6	12

COMPANY NAME: HRGreen
 PROJECT CONTACT: Michael G. Harding
 CLIENT: City of Aurora
 FILE NAME: 16690472-1111-01.dgn
 PLOT DRIVER: pldrvr
 PEN TABLE: Struct 22x24.tbl



USER NAME = whood
 DESIGNED - SSM
 CHECKED - RGD
 PLOT SCALE = N.T.S.
 DRAWN - WJH
 PLOT DATE = 7/26/2011

REVISI...
 REVISI...
 REVISI...
 REVISI...

CITY OF AURORA
DOWNER PLACE OVER THE WEST BRANCH
OF THE FOX RIVER

PRECAST CONCRETE FASCIA PANEL - ABUTMENT
STRUCTURE NO. 045-6006

F.A. RTE. SECTION 07-00264-00-BR COUNTY KANE TOTAL SHEETS 164 SHEET NO. 77 CONTRACT NO. 63620

SHEET NO. SW-25 OF SW-48 SHEETS

ILLINOIS FED. AID PROJECT