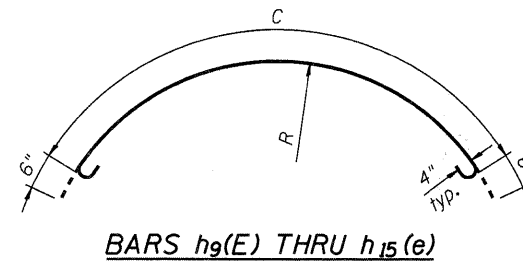
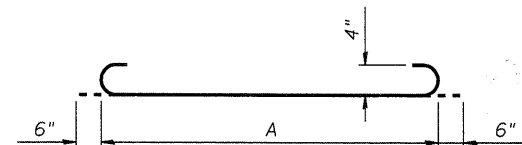


PLAN

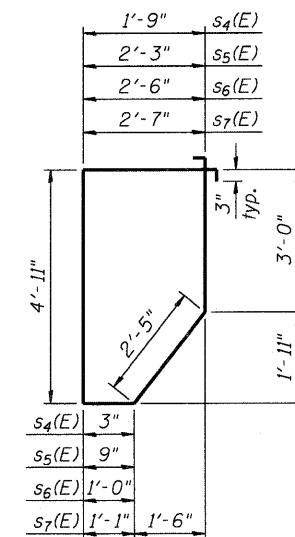
Note:  
The Precaster may, at his option, Cast the Outlook Bottom and the Pier Fascia Panels as one piece. Submit reinforcement details for review and approval.



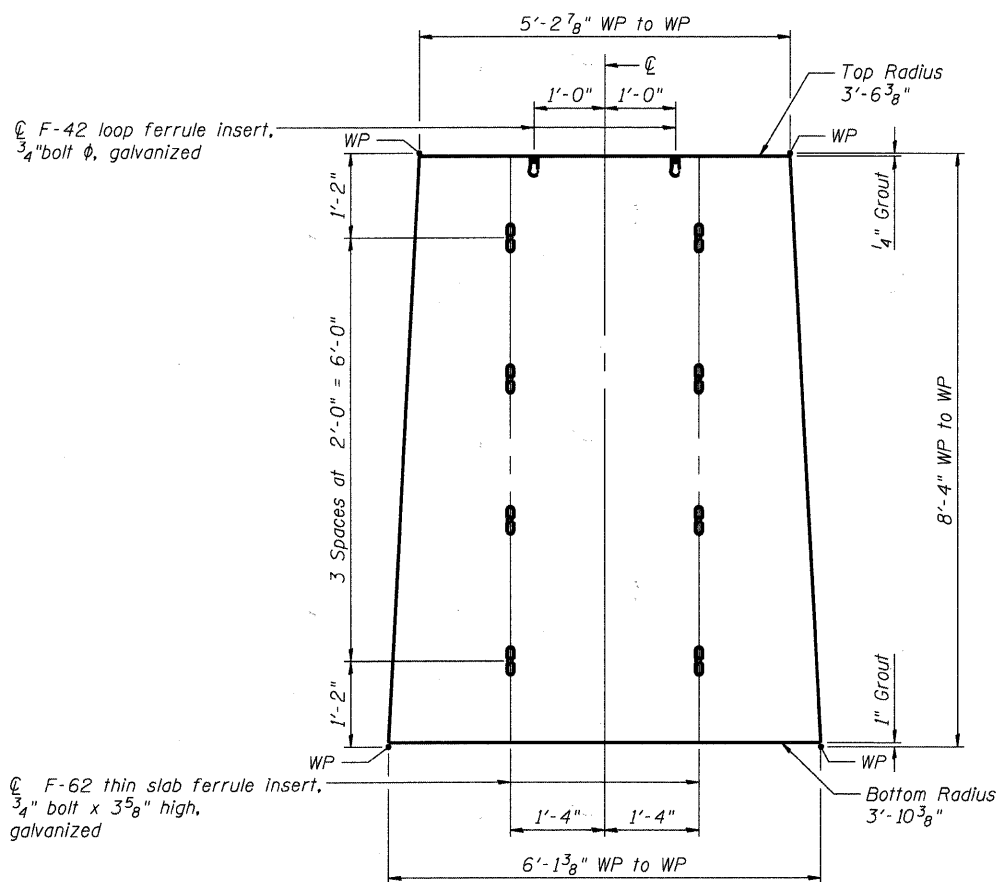
	$h_9(E)$	$h_{10}(E)$	$h_{11}(E)$	$h_{12}(E)$	$h_{13}(E)$	$h_{14}(E)$	$h_{15}(E)$
R	3'-7 1/4"	4'-3 3/4"	5'-0 1/2"	5'-7 1/4"	6'-2"	6'-10 1/4"	7'-6 1/2"
C	5'-0"	7'-8"	10'-2"	12'-0"	13'-10"	16'-1"	18'-4"



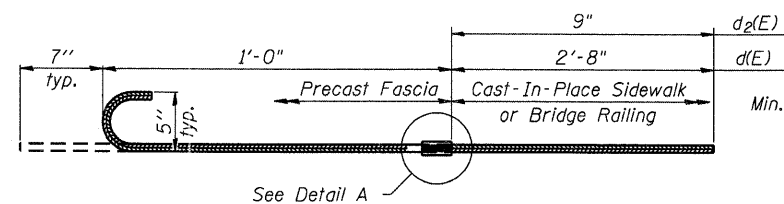
	$h_3(E)$	$h_4(E)$	$h_5(E)$	$h_6(E)$	$h_7(E)$	$h_8(E)$
A	4'-6"	6'-7"	8'-5"	9'-9"	11'-0"	12'-6"



BARS  $s_4(E)$  THRU  $s_7(E)$

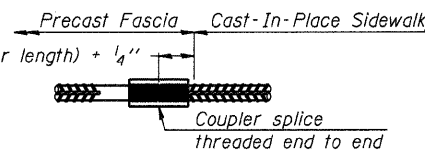


ELEVATION

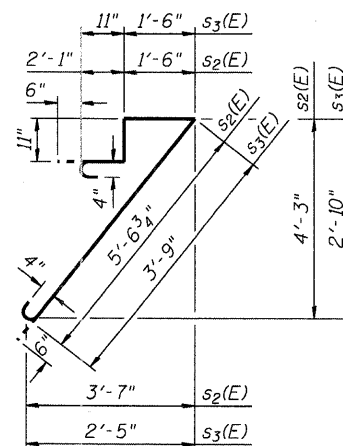


#5  $d(E)$  AND  $d_2(E)$  BAR SPLICER ASSEMBLY FOR PRECAST FASCIA

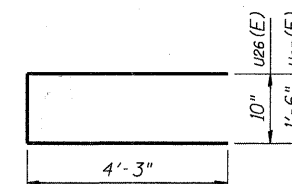
No.  $d(E)$  required = 68 - Outlooks  
No.  $d_2(E)$  required = 136 - Outlooks



DETAIL A



BARS  $s_2(E)$  AND  $s_3(E)$



BARS  $u_{26}(E)$  AND  $u_{27}(E)$

OUTLOOK REINFORCEMENT

Bar	No.	Size	Length	Shape
$s_2(E)$	60	#4	11'-0"	⌋
$s_3(E)$	8	#4	7'-2"	⌋
$s_4(E)$	8	#4	12'-10"	⌋
$s_5(E)$	8	#4	13'-10"	⌋
$s_6(E)$	8	#4	14'-4"	⌋
$s_7(E)$	4	#4	14'-6"	⌋
$h_3(E)$	4	#4	5'-6"	⌋
$h_4(E)$	4	#4	7'-7"	⌋
$h_5(E)$	4	#4	8'-5"	⌋
$h_6(E)$	4	#4	9'-9"	⌋
$h_7(E)$	4	#4	11'-0"	⌋
$h_8(E)$	4	#4	12'-6"	⌋
$h_9(E)$	8	#4	6'-0"	⌋
$h_{10}(E)$	4	#4	8'-8"	⌋
$h_{11}(E)$	16	#4	11'-2"	⌋
$h_{12}(E)$	4	#4	13'-0"	⌋
$h_{13}(E)$	12	#4	14'-10"	⌋
$h_{14}(E)$	8	#4	17'-1"	⌋
$h_{15}(E)$	4	#4	19'-4"	⌋
$u_{26}(E)$	16	#4	9'-4"	⌋
$u_{27}(E)$	8	#4	10'-0"	⌋

Approximate quantities for four (4) Outlook Assemblies

HRGREEN  
PROJECT CONTACT: Michael G. Harding  
DATE PLOTTED: 7/26/2011 10:01 AM  
FILE NAME: 86090472-WP-048-102.dgn  
PLOT DRIVER: pdfplot  
PEN TABLE: Structure 22x34.tbl



USER NAME = whoold  
PLOT SCALE = N.T.S.  
PLOT DATE = 7/26/2011

DESIGNED - SSM  
CHECKED - RGD  
DRAWN - WJH  
CHECKED -

REVISED -  
REVISED -  
REVISED -  
REVISED -

CITY OF AURORA  
DOWNER PLACE OVER THE WEST BRANCH  
OF THE FOX RIVER

PRECAST CONCRETE OUTLOOK - BOTTOM DETAILS  
STRUCTURE NO. 045-6006

SHEET NO. SW-29 OF SW-48 SHEETS

F.A. RTE.	SECTION	COUNTY	TOTAL SHEETS	SHEET NO.
	07-00264-00-BR	KANE	164	81
			CONTRACT NO. 63620	
ILLINOIS FED. AID PROJECT				