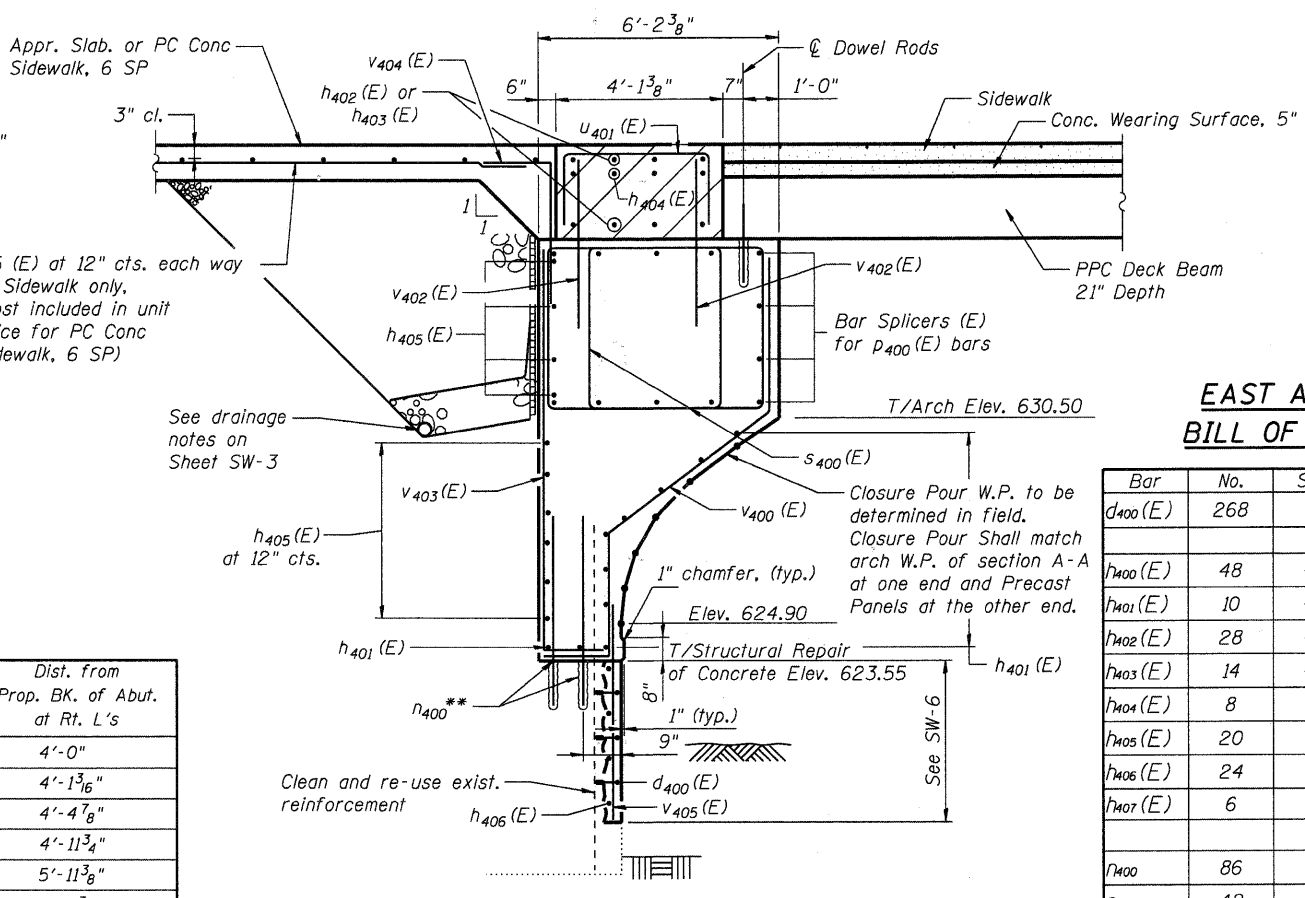


SECTION A-A THRU ABUTMENT
Horizontal Dimensions at Rt. L's



SECTION B-B THRU ABUTMENT
Horizontal Dimensions at Rt. L's

W.P. Height from Elev. 624.90	Dist. from Prop. Bk. of Abut. at Rt. L's
0"	4'-0"
1'-0"	4'-1 3/8"
2'-0"	4'-4 7/8"
3'-0"	4'-11 3/4"
4'-0"	5'-11 3/8"
5'-0"	7'-3 3/8"

**EAST ABUTMENT
BILL OF MATERIAL**

Bar	No.	Size	Length	Shape
d400(E)	268	#4	1'-4"	L
h400(E)	48	#5	20'-10"	—
h401(E)	10	#5	6'-4"	—
h402(E)	28	#5	32'-6"	—
h403(E)	14	#5	10'-1"	—
h404(E)	8	#5	4'-10"	—
h405(E)	20	#5	7'-6"	—
h406(E)	24	#5	23'-5"	—
h407(E)	6	#5	3'-10"	—
h400	86	#5	1'-10"	—
h401	42	#8	4'-10"	—
P400(E)	54	#7	19'-3"	—
S400(E)	128	#5	19'-5"	—
S401(E)	2	#4	12'-2"	—
U400(E)	56	#5	9'-10"	—
U401(E)	8	#5	8'-10"	—
U402(E)	12	#5	9'-11"	—
V400(E)	64	#5	13'-8"	—
V401(E)	54	#5	10'-11"	—
V402(E)	128	#5	4'-3"	—
V403(E)	12	#5	13'-3"	L
V404(E)	64	#5	6'-7"	L
V405(E)	64	#5	10'-8"	—
V406(E)	4	#5	11'-6"	L
Structure Excavation		Cu. Yd.	143.0	
Cofferdam Excavation		Cu. Yd.	53.4	
Cofferdam (Location - 3)		Each	1	
Concrete Structures		Cu. Yd.	194.3	
Concrete Superstructure		Cu. Yd.	33.3	
Reinforcement Bars		Pound	710	
Reinforcement Bars, Epoxy Coated		Pound	12,220	
Bar Splicers		Each	49	
Concrete Sealer		Sq. Ft.	100	

Notes:
 ** = Drill and grout into existing concrete in conformance with Article 509.06 and furnish adhesive in conformance with Article 1027.01. The cost of drilling, cleaning and furnishing the adhesive shall be included under the contract unit price for "Reinforcement Bars" and will not be paid for separately. Follow the approved manufacturer's instructions except that the following minimum hole sizes and adhesive embedment lengths shall govern if the manufacturer calls for less:

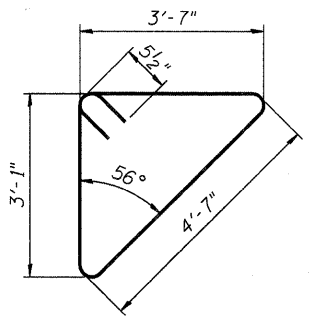
Rebar Size	Min. Hole Size	Min. Adhesive Embedment
#8	1 1/8" Dia. X 12" deep	10 1/2"
#5	3/4" Dia. X 7 1/2" deep	6 1/2"

For #8 bars at existing buttress locations:

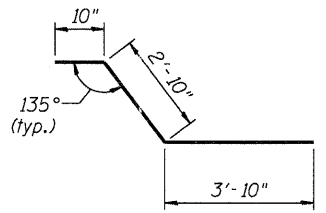
Exact layout and spacing of #8 n401 Bars will be adjusted by Engineer based upon field conditions uncovered after the back of the existing abutment is excavated. The same configuration and number of anchored rebars is anticipated with spacing and distribution modified to fit existing conditions.

See Roadway Plan and Profile and Intersection Details for limits of Conc. Sidewalk, 6 SP. Reinforcement shall be included from back of abutment to 14'-0" from back of abutment or first joint if shown in plan.

See Pouring sequence notes on previous sheet.

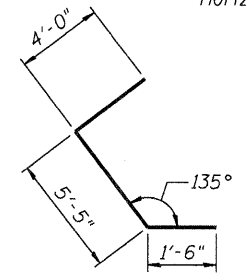


BAR S401(E)

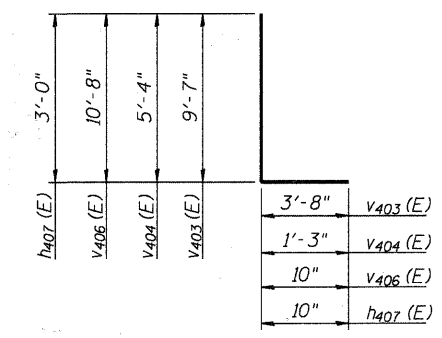


BAR h405(E)

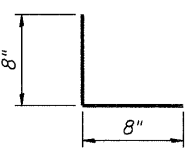
-trim to fit at north end location



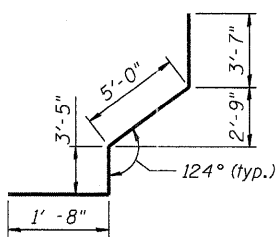
BAR V401(E)



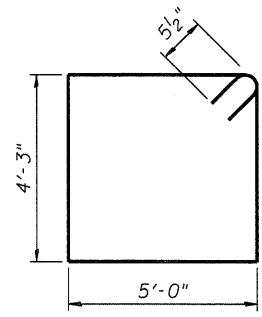
BARS h407(E), v403(E), v404(E) & v406(E)



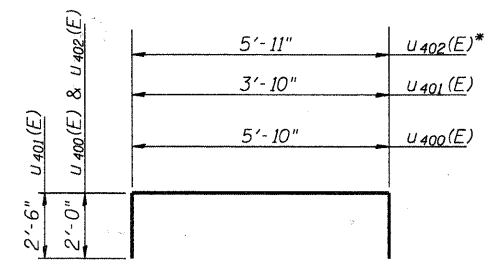
BAR d400(E)



BAR v400(E)



BAR S400(E)



BARS U400(E), U401(E), & U402(E)

* = bend to fit skew

For details of Bar Splicers, see sheet SW-43

COMPANY NAME: HRGreen
 PROJECT CONTACT: Michael G. Harding
 CLIENT: City of Aurora
 FILE NAME: 07-00264-00-BR-01
 PLOT DRIVER: pldrvr.plt
 PEN TABLE: Struct_2023.tbl

HRGreen.com
 Illinois Professional Design Firm
 # 184-001322

USER NAME = whood	DESIGNED - JMW	REVISED -
PLOT SCALE = N.T.S.	CHECKED - RGD <td>REVISED -</td>	REVISED -
PLOT DATE = 7/26/2011	DRAWN - WJH <td>REVISED -</td>	REVISED -
	CHECKED -	REVISED -

CITY OF AURORA
DOWNER PLACE OVER THE WEST BRANCH
OF THE FOX RIVER

EAST ABUTMENT DETAILS
STRUCTURE NO. 045-6006
 SHEET NO. SW-35 OF SW-48 SHEETS

F.A. RTE.	SECTION	COUNTY	TOTAL SHEETS	SHEET NO.
	07-00264-00-BR	KANE	164	87
CONTRACT NO. 63620			ILLINOIS FED. AID PROJECT	