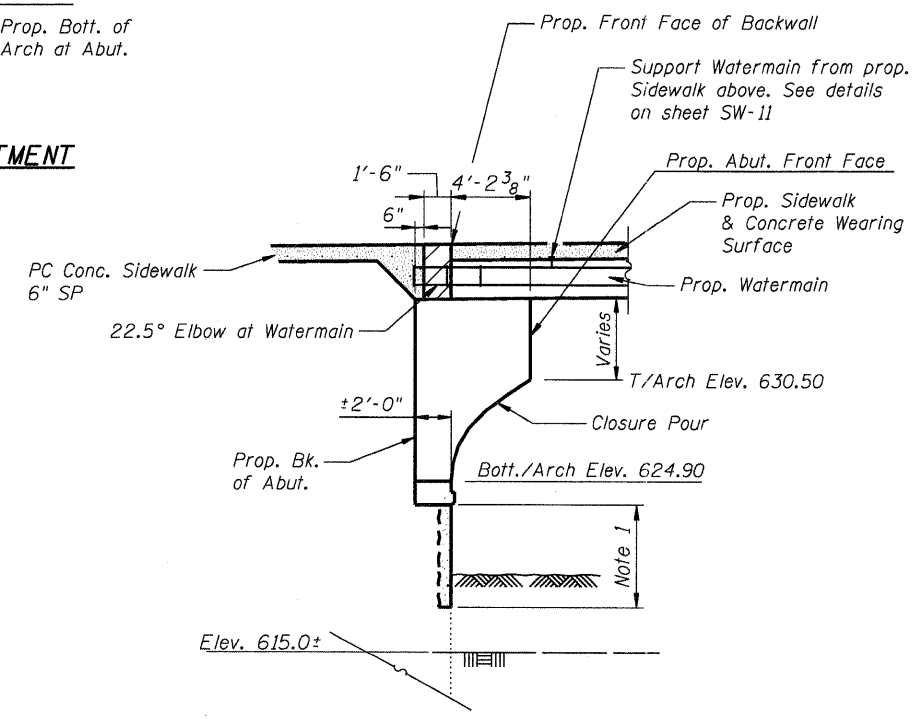
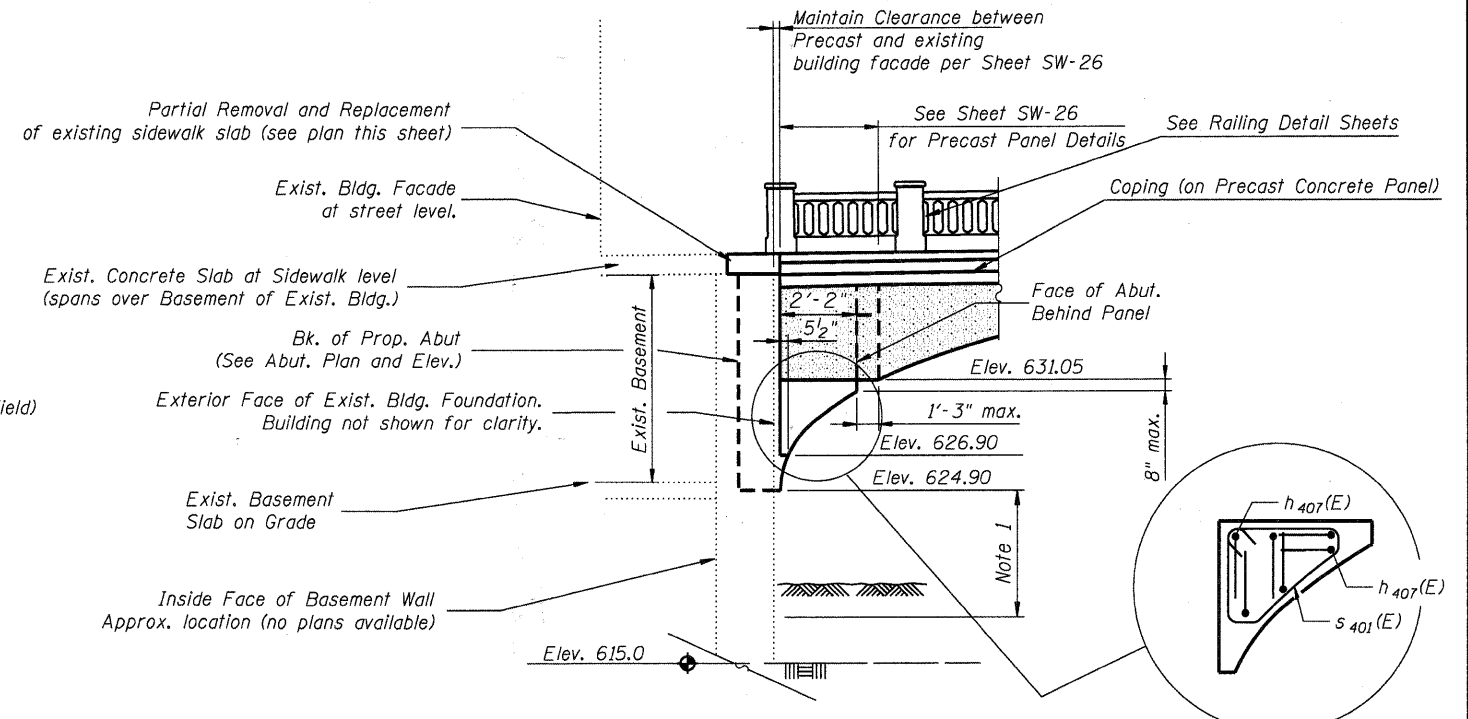


PLAN - N.E. CORNER OF EAST ABUTMENT
Railing not shown for clarity

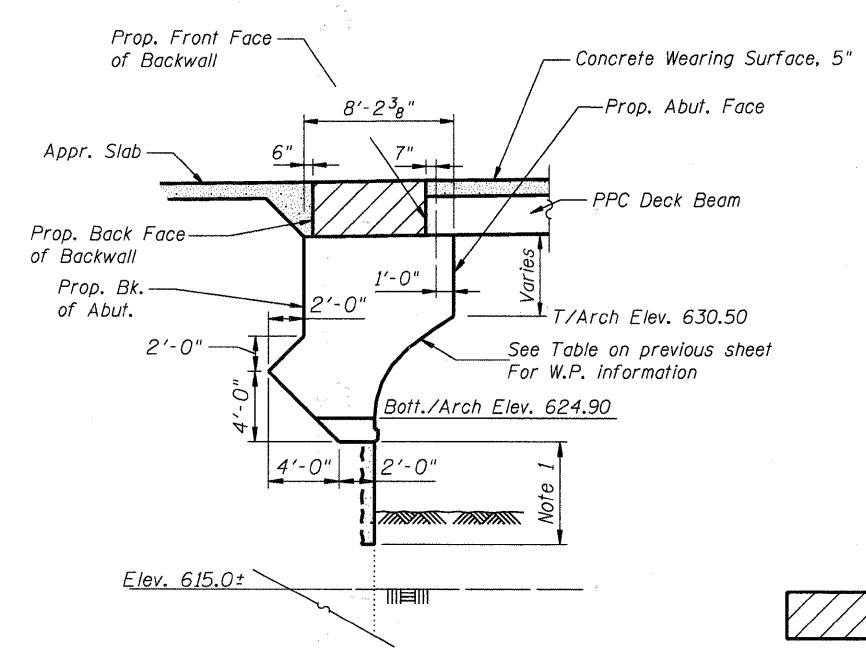


SECTION D-D THRU EAST ABUTMENT
Horizontal Dimensions at Rt. L's

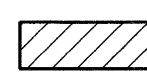


ELEVATION AT N.E. CORNER OF EAST ABUTMENT

Parallel to Roadway ϕ
Note: All existing basement info shown is a general representation, actual locations to be verified in the field



SECTION C-C THRU EAST ABUTMENT
Horizontal Dimensions at Rt. L's

 Concrete to be poured after all Deck Beams, Concrete Wearing Surface, Sidewalk and Approaches are installed.

Notes:
1. Structural Repair of Concrete, see Sheet SW-6.

HRGreen
Michael G. Harding
City of Aurora
8609472-#EAB/Mod.dgn
Struct 22434.tbl

HRGreen.com
Illinois Professional Design Firm
#194-001322

USER NAME = whood	DESIGNED - JMW	REVISED -
PLOT SCALE = N.T.S.	CHECKED - RGD	REVISED -
PLOT DATE = 7/26/2011	DRAWN - WJH	REVISED -
	CHECKED -	REVISED -

CITY OF AURORA
DOWNER PLACE OVER THE WEST BRANCH
OF THE FOX RIVER

NORTHEAST CORNER DETAILS
STRUCTURE NO. 045-6006
SHEET NO. SW-36 OF SW-48 SHEETS

F.A. RTE.	SECTION	COUNTY	TOTAL SHEETS	SHEET NO.
	07-00264-00-BR	KANE	164	88
CONTRACT NO. 63620				
ILLINOIS FED. AID PROJECT				