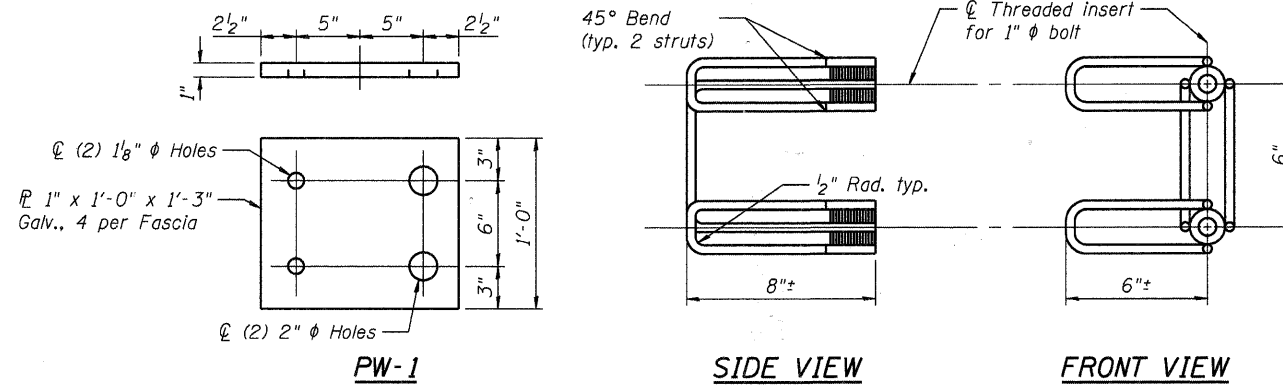


PLAN VIEW



DAYTON SUPERIOR F-41, 1"  $\phi$  x 8" WINGWALL INSERT

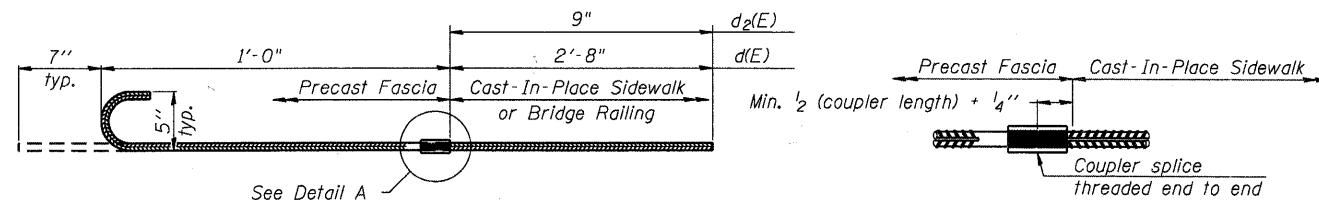
SECTION DIMENSION TABLE

	Left Side			Center Span			Right Side		
	A	B	C	D	E	F	A	B	C
S-1	4'-3 1/8"	5'-10 5/8"	7'-8 5/8"	2'-8 5/8"	1'-10 5/8"	3'-8 5/8"	4'-10 1/2"	6'-6"	8'-4"
S-2	5'-1"	6'-8 1/2"	8'-6 1/2"	3'-4 1/2"	2'-6 5/8"	4'-4 1/2"	5'-3 1/4"	6'-10 3/4"	8'-8 3/4"
S-3	5'-2 5/8"	6'-10 1/8"	8'-8 1/8"	3'-2 5/8"	2'-4 5/8"	4'-2 5/8"	4'-9 5/8"	6'-5 1/8"	8'-3 1/8"
N-1	5'-1 3/8"	6'-8 7/8"	8'-6 7/8"	3'-0 3/8"	2'-2 3/8"	4'-0 3/8"	N/A	N/A	N/A
N-2	5'-2 1/2"	6'-10"	8'-8"	3'-5"	2'-7 1/8"	4'-5"	5'-2 3/4"	6'-10 1/4"	8'-8 1/4"
N-3	4'-6 1/8"	6'-1 5/8"	7'-11 5/8"	2'-11 1/2"	2'-1 1/2"	3'-11 1/2"	5'-0 3/4"	6'-8 1/4"	8'-6 1/4"

U BAR DIMENSION TABLE

G	u <sub>1</sub> (E)	u <sub>2</sub> (E)	u <sub>3</sub> (E)	u <sub>4</sub> (E)	u <sub>5</sub> (E)	u <sub>6</sub> (E)	u <sub>7</sub> (E)	u <sub>8</sub> (E)	u <sub>9</sub> (E)	u <sub>10</sub> (E)	u <sub>11</sub> (E)
	2'-5"	2'-8"	2'-9"	2'-11"	3'-0"	3'-2"	3'-7"	3'-9"	4'-0"	4'-6"	4'-11"

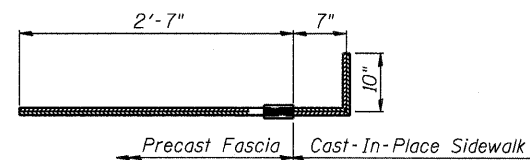
H	u <sub>12</sub> (E)	u <sub>13</sub> (E)	u <sub>14</sub> (E)	u <sub>15</sub> (E)	u <sub>16</sub> (E)	u <sub>17</sub> (E)	u <sub>18</sub> (E)	u <sub>19</sub> (E)	u <sub>20</sub> (E)	u <sub>21</sub> (E)	u <sub>22</sub> (E)	u <sub>23</sub> (E)
	6'-0"	6'-8"	6'-10"	7'-1"	7'-0"	6'-7"	6'-11"	6'-4"	7'-0"	7'-0"	6'-4"	6'-10"



#5 d(E) AND d<sub>2</sub>(E) BAR SPLICER ASSEMBLY FOR PRECAST FASCIA

DETAIL A

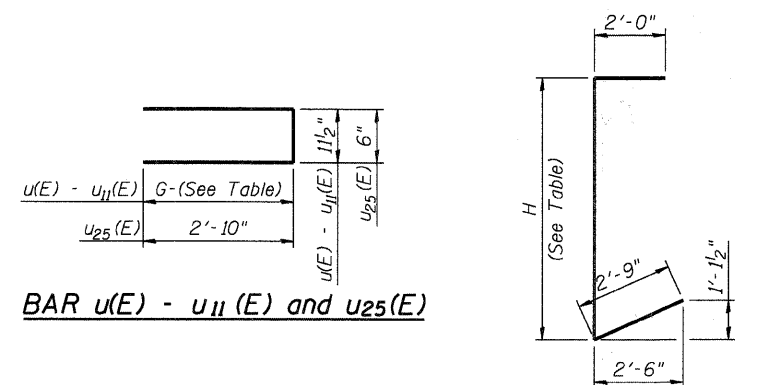
No. d(E) required = 229  
No. d<sub>2</sub>(E) required = 458



#5 d<sub>1</sub>(E) BAR SPLICER ASSEMBLY FOR PRECAST FASCIA

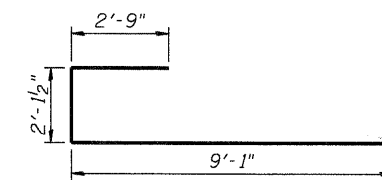
No. required = 12

Note:  
1. Precast concrete supplier is responsible for supplying complete bar splicer assemblies.

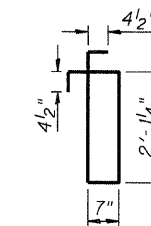


BAR u(E) - u<sub>11</sub>(E) and u<sub>25</sub>(E)

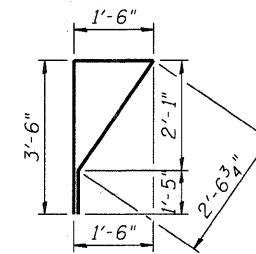
BAR u<sub>12</sub>(E) - u<sub>23</sub>(E)



BAR u<sub>24</sub>(E)



BAR s(E)



BAR s<sub>1</sub>(E)

SPANDREL PANEL REINFORCEMENT

Bar	No.	Size	Length	Shape
s(E)	24	#4	6'-1 1/2"	
s <sub>1</sub> (E)	220	#4	9'-0"	
p(E)	24	#7	20'-5"	
p <sub>1</sub> (E)	24	#7	19'-9"	
h(E)	92	#5	39'-6"	
h <sub>1</sub> (E)	4	#5	27'-9"	
u(E)	12	#4	5'-10"	
u <sub>1</sub> (E)	16	#4	6'-4"	
u <sub>2</sub> (E)	24	#4	6'-6"	
u <sub>3</sub> (E)	20	#4	6'-10"	
u <sub>4</sub> (E)	26	#4	7'-0"	
u <sub>5</sub> (E)	46	#4	7'-4"	
u <sub>6</sub> (E)	36	#4	8'-2"	
u <sub>7</sub> (E)	24	#4	8'-6"	
u <sub>8</sub> (E)	30	#4	9'-0"	
u <sub>9</sub> (E)	18	#4	10'-0"	
u <sub>10</sub> (E)	8	#4	10'-2"	
u <sub>11</sub> (E)	88	#4	10'-10"	
u <sub>12</sub> (E)	4	#5	10'-9"	
u <sub>13</sub> (E)	4	#5	11'-5"	
u <sub>14</sub> (E)	4	#5	11'-7"	
u <sub>15</sub> (E)	4	#5	11'-10"	
u <sub>16</sub> (E)	4	#5	11'-9"	
u <sub>17</sub> (E)	4	#5	11'-4"	
u <sub>18</sub> (E)	4	#5	11'-8"	
u <sub>19</sub> (E)	4	#5	11'-1"	
u <sub>20</sub> (E)	4	#5	11'-9"	
u <sub>21</sub> (E)	4	#5	11'-9"	
u <sub>22</sub> (E)	4	#5	11'-1"	
u <sub>23</sub> (E)	4	#5	11'-7"	
u <sub>24</sub> (E)	24	#6	13'-11 1/2"	
u <sub>25</sub> (E)	24	#4	6'-2"	

Approximate quantities for six (6) Spandrel Panels

HRGreen  
1104-001322

HRGreen.com  
Illinois Professional Design Firm  
#104-001322

USER NAME = whood	DESIGNED - SSM	REVISIONS -
PLOT SCALE = N.T.S.	CHECKED - RGD	REVISIONS -
PLOT DATE = 7/26/2011	DRAWN - WJH	REVISIONS -
	CHECKED -	REVISIONS -

CITY OF AURORA  
DOWNER PLACE OVER THE EAST BRANCH  
OF THE FOX RIVER

PRECAST CONCRETE FASCIA PANEL - SPANDREL  
STRUCTURE NO. 045-6005

SHEET NO. SE-23 OF SE-45 SHEETS

F.A. RTE.	SECTION	COUNTY	TOTAL SHEETS	SHEET NO.
	07-00264-00-BR	KANE	164	123
			CONTRACT NO.	63620
ILLINOIS FED. AID PROJECT				