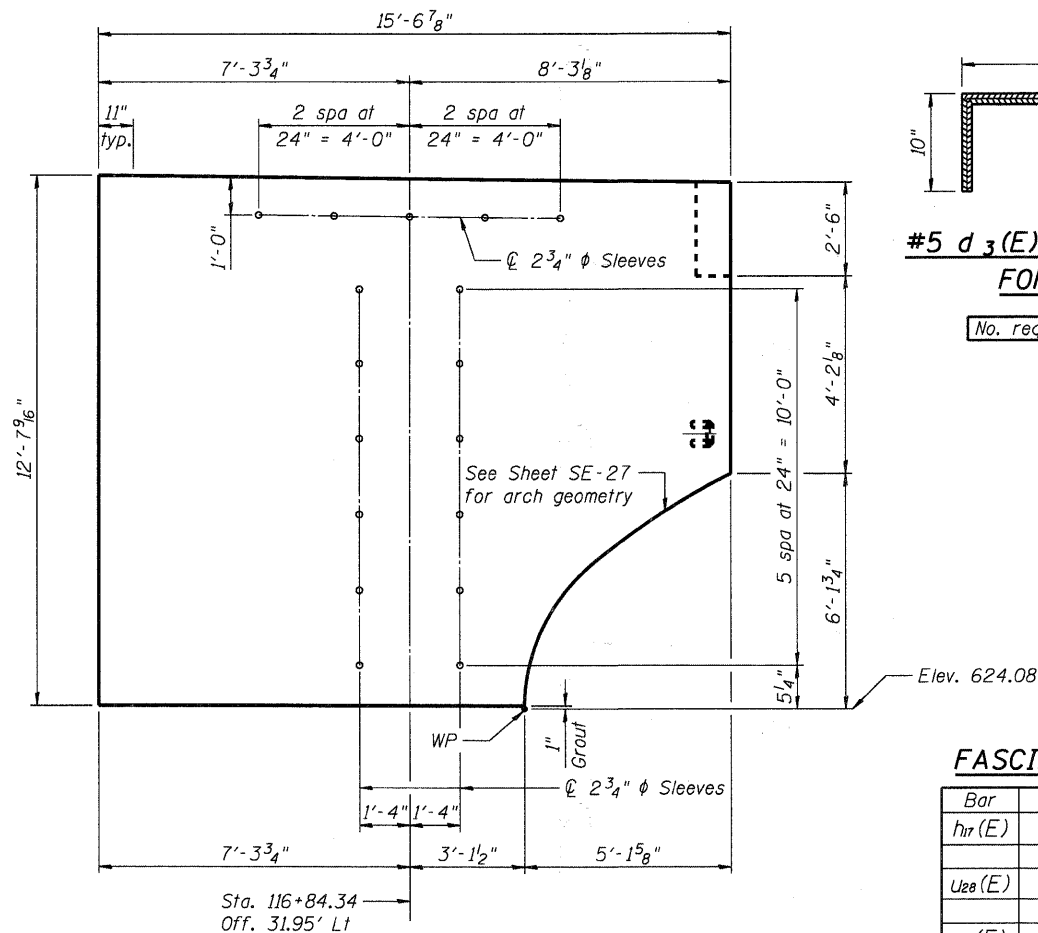
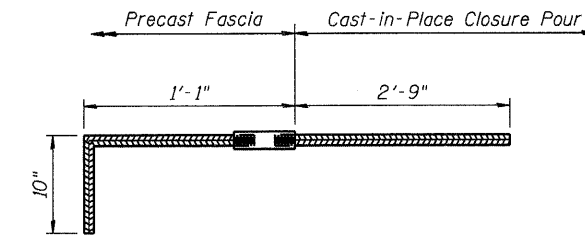


**BAR SPLICER LAYOUT**  
(46 Per Panel)

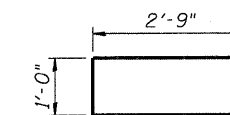


**PANEL ELEVATION - NEA**



**#5 d<sub>3</sub>(E) BAR SPLICER ASSEMBLY FOR PRECAST FASCIA**

No. required = 100 - Abutment Panels

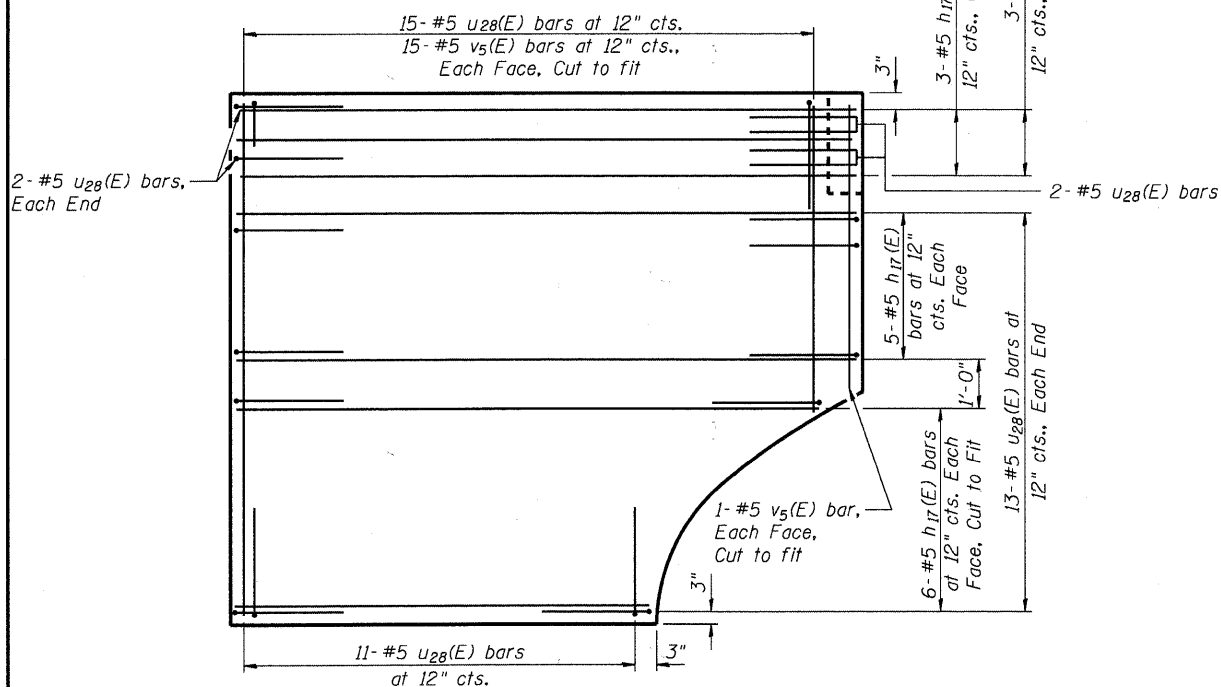


**BAR u<sub>28</sub>(E)**

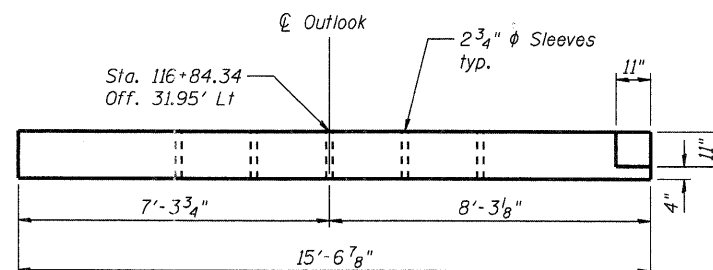
**FASCIA PANEL REINFORCEMENT**

Bar	No.	Size	Length	Shape
h <sub>17</sub> (E)	28	#5	15'-2"	—
u <sub>28</sub> (E)	41	#5	6'-6"	U
v <sub>5</sub> (E)	32	#5	12'-3"	—

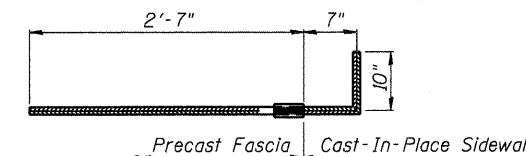
Approximate quantities for one (1) Fascia Panel



**PANEL ELEVATION - REBAR**

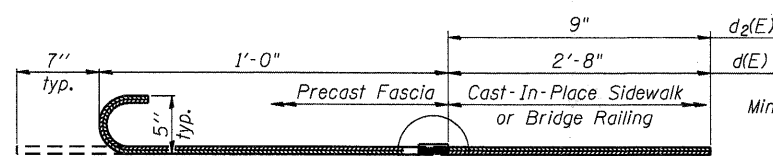


**PANEL PLAN - NEA**



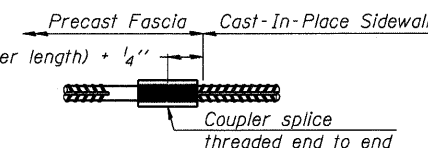
**#5 d<sub>1</sub>(E) BAR SPLICER ASSEMBLY FOR PRECAST FASCIA**

No. required = 7 - Abutment Panels



**#5 d(E) AND d<sub>2</sub>(E) BAR SPLICER ASSEMBLY FOR PRECAST FASCIA**

No. d(E) required = 4 - Abutment Panels  
No. d<sub>2</sub>(E) required = 18 - Abutment Panels



**DETAIL A**

HRGREEN  
COMPANY NAME: HRGreen  
PROJECT CONTACT: Michael G. Haralick  
DATE PLOTTED: 7/26/2011 11:05:16 AM  
FILE NAME: 86090412-E-PreFab.dgn  
PLOT DRIVER: pdfplot  
PEN TABLE: Struct 22x34.tbl



USER NAME = whood  
PLOT SCALE = N.T.S.  
PLOT DATE = 7/26/2011

DESIGNED - SSM  
CHECKED - RGD  
DRAWN - WJH  
CHECKED -

REVISED -  
REVISED -  
REVISED -  
REVISED -

**CITY OF AURORA**  
**DOWNER PLACE OVER THE EAST BRANCH**  
**OF THE FOX RIVER**

**PRECAST CONCRETE FASCIA PANEL - ABUTMENT**  
**STRUCTURE NO. 045-6005**

SHEET NO. SE-26 OF SE-45 SHEETS

F.A. RTE.	SECTION	COUNTY	TOTAL SHEETS	SHEET NO.
	07-00264-00-BR	KANE	164	126
CONTRACT NO. 63620				

ILLINOIS FED. AID PROJECT