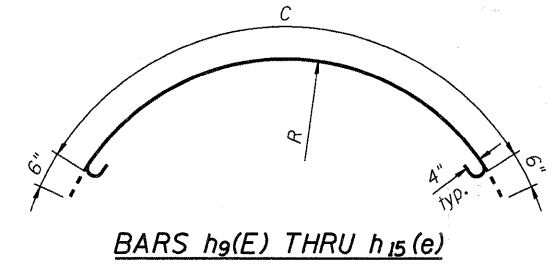
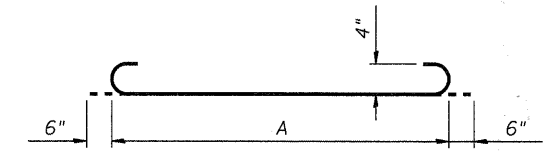


PLAN

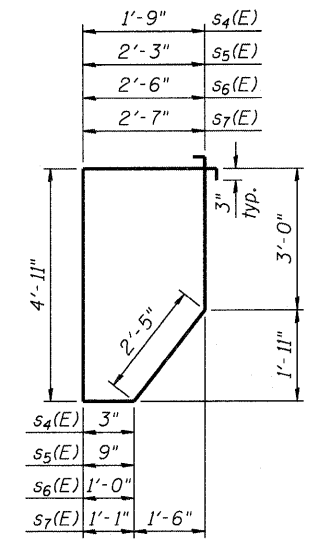
Note:
The Precaster may, at his option, Cast the Outlook Bottom and the Pier Fascia Panels as one piece. Submit reinforcement details for review and approval.



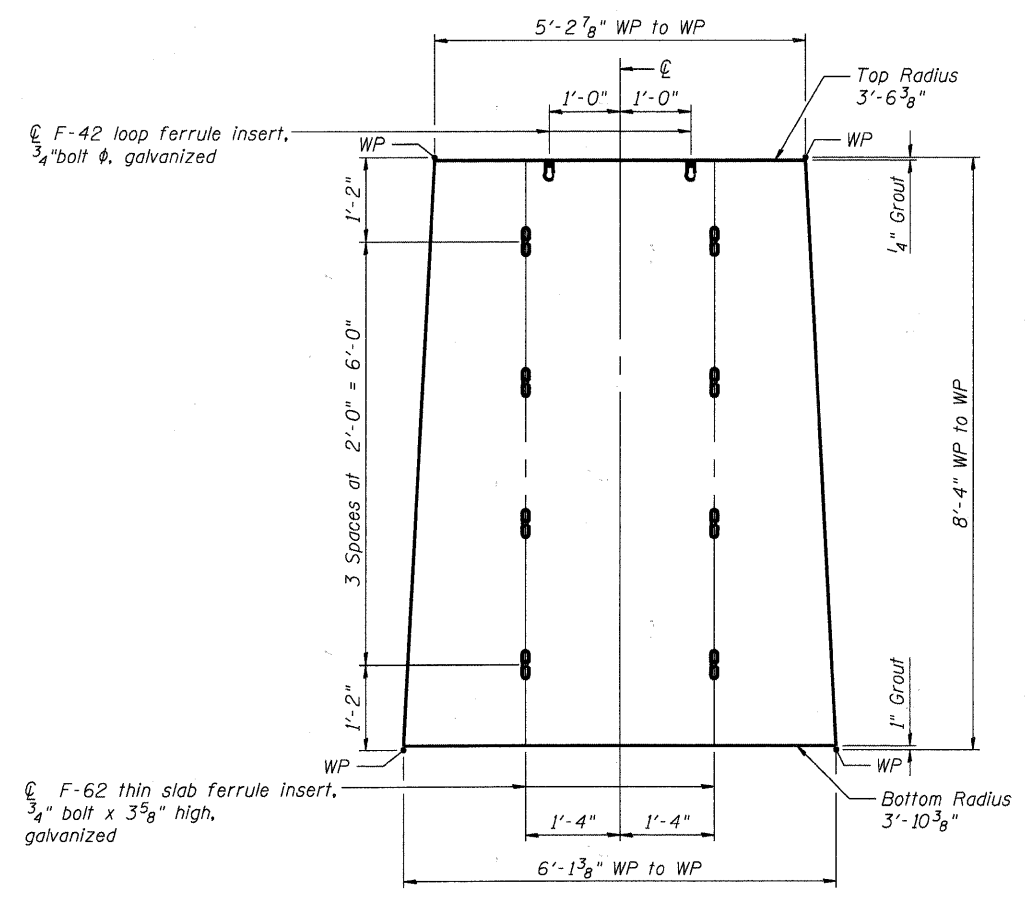
	$h_9(E)$	$h_{10}(E)$	$h_{11}(E)$	$h_{12}(E)$	$h_{13}(E)$	$h_{14}(E)$	$h_{15}(E)$
R	3'-7 1/4"	4'-3 3/4"	5'-0 1/2"	5'-7 1/4"	6'-2"	6'-10 1/4"	7'-6 1/2"
C	5'-0"	7'-8"	10'-2"	12'-0"	13'-10"	16'-1"	18'-4"



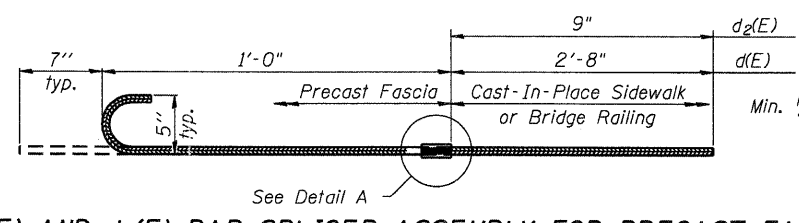
	$h_3(E)$	$h_4(E)$	$h_5(E)$	$h_6(E)$	$h_7(E)$	$h_8(E)$
A	4'-6"	6'-7"	8'-5"	9'-9"	11'-0"	12'-6"



BAR $s_4(E)$ THRU $s_7(E)$



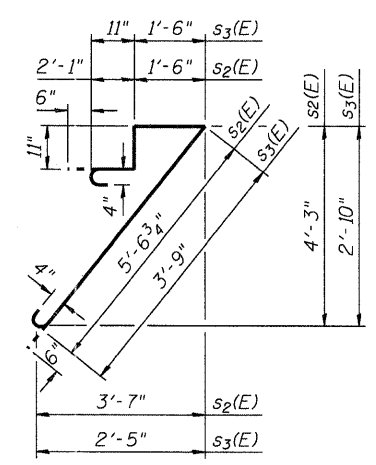
ELEVATION



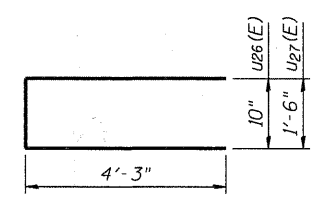
#5 $d(E)$ AND $d_2(E)$ BAR SPLICER ASSEMBLY FOR PRECAST FASCIA

No. $d(E)$ required = 85 - Outlooks
No. $d_2(E)$ required = 170 - Outlooks

DETAIL A



BARS $s_2(E)$ AND $s_3(E)$



BARS $u_{26}(E)$ AND $u_{27}(E)$

OUTLOOK REINFORCEMENT

Bar	No.	Size	Length	Shape
$s_2(E)$	75	#4	11'-0"	⌋
$s_3(E)$	10	#4	7'-2"	⌋
$s_4(E)$	10	#4	12'-10"	⌋
$s_5(E)$	10	#4	13'-10"	⌋
$s_6(E)$	10	#4	14'-4"	⌋
$s_7(E)$	5	#4	14'-6"	⌋
$h_3(E)$	5	#4	5'-6"	⌋
$h_4(E)$	5	#4	7'-7"	⌋
$h_5(E)$	5	#4	8'-5"	⌋
$h_6(E)$	5	#4	9'-9"	⌋
$h_7(E)$	5	#4	11'-0"	⌋
$h_8(E)$	5	#4	12'-6"	⌋
$h_9(E)$	10	#4	6'-0"	⌋
$h_{10}(E)$	5	#4	8'-8"	⌋
$h_{11}(E)$	20	#4	11'-2"	⌋
$h_{12}(E)$	5	#4	13'-0"	⌋
$h_{13}(E)$	15	#4	14'-10"	⌋
$h_{14}(E)$	10	#4	17'-1"	⌋
$h_{15}(E)$	5	#4	19'-4"	⌋
$u_{26}(E)$	20	#4	9'-4"	⌋
$u_{27}(E)$	10	#4	10'-0"	⌋

Approximate quantities for five (5) Outlook Assemblies

COMPANY NAME: HRGreen
PROJECT CONTACT: HRGreen
DATE PLOTTED: 7/26/2011 11:05:46 AM
FILE NAME: 86990472-e-Pr-001102.dgn
PLOT DRIVER: pdf.plt
PEN TABLE: Struct 22x34.tbl

HRGreen.com
Illinois Professional Design Firm
#194-001322

USER NAME = whood	DESIGNED - SSM	REVISED -
PLOT SCALE = N.T.S.	CHECKED - RGD	REVISED -
PLOT DATE = 7/26/2011	DRAWN - WJH	REVISED -
	CHECKED -	REVISED -

CITY OF AURORA
DOWNER PLACE OVER THE EAST BRANCH
OF THE FOX RIVER

PRECAST CONCRETE OUTLOOK - BOTTOM DETAILS
STRUCTURE NO. 045-6005

SHEET NO. SE-29 OF SE-45 SHEETS

F.A. RTE.	SECTION	COUNTY	TOTAL SHEETS	SHEET NO.
	07-00264-00-BR	KANE	164	129
CONTRACT NO. 63620			ILLINOIS FED. AID PROJECT	