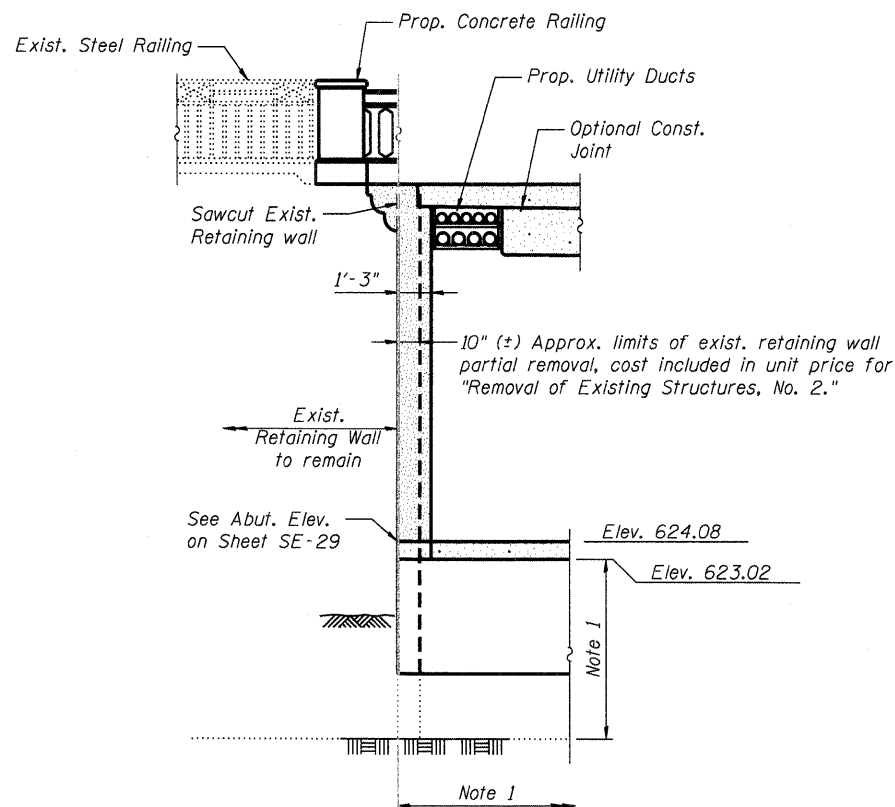
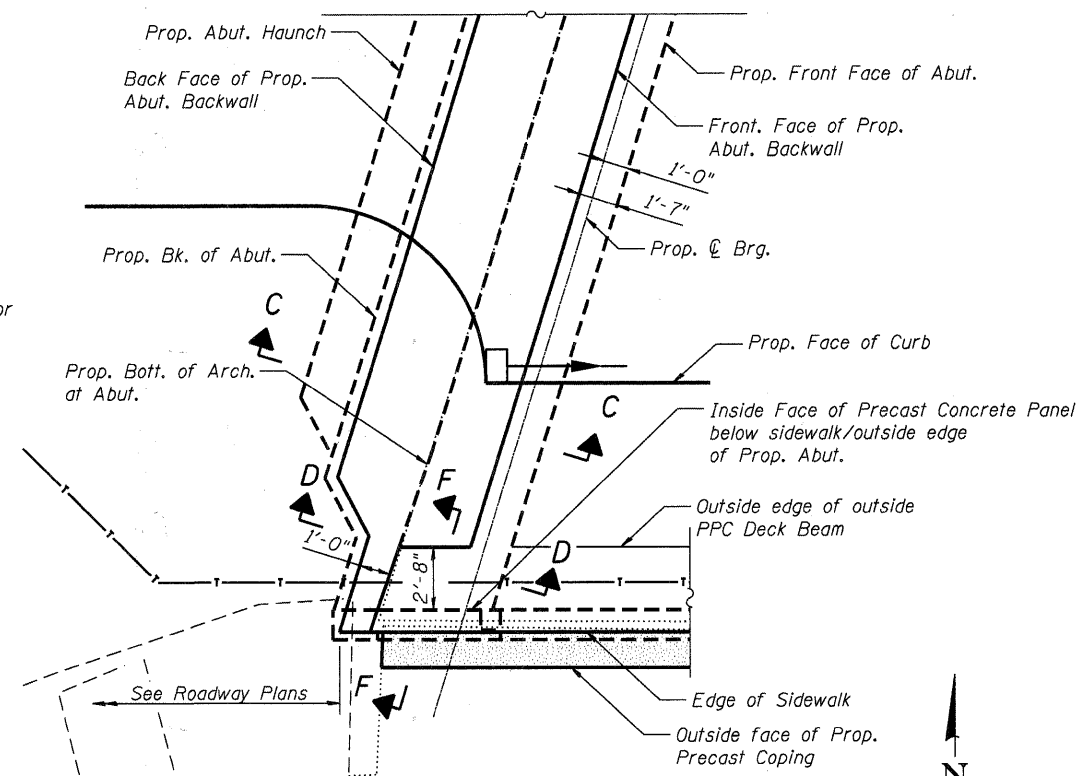


ELEVATION AT S.W. CORNER OF WEST ABUTMENT

Parallel to Roadway \oslash
Railing not shown for clarity

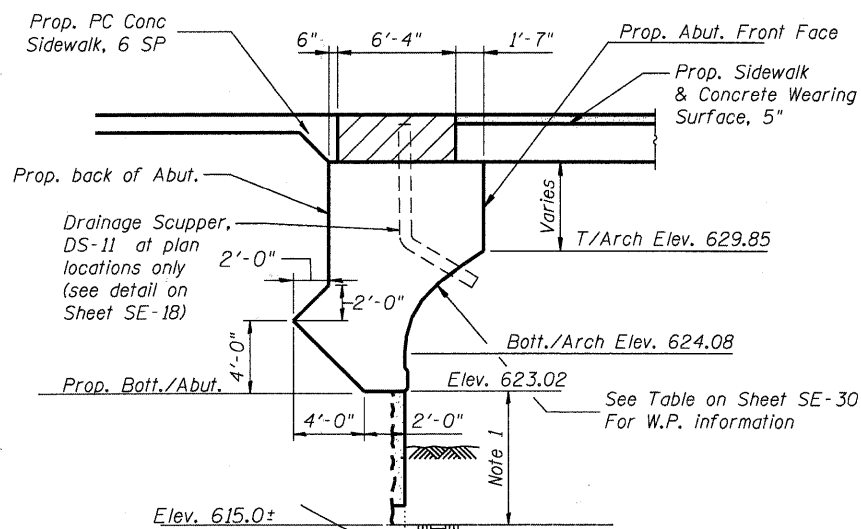
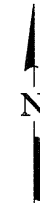


SECTION F-F



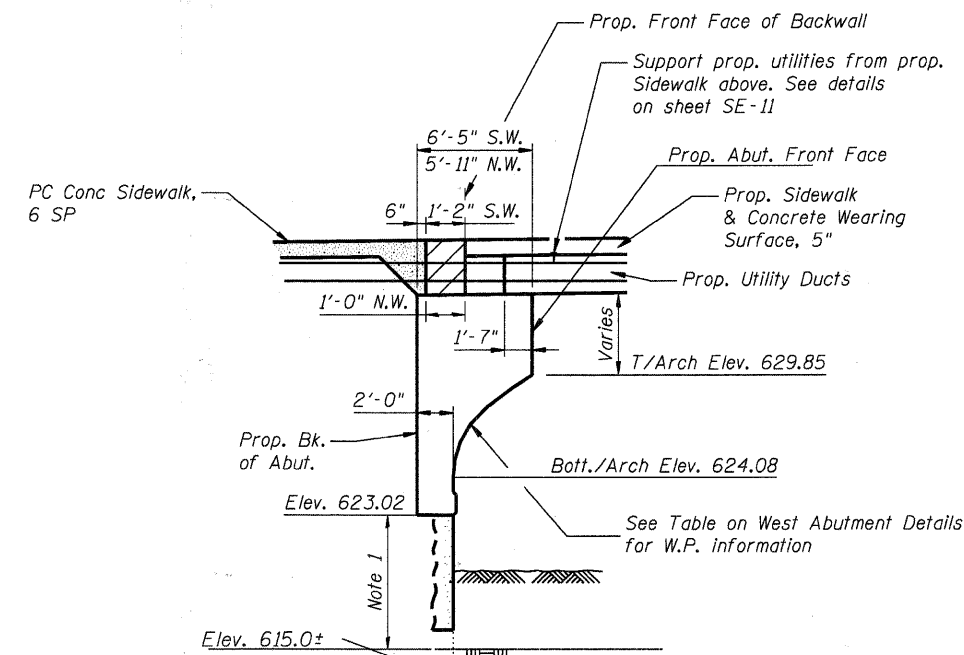
PLAN - S.W. CORNER OF WEST ABUTMENT

Railing not shown for clarity



SECTION C-C THRU ABUTMENT

Horizontal Dimensions at Rt. L's



SECTION D-D THRU ABUTMENT

Horizontal Dimensions at Rt. L's

S.W. = Southwest Corner
N.W. = Northwest Corner (for dimensions that are different at N.W. corner)

Notes:
1. Structural Repair of Concrete, See SE-6.

COMPANY NAME: HRGreen
PROJECT CONTACT: Mark G. Harding
CLIENT: City of Aurora
DATE PLOTTED: 7/26/2011 11:06:04 AM
FILE NAME: 06090472-a-b015cc-00
PLOT DRIVER: pdfplot
PEN TABLE: Struct 22x34.tbl



USER NAME = whoad	DESIGNED - JMW	REVISED -
PLOT SCALE = N.T.S.	CHECKED - RGD	REVISED -
PLOT DATE = 7/26/2011	DRAWN - WJH	REVISED -
	CHECKED -	REVISED -

CITY OF AURORA
DOWNER PLACE OVER THE EAST BRANCH
OF THE FOX RIVER

SOUTHWEST CORNER DETAILS
STRUCTURE NO. 045-6005

SHEET NO. SE-33 OF SE-45 SHEETS

F.A. RTE.	SECTION	COUNTY	TOTAL SHEETS	SHEET NO.
	07-00264-00-BR	KANE	164	133
				CONTRACT NO. 63620
ILLINOIS FED. AID PROJECT				