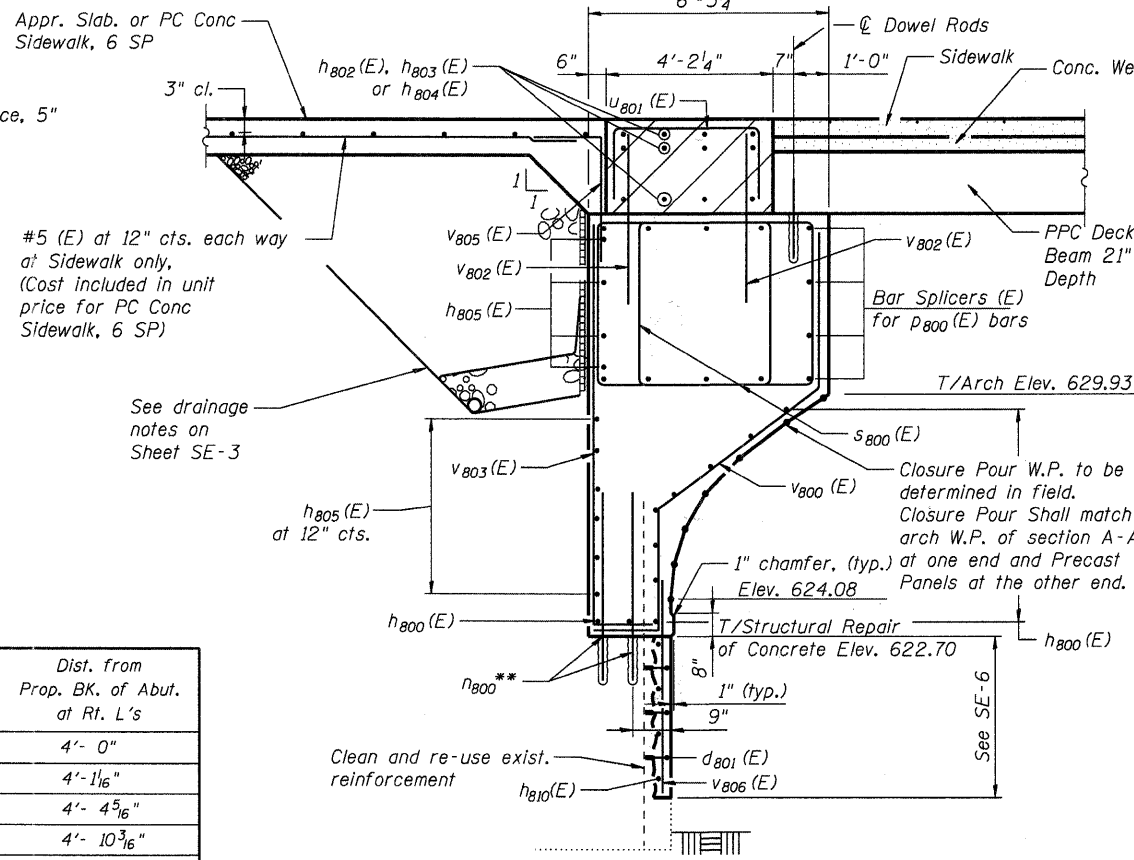


**SECTION A-A THRU ABUTMENT**  
Horizontal Dimensions at Rt. L's



**SECTION B-B THRU ABUTMENT**  
Horizontal Dimensions at Rt. L's

W.P. Height from Elev. 624.08	Dist. From Prop. BK. of Abut. at Rt. L's
0"	4'- 0"
1'- 0"	4'- 1 1/16"
2'- 0"	4'- 4 5/16"
3'- 0"	4'- 10 3/16"
4'- 0"	5'- 7 13/16"
5'- 0"	6'- 10 13/16"
5'- 9 5/16"	8'- 2 5/8"

**EAST ABUTMENT  
BILL OF MATERIAL**

Bar	No.	Size	Length	Shape
d <sub>800</sub> (E)	30	#5	2'- 7"	U
d <sub>801</sub> (E)	280	#4	1'- 4"	L
h <sub>800</sub> (E)	48	#5	20'- 9"	—
h <sub>801</sub> (E)	16	#5	6'- 5"	—
h <sub>802</sub> (E)	28	#5	30'- 11"	—
h <sub>803</sub> (E)	14	#5	10'- 4"	—
h <sub>804</sub> (E)	8	#5	5'- 3"	—
h <sub>805</sub> (E)	10	#5	7'- 9"	—
h <sub>806</sub> (E)	15	#5	10'- 9"	—
h <sub>807</sub> (E)	30	#6	14'- 0"	—
h <sub>808</sub> (E)	24	#5	6'- 6"	—
h <sub>809</sub> (E)	41	#5	6'- 1"	—
h <sub>810</sub> (E)	24	#5	24'- 1"	—
h <sub>811</sub> (E)	15	#5	7'- 9"	—
h <sub>812</sub> (E)	6	#5	5'- 3"	L
h <sub>800</sub>	88	#5	1'- 10"	—
h <sub>801</sub>	42	#8	4'- 10"	—
h <sub>802</sub> (E)	8	#5	9'- 4"	—
h <sub>803</sub> (E)	8	#5	9'- 4"	—
h <sub>804</sub>	12	#5	1'- 10"	—
h <sub>800</sub> (E)	54	#7	19'- 7"	—
s <sub>800</sub> (E)	130	#5	19'- 11"	—
s <sub>801</sub> (E)	4	#5	9'- 9"	—
u <sub>800</sub> (E)	60	#5	10'- 0"	—
u <sub>801</sub> (E)	5	#5	9'- 1"	—
u <sub>802</sub> (E)	6	#5	12'- 3"	—
u <sub>803</sub> (E)	6	#5	7'- 8"	—
v <sub>800</sub> (E)	65	#5	14'- 9"	—
v <sub>801</sub> (E)	55	#5	10'- 11"	—
v <sub>802</sub> (E)	130	#5	4'- 3"	—
v <sub>803</sub> (E)	8	#5	12'- 10"	L
v <sub>804</sub> (E)	26	#5	12'- 11"	—
v <sub>805</sub> (E)	65	#5	6'- 7"	L
v <sub>806</sub> (E)	73	#5	8'- 8"	—
v <sub>807</sub> (E)	4	#5	9'- 6"	L
Structure Excavation		Cu. Yd.	160.2	
Cofferdam (Location - 6)		Each	0.5	
Concrete Structures		Cu. Yd.	192.0	
Concrete Superstructure		Cu. Yd.	35.8	
Reinforcement Bars		Pound	740	
Reinforcement Bars, Epoxy Coated		Pound	14,350	
Bar Splicers		Each	51	
Concrete Sealer		Sq. Ft.	102	

For details of Bar Splicers, see sheet SE-43

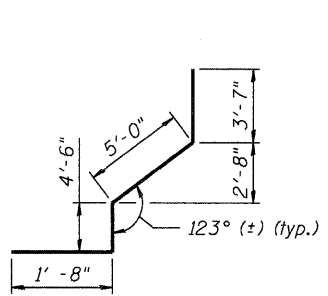
**Notes:**  
 \*\* = Drill and grout into existing concrete in conformance with Article 509.06 and furnish adhesive in conformance with Article 1027.01. The cost of drilling, cleaning and furnishing the adhesive shall be included under the contract unit price for "Reinforcement Bars" and will not be paid for separately. Follow the approved manufacturer's instructions except that the following minimum hole sizes and adhesive embedment lengths shall govern if the manufacturer calls for less:

Rebar Size	Min. Hole Size	Min. Adhesive Embedment
#8	1 1/2" Dia. X 12" deep	10 1/2"
#5	3/4" Dia. X 7 1/2" deep	6 1/2"

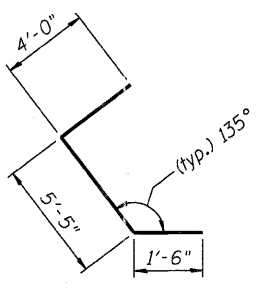
For #8 bars at existing buttress locations:  
 Exact layout and spacing of #8 h<sub>801</sub> Bars will be adjusted by Engineer based upon field conditions uncovered after the back of the existing abutment is excavated. The same configuration and number of anchored rebars is anticipated with spacing and distribution modified to fit existing conditions.

See Roadway Plan and Profile and Intersection Details for limits of Conc. Sidewalk, 6 SP. Reinforcement shall be included from back of abutment to 14'-0" from back of abutment or first joint if shown in plan.

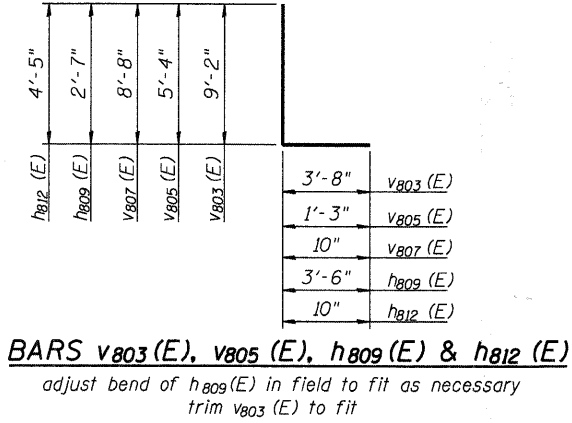
See Pouring sequence notes on previous sheet.



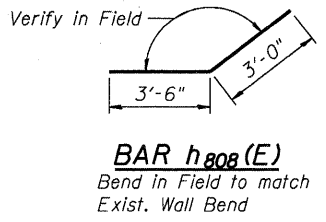
**BAR v<sub>800</sub>(E)**



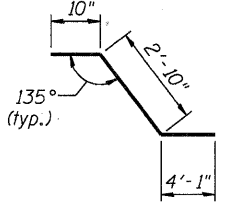
**BAR v<sub>801</sub>(E)**



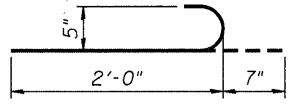
**BARS v<sub>803</sub>(E), v<sub>805</sub>(E), h<sub>809</sub>(E) & h<sub>812</sub>(E)**



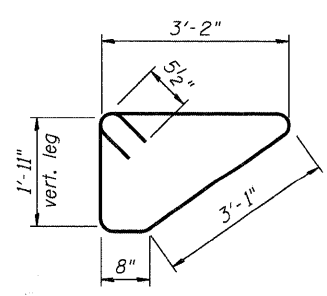
**BAR h<sub>808</sub>(E)**  
Bend in Field to match Exist. Wall Bend



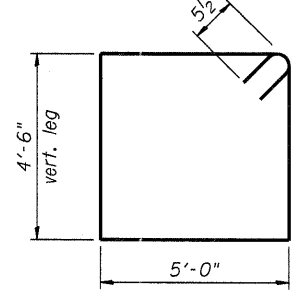
**BAR h<sub>805</sub>(E)**



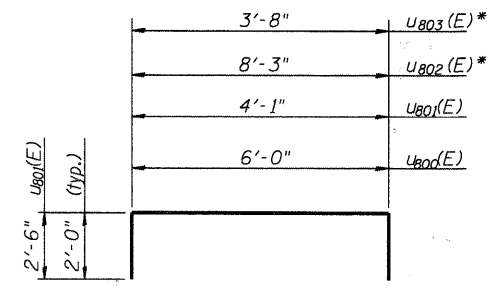
**BAR d<sub>800</sub>(E)**



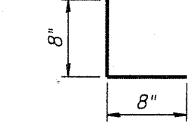
**BARS s<sub>801</sub>(E)**



**BARS s<sub>800</sub>(E)**



**BAR u<sub>800</sub>(E), u<sub>801</sub>(E), u<sub>802</sub>(E) & u<sub>803</sub>(E)**



**BAR d<sub>801</sub>(E)**

\* = bend to fit skew

COMPANY NAME: HRGreen  
 PROJECT CONTACT: Michael G. Harding  
 CLIENT: City of Aurora  
 DATE PLOTTED: 7/26/2011 11:06:15 AM  
 FILE NAME: 86090472-e-Abut1.dgn  
 PLOT DRIVER: pdf.plt  
 PEN TABLE: Struct 22x34.tbl

**HRGreen**  
 HRGreen.com  
 Illinois Professional Design Firm  
 #184-001322

USER NAME = whood	DESIGNED - JMW	REVISED -
CHECKED - RGD	CHECKED - RGD	REVISED -
PLOT SCALE = N.T.S.	DRAWN - WJH	REVISED -
PLOT DATE = 7/26/2011	CHECKED -	REVISED -

**CITY OF AURORA**  
**DOWNER PLACE OVER THE EAST BRANCH**  
**OF THE FOX RIVER**

**EAST ABUTMENT DETAILS**  
**STRUCTURE NO. 045-6005**  
 SHEET NO. SE-35 OF SE-45 SHEETS

F.A. RTE.	SECTION	COUNTY	TOTAL SHEETS	SHEET NO.
	07-00264-00-BR	KANE	164	135
			CONTRACT NO. 63620	
ILLINOIS FED. AID PROJECT				