

STANDARD BAR SPLICER ASSEMBLY

Minimum Lap Lengths (U.N.O.)					
Bar size to be spliced	Table 1	Table 2	Table 3	Table 4	Table 5
3, 4	1'-5"	1'-11"	2'-1"	2'-4"	2'-3"
5	1'-9"	2'-5"	2'-7"	2'-11"	2'-10"
6	2'-1"	2'-11"	3'-1"	3'-6"	3'-4"
7	2'-9"	3'-10"	4'-2"	4'-8"	4'-6"
8	3'-8"	5'-1"	5'-5"	6'-2"	5'-10"
9	4'-7"	6'-5"	6'-10"	7'-9"	7'-5"

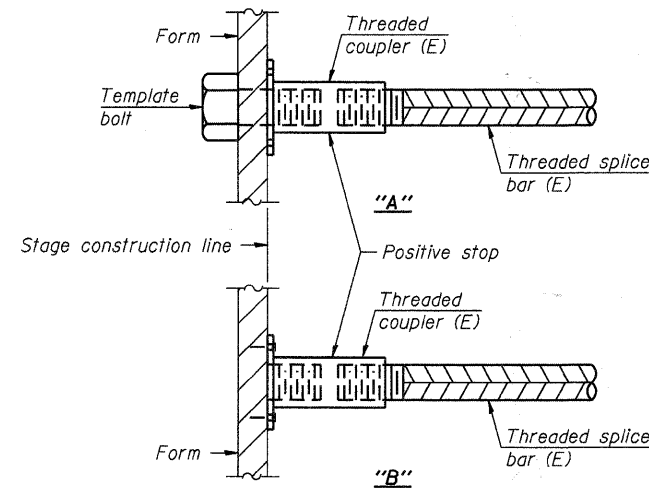
- Table 1: Black bar, 0.8 Class C
- Table 2: Black bar, Top bar lap, 0.8 Class C
- Table 3: Epoxy bar, 0.8 Class C
- Table 4: Epoxy bar, Top bar lap, 0.8 Class C
- Table 5: Epoxy bar, Top bar lap, Class B

Threaded splicer bar length = min. lap length + 1/2" + thread length

* Epoxy not required on Bar Splicer Assembly components used in conjunction with black bars.

Location	Bar size	No. assemblies required	Table for minimum lap length **
East Abutment	#5	21	4
East Abutment	#7	30	4, (6'-7")
West Abutment	#5	38	4
West Abutment	#7	24	4, (6'-7")
Pier 1	#6	184	4, (5'-4")
Pier 2	#6	184	4, (5'-4")
Conc. Wearing Surface	#4	258	3

** Lengths provided in () are for threaded splicer bar lengths to be used in closure pours.



INSTALLATION AND SETTING METHODS

- "A" : Set bar splicer assembly by means of a template bolt.
- "B" : Set bar splicer assembly by nailing to wood forms or cementing to steel forms.
- (E) : Indicates epoxy coating.

NOTES

Splicer bars shall be deformed with threaded ends and have a minimum 60 ksi yield strength.
 All reinforcement shall be lapped and tied to the splicer bars.
 Bar splicer assemblies shall be epoxy coated according to the requirements for reinforcement bars. See Section 508 of the Standard Specifications.
 See special provision for Mechanical Splicers.
 See approved list of bar splicer assemblies and mechanical splicers for alternatives.

COMPANY NAME: HRGreen
 PROJECT CONTACT: Michael G. Herding
 CLIENT: City of Aurora
 DATE PLOTTED: 7/26/2011 10:06:57 AM
 FILE NAME: 86000472-E-Bar.dgn
 PLOT DRIVER: pdfLdt
 PEN TABLE: Struct 22x34.tbl



USER NAME = whood	DESIGNED - MGH	REVISED -
	CHECKED - RGD	REVISED -
PLOT SCALE = N.T.S.	DRAWN - WJH	REVISED -
PLOT DATE = 7/26/2011	CHECKED -	REVISED -

**CITY OF AURORA
 DOWNER PLACE OVER THE WEST BRANCH
 OF THE FOX RIVER**

**BAR SPLICER ASSEMBLY AND MECHANICAL SPLICER DETAILS
 STRUCTURE NO. 045-6005**

SHEET NO. SE-43 OF SE-45 SHEETS

F.A. RTE.	SECTION	COUNTY	TOTAL SHEETS	SHEET NO.
	07-00264-00-BR	KANE	164	143
			CONTRACT NO. 63620	
ILLINOIS FED. AID PROJECT				