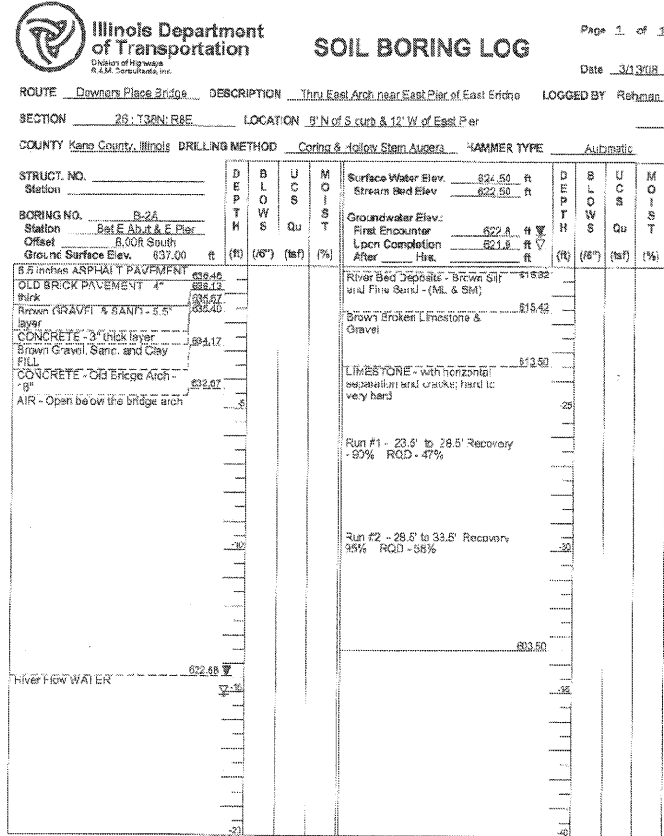
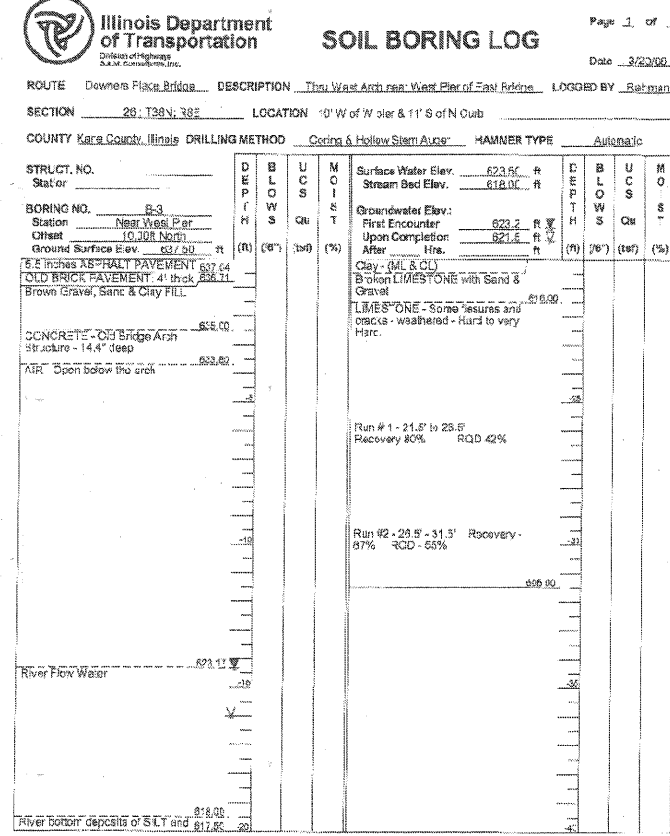


The Unconfined Compressive Strength (UCS) Failure Mode is indicated by (B-D) Dilge, (S) Shear, (P) Penetration.
 The SPT (N value) is the sum of the last two blow values in each sampling zone (ASTM D 1586).
 BBS, from 137 (Rev. 8-99)



The Unconfined Compressive Strength (UCS) Failure Mode is indicated by (B-D) Dilge, (S) Shear, (P) Penetration.
 The SPT (N value) is the sum of the last two blow values in each sampling zone (ASTM D 1586).
 BBS, from 137 (Rev. 8-99)



The Unconfined Compressive Strength (UCS) Failure Mode is indicated by (B-D) Dilge, (S) Shear, (P) Penetration.
 The SPT (N value) is the sum of the last two blow values in each sampling zone (ASTM D 1586).
 BBS, from 137 (Rev. 8-99)

HRGreen
 PROJECT CONTACT: Michael G. Harding
 CLIENT: City of Aurora
 DATE PLOTTED: 7/26/2011 11:07:00 AM
 FILE NAME: 8609047-E-SR01.dgn
 PLOT DRIVER: pdf.plt
 PEN TABLE: Struct 22x34.tbl



USER NAME = whoad	DESIGNED - MGH	REVISED -
PLOT SCALE = N.T.S.	CHECKED - RGD	REVISED -
PLOT DATE = 7/26/2011	DRAWN - WJH	REVISED -
	CHECKED -	REVISED -

CITY OF AURORA
DOWNER PLACE OVER THE EAST BRANCH
OF THE FOX RIVER

BORING LOGS
STRUCTURE NO. 045-6005
 SHEET NO. SE-44 OF SE-45 SHEETS

F.A. RTE.	SECTION	COUNTY	TOTAL SHEETS	SHEET NO.
	07-00264-00-BR	KANE	164	144
CONTRACT NO. 63620				
ILLINOIS FED. AID PROJECT				