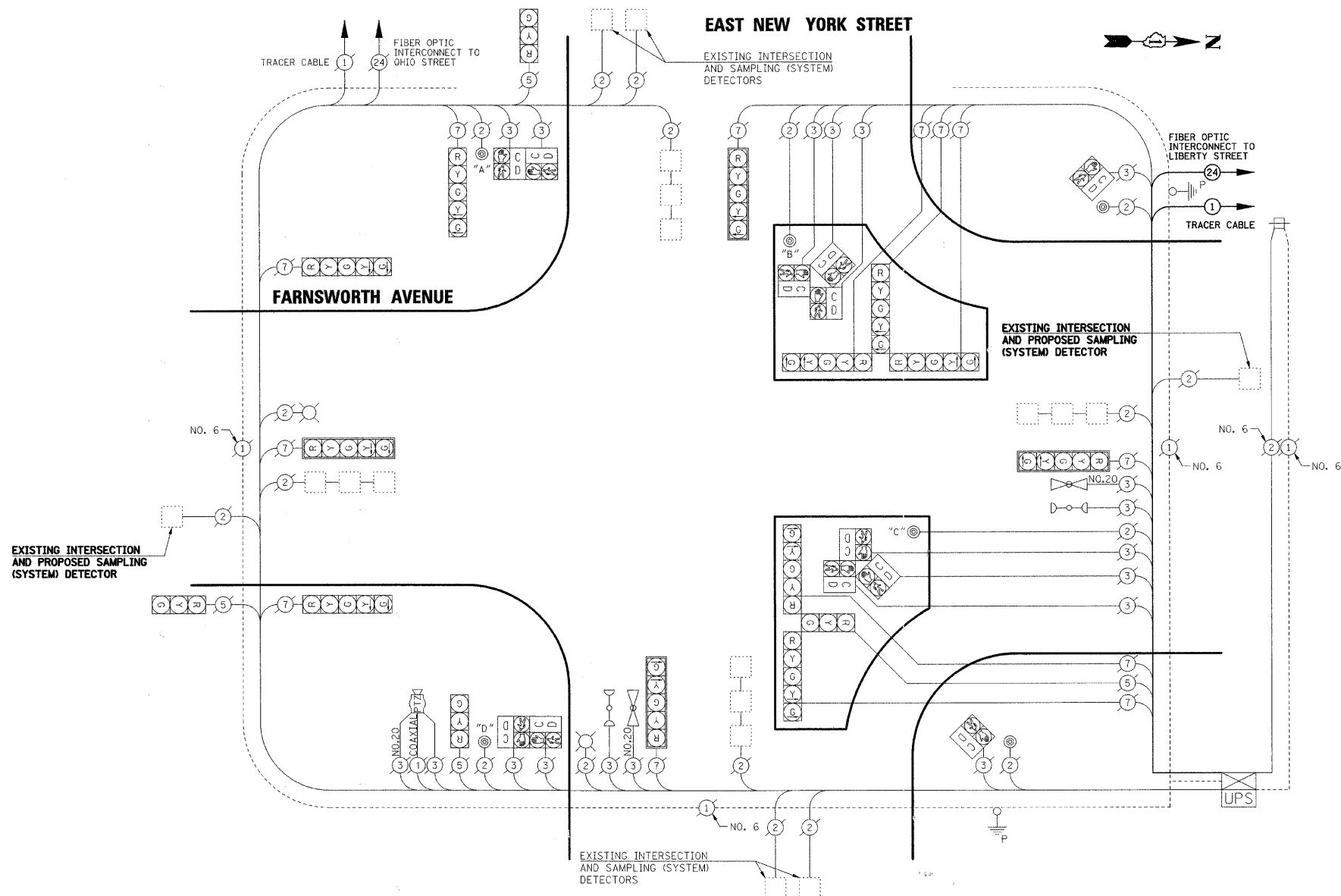


DATE	
BY	
PLAN	
NO.	
DATE	
BY	
PROFILE	
NO.	
DATE	
BY	
PROFILE	
NO.	

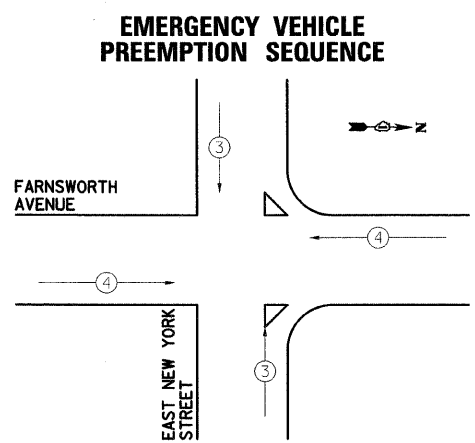
DATE	
BY	
PROFILE	
NO.	
DATE	
BY	
PROFILE	
NO.	



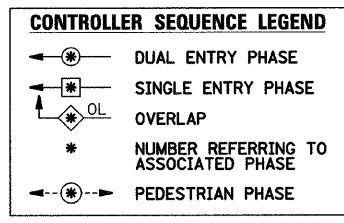
SCHEDULE OF QUANTITIES

PAY ITEM DESCRIPTION	UNIT	E. NEW YORK STREET
MAINTENANCE OF EXISTING TRAFFIC SIGNAL INSTALLATION	EACH	1
LIGHT DETECTOR AMPLIFIER	EACH	2

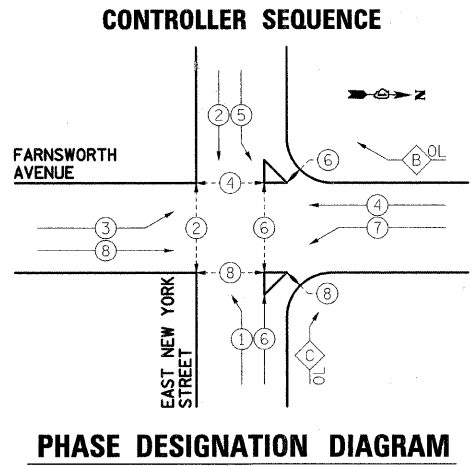
I.D.O.T TRAFFIC SIGNAL INSTALLATION ELECTRICAL SERVICE REQUIREMENTS				
TYPE	NO. LAMPS	WATTAGE		TOTAL WATTAGE
		INCAND.	LED	
SIGNAL (RED)	16	17	0.50	136
(YELLOW)	16	25	0.25	100
(GREEN)	16	15	0.25	60
ARROW	24	12	0.10	28.8
PED. SIGNAL	12	25	1.00	300
CONTROLLER	1	100	1.00	100
LUMINAIRE	2	250	0.50	250
TOTAL =				974.8
ENERGY COSTS TO: CITY OF AURORA 44 E. DOWNER PLACE AURORA, ILLINOIS 60507-2067				
ENERGY SUPPLY CONTACT: MARK SCHERIBEL PHONE: (630) 723-2128 COMPANY: COMMONWEALTH EDISON				



PROPOSED EMERGENCY VEHICLE PREEMPTORS	
PROPOSED EMERGENCY VEHICLE PREEMPTORS	3 4
MOVEMENT	↑ ↓ ← →



OVERLAP PHASE	PERMISSIVE PHASE	PROTECTED PHASE
B	= 4	+ 5
C	= 6	+ 7



THE END OF THE TRACER CABLE SHALL BE CONTINUOUS AND EXTEND INTO THE CONTROLLER CABINET.



USER NAME	= MF110r
DESIGNED	JRS
DRAWN	JRS
CHECKED	APS
DATE	-

DESIGNED	JRS	REVISED	-
DRAWN	JRS	REVISED	-
CHECKED	APS	REVISED	-
DATE	-	REVISED	-

STATE OF ILLINOIS
DEPARTMENT OF TRANSPORTATION

CABLE PLAN AND PHASE DESIGNATION DIAGRAM EAST NEW YORK STREET			
SCALE:	SHEET NO.	OF SHEETS	STA. TO STA.

F.A.P. RTE.	SECTION	COUNTY	TOTAL SHEETS	SHEET NO.
360	09-00289-00-TL	KANE	37	12
CONTRACT NO. 63627				
FED. ROAD DIST. NO. ILLINOIS FED. AID PROJECT				