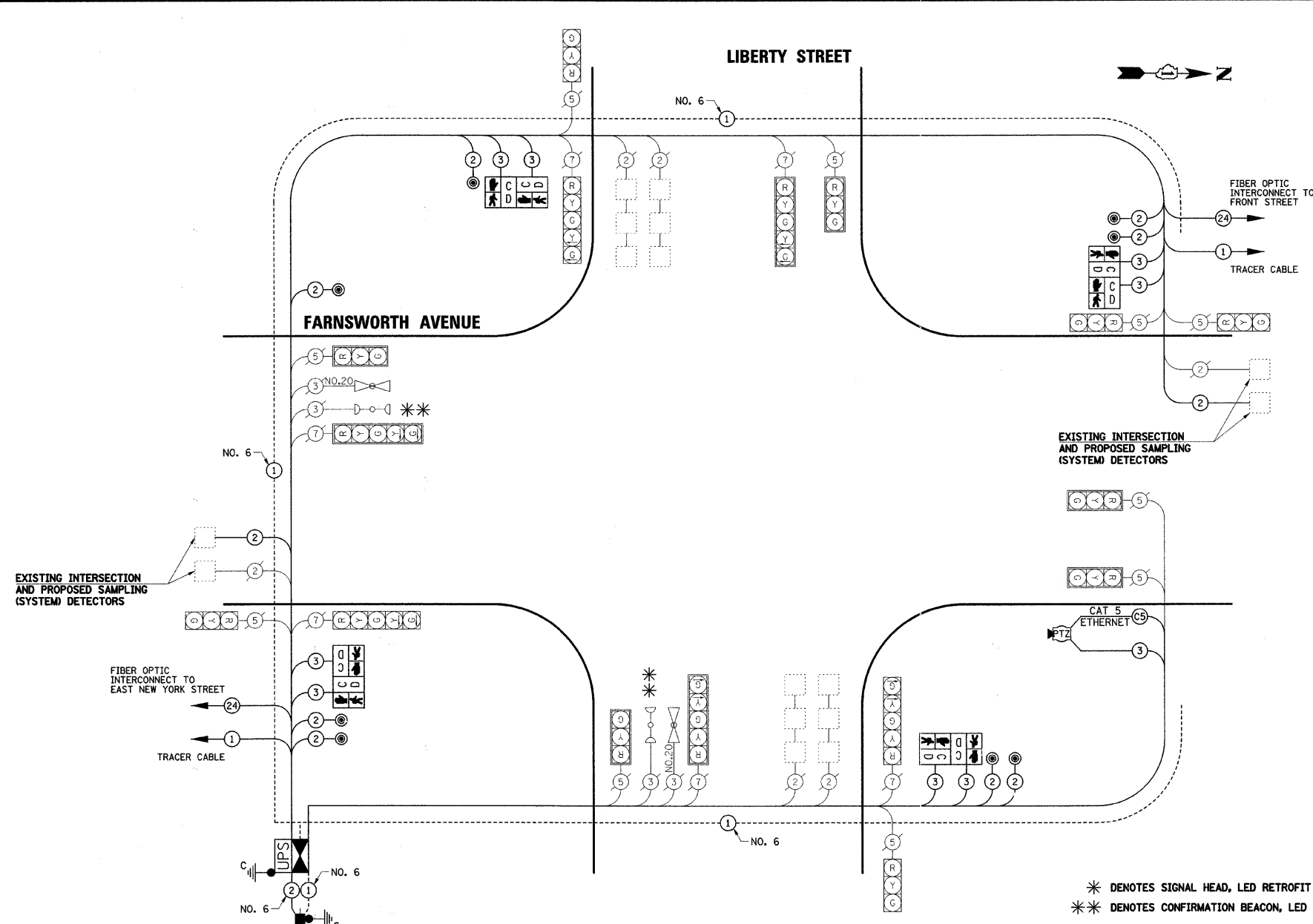


PLAN	SURVISED	DATE
	PLOTTED	
	NOTE BOOK	
	NO. 1	
	NO. 2	
	NO. 3	
	NO. 4	
	NO. 5	
	NO. 6	
	NO. 7	
	NO. 8	
	NO. 9	
	NO. 10	
	NO. 11	
	NO. 12	
	NO. 13	
	NO. 14	
	NO. 15	
	NO. 16	
	NO. 17	
	NO. 18	
	NO. 19	
	NO. 20	
	NO. 21	
	NO. 22	
	NO. 23	
	NO. 24	
	NO. 25	
	NO. 26	
	NO. 27	
	NO. 28	
	NO. 29	
	NO. 30	

PROFILE	SURVISED	DATE
	PLOTTED	
	NOTE BOOK	
	NO. 1	
	NO. 2	
	NO. 3	
	NO. 4	
	NO. 5	
	NO. 6	
	NO. 7	
	NO. 8	
	NO. 9	
	NO. 10	
	NO. 11	
	NO. 12	
	NO. 13	
	NO. 14	
	NO. 15	
	NO. 16	
	NO. 17	
	NO. 18	
	NO. 19	
	NO. 20	
	NO. 21	
	NO. 22	
	NO. 23	
	NO. 24	
	NO. 25	
	NO. 26	
	NO. 27	
	NO. 28	
	NO. 29	
	NO. 30	



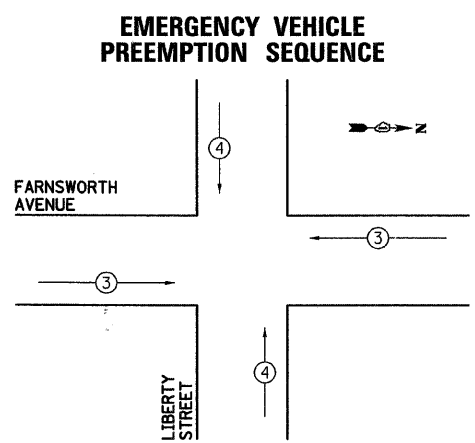
SCHEDULE OF QUANTITIES

PAY ITEM DESCRIPTION	UNIT	LIBERTY STREET
SERVICE INSTALLATION - POLE MOUNTED	EACH	1
MAINTENANCE OF EXISTING TRAFFIC SIGNAL INSTALLATION	EACH	1
FULL-ACTUATED CONTROLLER AND TYPE IV CABINET, SPECIAL	EACH	1
UNINTERRUPTABLE POWER SUPPLY	EACH	1
GROUNDING EXISTING HANDHOLE FRAME AND COVER	EACH	6
ELECTRIC CABLE IN CONDUIT, SIGNAL NO. 14 2C	FOOT	1284
ELECTRIC CABLE IN CONDUIT, SIGNAL NO. 14 3C	FOOT	1504.5
ELECTRIC CABLE IN CONDUIT, LEAD-IN, NO. 14 1 PAIR	FOOT	1162
ELECTRIC CABLE IN CONDUIT, SERVICE, NO. 6 2 C	FOOT	49.5
ELECTRIC CABLE IN CONDUIT, EQUIPMENT GROUNDING CONDUCTOR, NO. 6 1C	FOOT	542.5
PEDESTRIAN SIGNAL HEAD, LED, 2-FACE, BRACKET MOUNTED WITH COUNTDOWN TIMER	EACH	4
INDUCTIVE LOOP DETECTOR	EACH	8
DETECTOR LOOP, TYPE I	FOOT	40
LIGHT DETECTOR AMPLIFIER	EACH	2
PEDESTRIAN PUSH-BUTTON	EACH	8
MODIFY EXISTING CONTROLLER FOUNDATION	EACH	1
REMOVE ELECTRIC CABLE FROM CONDUIT	FOOT	1931
REMOVE EXISTING TRAFFIC SIGNAL EQUIPMENT	EACH	1
CAT 5 ETHERNET CABLE	FOOT	146.5
INTERSECTION VIDEO TRAFFIC MONITORING SYSTEM WITH PTZ CAMERA	EACH	1
EVP CONFIRMATION BEACON, LED RETROFIT	EACH	2

I.D.O.T TRAFFIC SIGNAL INSTALLATION ELECTRICAL SERVICE REQUIREMENTS				
TYPE	NO. LAMPS	WATTAGE		TOTAL WATTAGE
		INCAND.	LED	
SIGNAL (RED)	16	17	0.50	136
(YELLOW)	16	25	0.25	100
(GREEN)	16	15	0.25	60
ARROW	12	12	0.10	14.4
PED. SIGNAL	8	25	1.00	200
CONTROLLER	1	100	1.00	100
TOTAL =				610.4

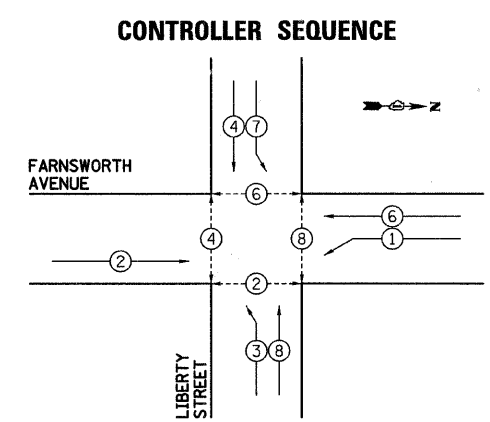
ENERGY COSTS TO: CITY OF AURORA
44 E. DOWNER PLACE
AURORA, ILLINOIS 60507-2067

ENERGY SUPPLY CONTACT: MARK SCHERIBEL
PHONE: (630) 723-2128
COMPANY: COMMONWEALTH EDISON



PROPOSED EMERGENCY VEHICLE PREEMPTORS	
PROPOSED EMERGENCY VEHICLE PREEMPTORS	3 4
MOVEMENT	← →

CONTROLLER SEQUENCE LEGEND	
← *	DUAL ENTRY PHASE
← *	SINGLE ENTRY PHASE
← *	OVERLAP
*	NUMBER REFERRING TO ASSOCIATED PHASE
← *	PEDESTRIAN PHASE



THE END OF THE TRACER CABLE SHALL BE CONTINUOUS AND EXTEND INTO THE CONTROLLER CABINET.

THE TRAFFIC SIGNAL CONTROL EQUIPMENT FOR THIS PROJECT SHALL BE "ECONOLITE" TO MATCH THE EXISTING ADJACENT SYSTEM.