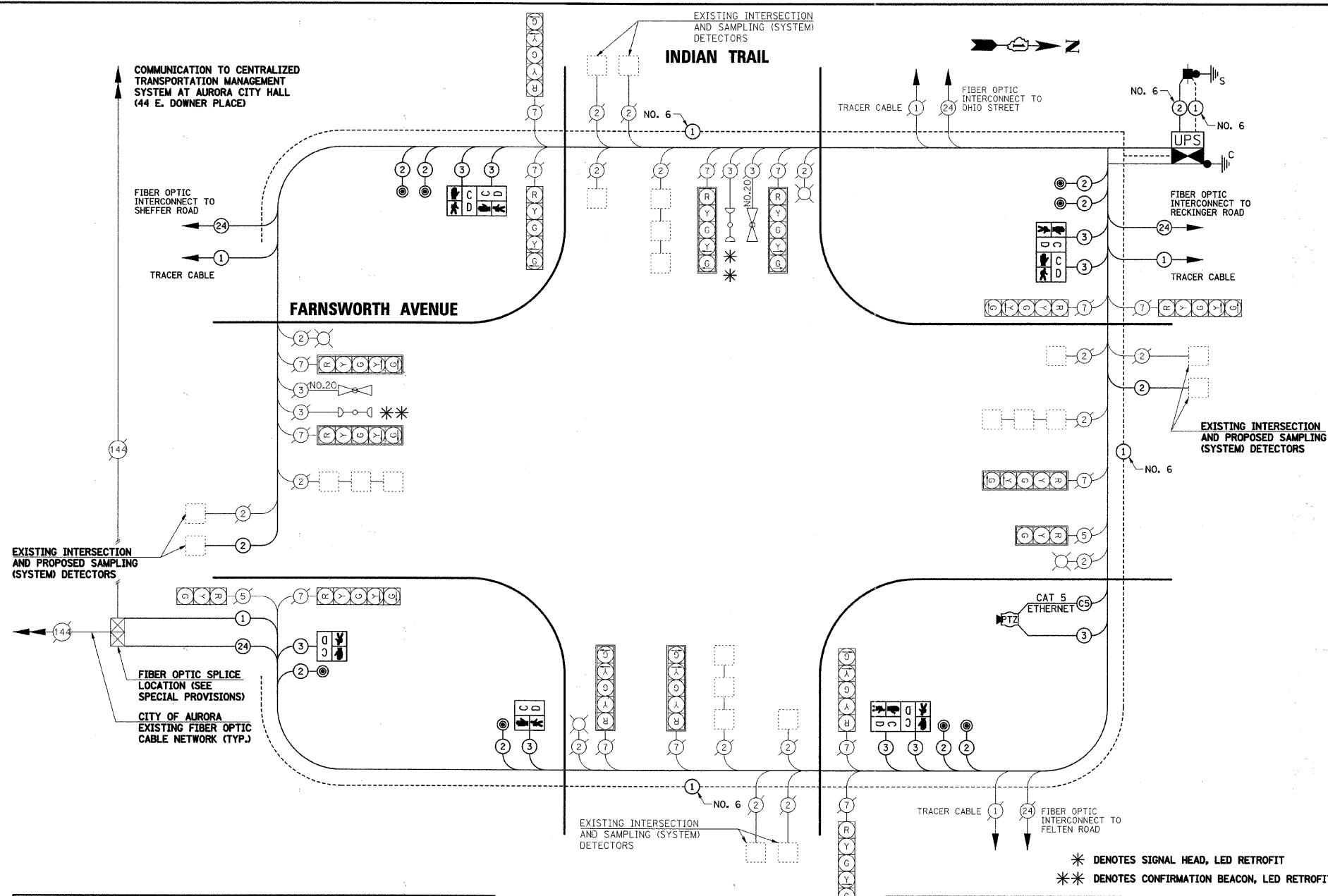


DATE	
BY	
PLAN	
NO.	
DATE	
BY	
PROFILE	
NO.	
DATE	
BY	
PROFILE	
NO.	

DATE	
BY	
PROFILE	
NO.	
DATE	
BY	
PROFILE	
NO.	



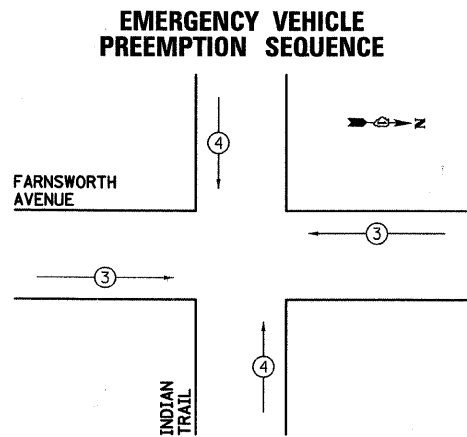
### SCHEDULE OF QUANTITIES

PAY ITEM DESCRIPTION	UNIT	INDIAN TRAIL
SERVICE INSTALLATION - POLE MOUNTED	EACH	1
MAINTENANCE OF EXISTING TRAFFIC SIGNAL INSTALLATION	EACH	1
FULL-ACTUATED CONTROLLER AND TYPE IV CABINET, SPECIAL	EACH	1
UNINTERRUPTABLE POWER SUPPLY	EACH	1
GROUNDING EXISTING HANDHOLE FRAME AND COVER	EACH	4
ELECTRIC CABLE IN CONDUIT, SIGNAL NO. 14 2C	FOOT	1409
ELECTRIC CABLE IN CONDUIT, SIGNAL NO. 14 3C	FOOT	1653.5
ELECTRIC CABLE IN CONDUIT, LEAD-IN, NO. 14 1 PAIR	FOOT	1151
ELECTRIC CABLE IN CONDUIT, SERVICE, NO. 6 2 C	FOOT	28.5
ELECTRIC CABLE IN CONDUIT, EQUIPMENT GROUNDING CONDUCTOR, NO. 6 1C	FOOT	623.5
PEDESTRIAN SIGNAL HEAD, LED, 1-FACE, BRACKET MOUNTED WITH COUNTDOWN TIMER	EACH	2
PEDESTRIAN SIGNAL HEAD, LED, 2-FACE, BRACKET MOUNTED WITH COUNTDOWN TIMER	EACH	3
INDUCTIVE LOOP DETECTOR	EACH	15
DETECTOR LOOP, TYPE I	FOOT	40
LIGHT DETECTOR AMPLIFIER	EACH	2
PEDESTRIAN PUSH-BUTTON	EACH	8
MODIFY EXISTING CONTROLLER FOUNDATION	EACH	1
REMOVE ELECTRIC CABLE FROM CONDUIT	FOOT	2456
REMOVE EXISTING TRAFFIC SIGNAL EQUIPMENT	EACH	1
CAT 5 ETHERNET CABLE	FOOT	188.5
INTERSECTION VIDEO TRAFFIC MONITORING SYSTEM WITH PTZ CAMERA	EACH	1
EVP CONFIRMATION BEACON, LED RETROFIT	EACH	2

I.D.O.T TRAFFIC SIGNAL INSTALLATION ELECTRICAL SERVICE REQUIREMENTS					TOTAL WATTAGE
TYPE	NO. LAMPS	WATTAGE	% OPERATION		
SIGNAL (RED) (YELLOW) (GREEN)	16	17	0.50	136	
	16	25	0.25	100	
	16	15	0.25	60	
ARROW	28	12	0.10	33.6	
PED. SIGNAL	8	25	1.00	200	
CONTROLLER	1	100	1.00	100	
LUMINAIRE	4	250	0.50	500	
TOTAL =				1129.6	

ENERGY COSTS TO: CITY OF AURORA  
44 E. DOWNER PLACE  
AURORA, ILLINOIS 60507-2067

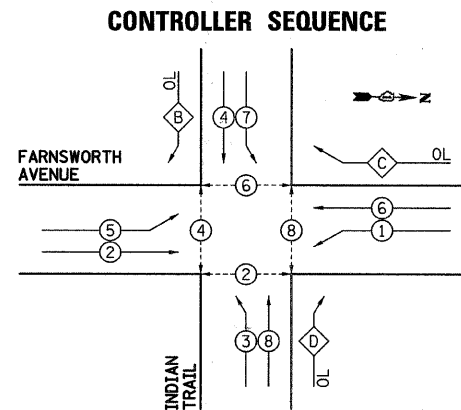
ENERGY SUPPLY CONTACT: MARK SCHERIBEL  
PHONE: (630) 723-2128  
COMPANY: COMMONWEALTH EDISON



PROPOSED EMERGENCY VEHICLE PREEMPTORS		
PROPOSED EMERGENCY VEHICLE PREEMPTORS	3	4
MOVEMENT	←	↑

CONTROLLER SEQUENCE LEGEND	
←*→	DUAL ENTRY PHASE
←*	SINGLE ENTRY PHASE
←*OL	OVERLAP
*	NUMBER REFERRING TO ASSOCIATED PHASE
←*→	PEDESTRIAN PHASE

OVERLAP PHASE	PERMISSIVE PHASE	PROTECTED PHASE
B	= 4	+ 5
C	= 6	+ 7
D	= 8	+ 1



THE END OF THE TRACER CABLE SHALL BE CONTINUOUS AND EXTEND INTO THE CONTROLLER CABINET.

THE TRAFFIC SIGNAL CONTROL EQUIPMENT FOR THIS PROJECT SHALL BE "ECONOLITE" TO MATCH THE EXISTING ADJACENT SYSTEM.



USER NAME = Mfaller  
DESIGNED JRS  
DRAWN JRS  
CHECKED APS  
DATE -  
REVISER -  
REVISER -  
REVISER -

DESIGNED JRS  
DRAWN JRS  
CHECKED APS  
DATE -  
REVISER -  
REVISER -  
REVISER -

STATE OF ILLINOIS  
DEPARTMENT OF TRANSPORTATION

CABLE PLAN AND  
PHASE DESIGNATION DIAGRAM  
INDIAN TRAIL

F.A.P. RTE.	SECTION	COUNTY	TOTAL SHEETS	SHEET NO.
360	09-00289-00-TL	KANE	37	21
CONTRACT NO. 63627				
FED. ROAD DIST. NO. ILLINOIS FED. AID PROJECT				