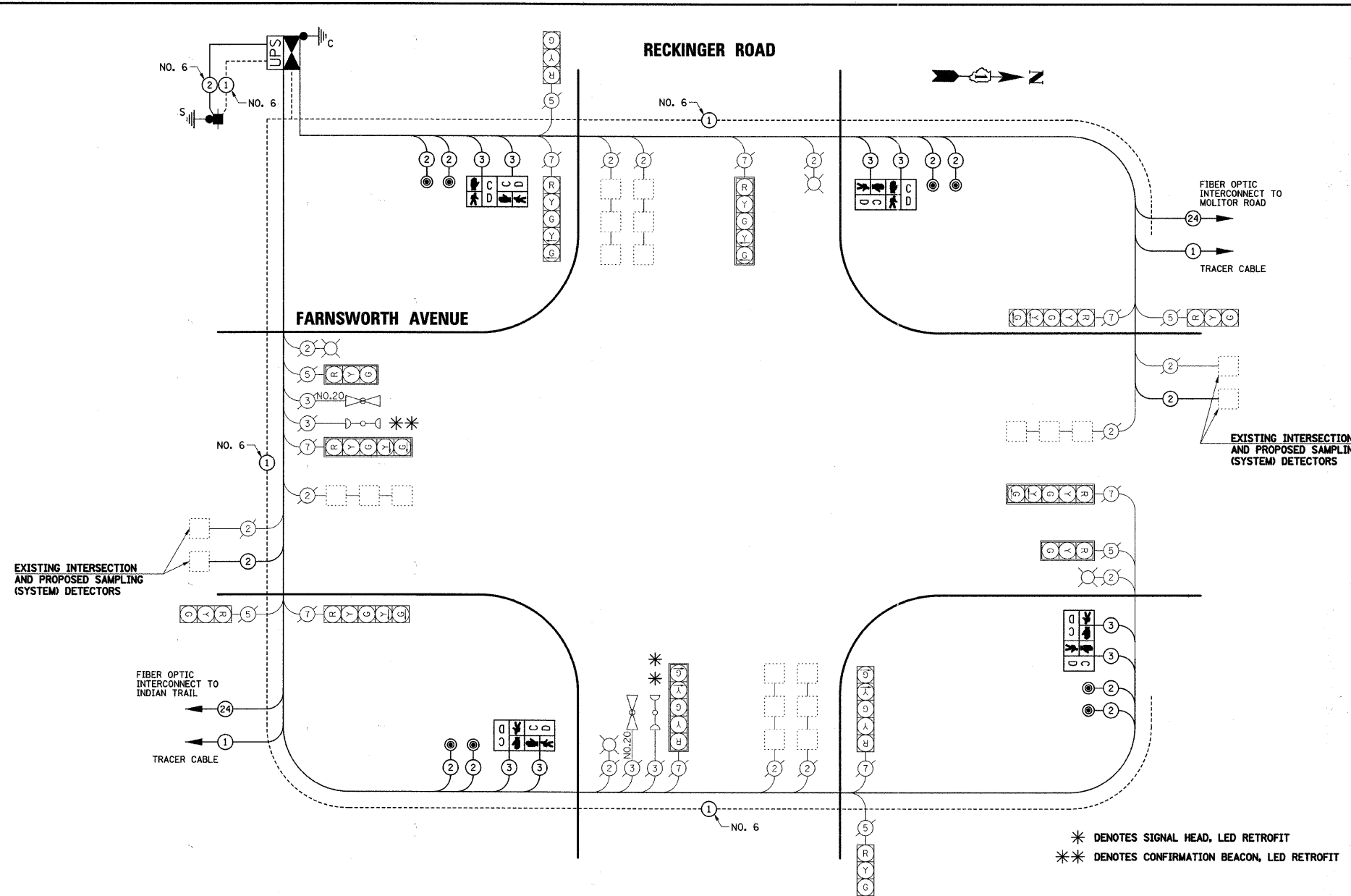


DATE	
BY	
PLAN	
NO.	
DATE	
BY	
PROFILE	
NO.	
DATE	
BY	
PROFILE	
NO.	

DATE	
BY	
PROFILE	
NO.	
DATE	
BY	
PROFILE	
NO.	



**SCHEDULE OF QUANTITIES**

PAY ITEM DESCRIPTION	UNIT	RECKINGER ROAD
SERVICE INSTALLATION - POLE MOUNTED	EACH	1
MAINTENANCE OF EXISTING TRAFFIC SIGNAL INSTALLATION	EACH	1
FULL-ACTUATED CONTROLLER AND TYPE IV CABINET, SPECIAL	EACH	1
UNINTERRUPTABLE POWER SUPPLY	EACH	1
GROUNDING EXISTING HANDHOLE FRAME AND COVER	EACH	8
ELECTRIC CABLE IN CONDUIT, SIGNAL NO. 14 2C	FOOT	1280
ELECTRIC CABLE IN CONDUIT, SIGNAL NO. 14 3C	FOOT	1336
ELECTRIC CABLE IN CONDUIT, LEAD-IN, NO. 14 1 PAIR	FOOT	1155.5
ELECTRIC CABLE IN CONDUIT, SERVICE, NO. 6 2 C	FOOT	25.5
ELECTRIC CABLE IN CONDUIT, EQUIPMENT GROUNDING CONDUCTOR, NO. 6 1C	FOOT	547.5
PEDESTRIAN SIGNAL HEAD, LED, 2-FACE, BRACKET MOUNTED WITH COUNTDOWN TIMER	EACH	4
INDUCTIVE LOOP DETECTOR	EACH	10
DETECTOR LOOP, TYPE I	FOOT	40
LIGHT DETECTOR AMPLIFIER	EACH	2
PEDESTRIAN PUSH-BUTTON	EACH	8
MODIFY EXISTING CONTROLLER FOUNDATION	EACH	1
REMOVE ELECTRIC CABLE FROM CONDUIT	FOOT	1981.5
REMOVE EXISTING TRAFFIC SIGNAL EQUIPMENT	EACH	1
ETHERNET SWITCH	EACH	1
EVP CONFIRMATION BEACON, LED RETROFIT	EACH	2

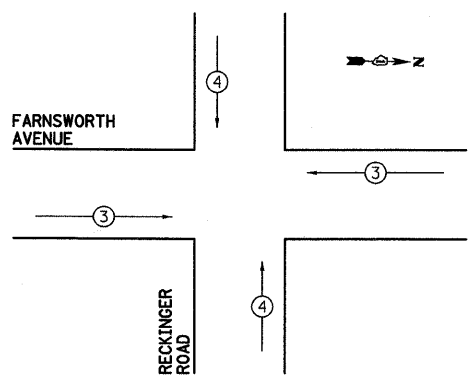
\* DENOTES SIGNAL HEAD, LED RETROFIT  
 \*\* DENOTES CONFIRMATION BEACON, LED RETROFIT

I.D.O.T TRAFFIC SIGNAL INSTALLATION ELECTRICAL SERVICE REQUIREMENTS					
TYPE	NO. LAMPS	WATTAGE		% OPERATION	TOTAL WATTAGE
		INCAND.	LED		
SIGNAL (RED)	14	17	0.50	119	
(YELLOW)	14	25	0.25	87.5	
(GREEN)	14	15	0.25	52.5	
ARROW	16	12	0.10	19.2	
PED. SIGNAL	8	25	1.00	200	
CONTROLLER	1	100	1.00	100	
LUMINAIRE	4	250	0.50	500	
<b>TOTAL =</b>				<b>1078.2</b>	

ENERGY COSTS TO: CITY OF AURORA  
 44 E. DOWNER PLACE  
 AURORA, ILLINOIS 60507-2067

ENERGY SUPPLY CONTACT: MARK SCHERIBEL  
 PHONE: (630) 723-2128  
 COMPANY: COMMONWEALTH EDISON

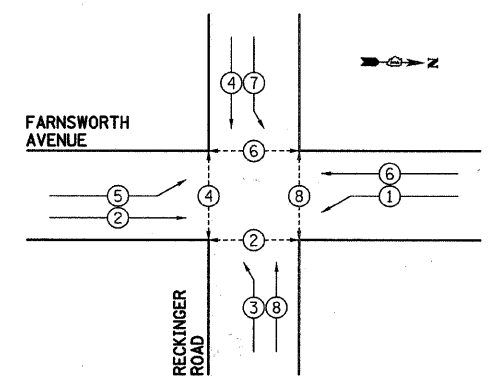
**EMERGENCY VEHICLE PREEMPTION SEQUENCE**



PROPOSED EMERGENCY VEHICLE PREEMPTORS		
PROPOSED EMERGENCY VEHICLE PREEMPTORS	3	4
MOVEMENT	←	→

CONTROLLER SEQUENCE LEGEND	
← ⊕ →	DUAL ENTRY PHASE
← ⊕	SINGLE ENTRY PHASE
← ⊕ OL	OVERLAP
*	NUMBER REFERRING TO ASSOCIATED PHASE
← ⊕ →	PEDESTRIAN PHASE

**CONTROLLER SEQUENCE**



**PHASE DESIGNATION DIAGRAM**

THE END OF THE TRACER CABLE SHALL BE CONTINUOUS AND EXTEND INTO THE CONTROLLER CABINET.

THE TRAFFIC SIGNAL CONTROL EQUIPMENT FOR THIS PROJECT SHALL BE "ECONOLITE" TO MATCH THE EXISTING ADJACENT SYSTEM.



HRGreen.com  
 Illinois Professional Design Firm  
 # 194-001322

USER NAME = MFeiler	DESIGNED JRS	REVISED -
PLOT SCALE =	DRAWN JRS	REVISED -
PLOT DATE = 7/1/2011	CHECKED APS	REVISED -
	DATE -	REVISED -

STATE OF ILLINOIS  
 DEPARTMENT OF TRANSPORTATION

CABLE PLAN AND PHASE DESIGNATION DIAGRAM RECKINGER ROAD			
SCALE:	SHEET NO.	OF SHEETS	STA. TO STA.

F.A.P. RTE.	SECTION	COUNTY	TOTAL SHEETS	SHEET NO.
360	09-00289-00-TL	KANE	37	23
CONTRACT NO. 63627				
FED. ROAD DIST. NO. ILLINOIS FED. AID PROJECT				