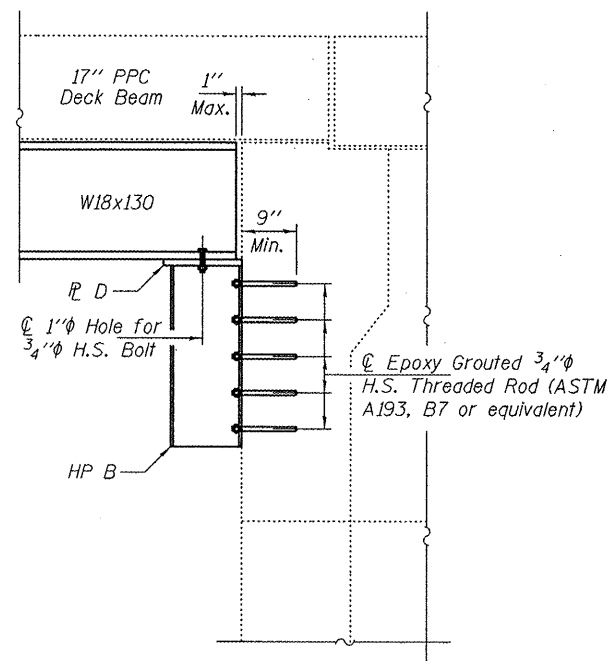
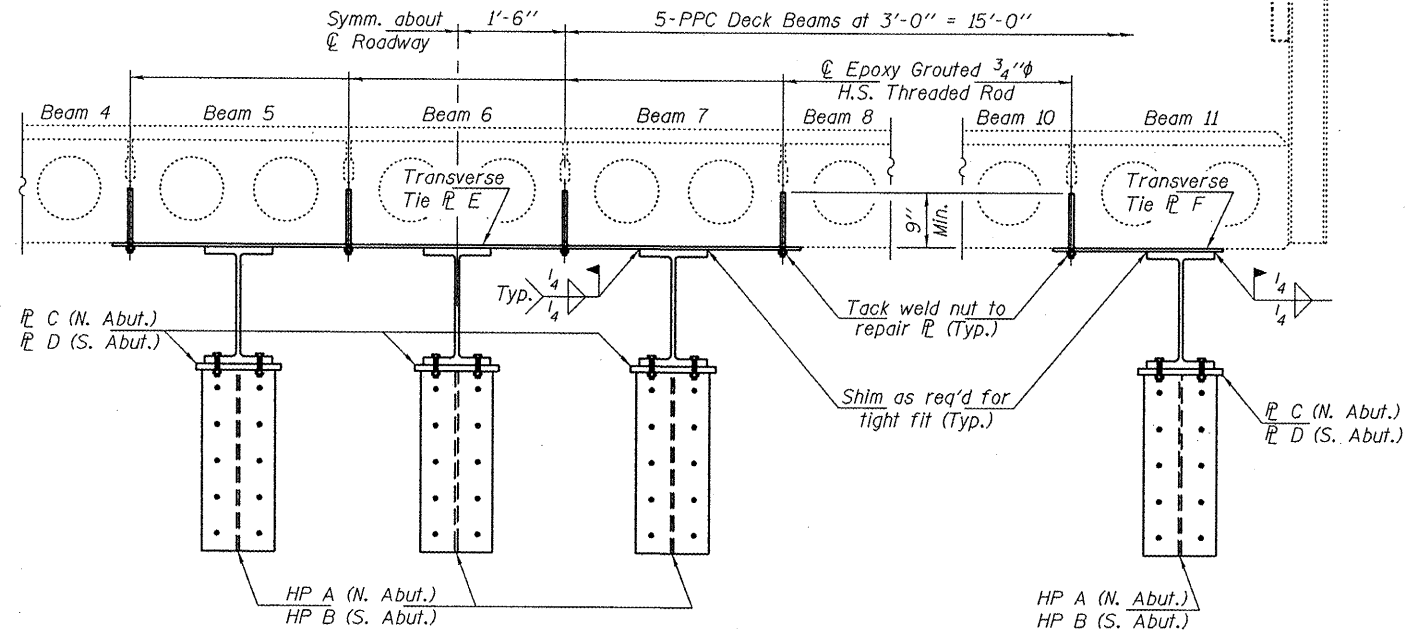


SECTION THRU N. ABUT.

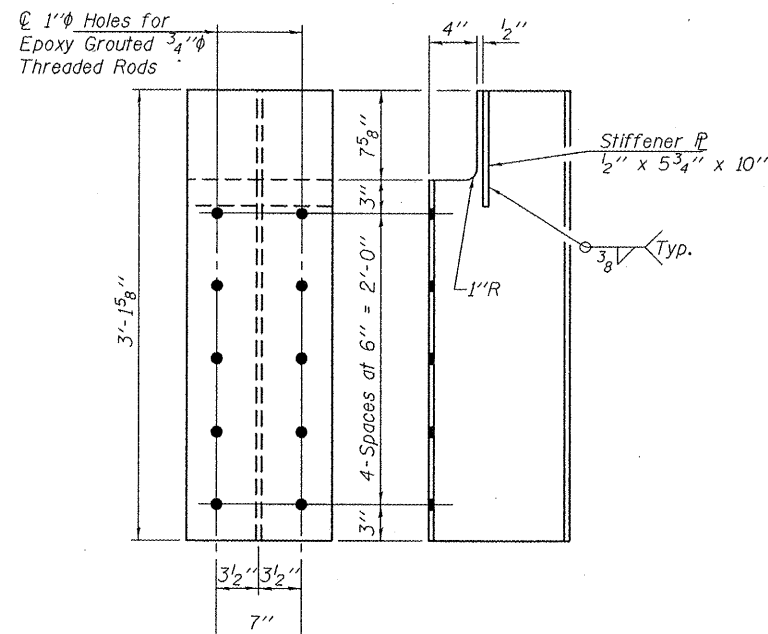


SECTION THRU S. ABUT.

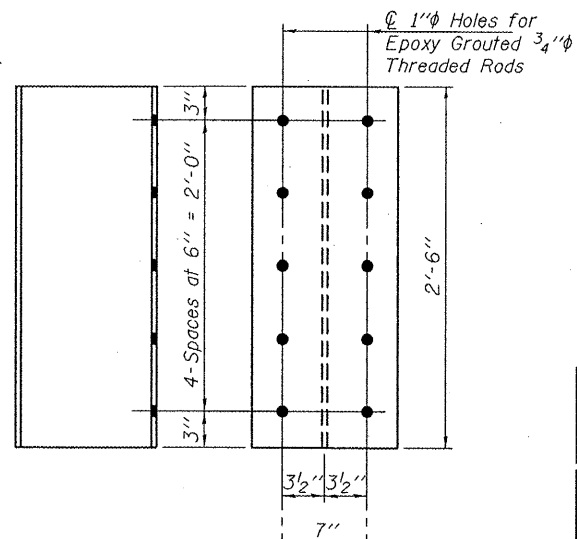


PARTIAL CROSS-SECTION

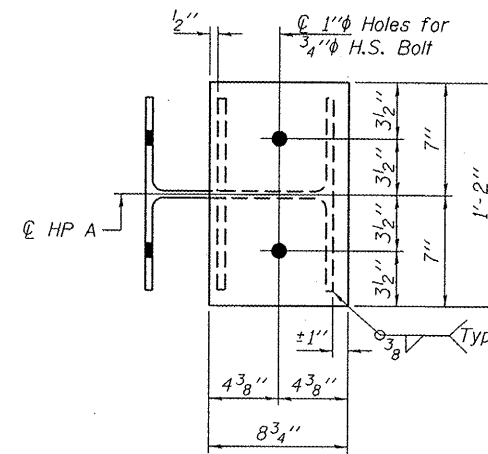
(Looking South)
S. Abut. shown, N. Abut. similar by rotation except as noted.



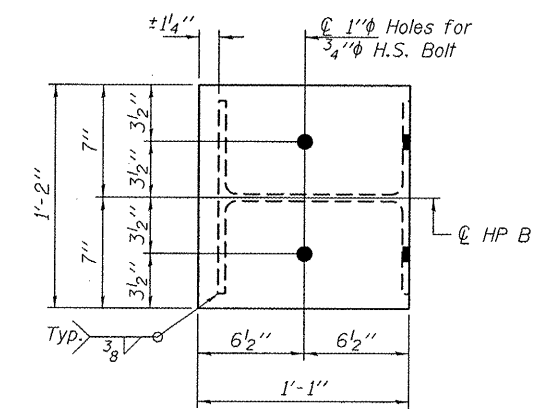
HP A
HP12x53 x 3'-1 5/8"
(4 Required)



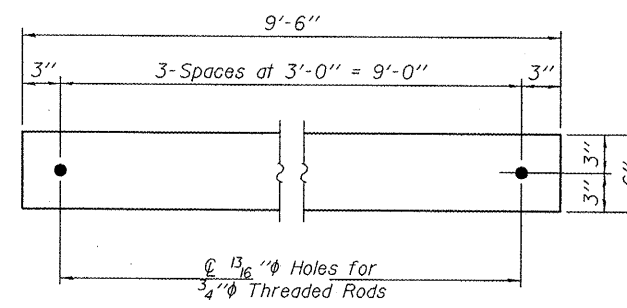
HP B
HP12x53 x 2'-6"
(4 Required)



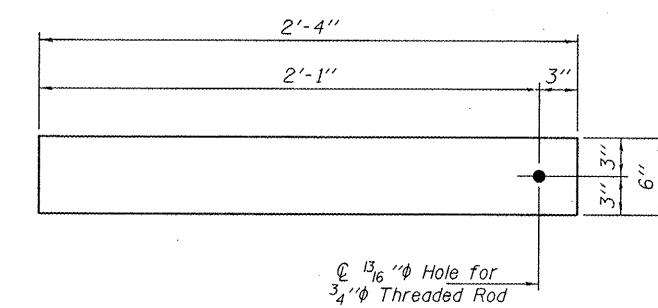
PC
R 1" x 8 3/4" x 1'-2"
(4 Required)



PD
R 1" x 1'-1" x 1'-2"
(4 Required)



TRANSVERSE TIE R E
R E 1/2" x 9'-6" x 6" (3 Req'd)



TRANSVERSE TIE R F
R F 1/2" x 2'-4" x 6" (3 Req'd)

DESIGNED - GGE	EXAMINED - <i>Jaime F. Joffe</i>	DATE - AUGUST 18, 2011
CHECKED - ATH	ACTING ENGINEER OF STRUCTURAL SERVICES	
DRAWN - Kyle M. Steffen	PASSED - <i>Carl Pappas</i>	REVISED
CHECKED - GGE ATH	ACTING ENGINEER OF BRIDGES AND STRUCTURES	REVISED

STATE OF ILLINOIS
DEPARTMENT OF TRANSPORTATION

DECK BEAM SUPPORT DETAILS
SN 048-0015

SHEET NO. 2 OF 2 SHEETS

F.A.P. RTE. 626	SECTION (42B)I	COUNTY KNOX	TOTAL SHEETS 8	SHEET NO. 8
CONTRACT NO. 68A68				
ILLINOIS FED. AID PROJECT				