

STATE OF ILLINOIS  
DEPARTMENT OF TRANSPORTATION  
DIVISION OF HIGHWAYS

**PROPOSED  
HIGHWAY PLANS**

FAI ROUTE 57 (I-57)  
SECTION (10-34, 10-35)RS-2(SB)  
PROJECT IM-057-5(195)237  
CHAMPAIGN COUNTY  
OLYMPIAN DR. TO 2 MI. S. OF THOMASBORO  
RESURFACING (INT-3RD)

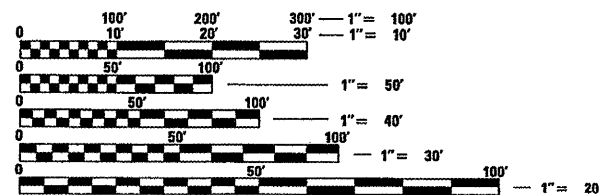
F.A.I. RTE.	SECTION	COUNTY	TOTAL SHEETS	SHEET NO.
57	(10-34, 10-35)RS-2(SB)	CHAMPAIGN	66	1
		ILLINOIS	CONTRACT NO. 70923	

FOR INDEX OF SHEETS, SEE SHEET NO. 2  
FOR SUMMARY OF QUANTITIES, SEE SHEET NO. 4

DESIGN DESIGNATION  
INTERSTATE  
2,390 (29) INTERSTATE 26.7 (FD-20)

CURRENT TRAFFIC DATA  
F.A.I. 57  
SPEED LIMIT: 65 MPH

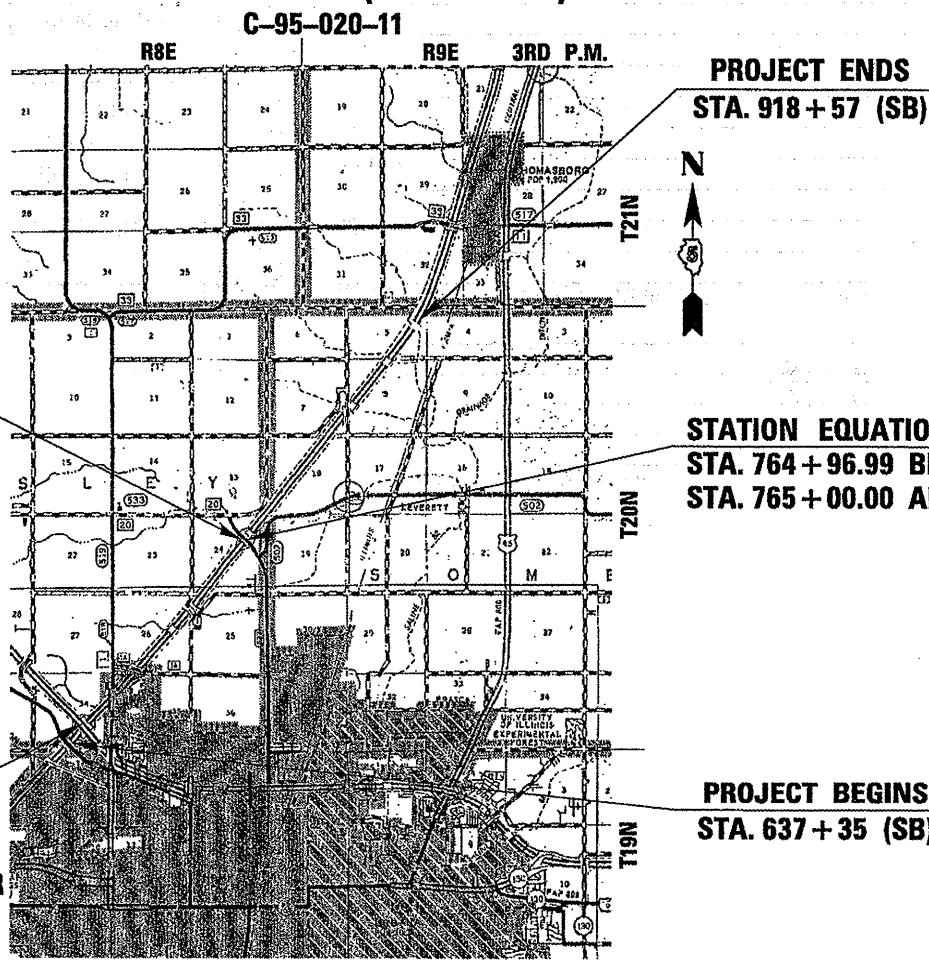
ADT = 21,800 (2009)  
PV = 76.1%  
SU = 3.4%  
MU = 20.5%



FULL SIZE PLANS HAVE BEEN PREPARED USING STANDARD ENGINEERING SCALES. REDUCED SIZED PLANS WILL NOT CONFORM TO STANDARD SCALES. IN MAKING MEASUREMENTS ON REDUCED PLANS, THE ABOVE SCALES MAY BE USED.

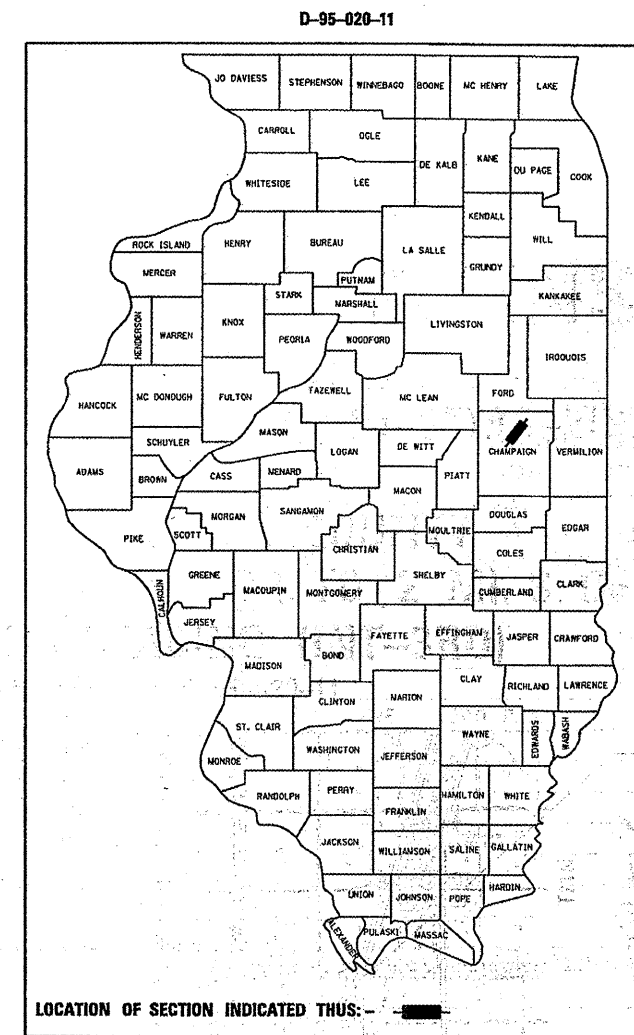
J.U.L.I.E.  
JOINT UTILITY LOCATION INFORMATION FOR EXCAVATION  
1-800-892-0123 HENSLEY AND SOMER TOWNSHIP  
OR 811

PROJECT ENGINEER: JASON STULTS  
CONSULTANT LIAISON: RUSTIN KEYS  
DISTRICT 5 PHONE NUMBER: (217) 465-4181  
CONTRACT NO. 70923



LOCATION MAP

GROSS LENGTH = 28,118.99 FT. = 5.326 MILE  
NET LENGTH = 28,118.99 FT. = 5.326 MILE



STATE OF ILLINOIS  
DEPARTMENT OF TRANSPORTATION  
DIVISION OF HIGHWAYS

SUBMITTED 6/28 2011  
Justin E. Coover  
DEPUTY DIRECTOR OF HIGHWAYS, REGION THREE ENGINEER  
Aug 19 2011  
Scott E. Stett, P.E.  
ACTING ENGINEER OF DESIGN AND ENVIRONMENT  
Aug 19 2011  
Christine H. Reed  
DIRECTOR OF HIGHWAYS, CHIEF ENGINEER

BLANK, WESSELINK, COOK & ASSOCIATES  
ENGINEERS - CONSULTANTS  
DECATUR, ILLINOIS



Charles W. Guthrie, Jr.  
CHARLES W. GUTHRIE, JR., P.E.

DATE June 7 2011

EXPIRES NOVEMBER 30, 2011

PRINTED BY THE AUTHORITY  
OF THE STATE OF ILLINOIS