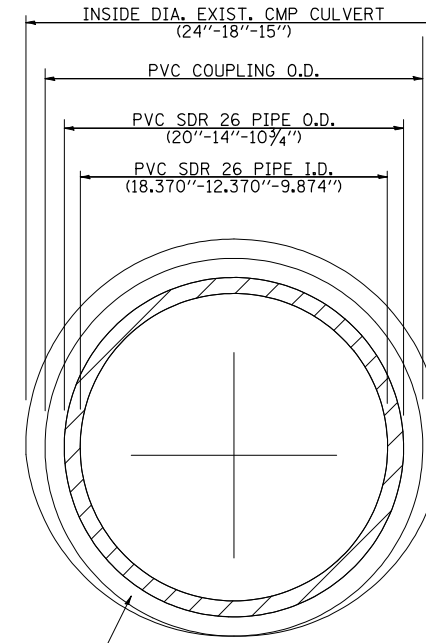


**CULVERT REPAIR TABLE**

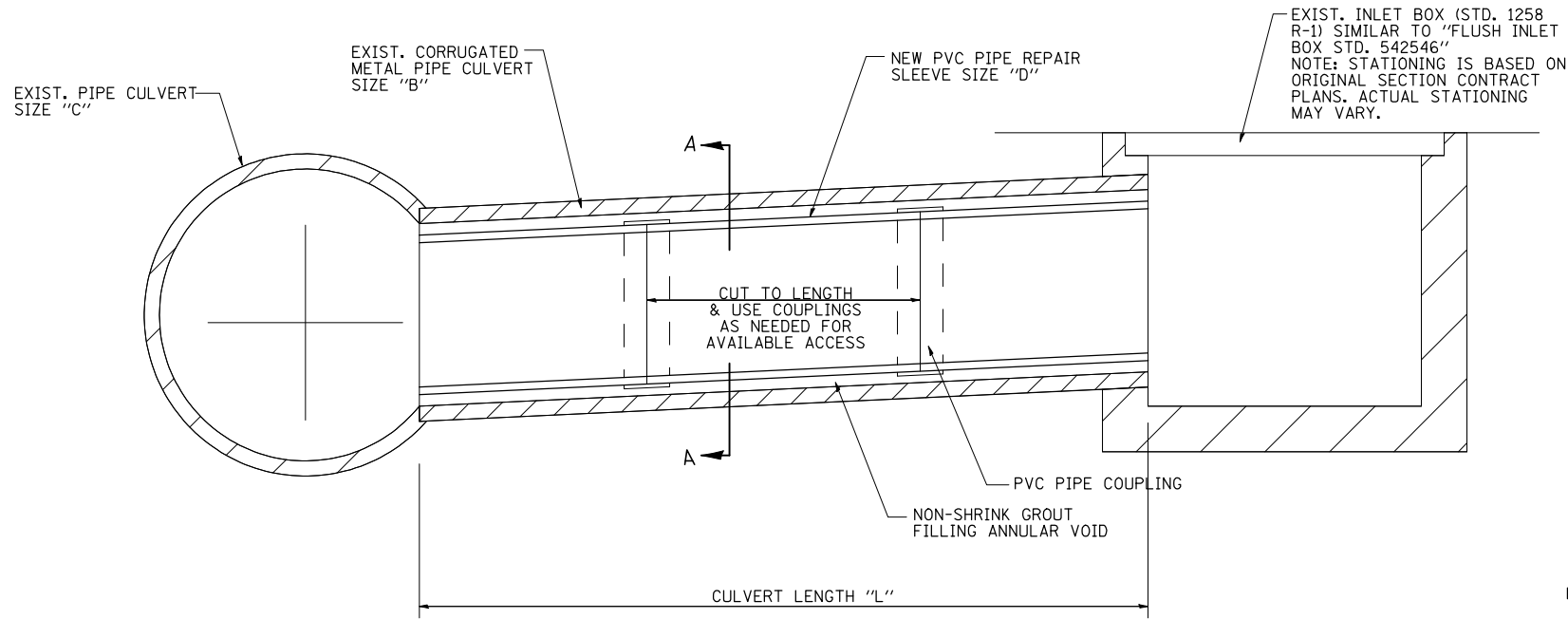
"A"	"B"	"C"	"D"	"L"
731+67.50	24"	6'x3'	20"	8'-0"
768+50.00	24"	10'x11'	20"	32'-0"
799+36.00	24"	20'x3'	20"	8'-0"
825+14.00	15"	8'x3'	10"	8'-0"
828+14.00	15"	8'x3'	10"	8'-0"
850+87.00	24"	6'x3'	20"	8'-0"
877+56.00	24"	11'x12'	20"	12'-0"
895+87.00	18"	6'x3'	14"	8'-0"

**TYP. MEDIAN INLET REPAIR @ EXIST. BOX CULVERTS**



FILL ANNULAR VOID WITH A NON SHRINK GROUT ACCORDING TO SECTION 1024 OF THE STANDARD SPECIFICATIONS. GROUT SHALL BE PUMPED OR Poured AS A FLUID AND EXHIBIT POSITIVE EXPANSION AND PLACEMENT AT 1/2" MIN. THICKNESS.

**SECTION A-A**



**CULVERT REPAIR TABLE**

"A"	"B"	"C"	"D"	"L"
741+89.00	24"	36"	20"	8'-0"
747+87.50	15"	30"	10"	8'-0"
777+88.50	24"	48"	20"	8'-0"

**TYP. MEDIAN INLET REPAIR @ EXIST. PIPE CULVERTS**

**NOTES:**

1. PLAN DIMENSIONS AND DETAILS RELATIVE TO EXISTING PLANS ARE SUBJECT TO NOMINAL CONSTRUCTION VARIATIONS. THE CONTRACTOR SHALL FIELD VERIFY EXISTING DIMENSIONS AND DETAILS AFFECTING NEW CONSTRUCTION AND MAKE NECESSARY APPROVED ADJUSTMENTS PRIOR TO CONSTRUCTION OR ORDERING OF MATERIALS. SUCH VARIATIONS SHALL NOT BE CAUSE FOR ADDITIONAL COMPENSATION FOR A CHANGE IN SCOPE OF THE WORK.
2. PVC PIPE TO BE SDR 26 SERIES WITH A CELL CLASSIFICATION OF 12454 PER ASTM D1784 AND IN COMPLIANCE WITH ASTM D2241 WITH SOLVENT CEMENTED JOINTS PER ASTM D2672.
3. CONSTRUCTION, METHOD OF MEASUREMENT, AND BASIS OF PAYMENT WILL BE IN ACCORDANCE WITH SECTION 543 OF THE STANDARD SPECIFICATIONS.
4. EXISTING CORRUGATED METAL PIPES TO BE CLEANED OF ANY DEBRIS AND SILT BEFORE LINING. COST OF CLEANING INCLUDED IN CONTRACT UNIT PRICE FOR INSERTION CULVERT LINER.
5. AFTER INSERTION LINING IS COMPLETE BACKFILL ANY SINK HOLES TO FINISH GRADE, SEED AND MULCH IN ACCORDANCE WITH THE SPECIAL PROVISIONS. BACKFILLING, SEEDING AND MULCHING WILL BE INCLUDED IN THE CONTRACT UNIT PRICE FOR INSERTION CULVERT LINER.