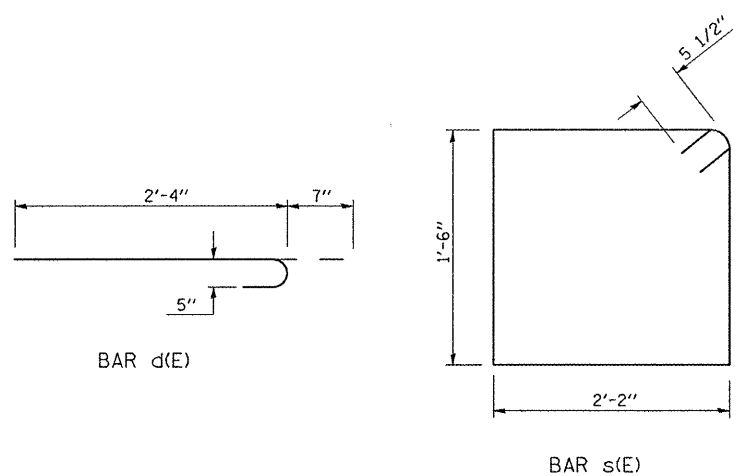


David Carl Puzey 8/12/11
Expires 11/30/12



DIMENSION TABLE

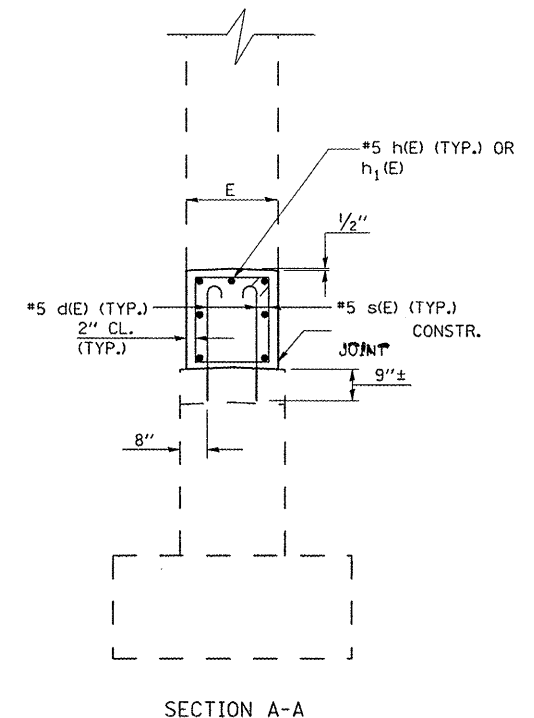
STRUCTURE	LOCATION	B	C	D	E	F
010-0254	MEDIAN	12'-1 1/2"	12'-1 1/2"	1'-10"	2'-6"	3'-6"

BAR TABLE

BAR	QTY.	SIZE	LENGTH	SHAPE
d(E)	156	#5	2'-11"	
s(E)	78	#5	8'-3"	
h(E)	35	#5	11'-10"	
h1(E)	14	#5	5'-9"	

BILL OF MATERIALS

ITEM	UNIT	QUANTITY
CONCRETE STRUCTURES	CU. YD.	12
REINFORCEMENT BARS, EPOXY COATED	LB.	1670



GENERAL NOTES

CLASS SI CONCRETE SHALL BE USED THROUGHOUT.

EPOXY GROUTING SHALL BE DONE IN ACCORDANCE WITH ARTICLE 584 OF THE STANDARD SPECIFICATIONS. THE COST OF THE EPOXY GROUTING AND DRILLING SHALL BE INCLUDED IN THE COST OF REINFORCEMENT BARS, EPOXY COATED.

REINFORCEMENT BARS SHALL CONFORM TO THE REQUIREMENTS OF ASTM 706 GR 60. SEE SPECIAL PROVISIONS.

PLAN DIMENSIONS AND DETAILS RELATIVE TO EXISTING PLANS ARE SUBJECT TO NOMINAL CONSTRUCTION VARIATIONS. THE CONTRACTOR SHALL FIELD VERIFY EXISTING DIMENSIONS AND DETAILS AFFECTING NEW CONSTRUCTION AND MAKE NECESSARY APPROVED ADJUSTMENTS PRIOR TO CONSTRUCTION OR ORDERING OF MATERIALS. SUCH VARIATIONS SHALL NOT BE CAUSE FOR ADDITIONAL COMPENSATION FOR A CHANGE IN THE SCOPE OF THE WORK. HOWEVER, THE CONTRACTOR WILL BE PAID FOR THE QUANTITY ACTUALLY FURNISHED AT THE UNIT PRICE FOR THE WORK.

REINFORCEMENT BARS DESIGNATED (E) SHALL BE EPOXY COATED.

THE 1/2" PREFORMED EXPANSION JOINT FILLER MATERIAL AND LABOR SHALL BE CONSIDERED INCLUDED IN THE CONCRETE STRUCTURES UNIT COST.