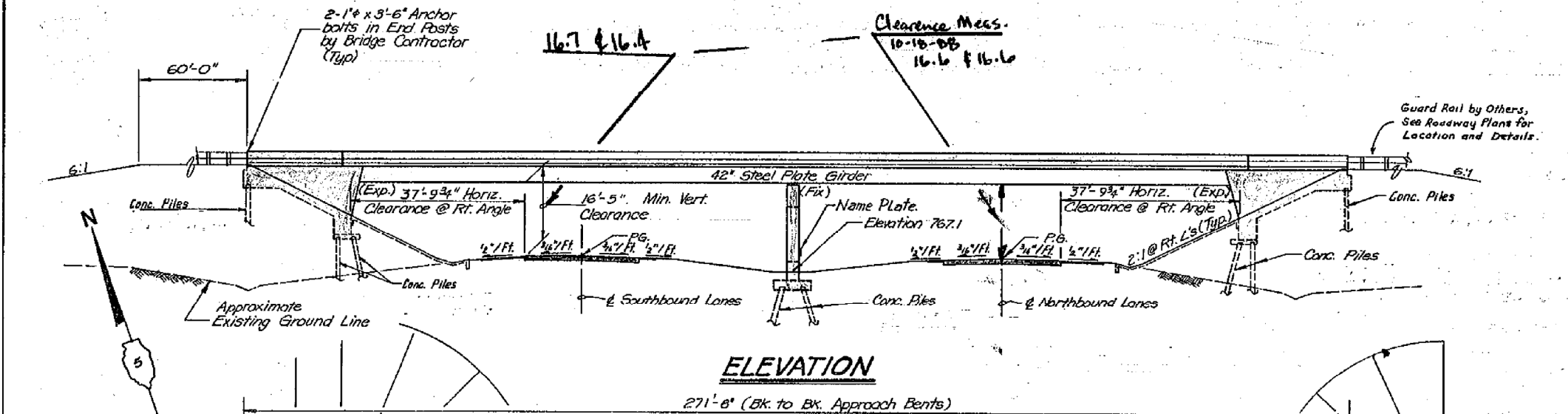
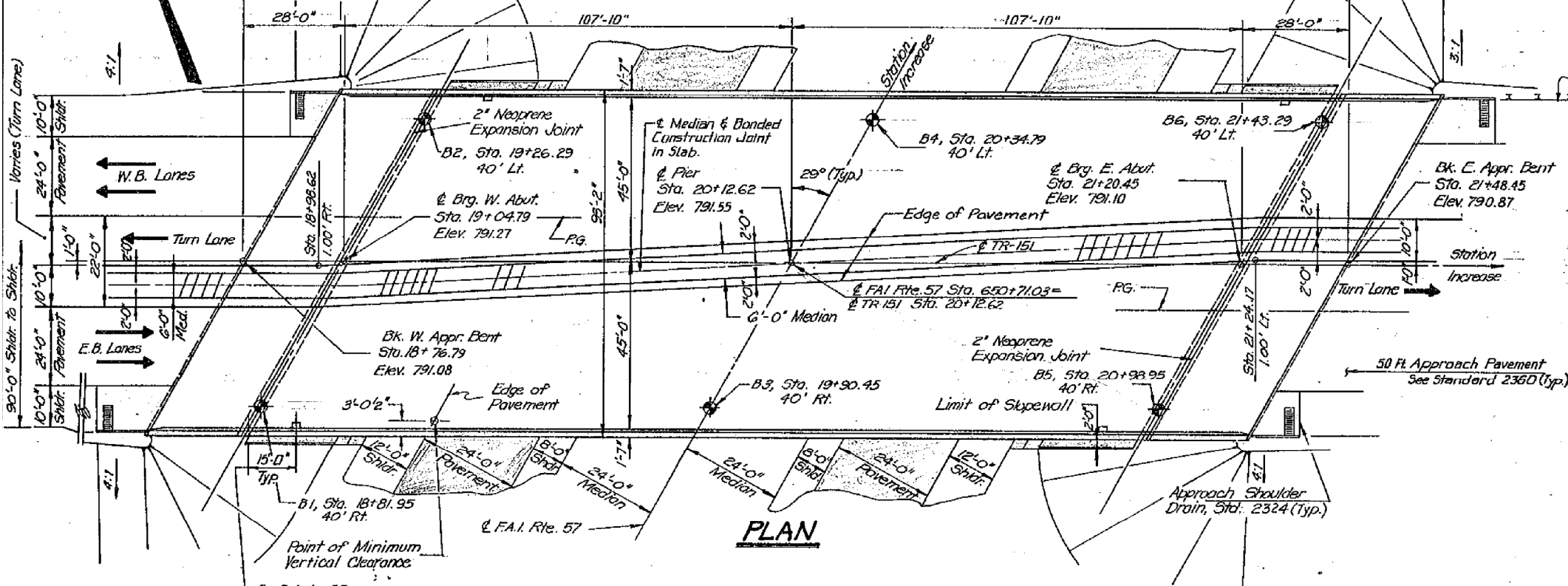


BENCHMARK: I.D.O.T. Monument Sta. 648+57.02 @ FAI 57
Elevation 767.07

ROUTE NO.	SECTION	COUNTY	TOTAL SHEETS	SHEET NO.	SHEET NO. 1
634-HBK	10-34	CHAMPAIGN	73	34	OF SHEETS 18
FED. ROAD DIST. NO. 1 ILLINOIS FED. AID PROJECT					



ITEM	UNIT	SUPER	SUB	TOTAL
Structure Excavation	Cu. Yds.	-	920	920
Protective Coat	Sq. Yds.	2921	-	2921
Class X Concrete	Cu. Yds.	752.6	593.4	1346.0
Furnishing And Erecting Structural Steel	Lump Sum	1	-	1
Stud Shear Connectors	Each	7194	-	7194
Reinforcement Bars	Lbs.	62,800	77,760	140,560
Reinforcement Bars (Epoxy Coated)	Lbs.	171,120	-	171,120
Furnishing Concrete Piles	Lin. Ft.	-	8749	8749
Driving Concrete Piles	Lin. Ft.	-	8749	8749
Test Piles-Concrete	Each	-	2	2
Name Plates	Each	-	1	1
Slope Wall 4"	Sq. Yds.	-	825	825
Neoprene Expansion joint 2"	Lin. Ft.	210	-	210
Elastomeric Bearing Assembly Type-I	Each	22	-	22
Sand Backfill	Cu. Yds	-	809	809



STATION 20+12.62
BUILT 198 BY
STATE OF ILLINOIS
F.A.I. RT. 57 SEC. 10-34 HBK
F.A. PROJ. MAIR-57-5 (166)
LOADING HS20
STR. NO. 010-0254

NAME PLATE
(See Std. 2113)

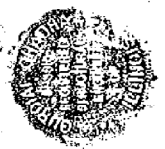
DESIGN SPECIFICATIONS:
AASHTO 1983 & 1984 & 1985 Interim, Std. Specifications for Highway Bridges. (Standard Specifications for Road and Bridge Construction, State of Illinois, dated October 1, 1983.)

DESIGN CRITERIA:
Load Factor Design.
Live Load: HS20-44.
Allow 25 psf. for future wearing surface.

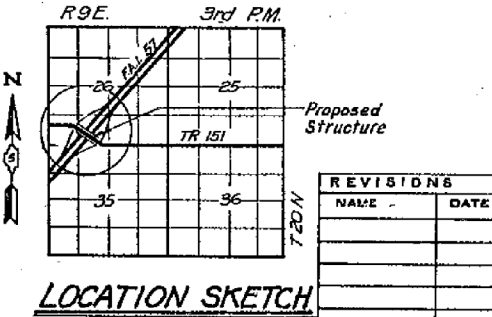
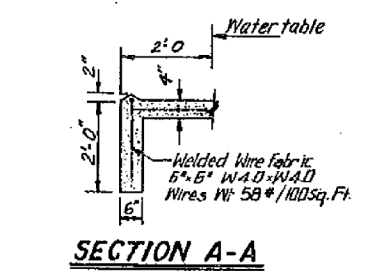
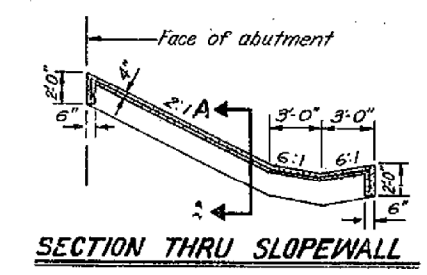
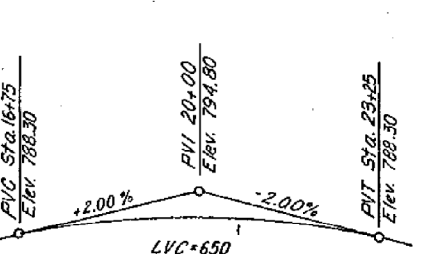
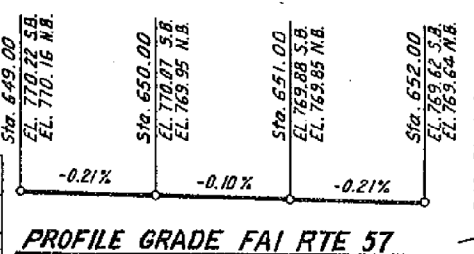
DESIGN STRESSES:
Concrete:
F_c = 3500 psi.
Structural Steel:
F_y = 50,000 psi. AASHTO M 223 Steel.*
F_y = 36,000 psi. AASHTO M 183 Steel.
Reinforcement:
F_y = 80,000 psi. *Grade 50

Legend:
● Soil Boring

APPROVED
FOR STRUCTURAL ADEQUACY ONLY
James T. Rayburn
Principal of Bridge Engineering



DESIGNED	Amari / Simpson / J.M.P.
CHECKED	Amari / I.M.R.
DRAWN	Simpson / S.D.D.
CHECKED	Amari / J.M.P.



P.G. ENGINEERING ASSOCIATES, INC.
600 WEST JACKSON BLVD.
CHICAGO ILLINOIS, 60606

GENERAL PLAN AND ELEVATION
TR 151 OVER F.A.I. RT. 57
SECTION 10-34 HBK
CHAMPAIGN COUNTY
STA. 20+12.62

NAME	DATE

SCALE: VERT. 1"=20'
HORIZ. 1"=40'