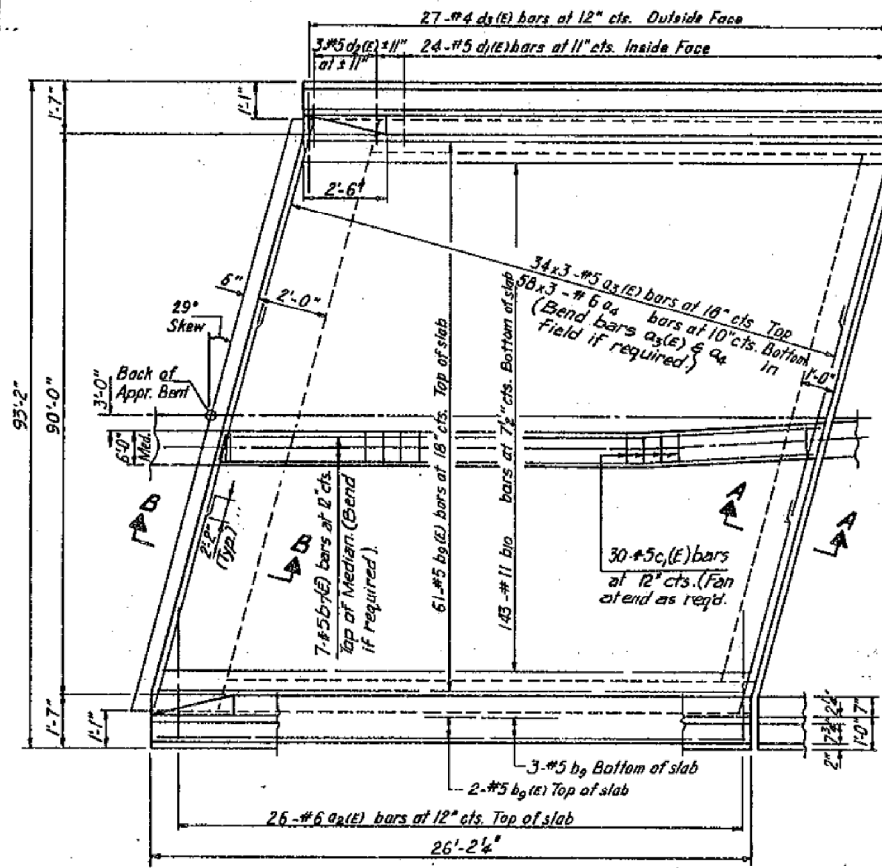


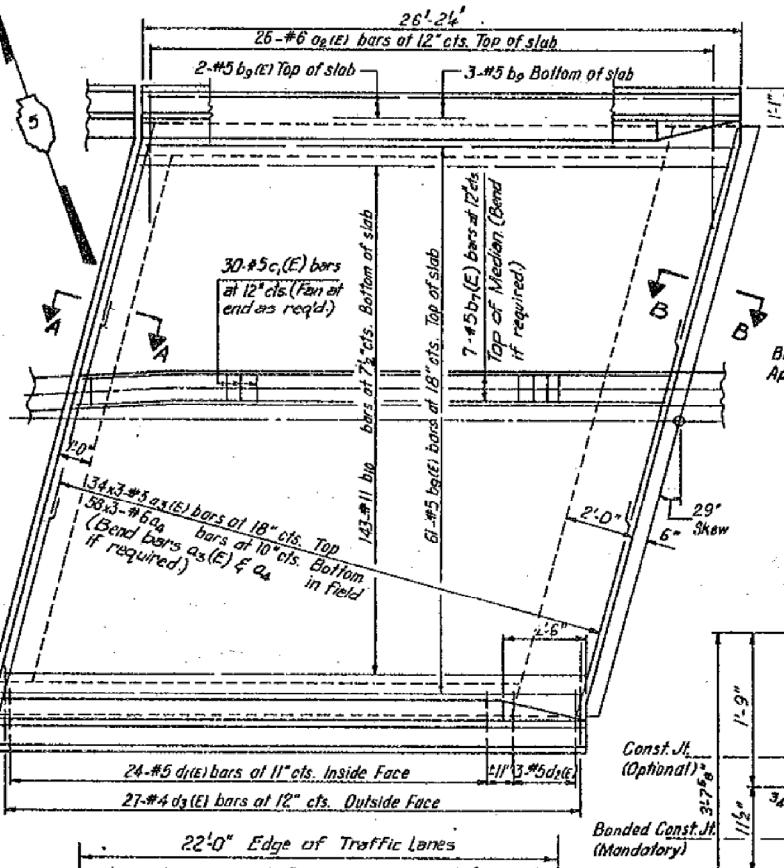
STATE OF ILLINOIS
DEPARTMENT OF TRANSPORTATION

Added #5 bar @ 12" cts

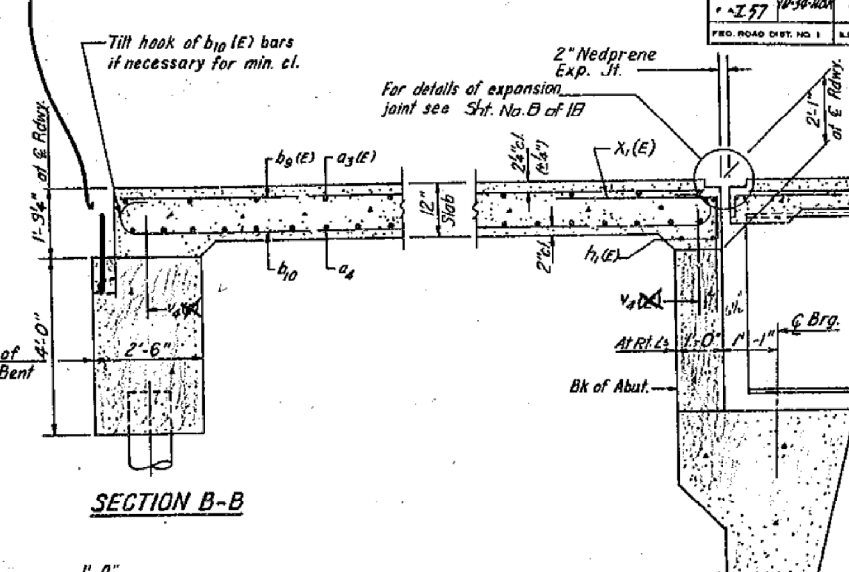
ROUTE NO.	SECTION	COUNTY	TOTAL SHEETS	SHEET NO.	SHEET NO. OF SHEETS
57	10-34-HBK	CHAMPAIGN	73	39	13



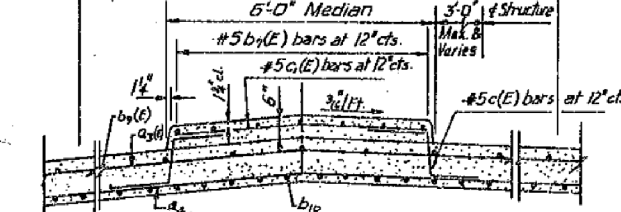
PLAN



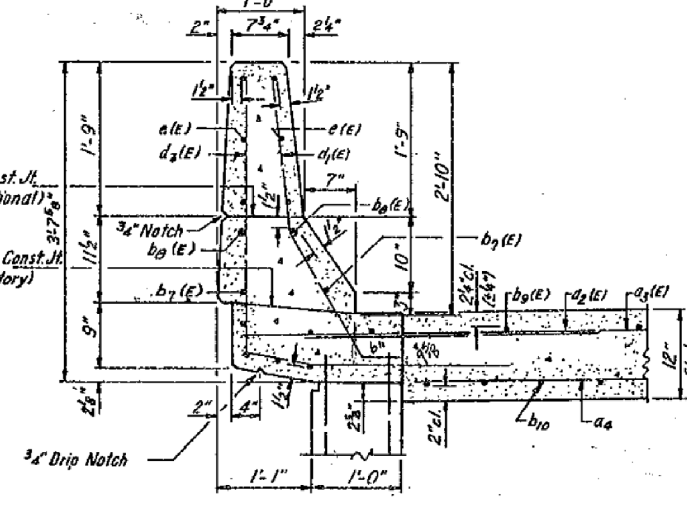
SECTION A-A



SECTION B-B



SECTION THRU MEDIAN

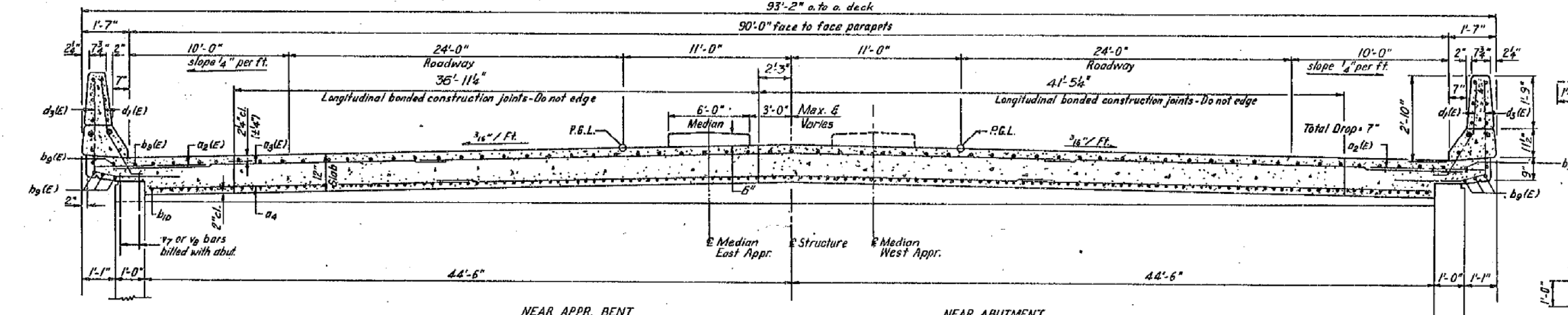


SECTION THRU PARAPET

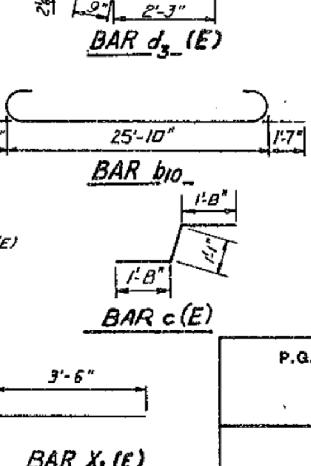
TWO APPR. SLABS
BILL OF MATERIAL

Bar	No.	Size	Length	Shape
a2(E)	104	#6	4'-0"	
a3(E)	204	#5	36'-5"	
a4	348	#6	36'-0"	
b7(E)	14	#5	25'-10"	
b9(E)	142	#5	25'-10"	
b10	286	#11	29'-0"	
c(E)	120	#5	4'-5"	
c1(E)	60	#5	5'-0"	
d1(E)	96	#5	3'-11"	
d2(E)	12	#5	4'-2"	
d3(E)	108	#4	6'-2"	
x1(E)	180	#5	4'-5"	
h1(E)	24	#5	35'-9"	
Reinf Bars			Lbs.	62,880
Reinforcement Bars (Epoxy Coated)			Lbs.	16,130
Class X Concrete			CuYds.	184.7

Reinforcement bars designated (E) shall be epoxy coated.
Bars indicated thus 34 x 3 #5 etc. indicates 34 lines of bars with 3 lengths per lines.



CROSS SECTION



DESIGNED	J.M.P.
CHECKED	I.M.R.
DRAWN	S.D.D.
CHECKED	J.M.P.

P.G. ENGINEERING ASSOCIATES, INC.
800 WEST JACKSON BLVD.
CHICAGO ILLINOIS 60606

APPROACH SPANS DECK DETAILS
TR 151 OVER F.A.I. RT. 57
SECTION 10-34 HKB
CHAMPAIGN COUNTY
STA. 20+12.62

SCALE: VERT. HORIZ.
DATE

REVISIONS	
NAME	DATE